

FOR LEASE



TIMBERHILL SHOPPING CENTER - 2301 NW KINGS BOULEVARD - CORVALLIS, OR

LEASE

AVAILABLE SPACES: 1,120 - 5,575 Square Feet

TIMBERHILL SHOPPING CENTER: Corvallis' largest shopping center anchored by Winco Foods, Petco, Ross Dress For Less, & Ace Hardware

PARKING: Abundant parking available

LOCATION: Located at the intersection of NW Kings Blvd & Walnut Blvd

Lease Rates: Retail Spaces: \$17/SF/NNN • Restaurant Pad Building: \$24/SF/NNN



www.campbellre.com

TIM CAMPBELL
timc@campbellre.com
541.484.2214

BILL NEWLAND
bill@campbellre.com
541.484.2214

Licensed in the State of Oregon

BILLY POLLOCK
billyp@campbellre.com
541.285.8865

BEN WANICHEK
benw@campbellre.com
541.520.0067



TIMBERHILL SHOPPING CENTER is the largest retail center in the Corvallis market. The prime location on the north side of Corvallis is approximately 3 miles from Oregon State University, 1 mile from NW 9th Street and Hwy 99, and adjacent to the medical/dental buildings along Walnut Blvd and NW Kings Blvd. The center is anchored by Winco Foods, Petco, Ace Hardware, and Ross Dress For Less, and features a total of 200,566 square feet of retail space occupied by both national and local tenants.



Available Spaces - TIMBERHILL SHOPPING CENTER



AVAILABLE SPACES		
2315	RETAIL	1,120 SF
2393	RETAIL	1,400 SF
2401	RETAIL	2,440 SF
2409	RETAIL	5,575 SF
2467	RETAIL	5,057 SF
2483	BUILD-TO-SUIT	5,050 SF/1 AC
2578	RESTAURANT	2,578 SF

The information in this package was obtained from sources deemed reliable, and is not guaranteed by agent. Package is subject to change, error or omission, prior sale or lease, correction or withdrawal. Any party contemplating purchase is urged to conduct their own independent study and inspection.

Suite 2393

- 1,400 square feet
- Former salon
- Private office
- Storage room
- \$17/SF, NNN



Suite 2467

- 5,057 square feet
- Open layout
- Expansive window-line
- Storage room
- \$17/SF, NNN



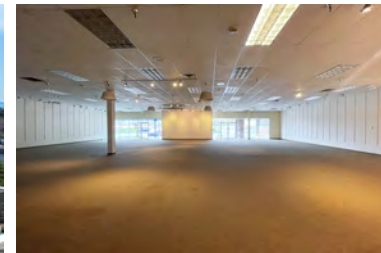
Suite 2401

- 2,440 square feet
- Open layout
- Office/storage room
- \$17/SF, NNN



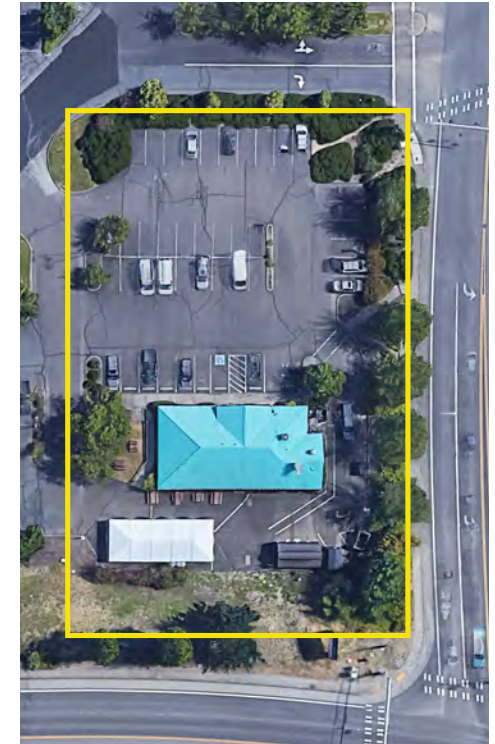
Suite 2409

- 5,575 square feet
- Open layout
- Multiple dressing rooms
- Office/storage room
- \$17/SF, NNN



Suite 2575

- 2,578 square feet
- Restaurant building
- Corner of NW Kings Blvd & NW Walnut
- \$24/SF, NNN



Suite 2315

- 1,120 square feet
- Located between GNC & Nirvana Restaurant
- \$17/SF, NNN



Center Aerial - TIMBERHILL SHOPPING CENTER



The information in this package was obtained from sources deemed reliable, and is not guaranteed by agent. Package is subject to change, error or omission, prior sale or lease, correction or withdrawal. Any party contemplating purchase is urged to conduct their own independent study and inspection.

Demographics - TIMBERHILL SHOPPING CENTER

POPULATION

RADIUS	2-MILE	5-MILES	10-MILES
2028	41,280	75,021	132,675
2023	40,236	72,787	129,106
2010	36,771	64,317	114,254

2023 HH INCOME

Average	\$83,235	\$87,919	\$87,389
Median	\$60,929	\$66,432	\$69,758

2023 MEDIAN HOME VALUE

	\$371,299	\$390,573	\$345,821
--	-----------	-----------	-----------

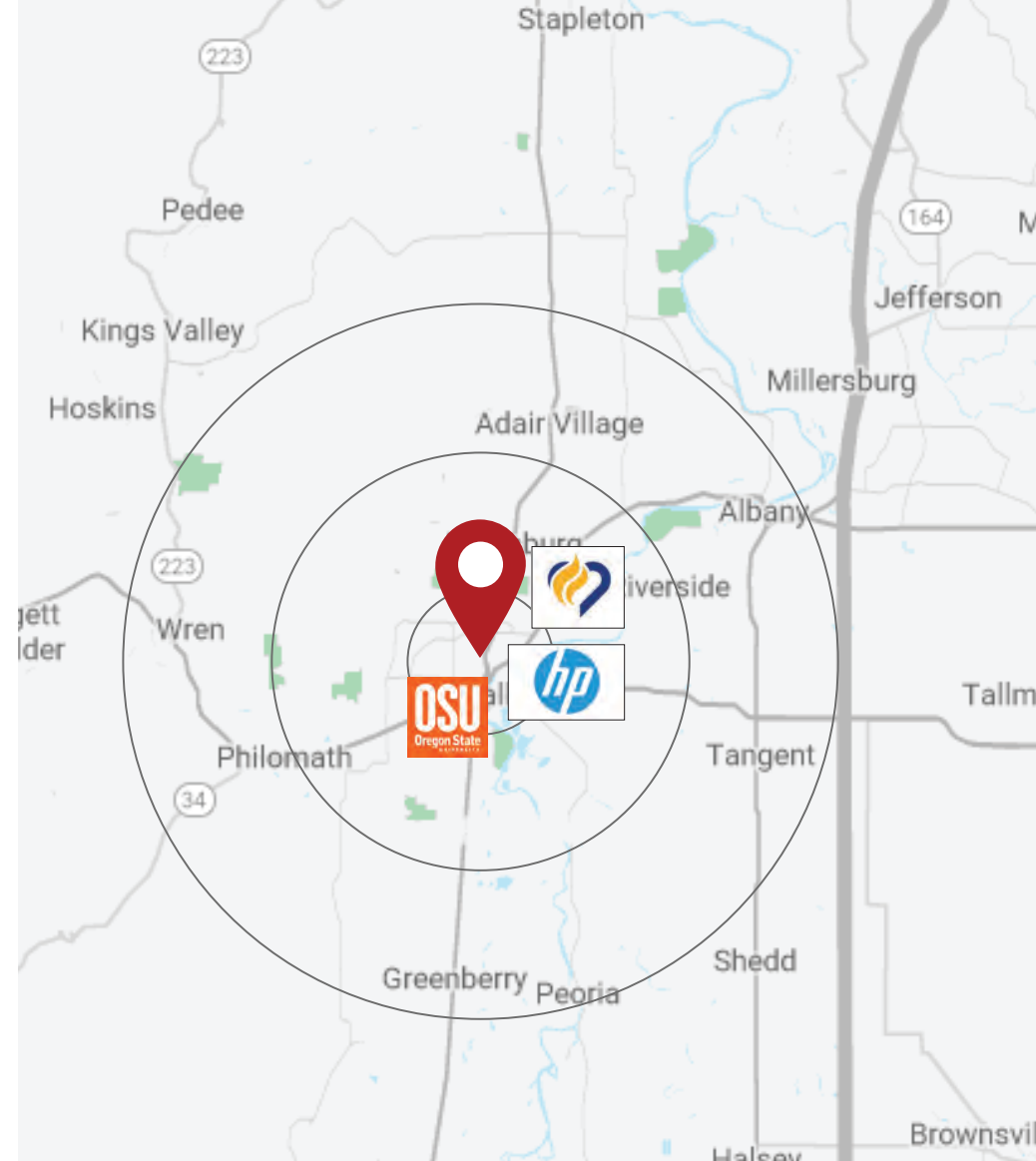
2023 MEDIAN AGE

	32	33.70	35.2
--	----	-------	------

SOURCE: COSTAR GROUP



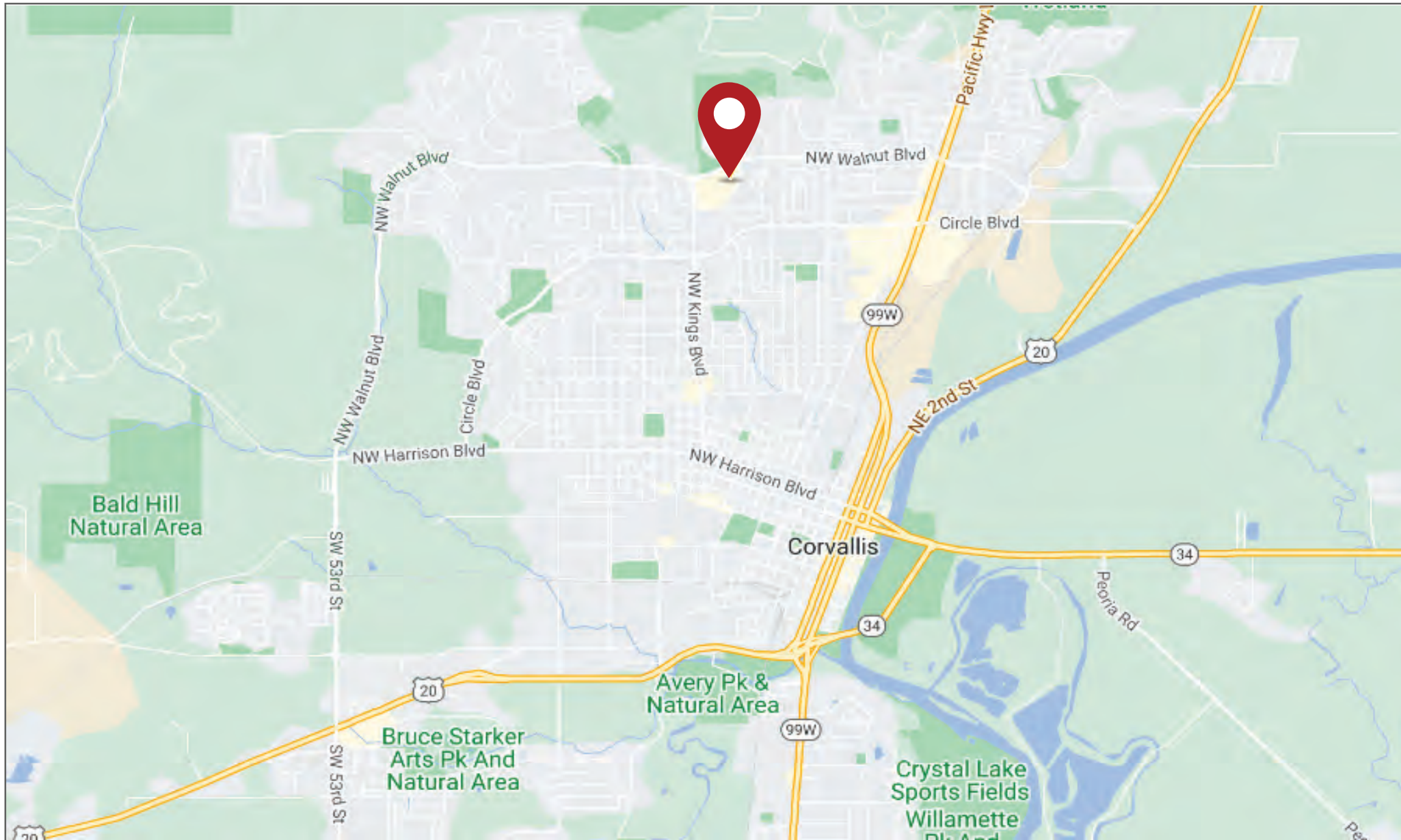
The information in this package was obtained from sources deemed reliable, and is not guaranteed by agent. Package is subject to change, error or omission, prior sale or lease, correction or withdrawal. Any party contemplating purchase is urged to conduct their own independent study and inspection



CORVALLIS, OREGON

IS HOME TO OREGON STATE UNIVERSITY WITH OVER 40,000 STUDENTS AND FACULTY, HEWLETT-PACKARD RESEARCH CAMPUS AND GOOD SAMARITAN REGIONAL MEDICAL CENTER

Location Map - TIMBERHILL SHOPPING CENTER



The information in this package was obtained from sources deemed reliable, and is not guaranteed by agent. Package is subject to change, error or omission, prior sale or lease, correction or withdrawal. Any party contemplating purchase is urged to conduct their own independent study and inspection.