



BERNAL CORPORATE PLAZA

6700 & 6800

SYCAMORE PLAZA

6701 & 6801

KOLL CENTER PARKWAY

PLEASANTON, CA

NEWMARK

KGIP

 **Principal**



BERNAL CORPORATE PLAZA

6700 & 6800



Two 3-Story Buildings



± 110,750 SF per Building



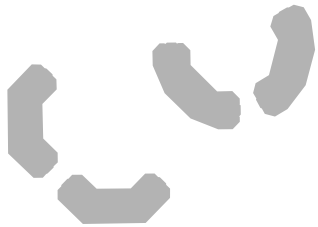
Typical Floor Size ± 38,695 SF



Parking 3.82/1,000 SF

BERNAL & SYCAMORE PLAZAS

A City Within A City



- Located within Bernal Corporate Park, a 1.2 million square foot 99-acre master-planned business park community with office, R&D and retail space
- Both buildings are LEED Gold Certified and Energy Star Rated
- New onsite Café
- New onsite fitness room with lockers and showers, exclusive to Bernal and Sycamore Tenants
- New onsite common conference room seating up to 30, free of charge, exclusive to Bernal and Sycamore Tenants
- Excellent visibility and building identity
- Excellent freeway access to I-680
- BART access via Wheels
- 1/2 mile from historic downtown Pleasanton with hotels, restaurants and many other amenities
- Child care facility, walking trail and par course in Bernal Corporate Park
- On-site property management
- Located walking distance to Pleasanton Gateway Retail Plaza, a new Safeway life style center and Bernal Retail Plaza

SYCAMORE PLAZA

6701 & 6801



Two 4-Story Buildings



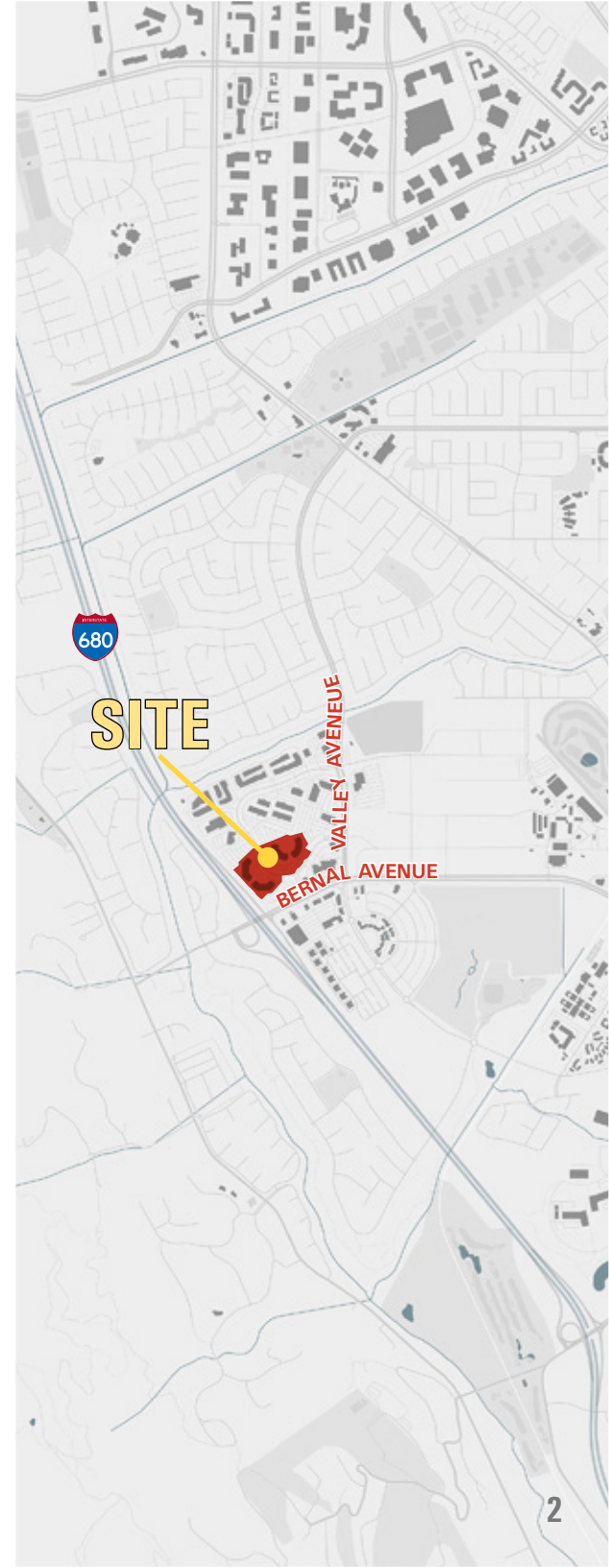
± 124,000 SF per Building



Typical Floor Size ± 32,000 SF



Parking 3.82/1,000 SF



EXCLUSIVE AGENTS

JEFF MORGENSTERN SENIOR MANAGING DIRECTOR

925.467.0905 | JEFF.MORGENSTERN@NMRK.COM | CA RE LICENSE #01275910

DAN WATSON EXECUTIVE VICE PRESIDENT

925.467.0903 | DAN.WATSON@NMRK.COM | CA RE LICENSE #01438710

BERNAL CORPORATE PLAZA

6700 & 6800

EMPLOYEE OUTDOOR AREA



SYCAMORE PLAZA

6701 & 6801

EXCLUSIVE AGENTS

JEFF MORGENSTERN SENIOR MANAGING DIRECTOR
925.467.0905 | JEFF.MORGENSTERN@NMRK.COM | CA RE LICENSE #01275910

DAN WATSON EXECUTIVE VICE PRESIDENT
925.467.0903 | DAN.WATSON@NMRK.COM | CA RE LICENSE #01438710

BUILDING AMENITIES



Cafe



Fitness Center



Conference Room



Conference Room

SYCAMORE PLAZA

6701 & 6801

EXCLUSIVE AGENTS

JEFF MORGENSTERN SENIOR MANAGING DIRECTOR
925.467.0905 | JEFF.MORGENSTERN@NMRK.COM | CA RE LICENSE #01275910

DAN WATSON EXECUTIVE VICE PRESIDENT
925.467.0903 | DAN.WATSON@NMRK.COM | CA RE LICENSE #01438710

BERNAL CORPORATE PLAZA

6700 & 6800

AMENITIES AERIAL



Bernal Corporate Plaza

Primrose School of Pleasanton

Koll Center Pkwy

Sycamore Plaza

Valley Ave

680

Sultan's Mediterranean

Mexico Lindo

Bernal Ave

I-680/Bernal Ave Exit

SYCAMORE PLAZA

6701 & 6801

EXCLUSIVE AGENTS

JEFF MORGENSTERN SENIOR MANAGING DIRECTOR
925.467.0905 | JEFF.MORGENSTERN@NMRK.COM | CA RE LICENSE #01275910

DAN WATSON EXECUTIVE VICE PRESIDENT
925.467.0903 | DAN.WATSON@NMRK.COM | CA RE LICENSE #01438710

BERNAL CORPORATE PLAZA

AVAILABLE SPACE



BUILDING	SUITE	SF	Floorplan	COMMENTS
6700	255	± 1,955 RSF	P8	Three offices, conference room, open area.
6700	119	± 1,985 RSF	P9	Three offices, conference room, kitchen, open area.
6700	260	± 2,079 RSF	P10	Three offices, kitchen and open area.
6700	240	± 2,215 RSF	P11	Four offices, conference room, kitchen, open area.
6800	215	± 2,377 RSF	P12	One office, conference room, kitchen and open area.
6800	300	± 2,521 RSF	P13	Three offices, conference room, kitchen and open area.
6700	215	± 2,559 RSF	P14	Four offices, conference room, kitchen, open area.
6700	125	± 3,734 RSF	P15	Double door entry from the Building Lobby. Four offices, conference room, kitchen and open area.
6700	330	± 4,448 RSF	P16	Eight offices, two conference rooms, kitchen and open area.
6700	250	± 5,278 RSF	P17	Eight private offices, conference room, kitchen and open area. <i>HYPOTHETICAL</i>
6700	109	± 7,691 RSF	P18	Ten offices, conference room, kitchen, open area.
6800	230	± 7,734 RSF	P19	Double-door entry off elevator landing. Mix of offices, open areas and a large conference room.
6800	310	± 13,116 RSF	P20	Mix of offices and open area.
6700	350	± 19,932 RSF	P21	Divisible. Double door entry from the elevator lobby. Combination of offices and open area

BERNAL CORPORATE PLAZA

6700 & 6800

EXCLUSIVE AGENTS

JEFF MORGENSTERN SENIOR MANAGING DIRECTOR
 925.467.0905 | JEFF.MORGENSTERN@NMRK.COM | CA RE LICENSE #01275910

DAN WATSON EXECUTIVE VICE PRESIDENT
 925.467.0903 | DAN.WATSON@NMRK.COM | CA RE LICENSE #01438710

SYCAMORE PLAZA

AVAILABLE SPACE



BUILDING	SUITE	SF	Floorplan	COMMENTS
6701	Café - 100	± 1,396 RSF	P22	Newly built out and furnished CAFÉ space, with walk-in refrigerator and buffet line equipment. Available Now. Total area is 3,280 RSF.
6701	340	± 1,728 RSF	P23	Conference room, open break area, open area.
6701	240	± 4,651 RSF	P24	Combination of offices, conference room, kitchen and open area. Available 5/1/2025
6801	150	± 5,202 RSF	P25	Ground floor lobby double door entry. Combination of office and conference room, kitchen and open area.
6701	450	± 5,726 RSF	P26	Divisible to ± 2,237 RSF. Spectacular views with open floor plan and market ready improvements.
6801	220	± 9,066 RSF	P27	Double door entry, mix of offices and open area. Available 5/1/2025
6701	200	± 10,172 RSF	P28	Double door entry from elevator landing. Mix of offices, conference rooms, and open area. (Divisible)
6801	200	± 16,699 RSF	P29	Double door entry off of the elevator landing, with mix of open area, offices, storage and large kitchen area.
6801	400	± 32,848 RSF	P30	Full floor available.
6801	Multiple	Up to ± 82,395 RSF	NA	Up to 2.5 floors available with parapet building signage available.

**SYCAMORE
PLAZA** 6701 & 6801

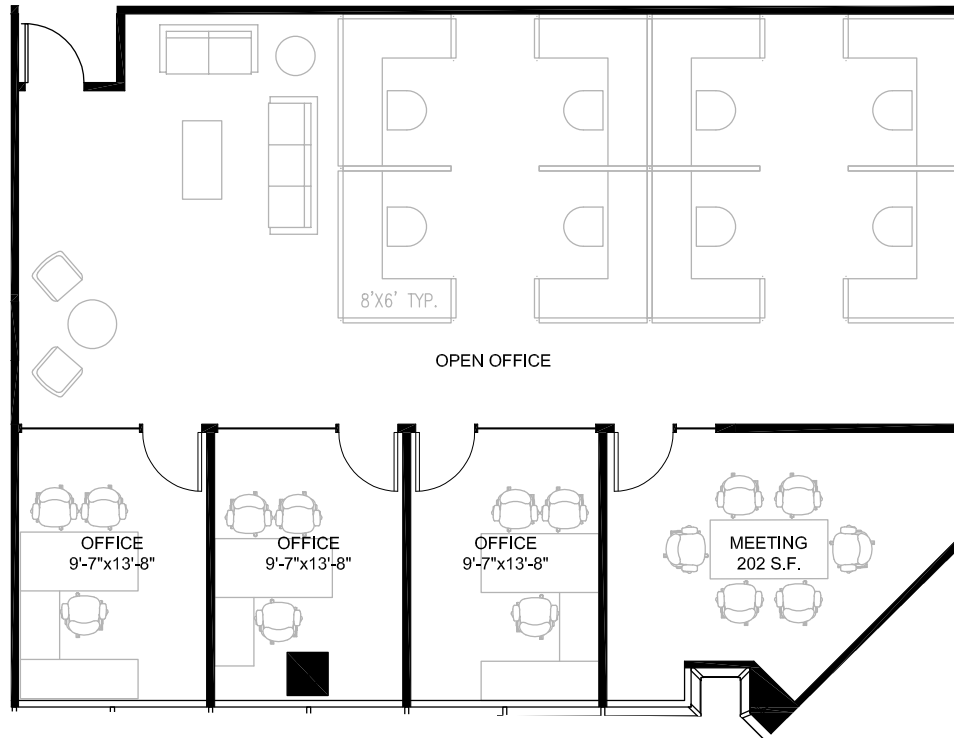
EXCLUSIVE AGENTS

JEFF MORGENSTERN SENIOR MANAGING DIRECTOR
925.467.0905 | JEFF.MORGENSTERN@NMRK.COM | CA RE LICENSE #01275910

DAN WATSON EXECUTIVE VICE PRESIDENT
925.467.0903 | DAN.WATSON@NMRK.COM | CA RE LICENSE #01438710

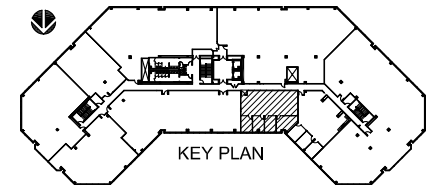
FLOOR PLANS

Available Space



**BERNAL CORPORATE
PLAZA 6700**

STE 255 / ± 1,955 RSF



EXCLUSIVE AGENTS

JEFF MORGENSTERN SENIOR MANAGING DIRECTOR

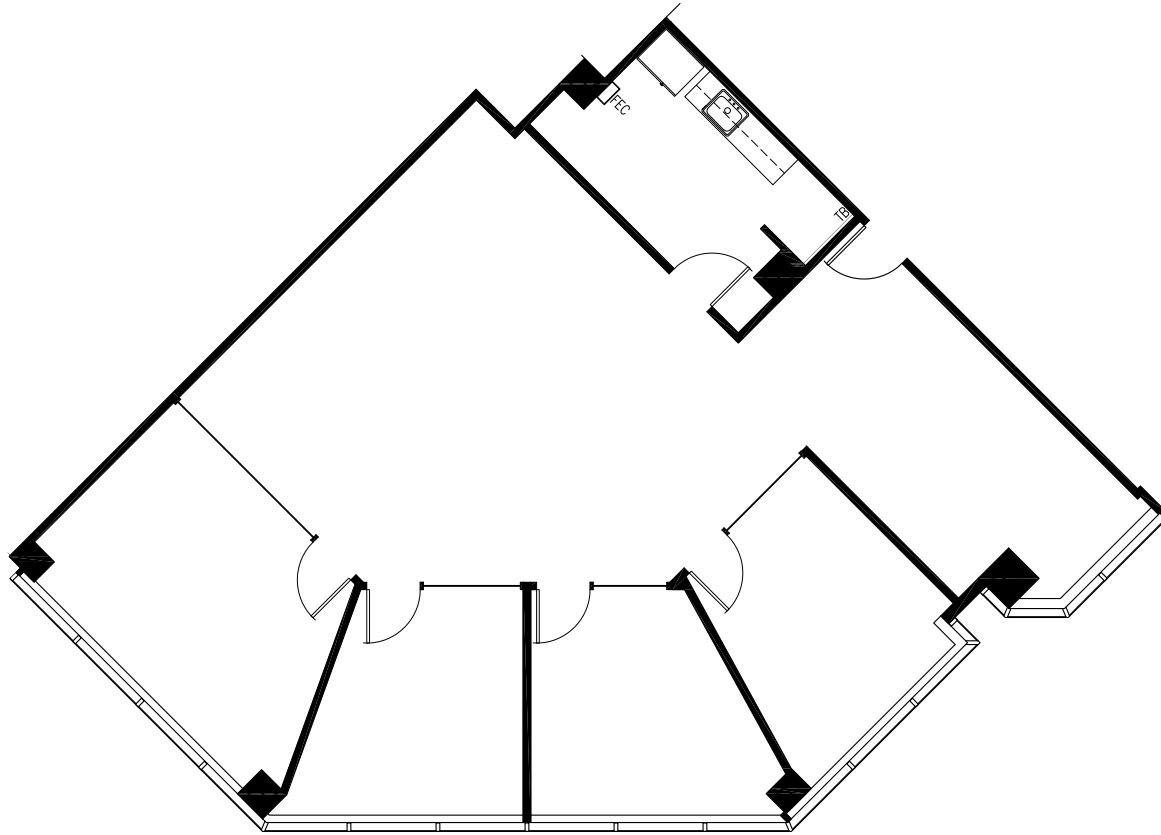
925.467.0905 | JEFF.MORGENSTERN@NMRK.COM | CA RE LICENSE #01275910

DAN WATSON EXECUTIVE VICE PRESIDENT

925.467.0903 | DAN.WATSON@NMRK.COM | CA RE LICENSE #01438710

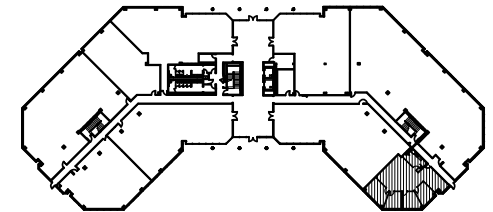
FLOOR PLANS

Available Space



**BERNAL CORPORATE
PLAZA 6700**

STE 119 / ±1,985 RSF



KEY PLAN

EXCLUSIVE AGENTS

JEFF MORGENSTERN SENIOR MANAGING DIRECTOR

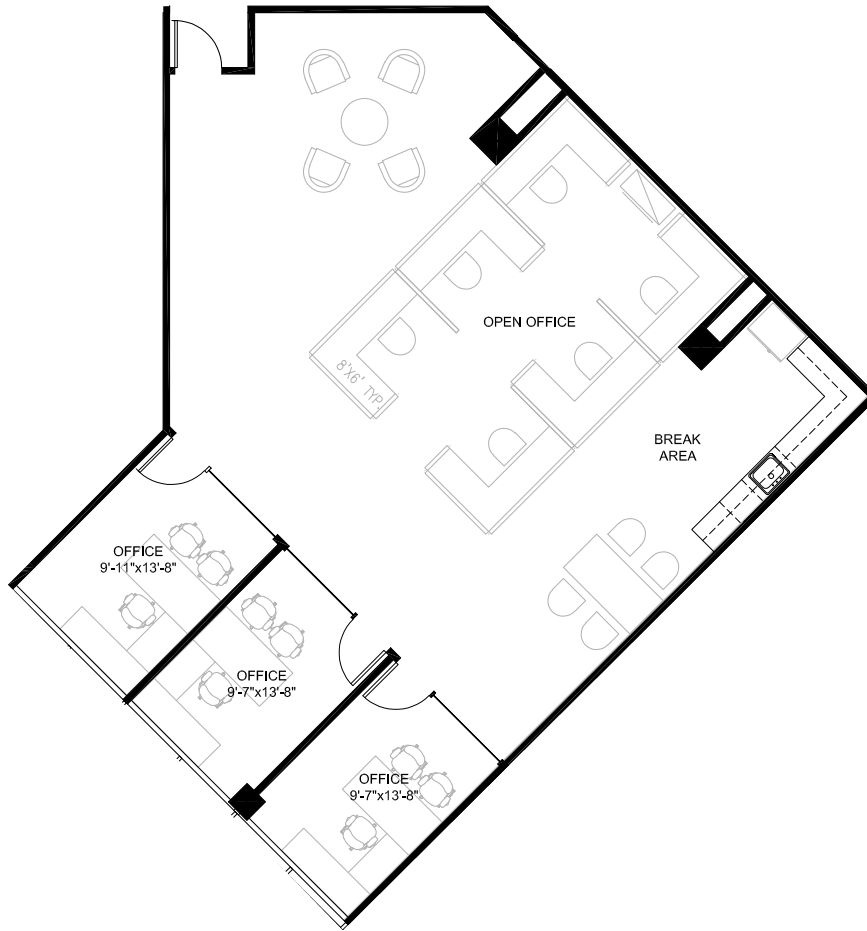
925.467.0905 | JEFF.MORGENSTERN@NMRK.COM | CA RE LICENSE #01275910

DAN WATSON EXECUTIVE VICE PRESIDENT

925.467.0903 | DAN.WATSON@NMRK.COM | CA RE LICENSE #01438710

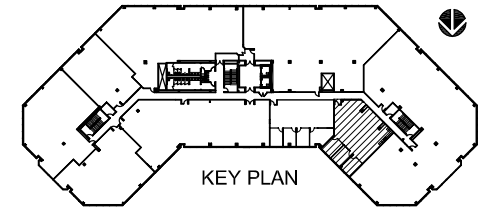
FLOOR PLANS

Available Space



**BERNAL CORPORATE
PLAZA 6700**

STE 260 / ±2,079 RSF



EXCLUSIVE AGENTS

JEFF MORGENSTERN SENIOR MANAGING DIRECTOR

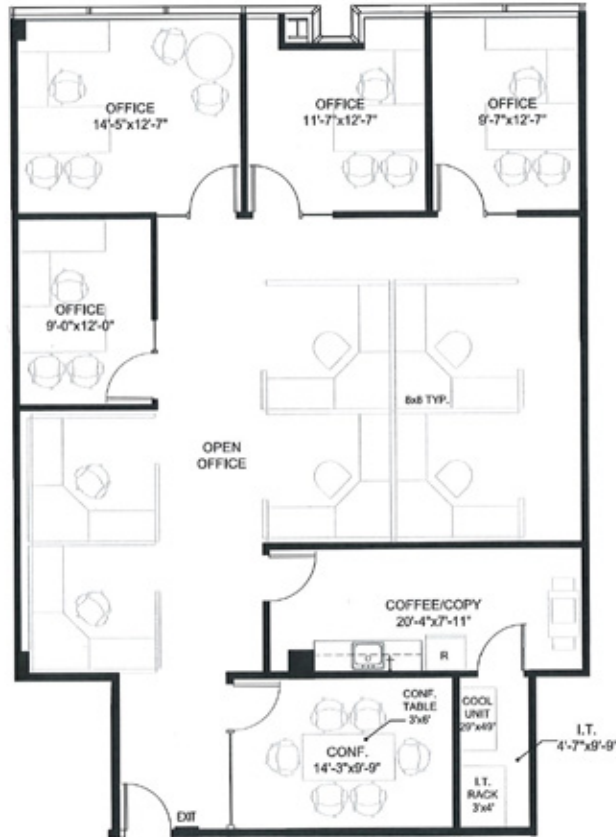
925.467.0905 | JEFF.MORGENSTERN@NMRK.COM | CA RE LICENSE #01275910

DAN WATSON EXECUTIVE VICE PRESIDENT

925.467.0903 | DAN.WATSON@NMRK.COM | CA RE LICENSE #01438710

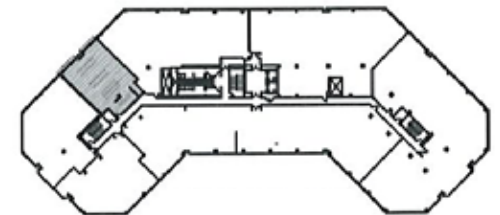
FLOOR PLANS

Available Space



**BERNAL CORPORATE
PLAZA 6700**

STE 240 / ±2,215 RSF



EXCLUSIVE AGENTS

JEFF MORGENSTERN SENIOR MANAGING DIRECTOR

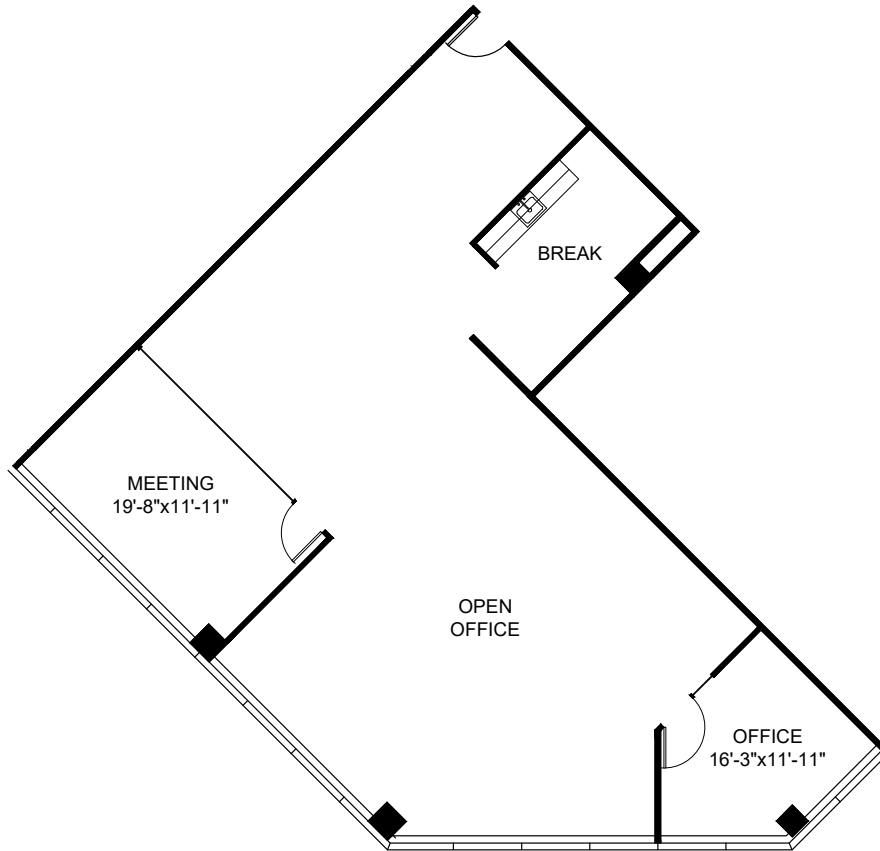
925.467.0905 | JEFF.MORGENSTERN@NMRK.COM | CA RE LICENSE #01275910

DAN WATSON EXECUTIVE VICE PRESIDENT

925.467.0903 | DAN.WATSON@NMRK.COM | CA RE LICENSE #01438710

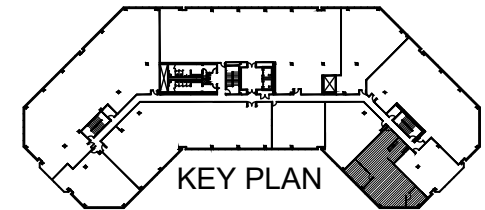
FLOOR PLANS

Available Space



**BERNAL CORPORATE
PLAZA 6800**

STE 215 / ±2,377 RSF



EXCLUSIVE AGENTS

JEFF MORGENSTERN SENIOR MANAGING DIRECTOR

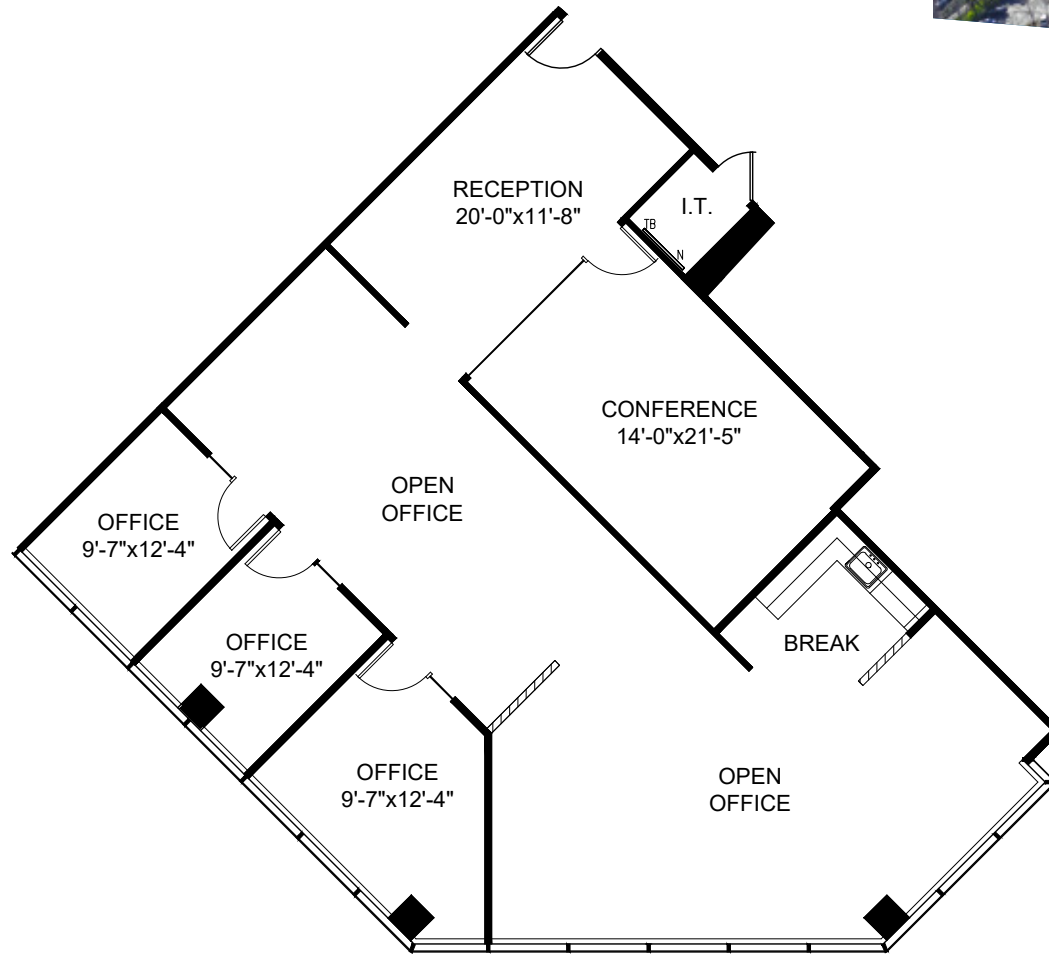
925.467.0905 | JEFF.MORGENSTERN@NMRK.COM | CA RE LICENSE #01275910

DAN WATSON EXECUTIVE VICE PRESIDENT

925.467.0903 | DAN.WATSON@NMRK.COM | CA RE LICENSE #01438710

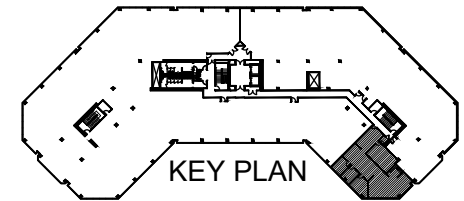
FLOOR PLANS

Available Space



**BERNAL CORPORATE
PLAZA 6800**

STE 300 / ±2,521 RSF



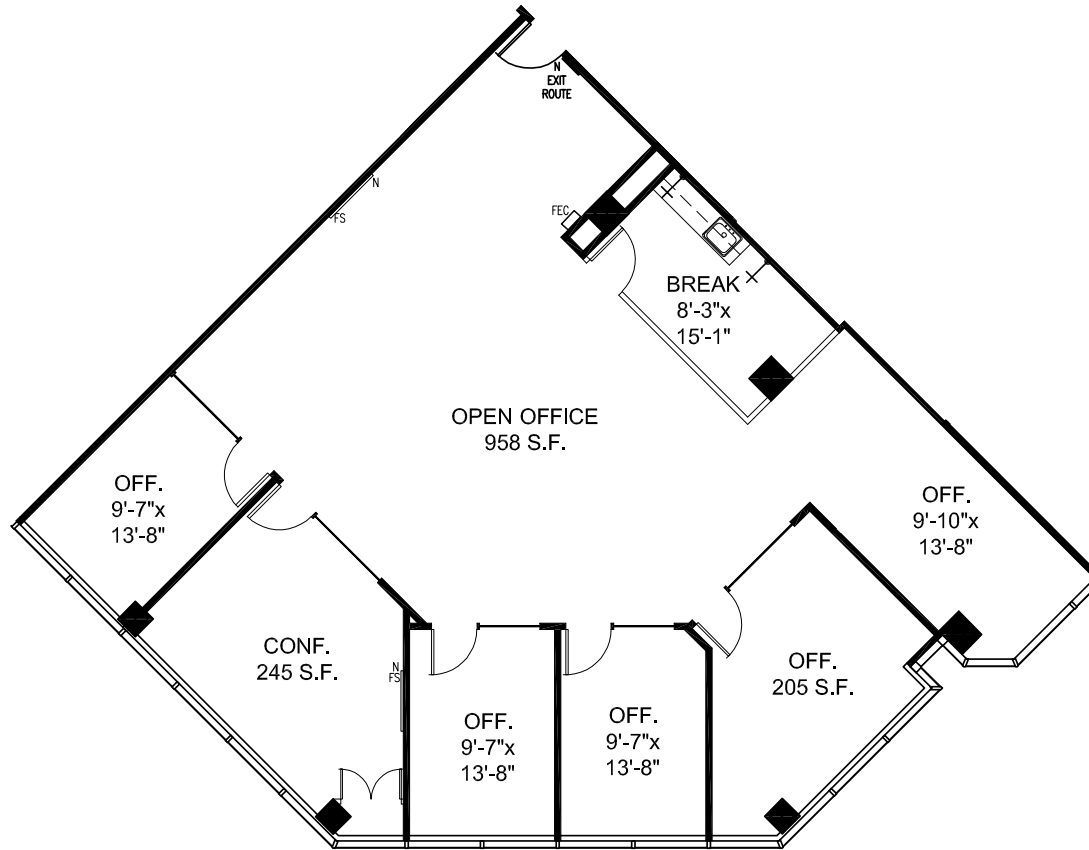
EXCLUSIVE AGENTS

JEFF MORGENSTERN SENIOR MANAGING DIRECTOR
925.467.0905 | JEFF.MORGENSTERN@NMRK.COM | CA RE LICENSE #01275910

DAN WATSON EXECUTIVE VICE PRESIDENT
925.467.0903 | DAN.WATSON@NMRK.COM | CA RE LICENSE #01438710

FLOOR PLANS

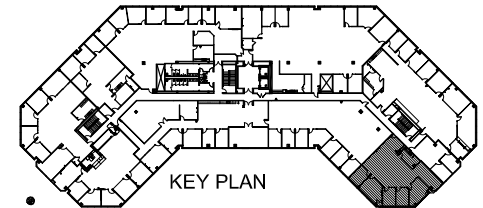
Available Space



Hypothetical

**BERNAL CORPORATE
PLAZA 6700**

STE 215 / ±2,559 RSF



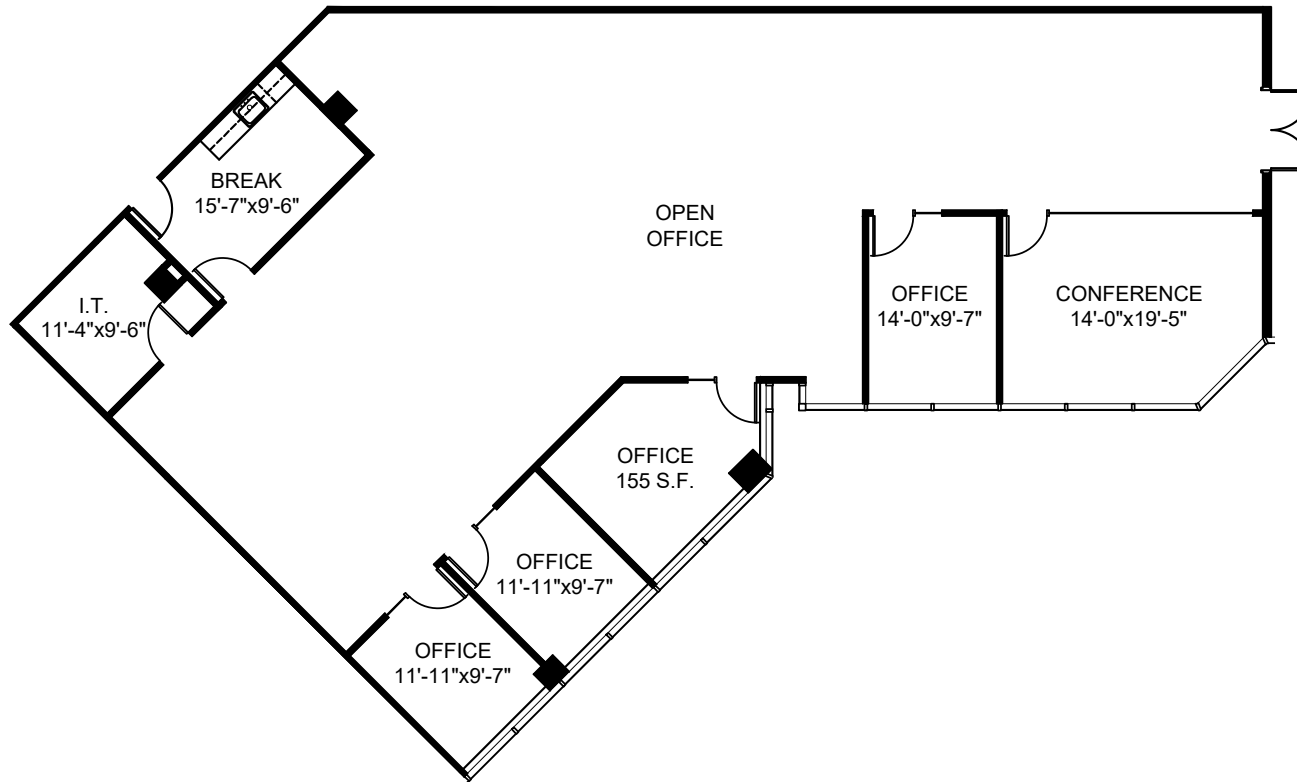
EXCLUSIVE AGENTS

JEFF MORGENSTERN SENIOR MANAGING DIRECTOR
925.467.0905 | JEFF.MORGENSTERN@NMRK.COM | CA RE LICENSE #01275910

DAN WATSON EXECUTIVE VICE PRESIDENT
925.467.0903 | DAN.WATSON@NMRK.COM | CA RE LICENSE #01438710

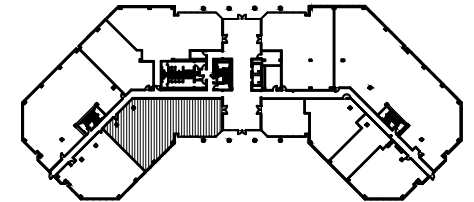
FLOOR PLANS

Available Space



**BERNAL CORPORATE
PLAZA 6700**

STE 125 | ±3,734 RSF



EXCLUSIVE AGENTS

JEFF MORGENSTERN SENIOR MANAGING DIRECTOR

925.467.0905 | JEFF.MORGENSTERN@NMRK.COM | CA RE LICENSE #01275910

DAN WATSON EXECUTIVE VICE PRESIDENT

925.467.0903 | DAN.WATSON@NMRK.COM | CA RE LICENSE #01438710

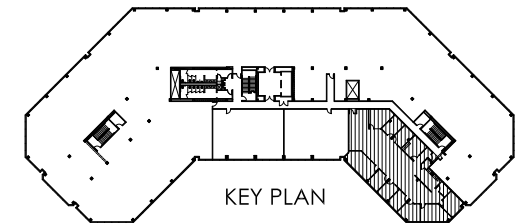
FLOOR PLANS

Available Space



**BERNAL CORPORATE
PLAZA 6700**

STE 330 / ±4,448 RSF



EXCLUSIVE AGENTS

JEFF MORGENSTERN SENIOR MANAGING DIRECTOR

925.467.0905 | JEFF.MORGENSTERN@NMRK.COM | CA RE LICENSE #01275910

DAN WATSON EXECUTIVE VICE PRESIDENT

925.467.0903 | DAN.WATSON@NMRK.COM | CA RE LICENSE #01438710

FLOOR PLANS

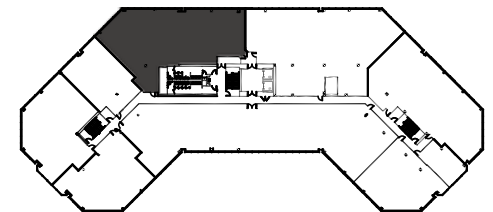
Available Space



Hypothetical

**BERNAL CORPORATE
PLAZA 6700**

STE 250 / ±5,278 RSF



EXCLUSIVE AGENTS

JEFF MORGENSTERN SENIOR MANAGING DIRECTOR

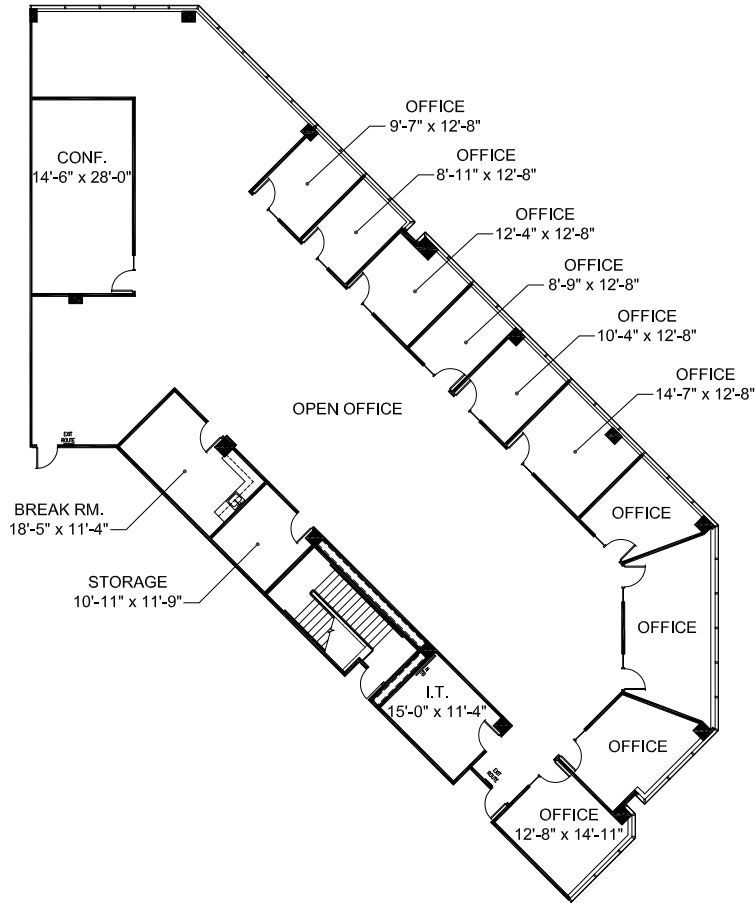
925.467.0905 | JEFF.MORGENSTERN@NMRK.COM | CA RE LICENSE #01275910

DAN WATSON EXECUTIVE VICE PRESIDENT

925.467.0903 | DAN.WATSON@NMRK.COM | CA RE LICENSE #01438710

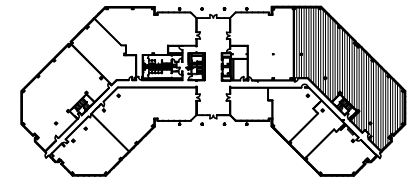
FLOOR PLANS

Available Space



**BERNAL CORPORATE
PLAZA 6700**

STE 109 / ±7,691 RSF



EXCLUSIVE AGENTS

JEFF MORGENSTERN SENIOR MANAGING DIRECTOR

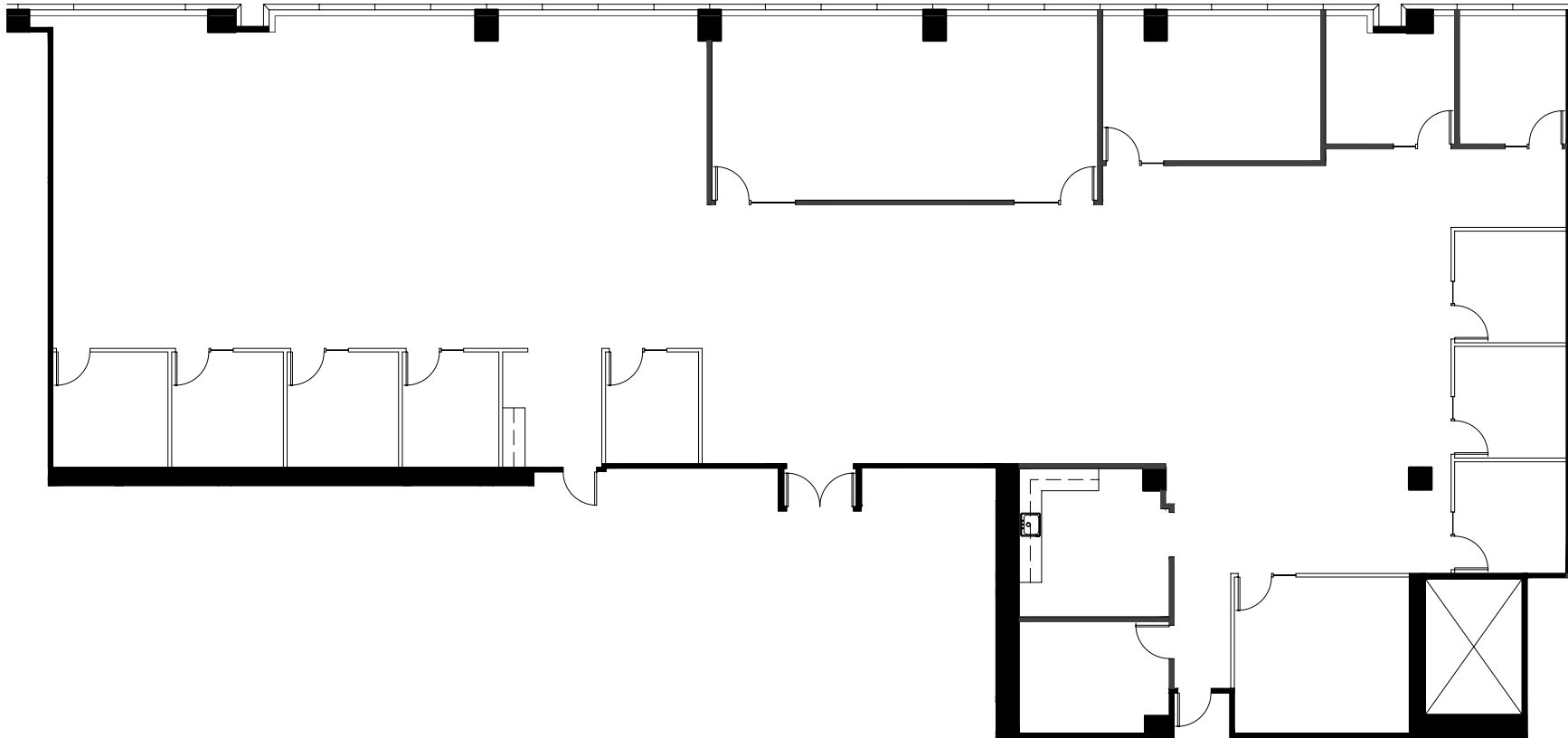
925.467.0905 | JEFF.MORGENSTERN@NMRK.COM | CA RE LICENSE #01275910

DAN WATSON EXECUTIVE VICE PRESIDENT

925.467.0903 | DAN.WATSON@NMRK.COM | CA RE LICENSE #01438710

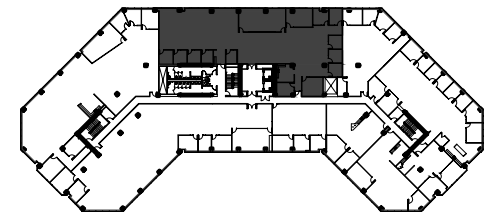
FLOOR PLANS

Available Space



**BERNAL CORPORATE
PLAZA 6800**

STE 230 | ±7,734 RSF



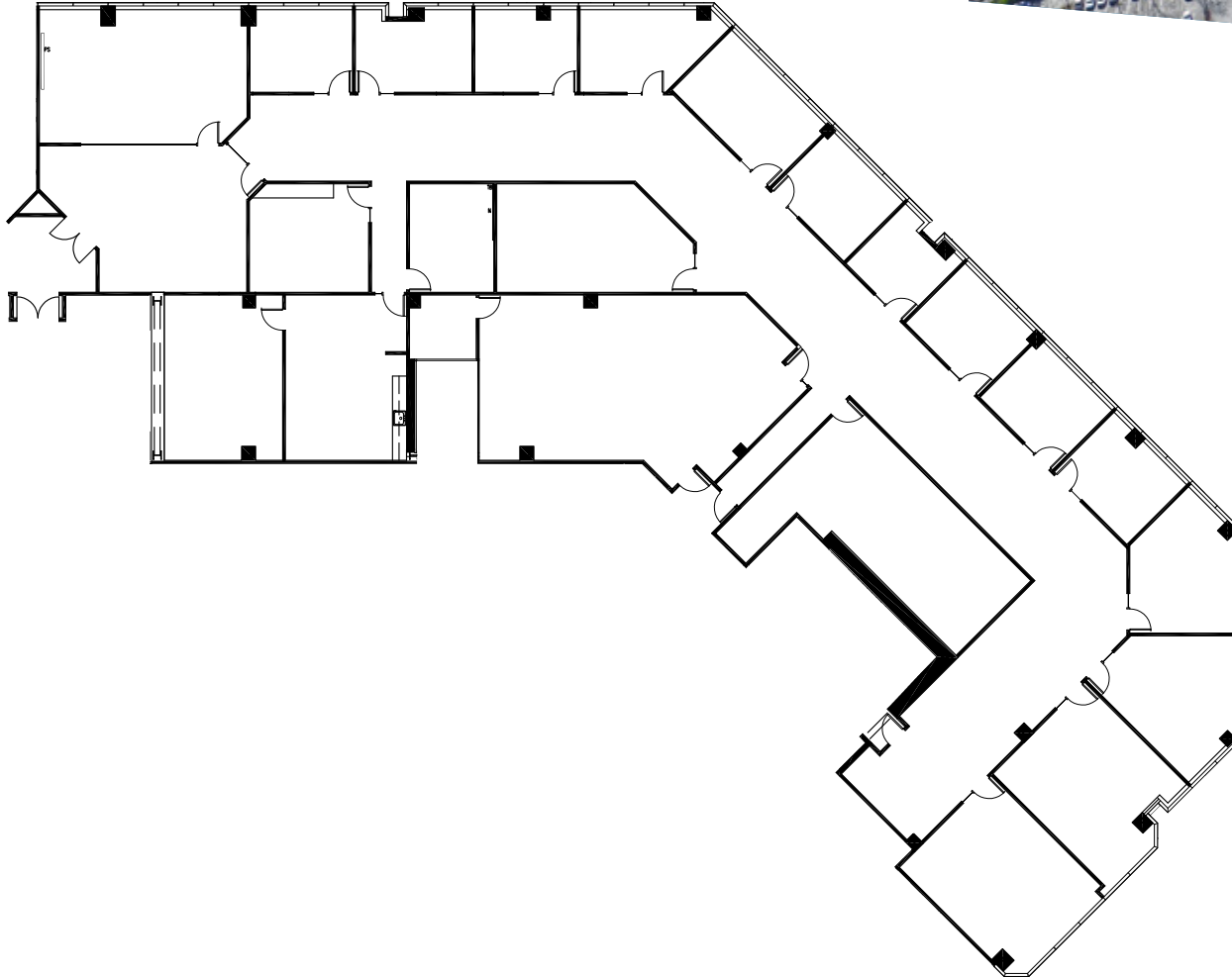
EXCLUSIVE AGENTS

JEFF MORGENSTERN SENIOR MANAGING DIRECTOR
925.467.0905 | JEFF.MORGENSTERN@NMRK.COM | CA RE LICENSE #01275910

DAN WATSON EXECUTIVE VICE PRESIDENT
925.467.0903 | DAN.WATSON@NMRK.COM | CA RE LICENSE #01438710

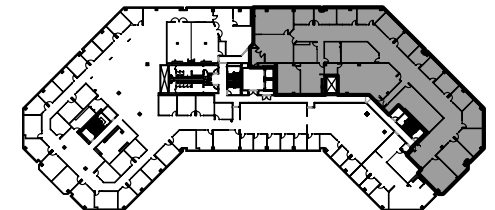
FLOOR PLANS

Available Space



**BERNAL CORPORATE
PLAZA 6800**

STE 310 / ± 13,116 RSF



EXCLUSIVE AGENTS

JEFF MORGENSTERN SENIOR MANAGING DIRECTOR

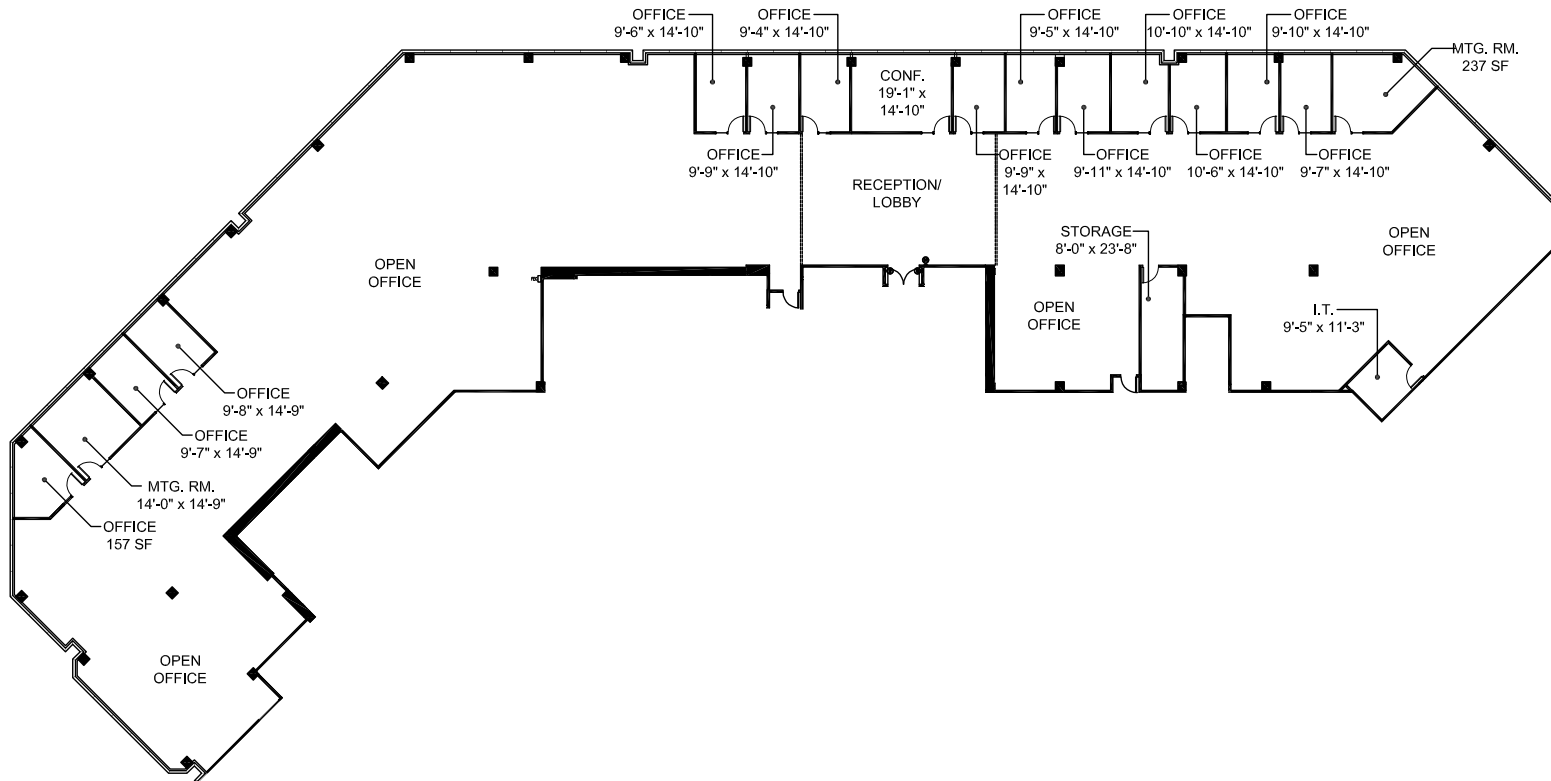
925.467.0905 | JEFF.MORGENSTERN@NMRK.COM | CA RE LICENSE #01275910

DAN WATSON EXECUTIVE VICE PRESIDENT

925.467.0903 | DAN.WATSON@NMRK.COM | CA RE LICENSE #01438710

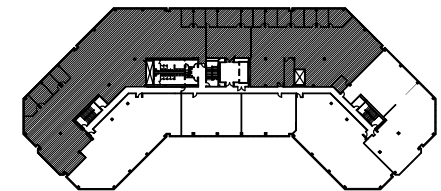
FLOOR PLANS

Available Space



**BERNAL CORPORATE
PLAZA 6700**

STE 350 / ± 19,932 RSF



KEY PLAN

EXCLUSIVE AGENTS

JEFF MORGENSTERN SENIOR MANAGING DIRECTOR

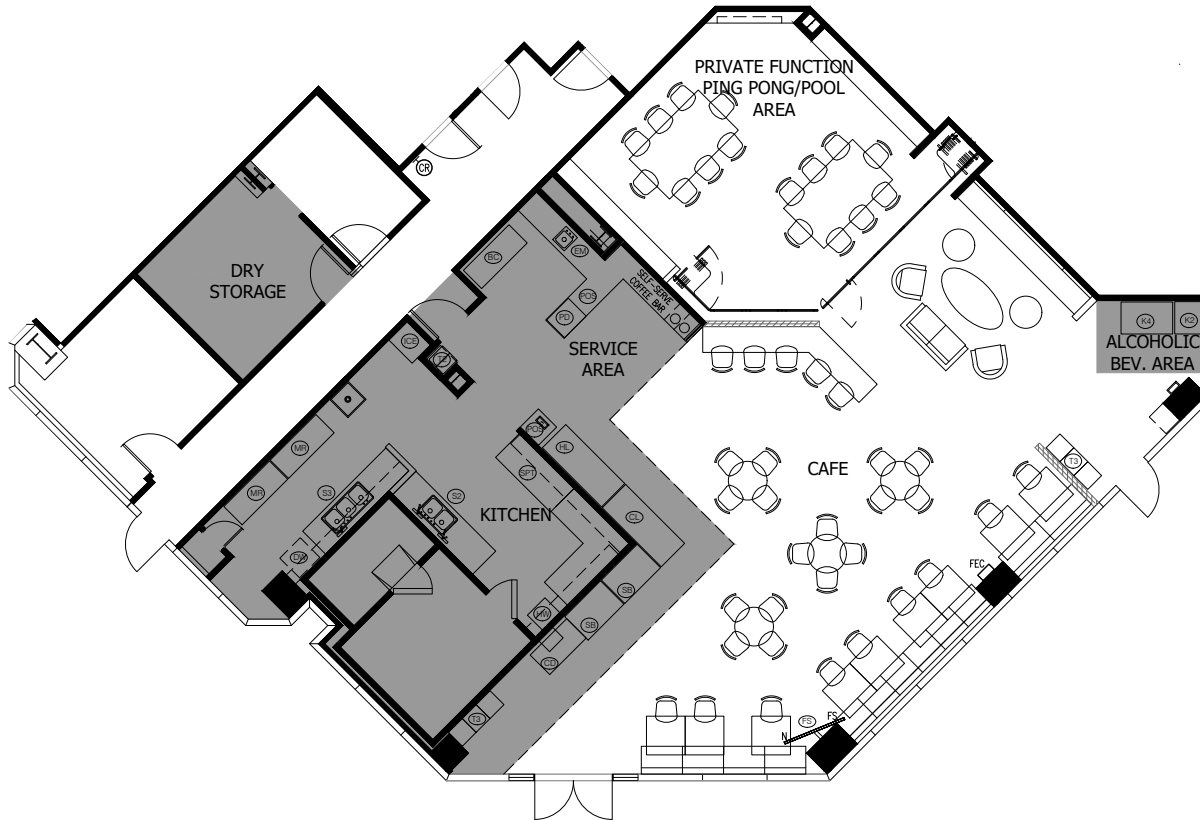
925.467.0905 | JEFF.MORGENSTERN@NMRK.COM | CA RE LICENSE #01275910

DAN WATSON EXECUTIVE VICE PRESIDENT

925.467.0903 | DAN.WATSON@NMRK.COM | CA RE LICENSE #01438710

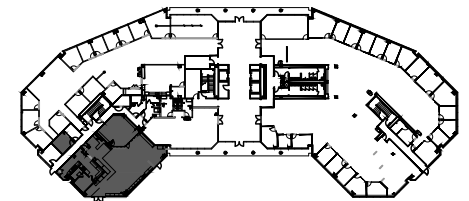
FLOOR PLANS

Available Space



**SYCAMORE
PLAZA 6701**

CAFE-STE 100 / ± 1,396 RSF



EXCLUSIVE AGENTS

JEFF MORGENSTERN SENIOR MANAGING DIRECTOR

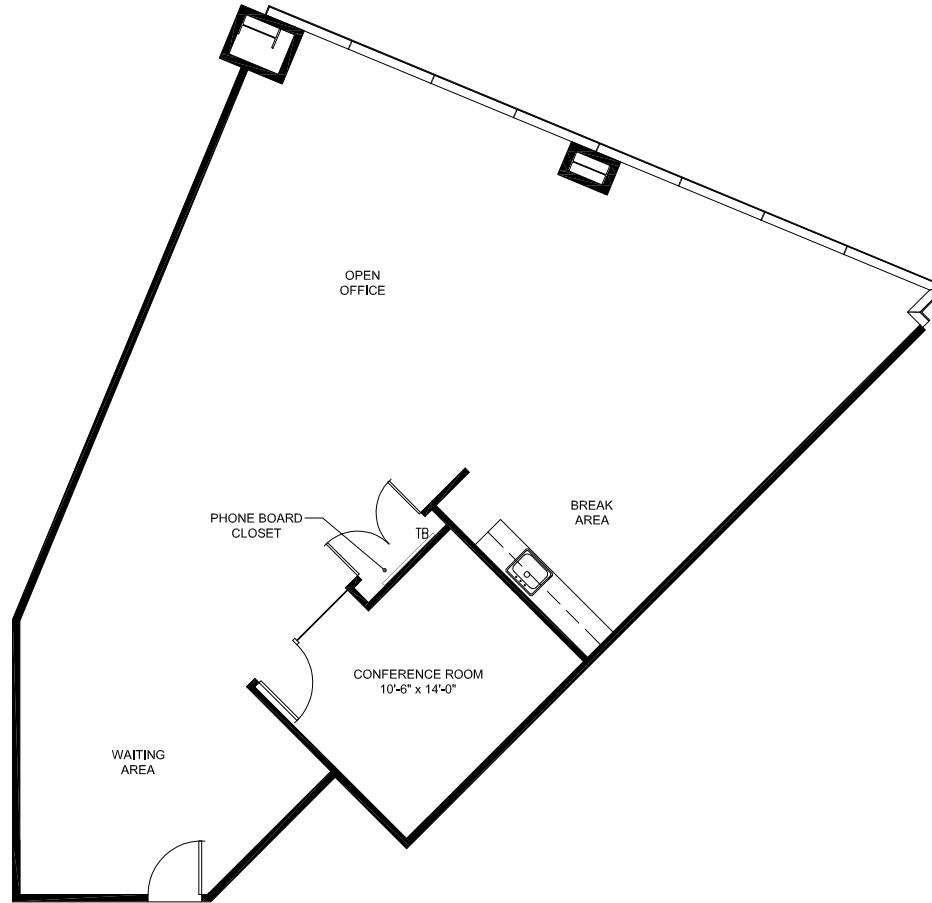
925.467.0905 | JEFF.MORGENSTERN@NMRK.COM | CA RE LICENSE #01275910

DAN WATSON EXECUTIVE VICE PRESIDENT

925.467.0903 | DAN.WATSON@NMRK.COM | CA RE LICENSE #01438710

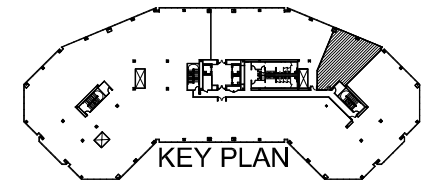
FLOOR PLANS

Available Space



**SYCAMORE
PLAZA 6701**

STE 340 / ±1,728 RSF



EXCLUSIVE AGENTS

JEFF MORGENSTERN SENIOR MANAGING DIRECTOR

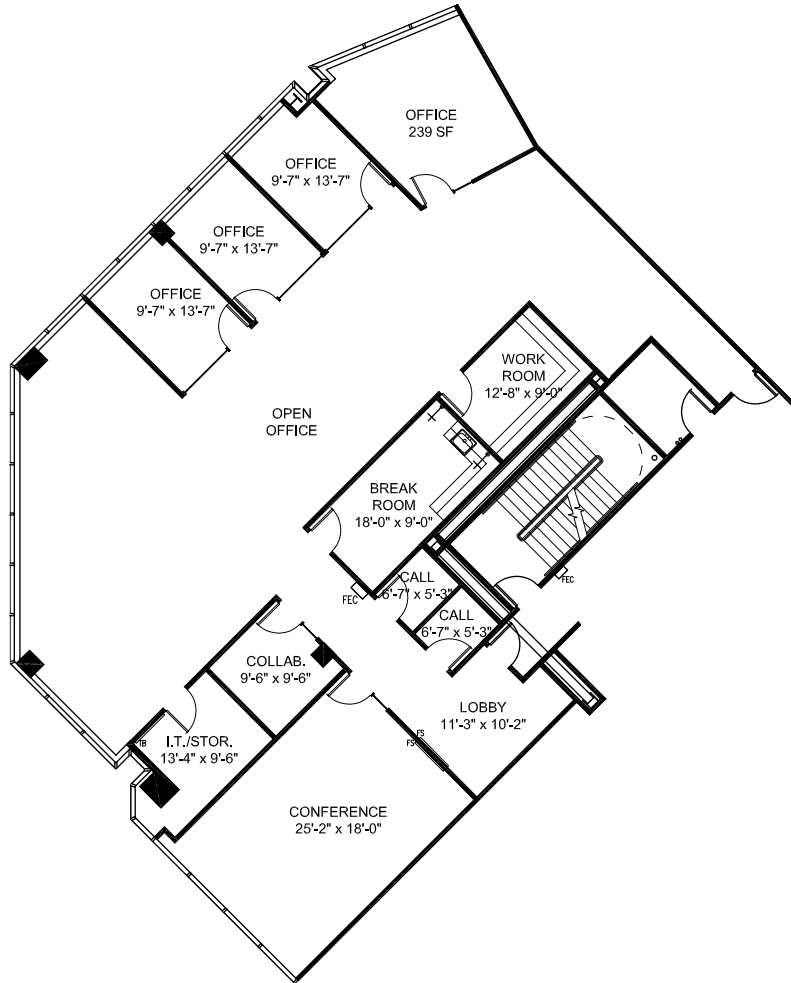
925.467.0905 | JEFF.MORGENSTERN@NMRK.COM | CA RE LICENSE #01275910

DAN WATSON EXECUTIVE VICE PRESIDENT

925.467.0903 | DAN.WATSON@NMRK.COM | CA RE LICENSE #01438710

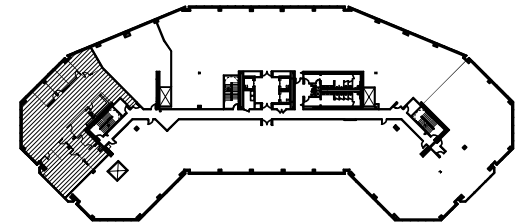
FLOOR PLANS

Available Space



**SYCAMORE
PLAZA 6701**

STE 240 / ±4,651 RSF



EXCLUSIVE AGENTS

JEFF MORGENSTERN SENIOR MANAGING DIRECTOR

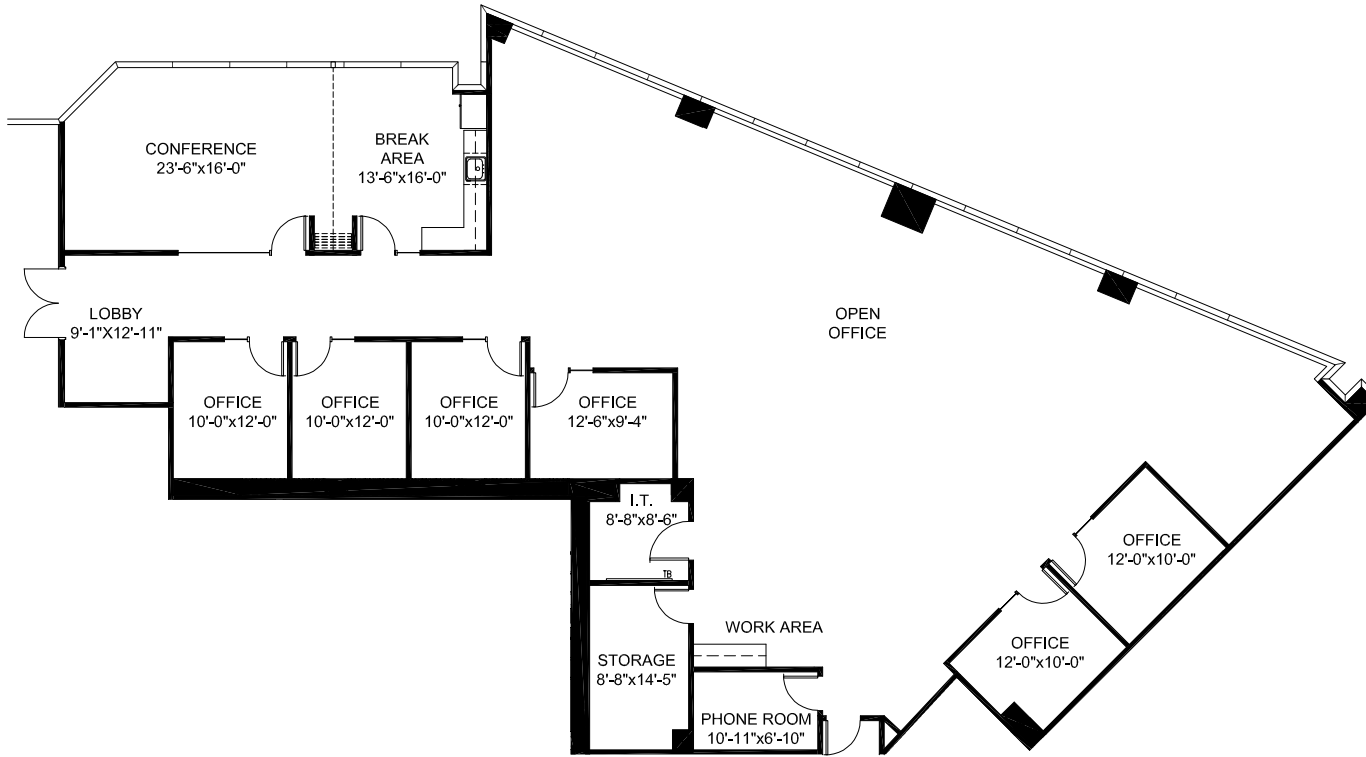
925.467.0905 | JEFF.MORGENSTERN@NMRK.COM | CA RE LICENSE #01275910

DAN WATSON EXECUTIVE VICE PRESIDENT

925.467.0903 | DAN.WATSON@NMRK.COM | CA RE LICENSE #01438710

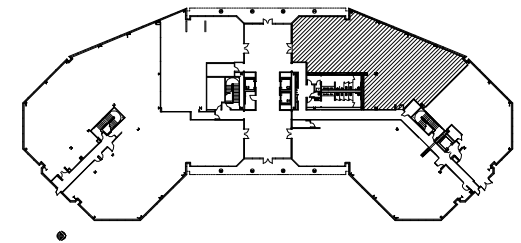
FLOOR PLANS

Available Space



**SYCAMORE
PLAZA 6801**

STE 150 / ±5,202 RSF



EXCLUSIVE AGENTS

JEFF MORGENSTERN SENIOR MANAGING DIRECTOR

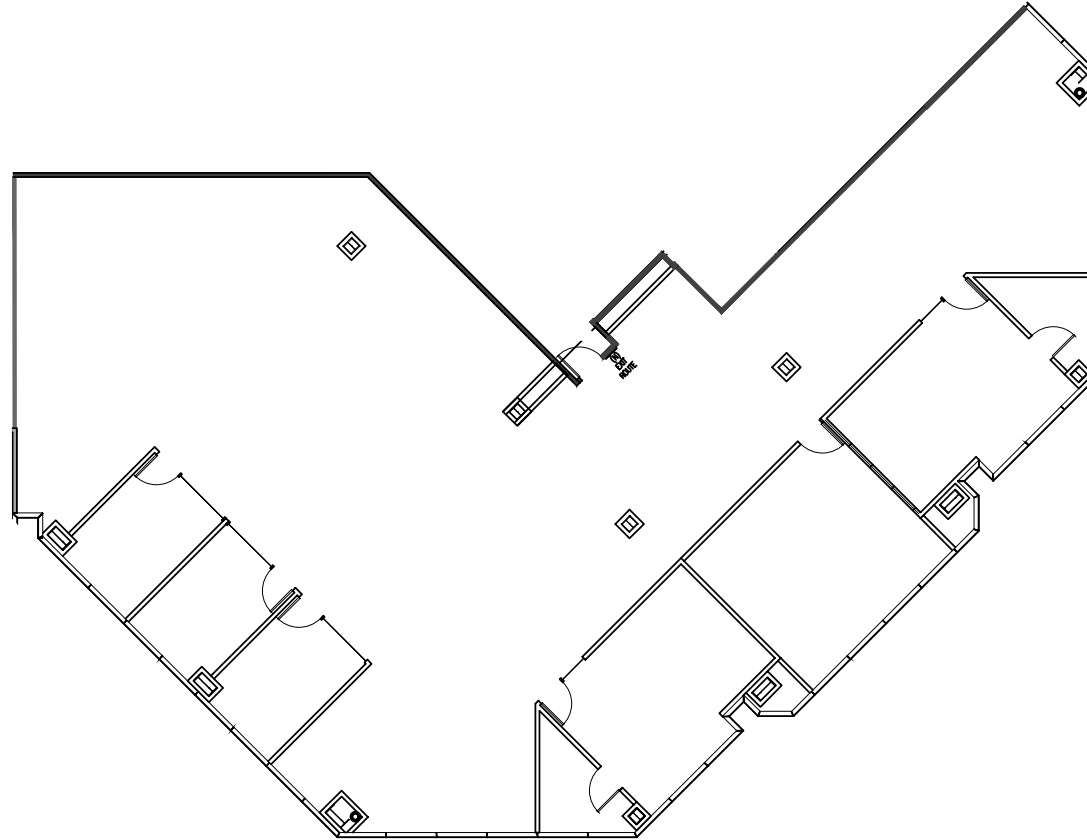
925.467.0905 | JEFF.MORGENSTERN@NMRK.COM | CA RE LICENSE #01275910

DAN WATSON EXECUTIVE VICE PRESIDENT

925.467.0903 | DAN.WATSON@NMRK.COM | CA RE LICENSE #01438710

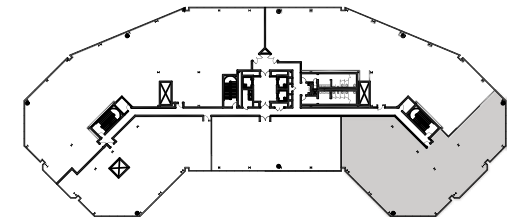
FLOOR PLANS

Available Space



**SYCAMORE
PLAZA 6701**

STE 450 / ±5,726 RSF



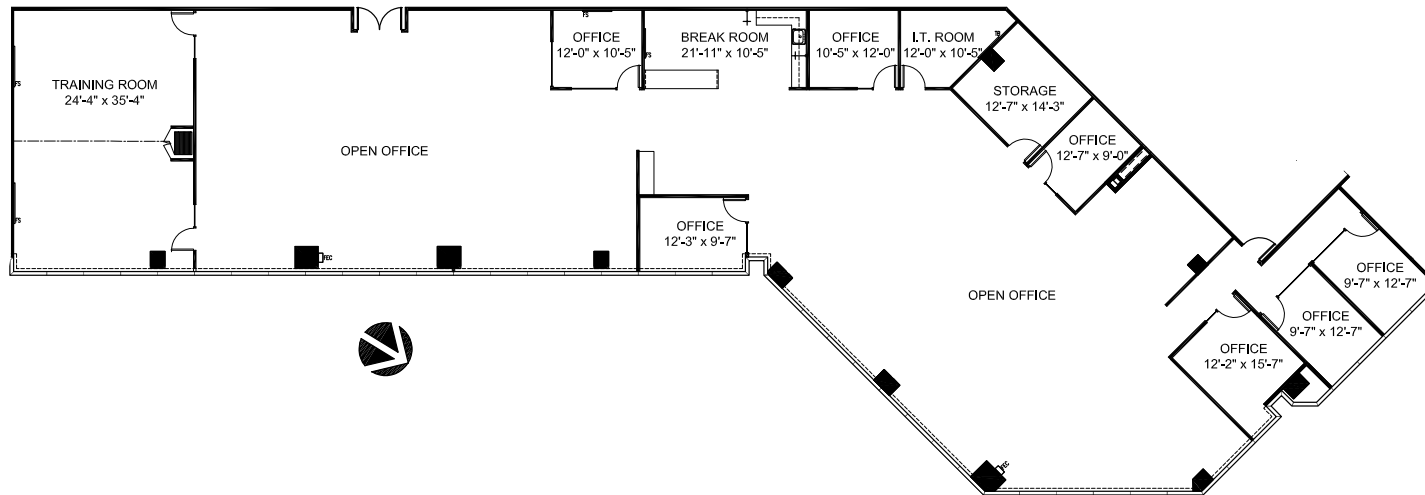
EXCLUSIVE AGENTS

JEFF MORGENSTERN SENIOR MANAGING DIRECTOR
925.467.0905 | JEFF.MORGENSTERN@NMRK.COM | CA RE LICENSE #01275910

DAN WATSON EXECUTIVE VICE PRESIDENT
925.467.0903 | DAN.WATSON@NMRK.COM | CA RE LICENSE #01438710

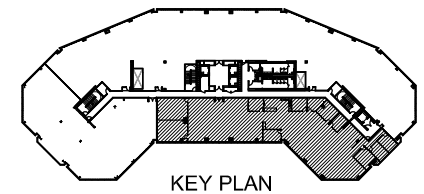
FLOOR PLANS

Available Space



**SYCAMORE
PLAZA 6801**

STE 220 / ±9,066 RSF



EXCLUSIVE AGENTS

JEFF MORGENSTERN SENIOR MANAGING DIRECTOR

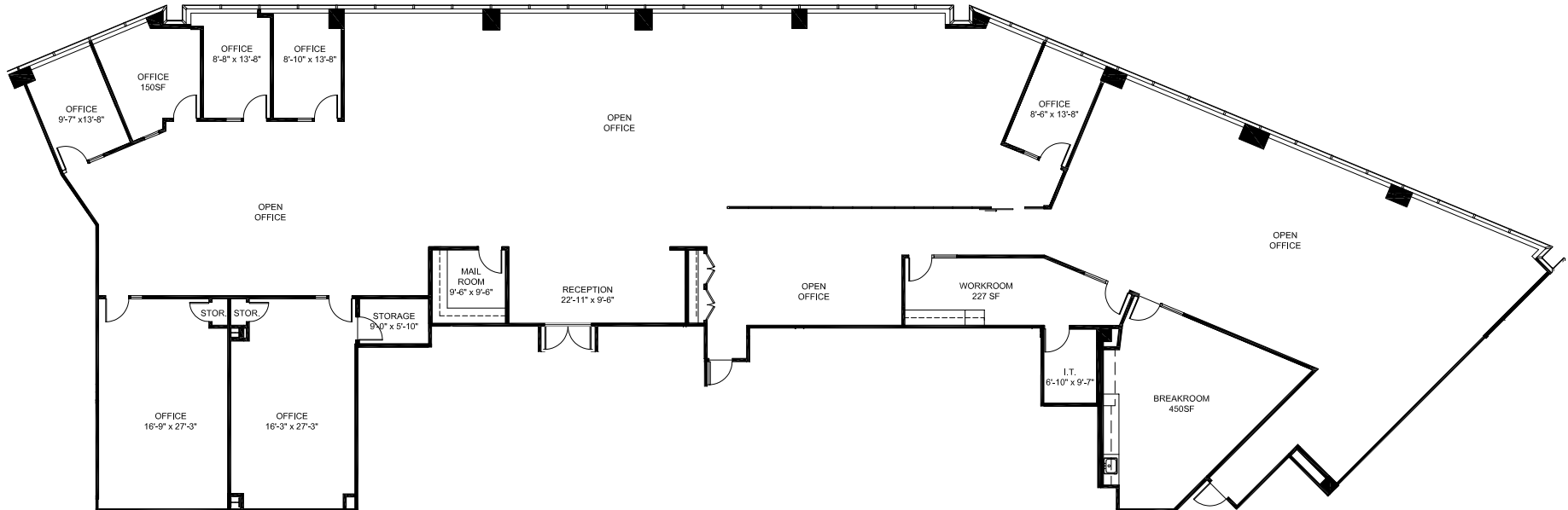
925.467.0905 | JEFF.MORGENSTERN@NMRK.COM | CA RE LICENSE #01275910

DAN WATSON EXECUTIVE VICE PRESIDENT

925.467.0903 | DAN.WATSON@NMRK.COM | CA RE LICENSE #01438710

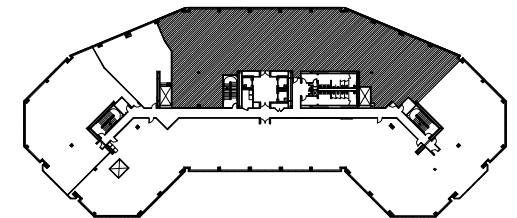
FLOOR PLANS

Available Space



**SYCAMORE
PLAZA 6701**

STE 200 / ± 10,172 RSF



KEY PLAN

EXCLUSIVE AGENTS

JEFF MORGENSTERN SENIOR MANAGING DIRECTOR

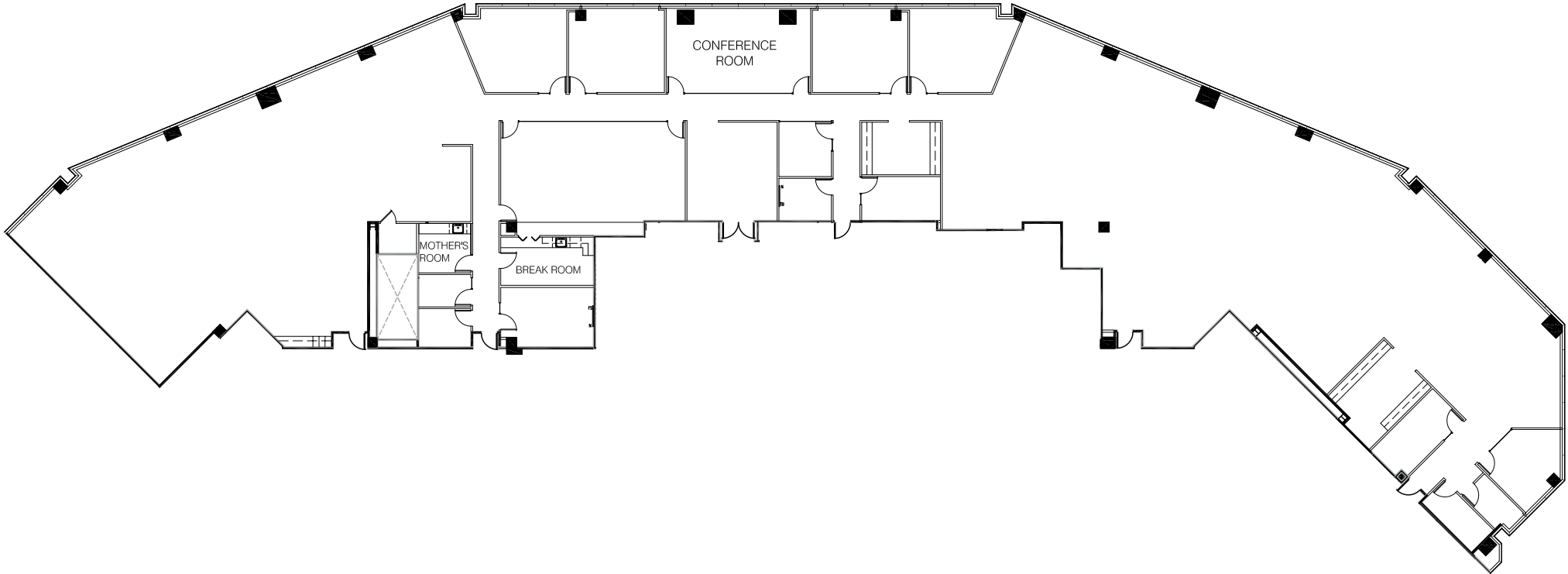
925.467.0905 | JEFF.MORGENSTERN@NMRK.COM | CA RE LICENSE #01275910

DAN WATSON EXECUTIVE VICE PRESIDENT

925.467.0903 | DAN.WATSON@NMRK.COM | CA RE LICENSE #01438710

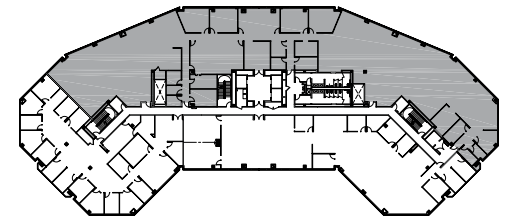
FLOOR PLANS

Available Space



**SYCAMORE
PLAZA 6801**

STE 200 / ± 16,699 RSF



EXCLUSIVE AGENTS

JEFF MORGENSTERN SENIOR MANAGING DIRECTOR

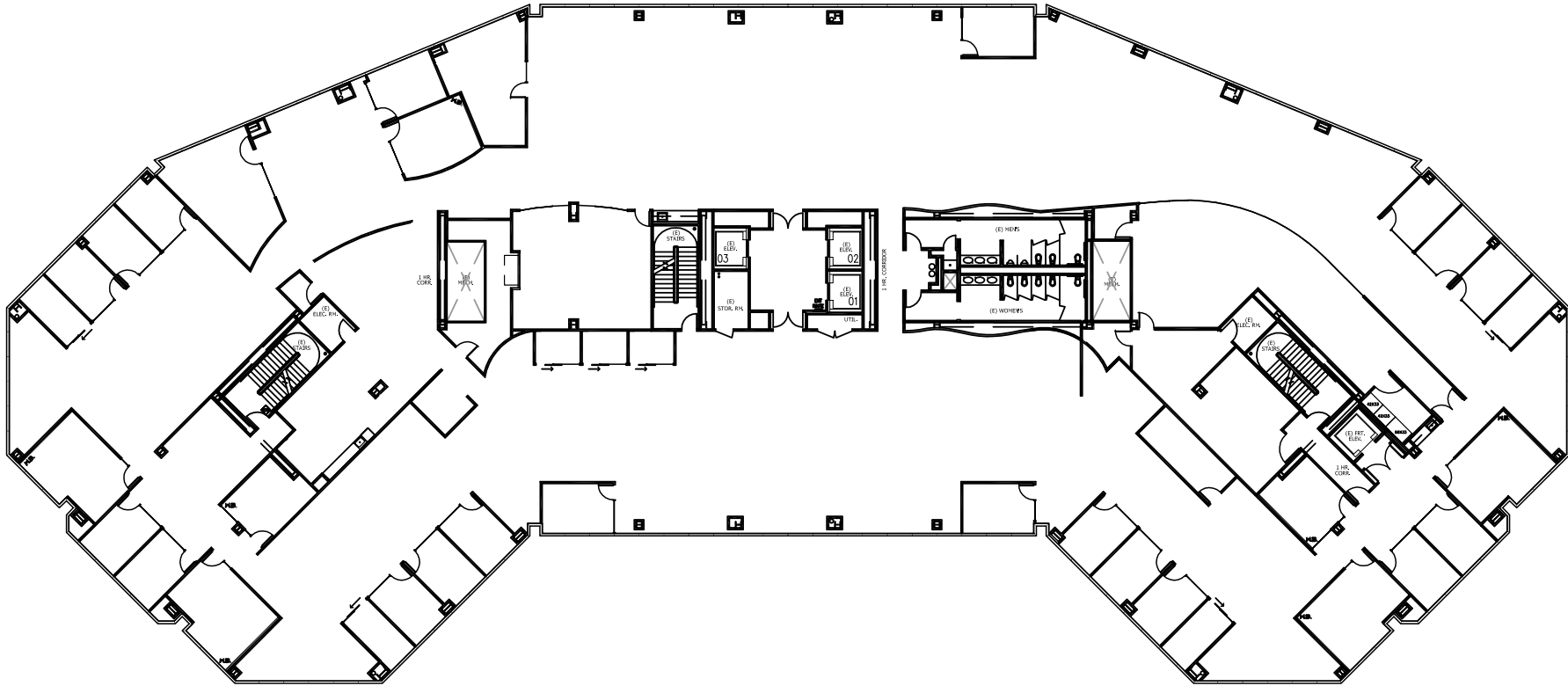
925.467.0905 | JEFF.MORGENSTERN@NMRK.COM | CA RE LICENSE #01275910

DAN WATSON EXECUTIVE VICE PRESIDENT

925.467.0903 | DAN.WATSON@NMRK.COM | CA RE LICENSE #01438710

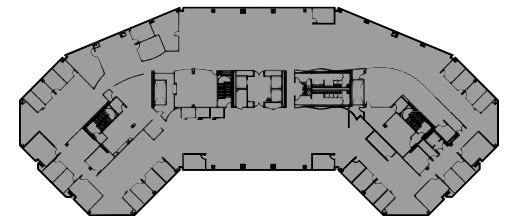
FLOOR PLANS

Available Space



**SYCAMORE
PLAZA 6801**

STE 400 / ±32,848 RSF



EXCLUSIVE AGENTS

JEFF MORGENSTERN SENIOR MANAGING DIRECTOR

925.467.0905 | JEFF.MORGENSTERN@NMRK.COM | CA RE LICENSE #01275910

DAN WATSON EXECUTIVE VICE PRESIDENT

925.467.0903 | DAN.WATSON@NMRK.COM | CA RE LICENSE #01438710



KOLL CENTER PARKWAY

PLEASANTON, CA

NEWMARK

KGIP Principal®



The distributor of this communication is performing acts for which a real estate license is required. The information contained herein has been obtained from sources deemed reliable but has not been verified and no guarantee, warranty or representation, either express or implied, is made with respect to such information. Terms of sale or lease and availability are subject to change or withdrawal without notice.