

SUITES 102/102/103

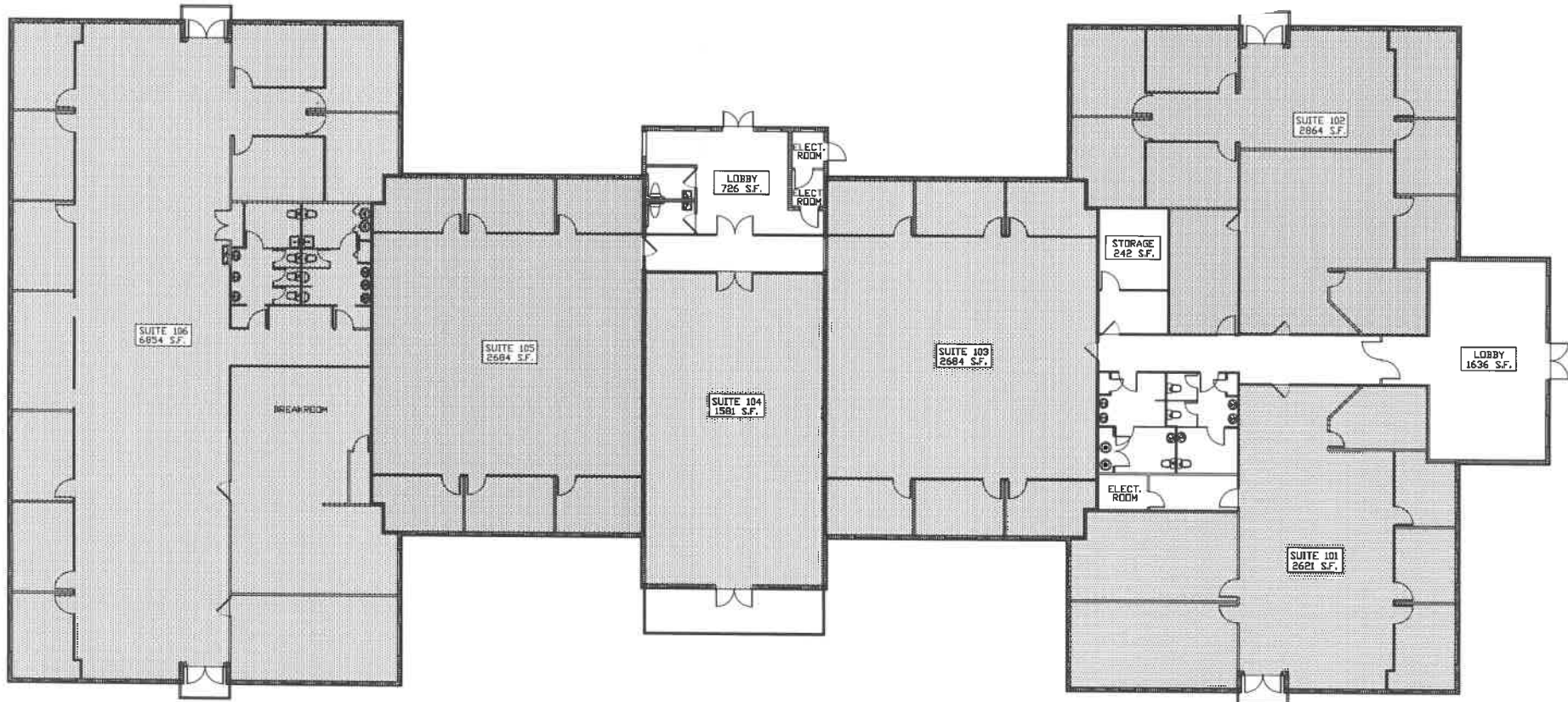
SUITE NO.	LEASABLE
101	3224 sf
102	3523 sf
103	3301 sf
COMMON (23%)	-
GROSS LEASEABLE	10050 sf

SUITES 104/105

SUITE NO.	LEASABLE
104	1850 sf
105	3142 sf
COMMON (17%)	-
GROSS LEASEABLE	4991 sf

SUITES 106

SUITE NO.	LEASABLE
106	6854 sf
COMMON (0%)	-
GROSS LEASEABLE	6854 sf




JAMES DAINE, INC.
 ARCHITECTURAL
 AND INTERIOR
 DESIGNERS
 REGISTERED
 PROFESSIONAL
 ARCHITECTS
 JAMES DAINE, INC.
 P.O. BOX 1000
 DELRAY BEACH, FLORIDA 33484
 CONSULTANT
 JEFFREY H. HAYES, P.E.
 P.E. 10000
 2014 BROWARD COUNTY
 WEST PALM BEACH, FLORIDA 33411
 561-696-0000
 THESE PLANS ARE AN
 INSTRUMENT OF SERVICE.
 UNAUTHORIZED USE
 OR REPRODUCTION OF
 THESE ELECTRONIC DRAWINGS
 WITHOUT THE WRITTEN
 PERMISSION OF JAMES DAINE, INC.
 2014 BROWARD COUNTY
 DELAY BEACH, FLORIDA 33484

OFFICE RENOVATION
14565 SIMS ROAD
DELRAY BEACH, FLORIDA 33484

REVISIONS:



DATE: _____ DRAWN BY: _____
 CHECKED BY: _____

SHEET NO. 9