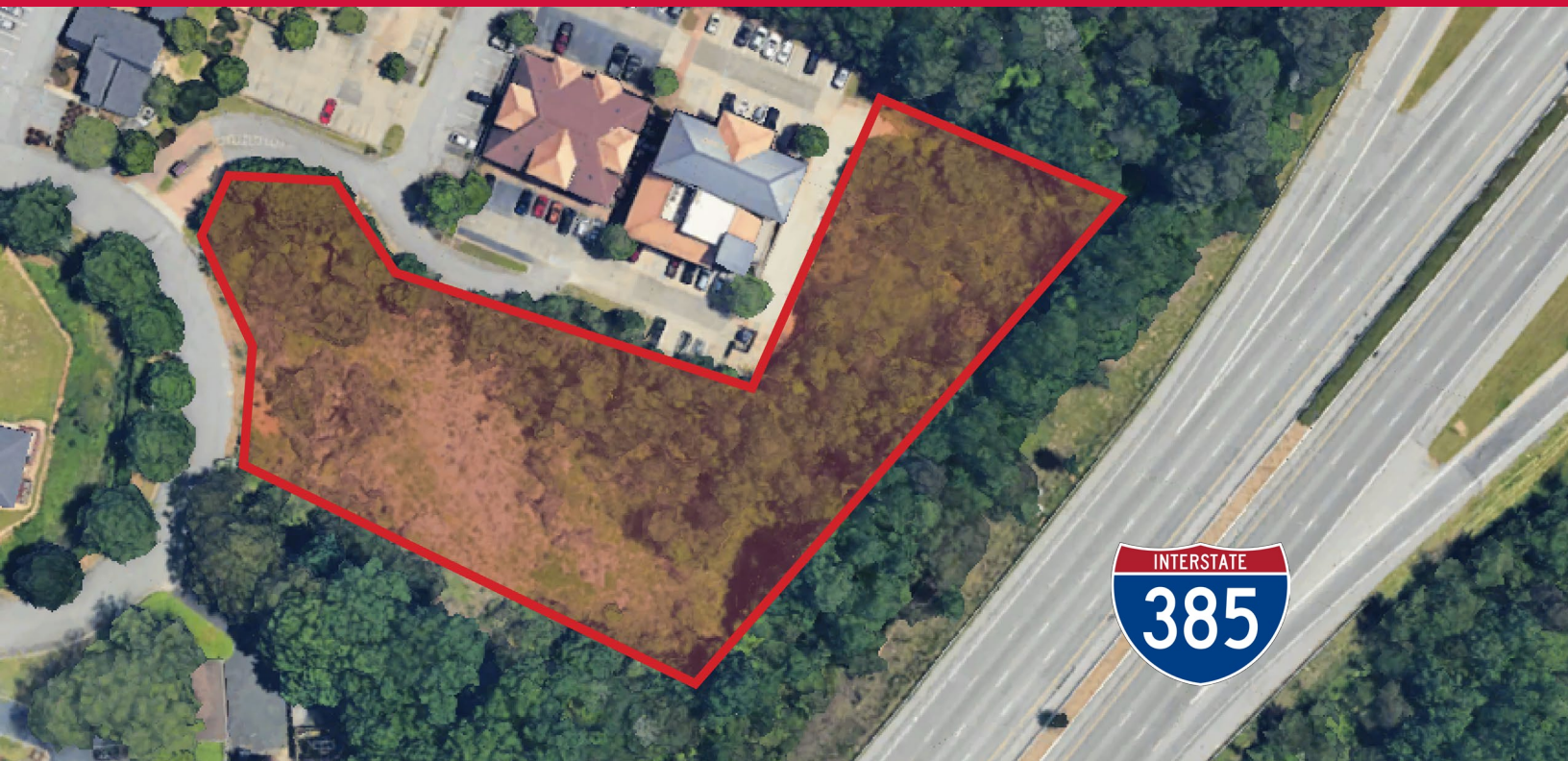


# Creekside Professional Village

68 Pointe Circle

Greenville, South Carolina



## Office Land For Sale

*Ability to Construct  $\pm 4,238$  SF -  $\pm 20,800$  SF*

Total of  $\pm 2.34$  AC

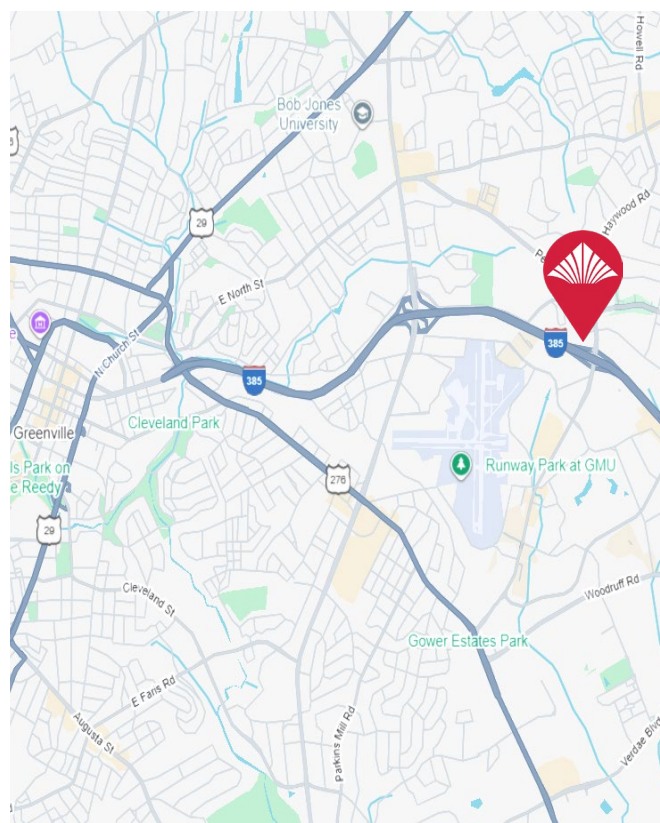
Ability to construct  $\pm 4,238$  SF -  $\pm 20,800$  SF

All utilities available

Zoned BG; City of Greenville

Ideal for Class A office development

**SALES PRICE: ~~\$333,300~~ \$215,000**



1545 Sumter Street, Columbia, SC 29201 T 803.779.8600 [www.wilsonkibler.com](http://www.wilsonkibler.com)

Brooks Owings

803.255.8642 [brooks.owings@wilsonkibler.com](mailto:brooks.owings@wilsonkibler.com)

The information contained herein has been obtained from sources we believe to be reliable; however, Wilson Kibler has not conducted any investigation regarding these matters and makes no warranty or representation whatsoever regarding the accuracy or completeness of the information provided. Independently owned and operated.



# Creekside Professional Village

68 Pointe Circle  
Greenville, South Carolina



## Office Development | 68 Pointe Circle



### Site Development Summary

Building	Use	Pad Dimension	Square Footage
A	Office	65'x80'	10,400 SF (2-Story)
B	Office	65'x80'	10,400 SF (2-Story)
C	Office	40'x80'	6,400 SF (2-Story)

Concept 1.0

05.14.2018



SW SEAMONWHITESIDE

1545 Sumter Street, Columbia, SC 29201 T 803.779.8600 [www.wilsonkibler.com](http://www.wilsonkibler.com)

Brooks Owings  
803.255.8642 [brooks.owings@wilsonkibler.com](mailto:brooks.owings@wilsonkibler.com)

The information contained herein has been obtained from sources we believe to be reliable; however, Wilson Kibler has not conducted any investigation regarding these matters and makes no warranty or representation whatsoever regarding the accuracy or completeness of the information provided. Independently owned and operated.