



520 + 500 DENNIS RD

OFFICE AND WAREHOUSE INDUSTRIAL FACILITY FOR SALE OR LEASE
WEATHERFORD, TX | 12,735 SF ON 10 ACRES AVAILABLE

THOMAS GRAFTON
TGRAFTON@HPITX.COM
512-788-1087

GARRISON LACKEY
GLACKEY@HPITX.COM
956-793-9657

500 DENNIS RD



PROPERTY HIGHLIGHTS

TOTAL SF: 5,808 SF

1,008 SF Office Space

4,800 SF Warehouse

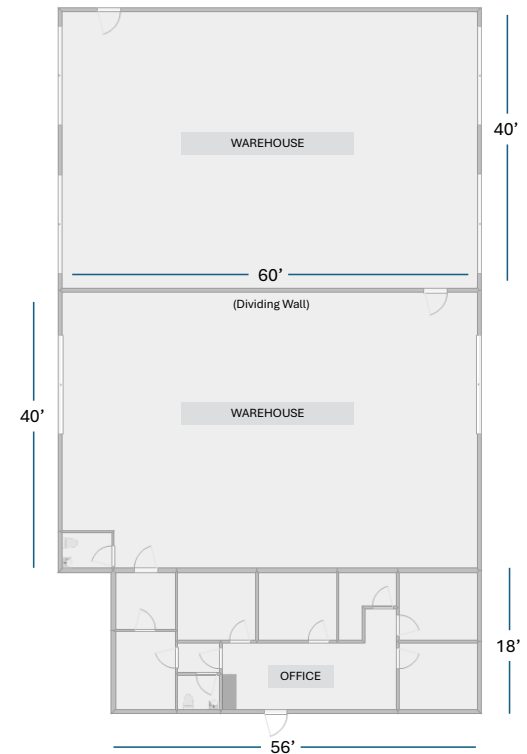
5,808 SF Total

4 - 14'x14' Grade Doors

2 - 14'x12' Grade Doors

Two (2) Fully Insulated Warehouse Jib Cranes

520 Dennis Rd, Weatherford, TX



THOMAS GRAFTON
TGRAFTON@HPITX.COM
512-788-1087

GARRISON LACKEY
GLACKEY@HPITX.COM
956-793-9657



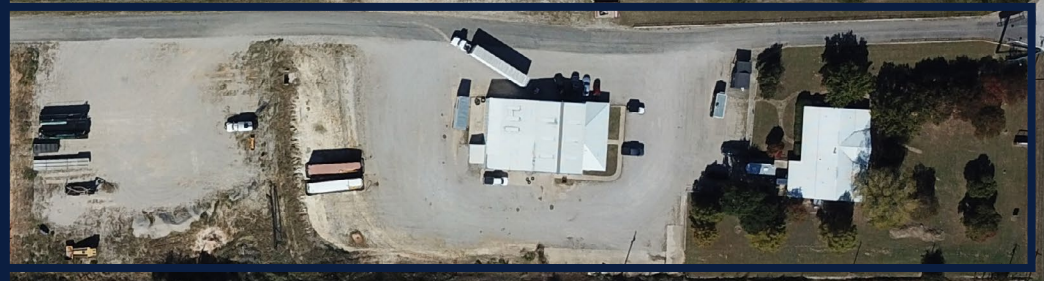
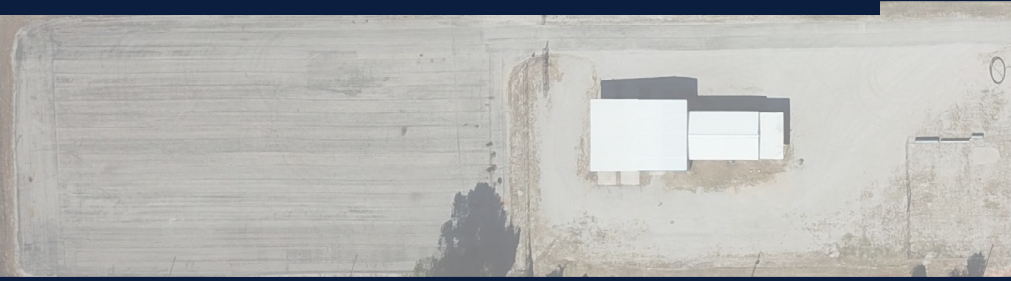
500 DENNIS RD



THOMAS GRAFTON
TGRAFTON@HPITX.COM
512-788-1087

GARRISON LACKEY
GLACKEY@HPITX.COM
956-793-9657

520 DENNIS RD



PROPERTY HIGHLIGHTS

5 ACRES TOTAL

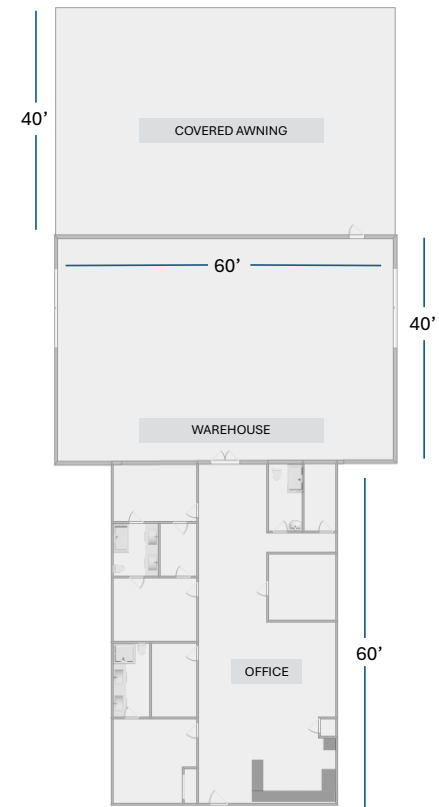
2,400 SF Office Space

2,400 SF Warehouse

4,800 SF Total

2,400 SF Covered Awning

2 – 14'x14' Grade Doors



THOMAS GRAFTON
TGRAFTON@HPITX.COM
512-788-1087

GARRISON LACKEY
GLACKEY@HPITX.COM
956-793-9657



520 DENNIS RD



THOMAS GRAFTON
TGRAFTON@HPITX.COM
512-788-1087

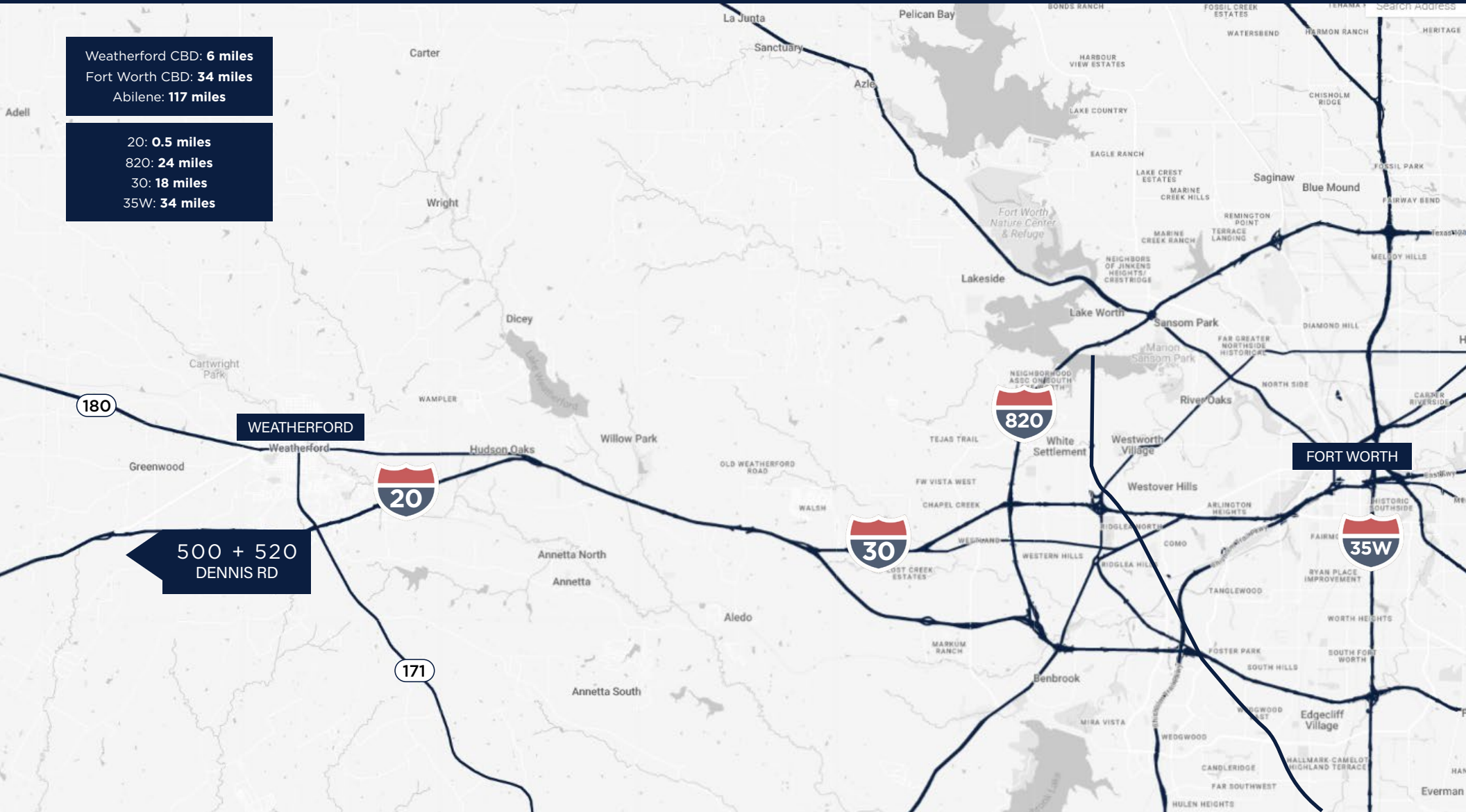
GARRISON LACKEY
GLACKEY@HPITX.COM
956-793-9657

LOCATION

500 + 520 DENNIS RD

Weatherford CBD: **6 miles**
Fort Worth CBD: **34 miles**
Abilene: **117 miles**

20: **0.5 miles**
820: **24 miles**
30: **18 miles**
35W: **34 miles**



THOMAS GRAFTON
TGRAFTON@HPITX.COM
512-788-1087

GARRISON LACKEY
GLACKEY@HPITX.COM
956-793-9657