

RETAIL & OFFICE SPACE AVAILABLE

CITY PARK PLAZA

1720 WEST MULBERRY STREET
FORT COLLINS, CO 80521



High traffic counts & a large on-street monument sign. 1 small 600 sf space & 1 larger 1,800 sf (incl. reception area, 6-7 offices, conference room, large open area for workstations, kitchen & 2 restrooms) left. Great tenant draws including Lupita's Mexican Restaurant & excellent street visibility.

- > Great location near City Park, Sheldon Lake and City Park Golf Course
- > Close to CSU and Old Town Fort Collins
- > Below market rent
- > Monument signage on W. Mulberry St.
- > High traffic counts

No warranty or representation, express or implied, is made to the accuracy or completeness of the information contained herein, and same is submitted subject to errors, omissions, change of price, rental or other conditions, withdrawal without notice, and to any special listing conditions imposed by the property owner(s). As applicable, we make no representation as to the condition of the property (or properties) in question.

Doberstein Lemburg
Commercial, Inc.

AVAILABLE

600 SF

\$15.00 PSF

+ NNN (\$6.25 PSF)

1,800 SF

\$10.50 PSF

+ NNN (\$6.25 PSF)

Available Now

RANDY MARSHALL

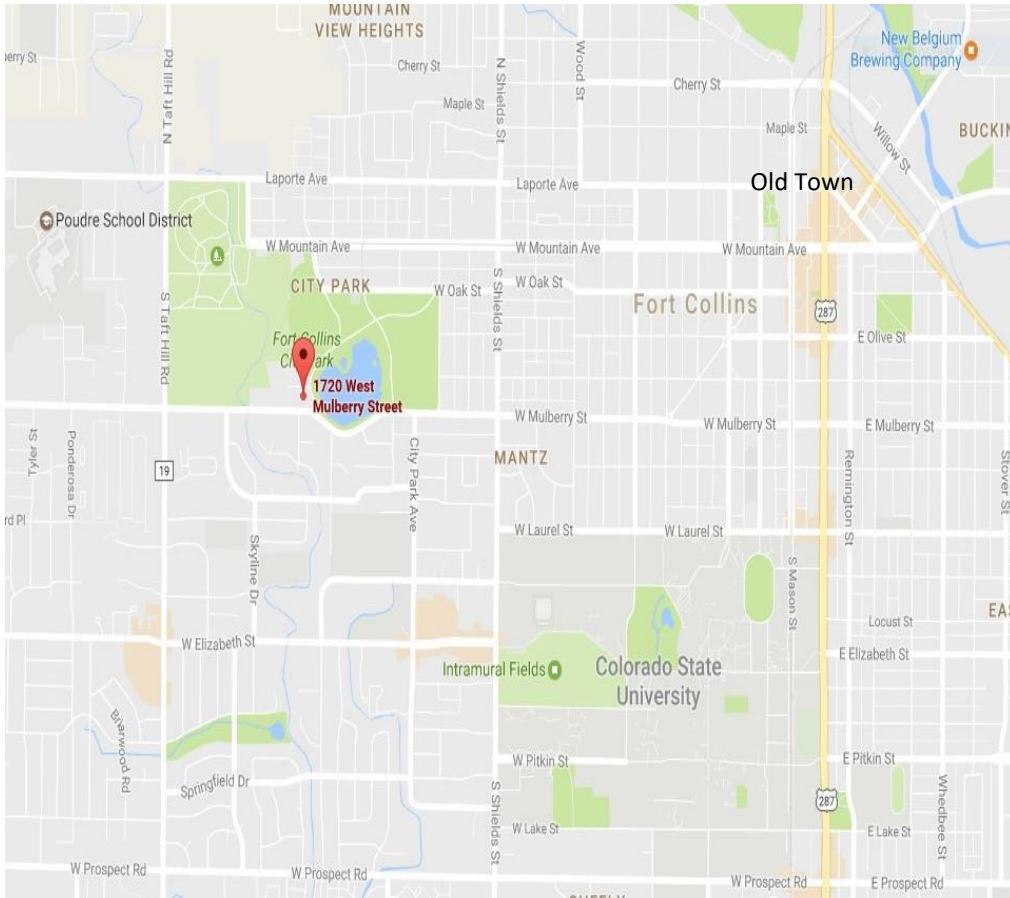
Cell: (970) 691-7446

Office: (970) 221-1965 x3

E-mail: randy@dlcco.com

1401 Riverside Avenue
Fort Collins, CO 80524

Doberstein
Lemburg
Commercial, Inc.



**Doberstein Lemburg
Commercial, Inc.**

AVAILABLE

600 SF

\$15.00 PSF

+ NNN (\$6.25 PSF)

1,800 SF

\$10.50 PSF

+ NNN (\$6.25 PSF)

Available Now

RANDY MARSHALL

Cell: (970) 691-7446

Office: (970) 221-1965 x 3

E-mail: randy@dlcco.com

**1401 Riverside Avenue
Fort Collins, CO 80524**

**Doberstein
Lemburg
Commercial, Inc.**

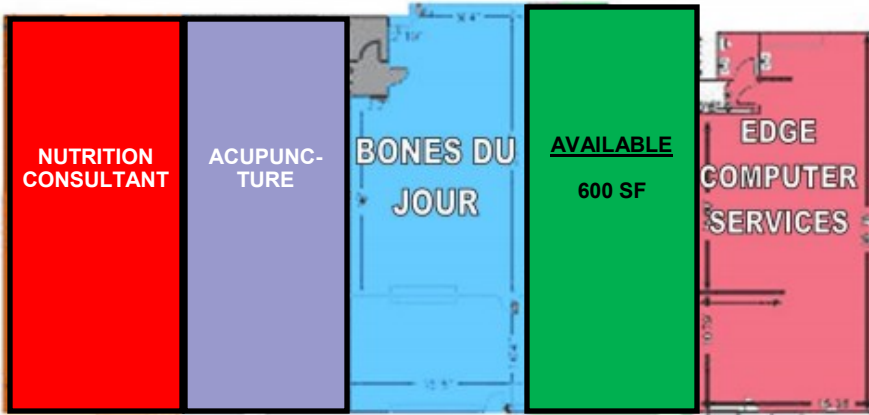


INTERIOR PHOTO

CITY PARK PLAZA

1720 W. MULBERRY STREET

FORT COLLINS, CO 80521



SITE PLAN & AVAILABILITY



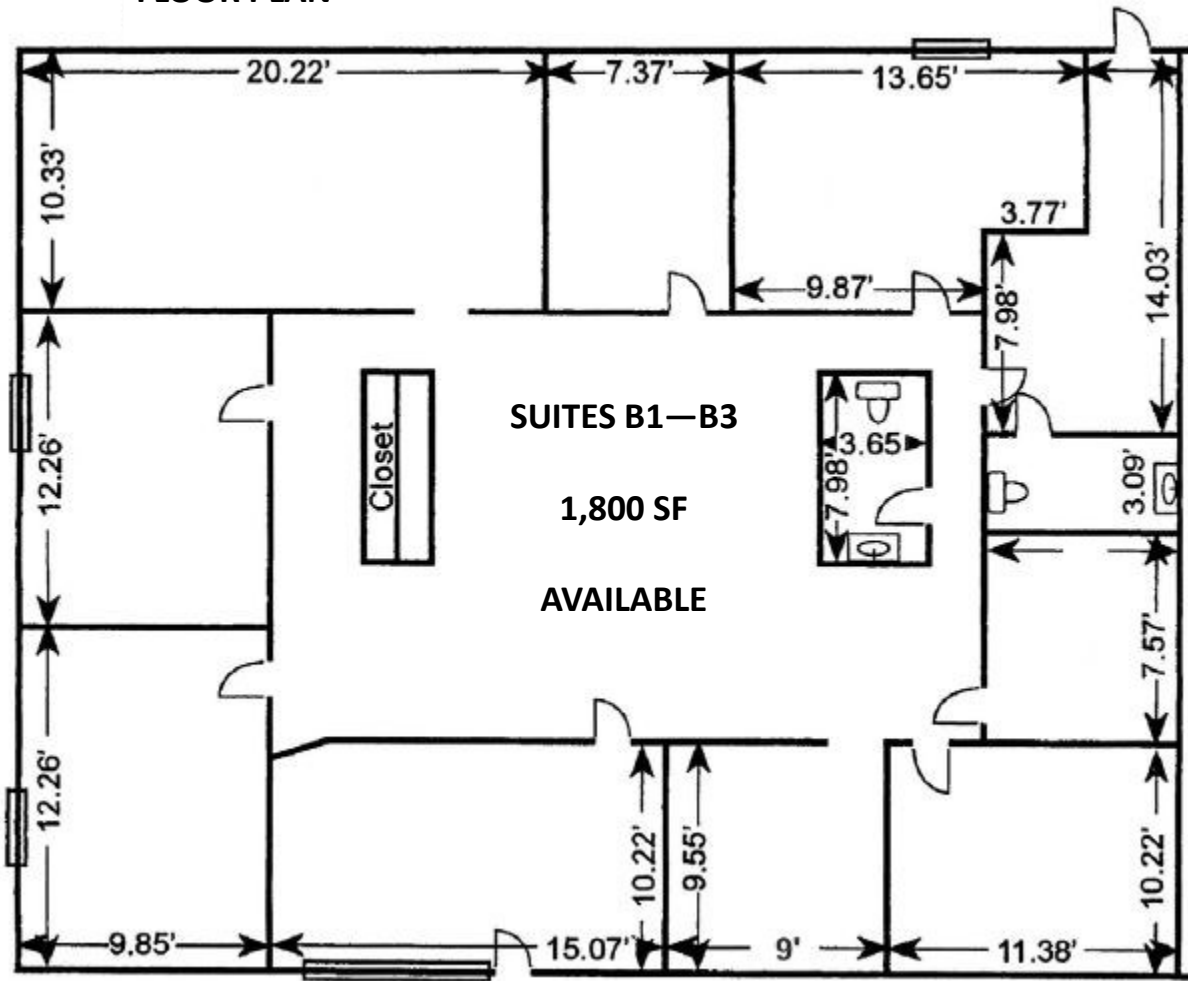
Available Suites

600 SF \$1,062/Month

1,800 SF \$2,512/Month



FLOOR PLAN



INTERIOR PHOTOS

