



GOLD AND COMPANY, LLC

WWW.GOLDCOMMERCIAL.NET

Commercial Real Estate in the Baltimore Metropolitan Area



600 S. Pulaski St. Baltimore, MD 21223

Gold And Company, LLC

For More Information:

Jim Chivers
443.928.7522 cell
jim@goldcommercial.net

Will McCullough
410.292.2985 cell
will@goldcommercial.net

www.goldcommercial.net

- +/- 35,000 sf Building Available FOR SALE
- Redevelopment / Value Add
- I-1—Industrial Baltimore City
- 1.34 Acres
- Outside Storage / Parking Area
- Drive-In Access
- Enterprise Zone Focus Area
- Ideal for Redevelopment or Owner-User Facility
- Contact For More Information

This property offering is subject to change without notice. All information is deemed reliable but not guaranteed.

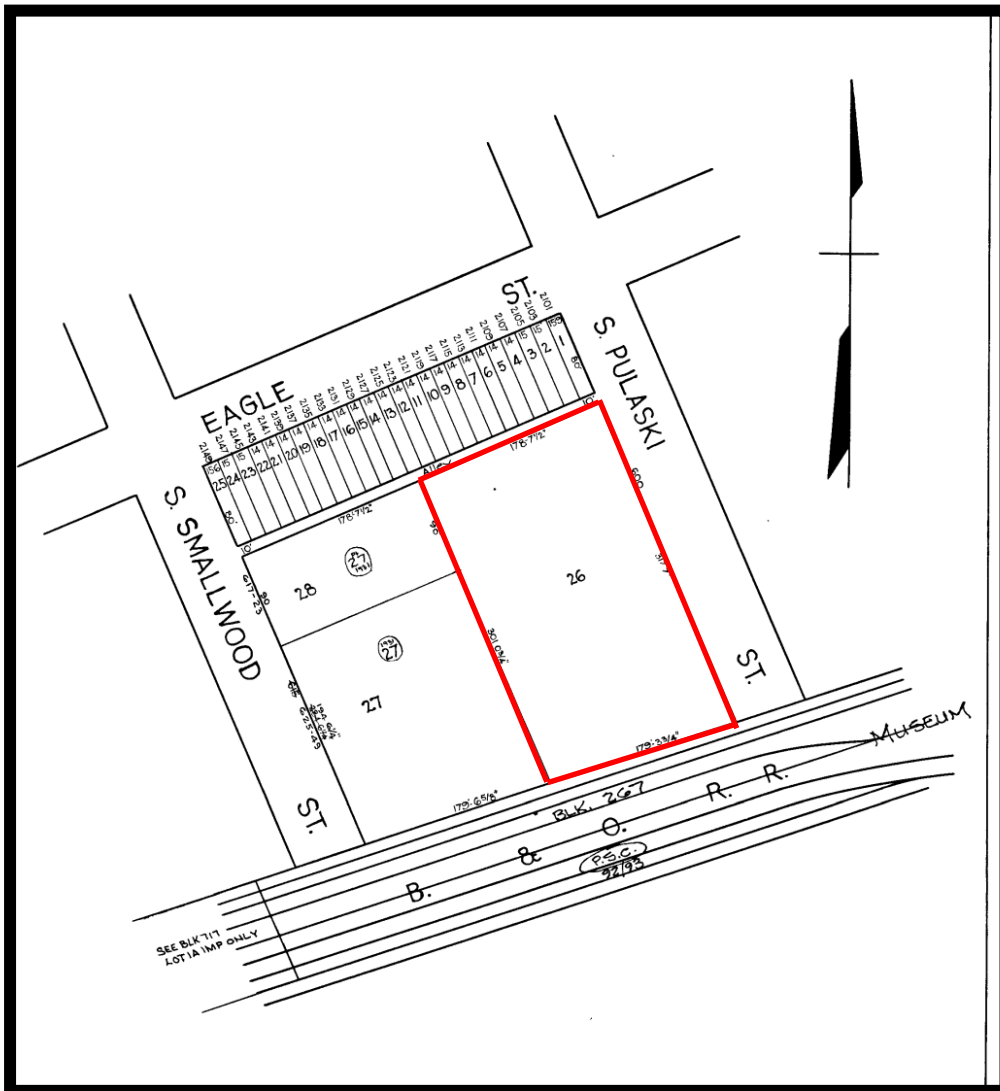


Gold And Company

Commercial Real Estate in the Baltimore Metropolitan Area

600 S. Pulaski St. Baltimore, MD 21223

Block Map



Jim Chivers / Will McCullough
Gold And Company, LLC
5601 Newbury St.
Baltimore, MD 21209

410.578.1300 (Office)

www.goldcommercial.net

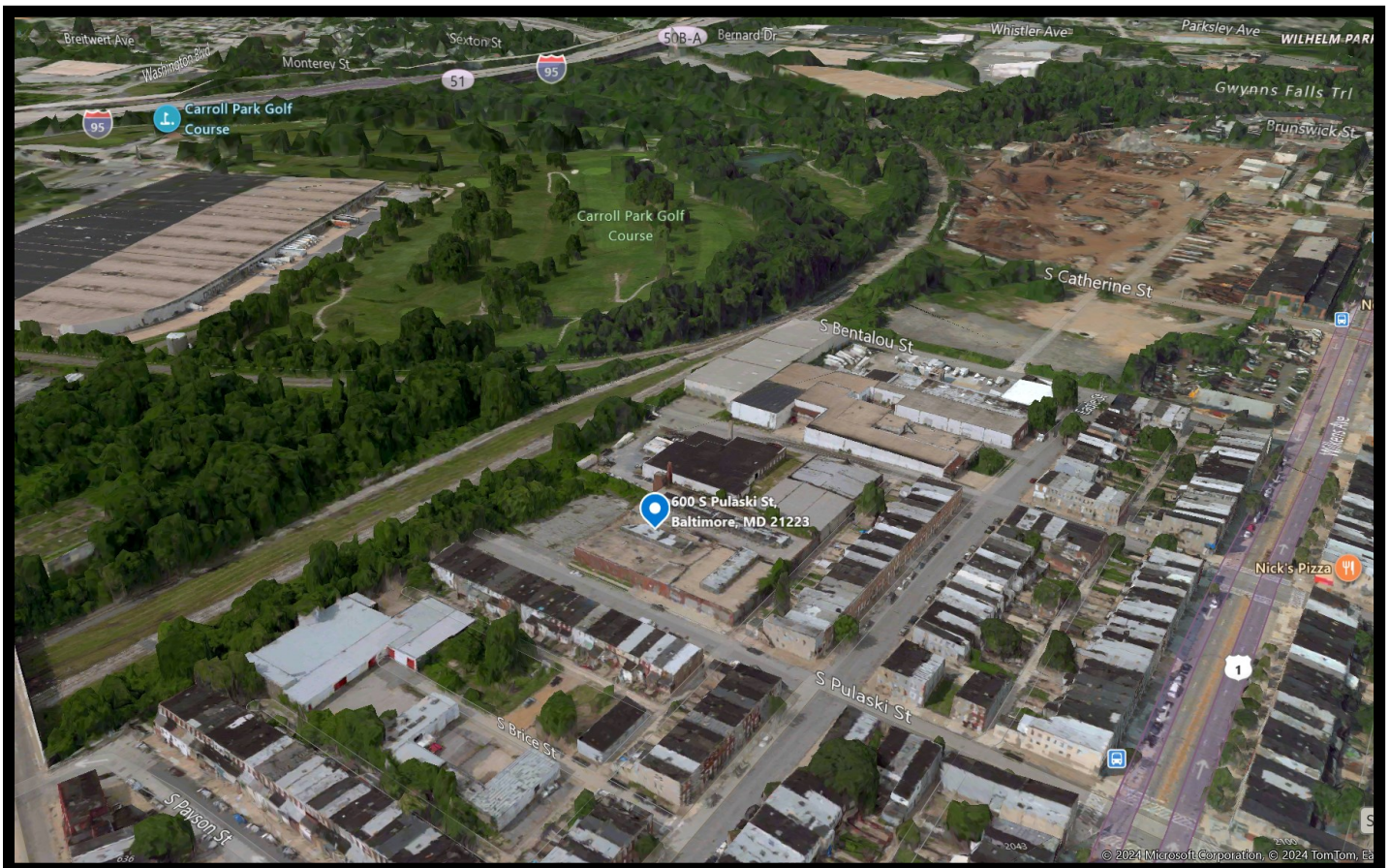


Gold And Company

Commercial Real Estate in the Baltimore Metropolitan Area

600 S. Pulaski St. Baltimore, MD 21223

Aerial



Jim Chivers / Will McCullough
Gold And Company, LLC
5601 Newbury St.
Baltimore, MD 21209

410.578.1300 (Office)

www.goldcommercial.net