

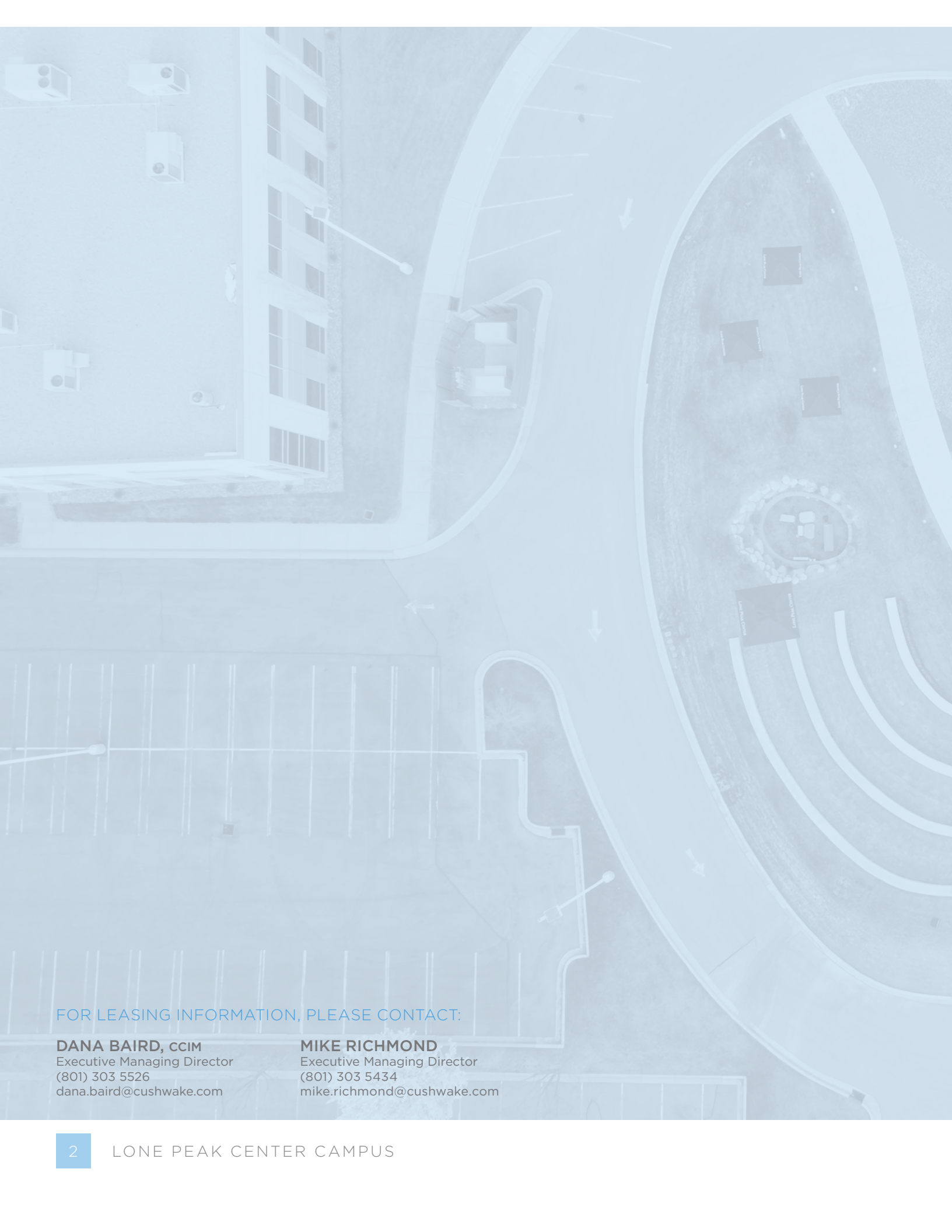
# LONE PEAK CENTER CAMPUS



11781 LONE PEAK PARKWAY | SALT LAKE CITY, UTAH



MAIER SIEBEL BABER



FOR LEASING INFORMATION, PLEASE CONTACT:

**DANA BAIRD, CCIM**  
Executive Managing Director  
(801) 303 5526  
dana.baird@cushwake.com

**MIKE RICHMOND**  
Executive Managing Director  
(801) 303 5434  
mike.richmond@cushwake.com

# LONE PEAK CENTER CAMPUS

Lone Peak Corporate Center is conveniently located within the Southern Salt Lake Valley, providing easy access to/from Salt Lake City and Provo areas. Highly visible, easily accessible from Interstate 15 via two prominent exits. Situated minutes north of the I-15/Bangerter Highway interchange and accessible to nearby Frontrunner and TRAX stops via campus-provided shuttle, providing efficient connectivity to the Salt Lake City International Airport, the CBD, recreation areas and Utah County to the South.

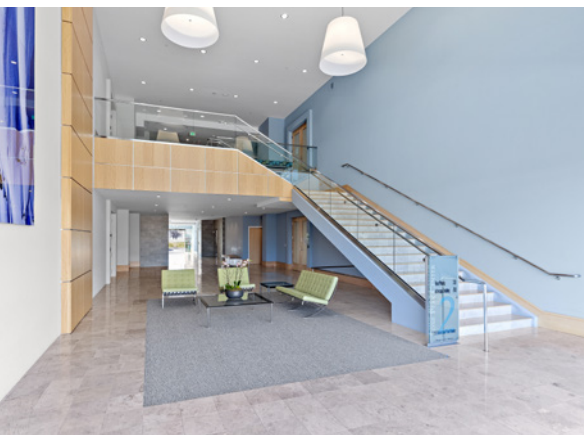
## PROPERTY FEATURES:

- Available Suites Range From 6,000 RSF - 63,000+ RSF
- Full Floor Opportunity
- \$28.50 - \$29.50 / SF, Full Service
- 5/1,000 parking ratio available
- Building Exterior Signage Available to Qualified Tenants
- Superior Access to I-15 Via 114<sup>th</sup> and 123<sup>rd</sup> South
- Multimodal Shuttle Service to and from TRAX and FrontRunner

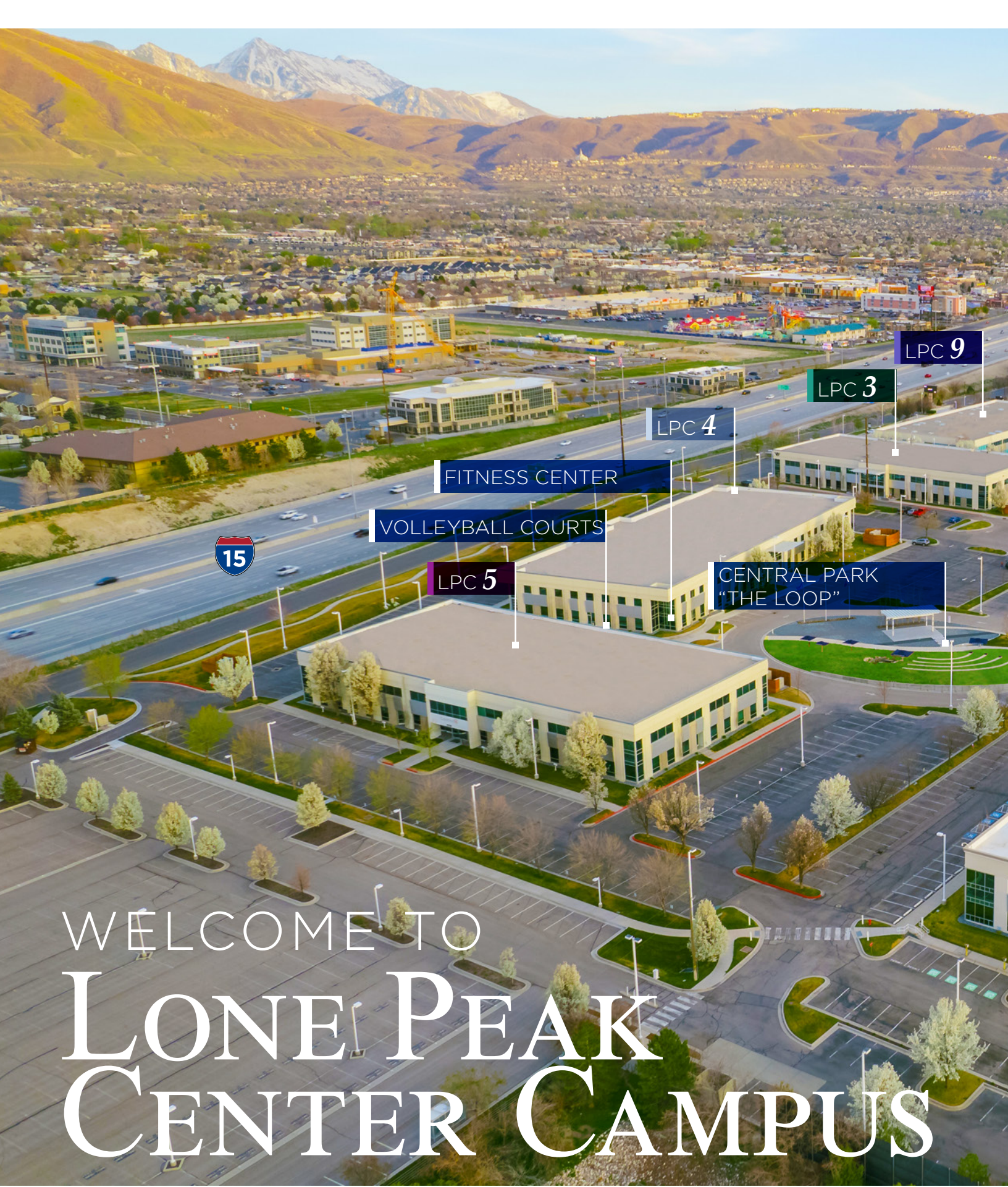




LONE PEAK 8







LPC 9

LPC 3

LPC 4

FITNESS CENTER

VOLLEYBALL COURTS

LPC 5

CENTRAL PARK  
"THE LOOP"



# WELCOME TO LONE PEAK CENTER CAMPUS



LPC 8

LPC 7

LPC 6

SHUTTLE SERVICE

LPC 2

# MORE THAN JUST A DESK



Fitness Center with Lockers & Shower located in Building 4, additional Showers and Lockers located in Building 8



The Hub



Volleyball and Pickleball Courts



On-Campus E-Charging Stations and Weekly Food Trucks



# AMENITIES

- On-Campus E-Charging Stations
- Newly Remodeled Interior Lobbies
- New Central 'Park' with an Outdoor Assembly and Eating Area
- High Density Infrastructure
- Volleyball and Pickleball Courts
- Fitness Center with Lockers and Showers



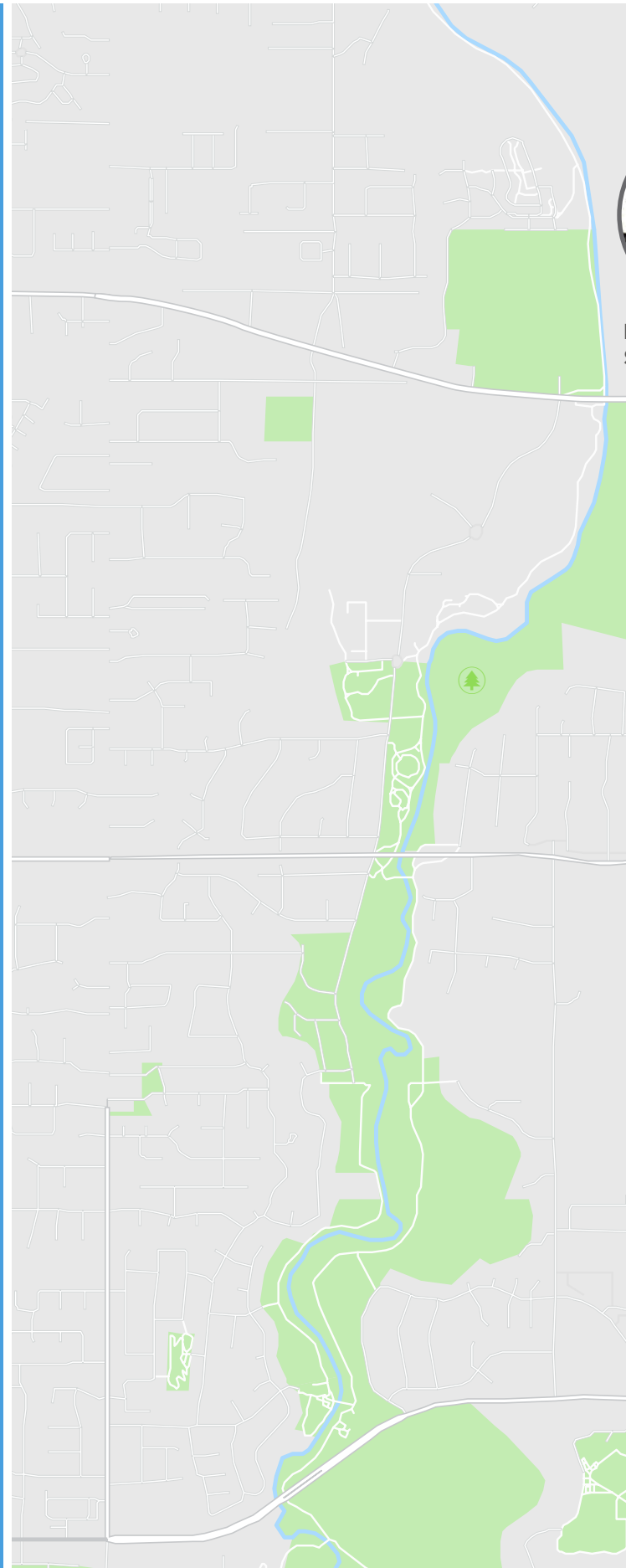
# SHUTTLE SERVICE & LOCAL AREA

Complimentary shuttle service is available to all **Lone Peak Center Campus** tenants. This services provides regular service from the Campus to the South Jordan Front Runner Station and the Crescent View Trax Station. Just look for the blue shuttle.

With The Shops at South Town to the North, and Draper Peaks Shopping Center to the South, **Lone Peak Center Campus** is located near several shopping, dining, and entertainment destinations. Mulligan's Golf Course, and the Living Planet Aquarium are also located in close proximity to the campus.



Lone Peak Center Campus Shuttle





FRONT RUNNER SOUTH JORDAN STATION

SOUTH TOWNE MARKETPLACE

THE SHOPS AT SOUTH TOWN

10600 SOUTH

FRONT RUNNER SOUTH



STATE STREET



TRAX CRESCENT VIEW STATION

1300 EAST

11400 SOUTH

LONE PEAK CENTER

LONE PEAK PARKWAY

11800 SOUTH

TRAX BLUE LINE

DRAPER PEAKS SHOPPING CENTER

12300 SOUTH



MAIER SIEBEL BABER

# LONE PEAK CENTER CAMPUS

**DANA BAIRD, CCIM**  
Executive Managing Director  
(801) 303 5526  
dana.baird@cushwake.com

**MIKE RICHMOND**  
Executive Managing Director  
(801) 303 5434  
mike.richmond@cushwake.com

Cushman & Wakefield Copyright 2022. No warranty or representation, express or implied, is made to the accuracy or completeness of the information contained herein, and same is submitted subject to errors, omissions, change of price, rental or other conditions, withdrawal without notice, and to any special listing conditions imposed by the property owner(s). As applicable, we make no representation as to the condition of the property (or properties) in question. (path: G:\UT\SLI\Shared\Apps\Gigas\1 - Projects\Richmond, Mike\1 - Flyers\LonePeakCenter\_2022Update)



**CUSHMAN &  
WAKEFIELD**