



PRESENTATION

# 40 NORTH CHRISTIAN





# ***THE IMPACT OF TECHNOLOGY***



## **Key Feature: Conference Rooms**



- 3 wall-mounted high-resolution projectors with 120" mounted screens, built-in wall controllers and speakers
- Flagship room with custom conference table wired for power, network, video and USB, 85" wall mount screen



# ***THE IMPACT OF TECHNOLOGY***

**Key Feature: Plug and Play Network Connectivity**



- 2-4 Cat5e jacks per office
- 10 Gb multimode fiber interconnects on each floor
- Comcast Enterprise fiber WAN
- Cisco mesh Wireless Access Points throughout office space



# THE IMPACT OF TECHNOLOGY

## Key Feature: Security



- Badge-based door access control
- Remote unlock for lobby and garage
- PA System interconnected between 3 floors

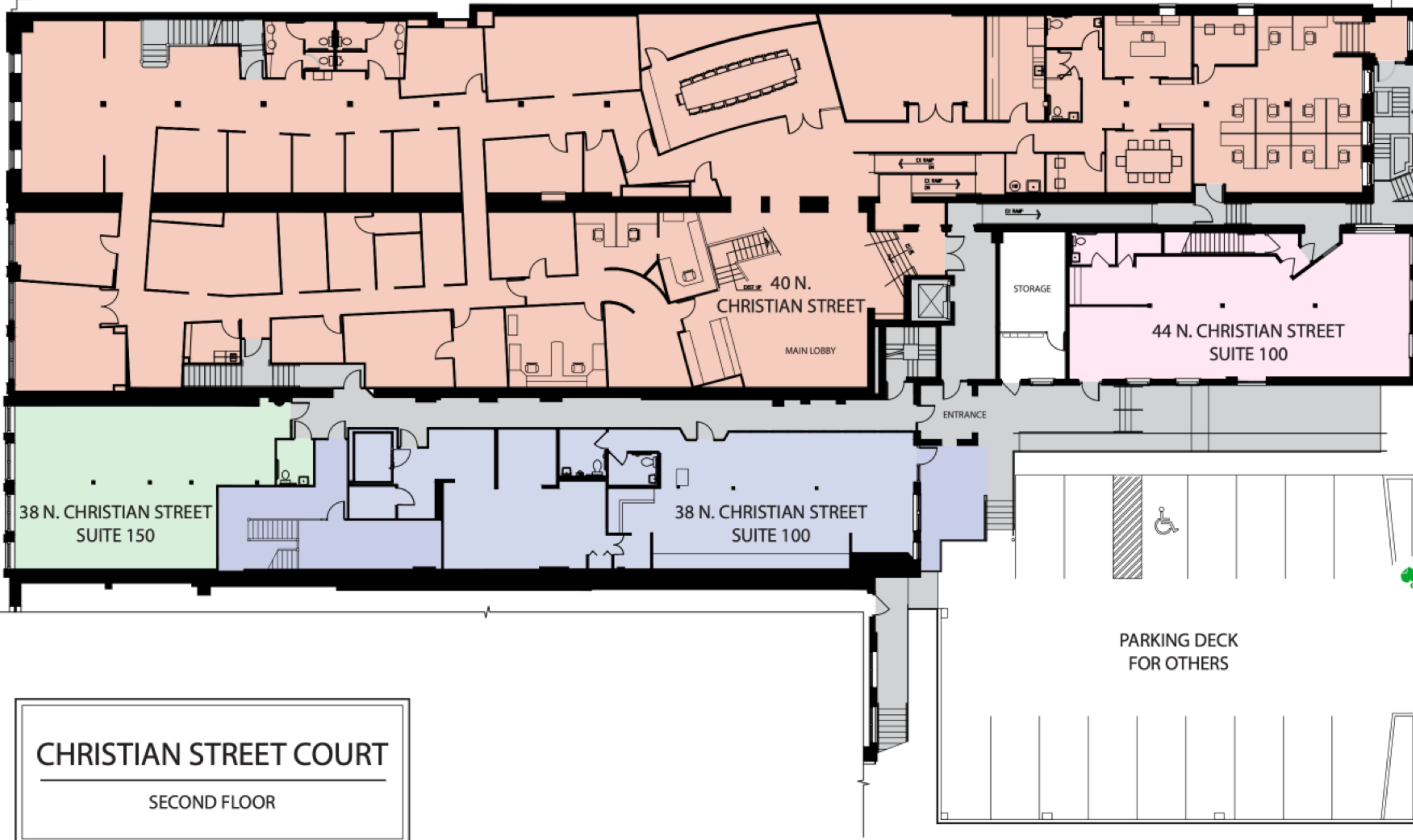


# ○ ○ ○ ○ **THE IMPACT OF TECHNOLOGY**

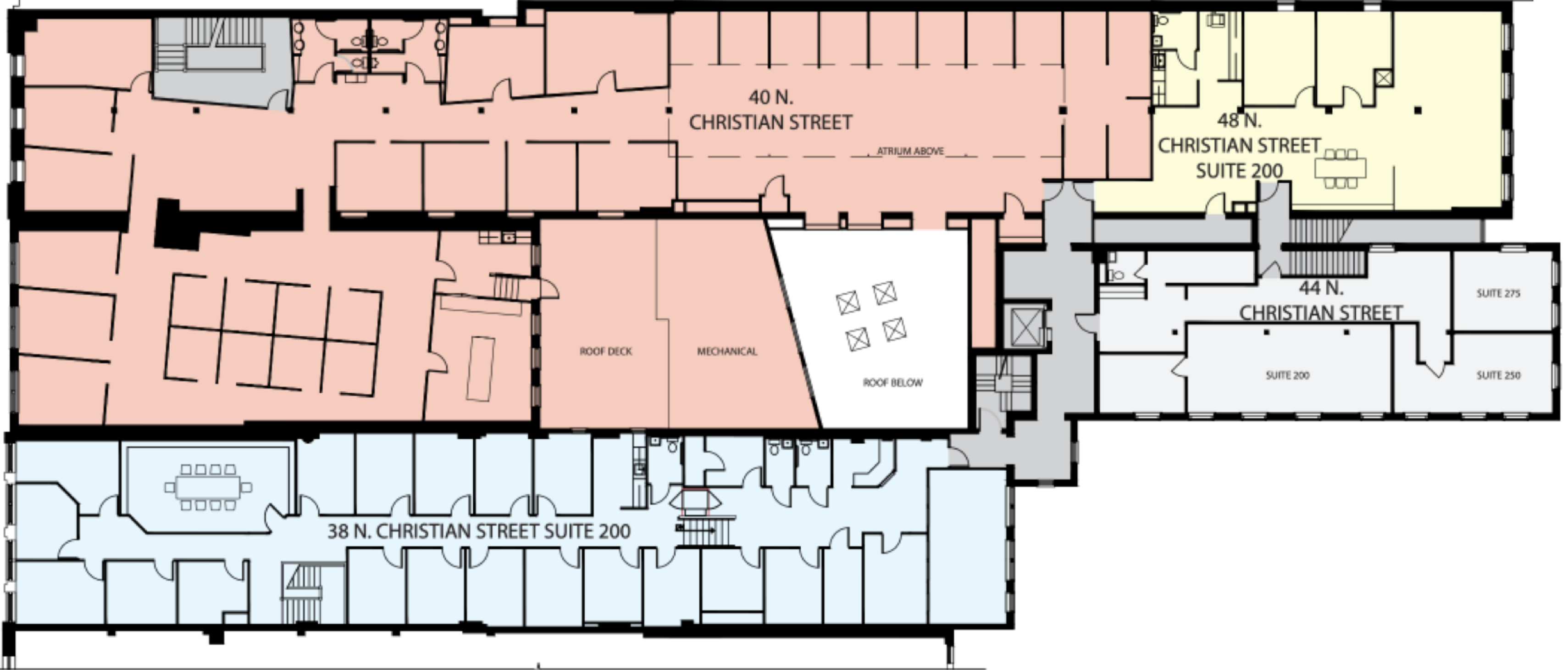
## **Key Features: Advanced Technology**

- Natural gas generator for power backup
- FM200 fire suppression
- Dedicated, secured IT office and adjacent temperature controlled server room

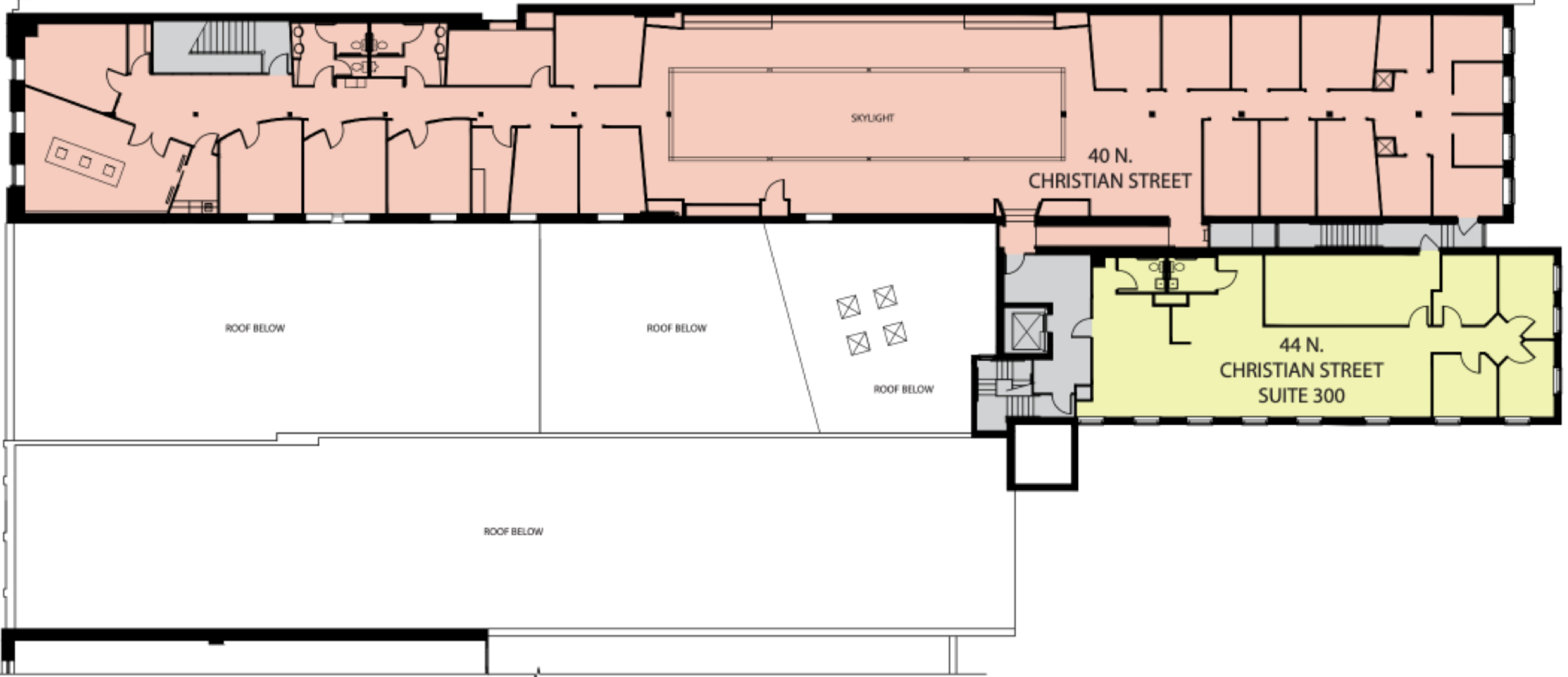




**CHRISTIAN STREET COURT**  
SECOND FLOOR



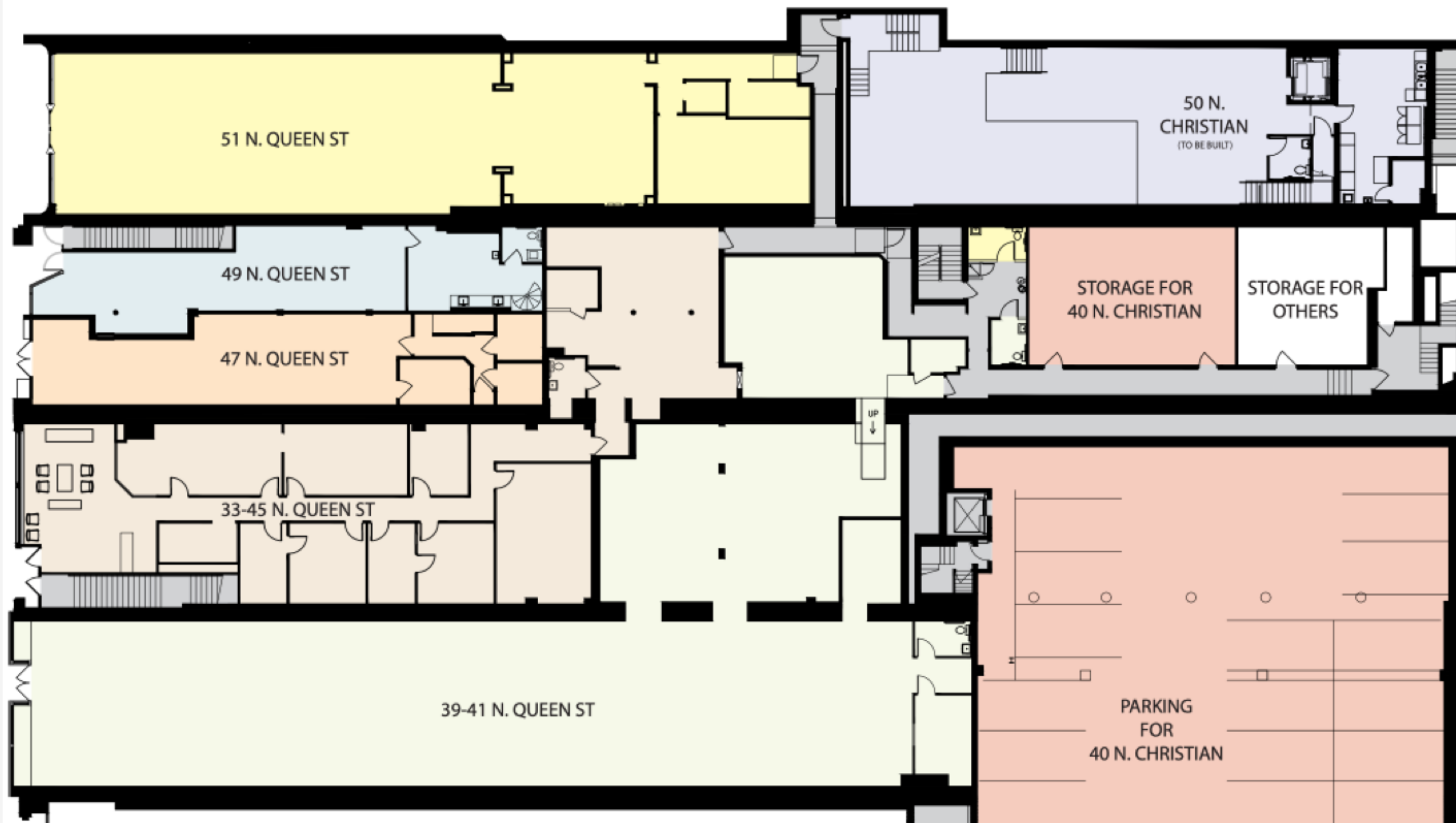
**CHRISTIAN STREET COURT**  
THIRD FLOOR



**CHRISTIAN STREET COURT**

FOURTH FLOOR





**CHRISTIAN STREET COURT**  
FIRST FLOOR (QUEEN STREET LEVEL)



---

**THANK  
YOU**

