

R.E. Longino – Tree Farm

Overview

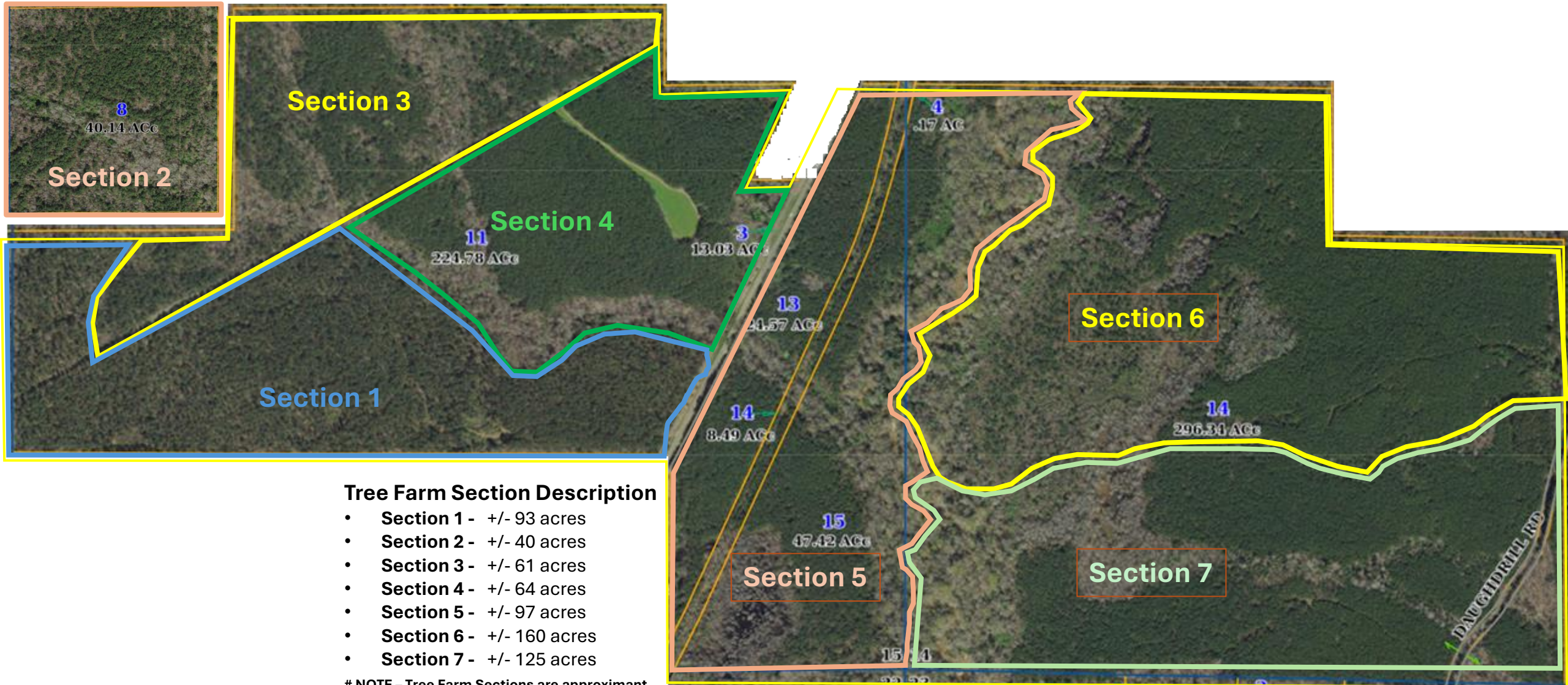
Updated 4/7/2025



R.E. Longino – Tree Farm

Tree Farm Section Descriptions

Updated 4/7/2025



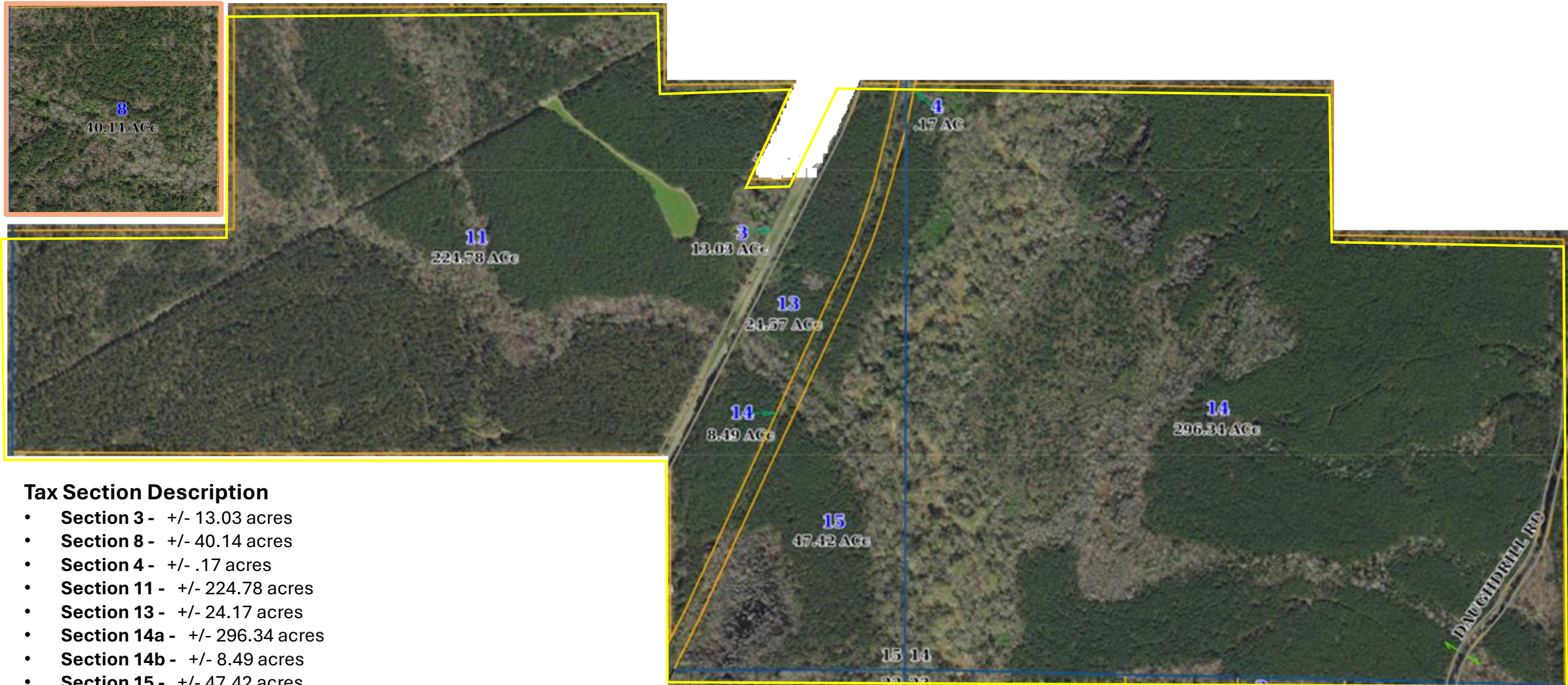
Tree Farm Section Description

- Section 1 - +/- 93 acres
- Section 2 - +/- 40 acres
- Section 3 - +/- 61 acres
- Section 4 - +/- 64 acres
- Section 5 - +/- 97 acres
- Section 6 - +/- 160 acres
- Section 7 - +/- 125 acres

NOTE – Tree Farm Sections are approximant

R.E. Longino – Tree Farm Tax Section Descriptions

Updated 4/7/2025



Tax Section Description

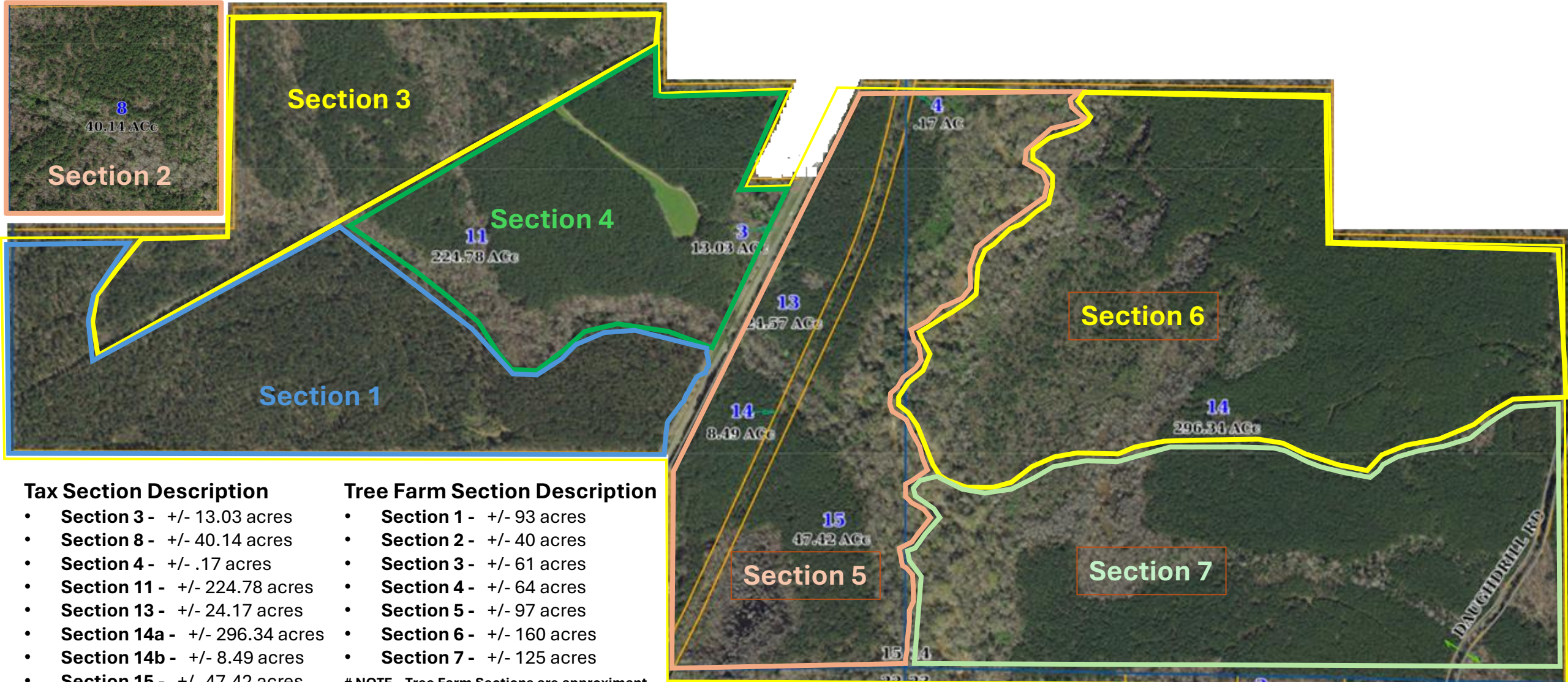
- Section 3 - +/- 13.03 acres
- Section 8 - +/- 40.14 acres
- Section 4 - +/- .17 acres
- Section 11 - +/- 224.78 acres
- Section 13 - +/- 24.17 acres
- Section 14a - +/- 296.34 acres
- Section 14b - +/- 8.49 acres
- Section 15 - +/- 47.42 acres

NOTE – Tax Sections are from Tax Records

R.E. Longino – Tree Farm

Tax & Tree Farm Section Description

Updated 4/7/2025



Tax Section Description

- Section 3 - +/- 13.03 acres
- Section 8 - +/- 40.14 acres
- Section 4 - +/- .17 acres
- Section 11 - +/- 224.78 acres
- Section 13 - +/- 24.17 acres
- Section 14a - +/- 296.34 acres
- Section 14b - +/- 8.49 acres
- Section 15 - +/- 47.42 acres

NOTE – Tax Sections are from Tax Records

Tree Farm Section Description

- Section 1 - +/- 93 acres
- Section 2 - +/- 40 acres
- Section 3 - +/- 61 acres
- Section 4 - +/- 64 acres
- Section 5 - +/- 97 acres
- Section 6 - +/- 160 acres
- Section 7 - +/- 125 acres

NOTE – Tree Farm Sections are approximant

R.E. Longino – Tree Farm Landmark Descriptions

Updated 4/7/2025

