

E
SEC

411TH AVE & BETHANY HOME RD



PhoenixCommercialAdvisors.com



HIGHLIGHTS

- ▶ Full-diamond interchange at 379th Ave and 411th Ave
- ▶ Within 10-miles there are an approximately 28,000 future homes in entitlement (*timing TBD*) with well known communities such as Balterra, Buckeye Ranch. Also close proximity to future master-planned community Belmont which will have ±70,000 homes

SALE

±38.9 ACRES



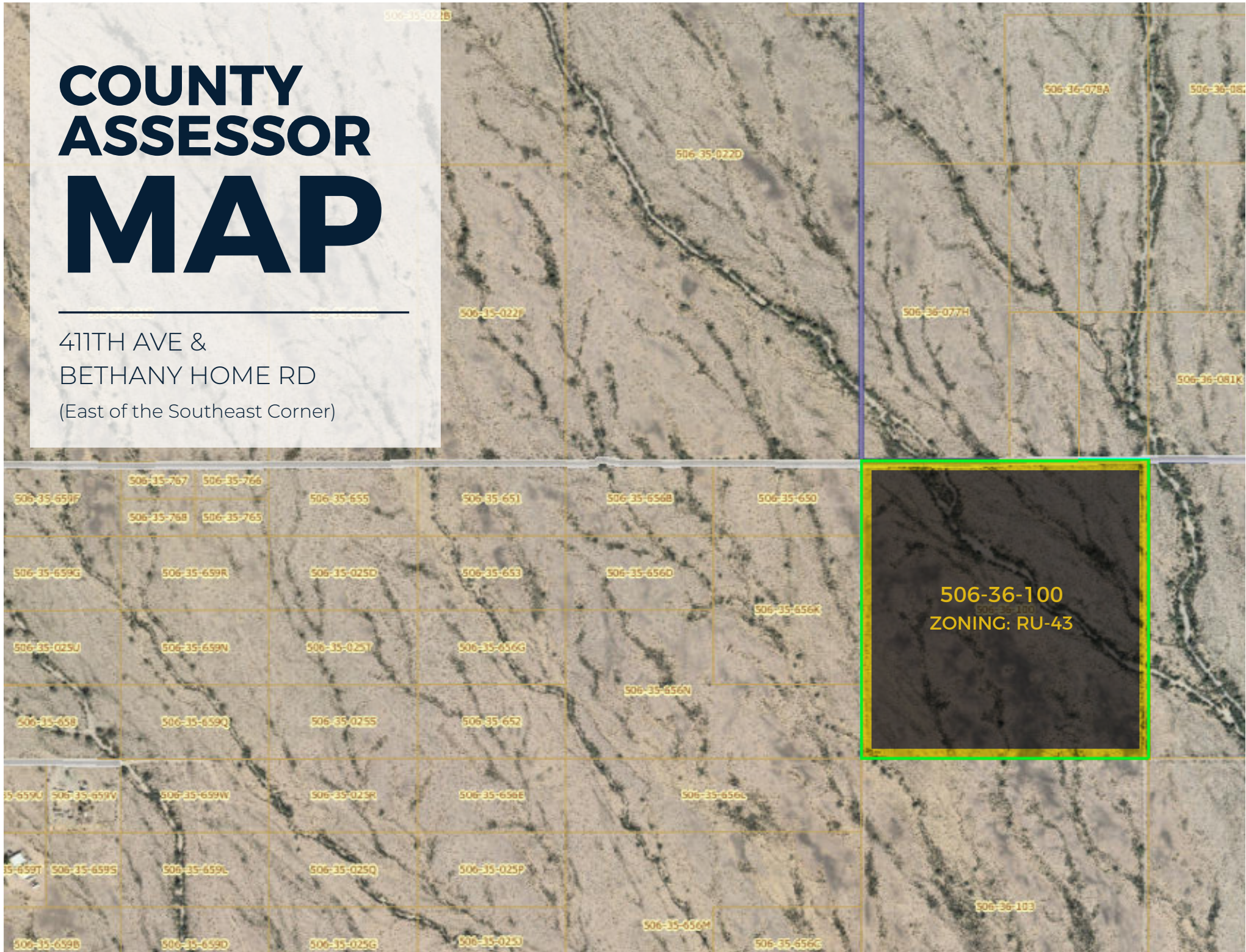
LOCATION	East of the southeast corner of 411th Ave & Bethany Home Rd, Tonopah AZ
SIZE	±38.9-Acres
PRICE	Please Call for Pricing
PARCEL/APN	506-36-100, Maricopa County
ZONING	RU-43
TAXES	\$1,557 (2022 Assessments)
SCHOOLS	Tonopah Valley High School Ruth Fisher Elementary School



PhoenixCommercialAdvisors.com

COUNTY ASSESSOR MAP

411TH AVE &
BETHANY HOME RD
(East of the Southeast Corner)



EXCLUSIVELY LISTED BY

CHRIS SCHMITT

602.288.3464

cschmitt@pcaemail.com

CAMERON WARREN

602.288.3471

cwarren@pcaemail.com



3131 E Camelback Rd, Suite 340
Phoenix, AZ 85016
P 602.957.9800 F 602.957.0889
phoenixcommercialadvisors.com

The information contained herein has been obtained from sources believed reliable. While we do not doubt its accuracy, we have not verified it and make no guarantee, warranty or representation about it. It is your responsibility to independently confirm its accuracy and completeness. Any projections, opinions, assumptions or estimates used are for example only, and do not represent the current or future performance of the property. The value of this transaction to you depends on tax and other factors which should be evaluated by your tax, financial and legal advisors. You and your advisors should conduct a careful, independent investigation of the property to determine to your satisfaction the suitability of the property for your needs. June 11, 2024 11:56 AM

