

# 2.1 Million Outback Resort For Sale

41 Acres in a National Monument Park

*Located adjacent to Balch Park.*

*The terrain is steep to gently sloping with apple orchard on South-East of property. Beautiful home with Basement workshop, two-story bunkhouse, and two-story barn.*



## *Remote Paradise*

*43267 Bear Creek Road D*

*Springville, California 93265-Tulare County*

**Bill Whitlatch**

**GRI, RE Masters™, CCIM**

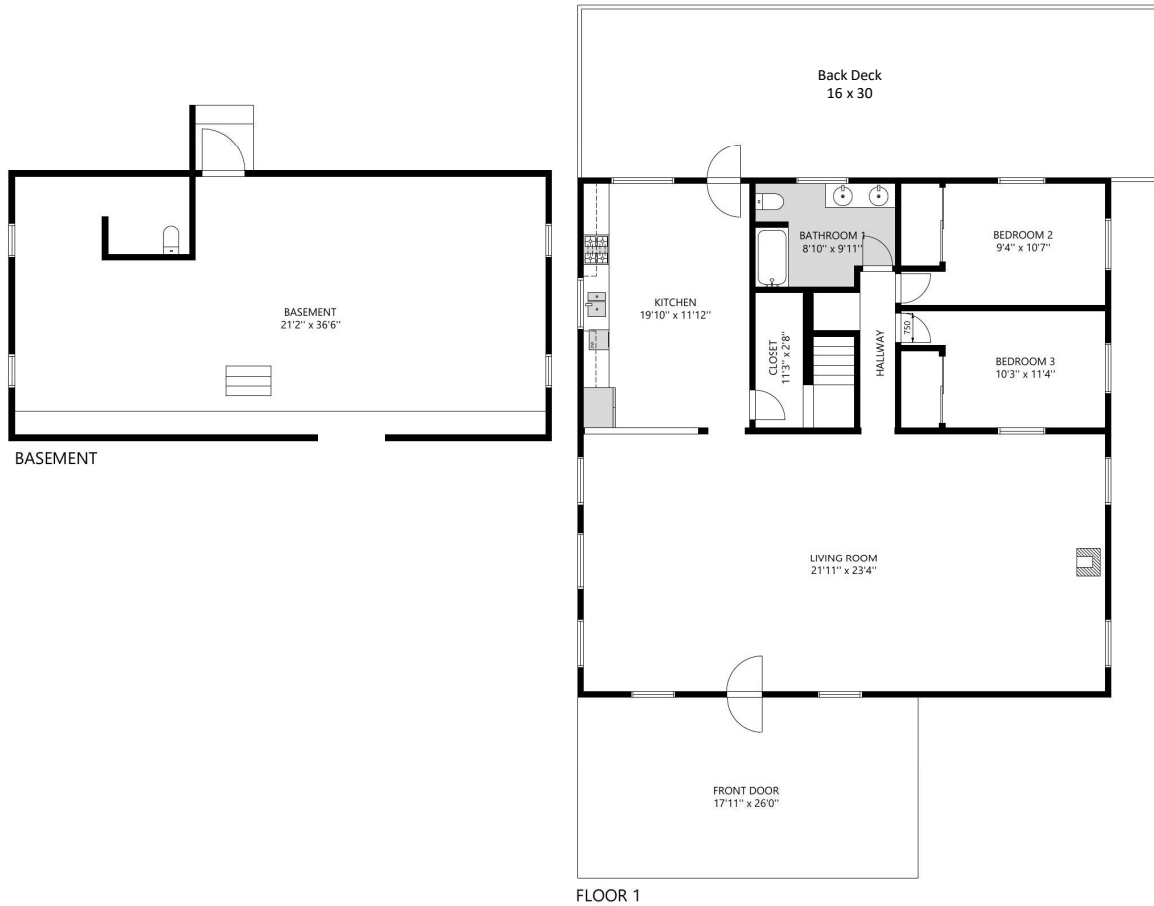
**Broker, DRE Lic. #00874715**

**559-679-6611 • [bill@whitlatch.net](mailto:bill@whitlatch.net)**

NO WARRANTY OR REPRESENTATION, EXPRESS OR IMPLIED, IS MADE AS TO THE ACCURACY OF THE INFORMATION CONTAINED HEREIN, AND THE SAME IS SUBMITTED SUBJECT TO ERRORS, OMISSIONS, CHANGE OF PRICE, RENTAL OR OTHER CONDITIONS, PRIOR SALE, LEASE OR FINANCING, OR WITHDRAWAL WITHOUT NOTICE, AND OF ANY SPECIAL LISTING CONDITIONS IMPOSED BY OUR PRINCIPALS NO WARRANTIES OR REPRESENTATIONS ARE MADE AS TO THE CONDITION OF THE PROPERTY OR ANY HAZARDS CONTAINED THEREIN ARE ANY TO BE IMPLIED.

525 West Center Avenue Suite D  
Visalia, California 93277  
[whitlatchre.com](http://whitlatchre.com)

# Main house



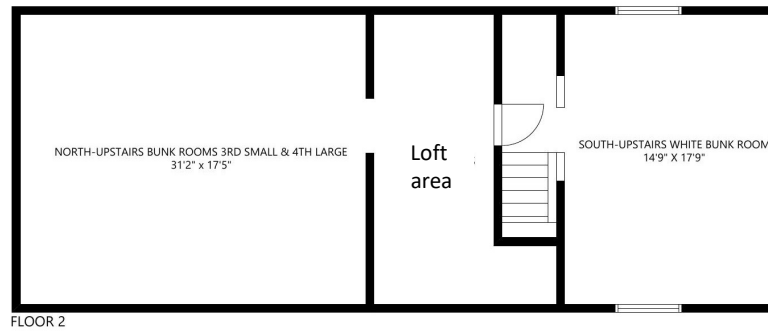
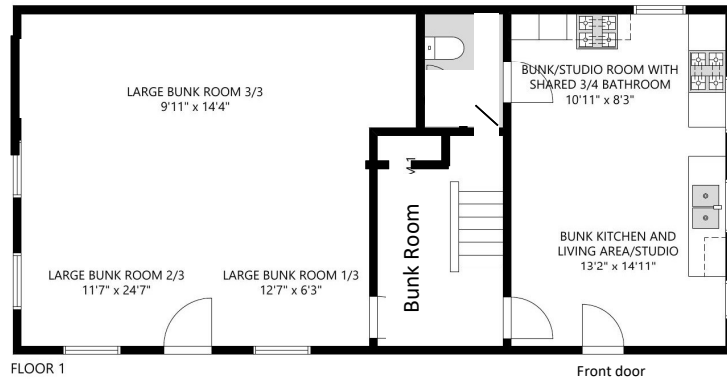
SIZE AND DIMENSIONS ARE APPROXIMATE, ACTUAL MAY VARY.

NO WARRANTY OR REPRESENTATION, EXPRESS OR IMPLIED, IS MADE AS TO THE ACCURACY OF THE INFORMATION CONTAINED HEREIN.

Scan QR  
code with  
your  
device  
for your  
own  
personal,  
virtual  
tour  
of the  
remodeled  
home



## Two-story Bunk house



SIZE AND DIMENSIONS ARE APPROXIMATE, ACTUAL MAY VARY.

NO WARRANTY OR REPRESENTATION, EXPRESS OR IMPLIED, IS MADE AS TO THE ACCURACY OF THE INFORMATION CONTAINED HEREIN.

Scan QR code with your device for your own personal, virtual tour of the original built two-story bunk house





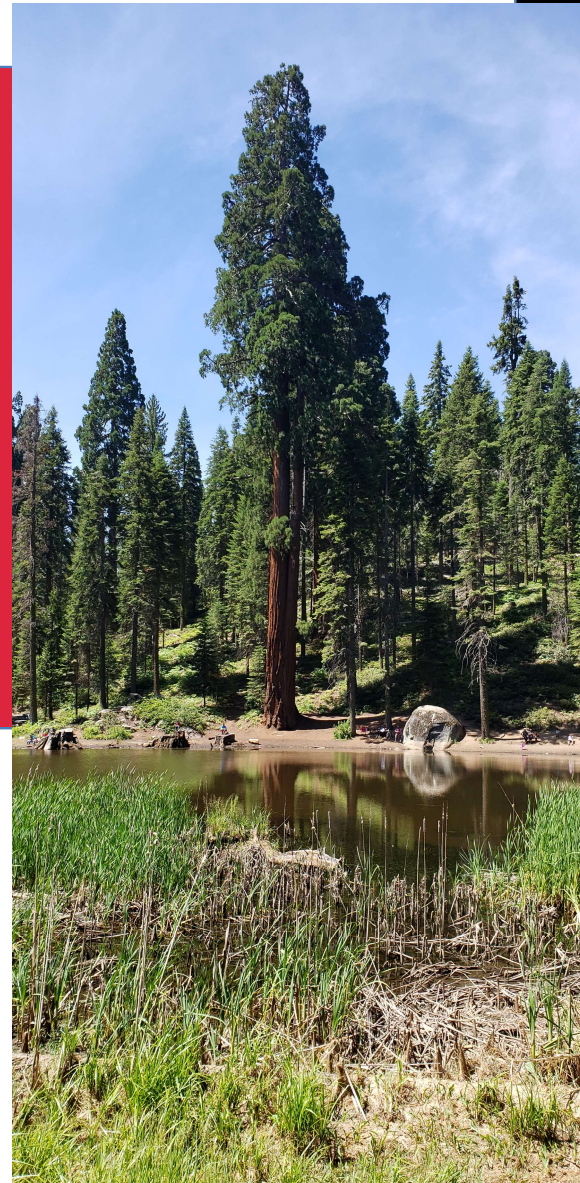
*Two-story Barn*

*Friendly grazers*



*off the grid...*

*Two-story barn with three horse stables. Included utilities; solar electric, and Spring water.*



*Beautiful terrain to explore*



**Bill Whitlatch, GRI, RE Masters™, CCIM**  
Broker, DRE Lic. #00874715  
559-679-6611 • bill@whitlatch.net

*Scan QR code with your device for your own personal, virtual tour of the original built two-story barn*



Springville, California – Tulare County

[whitlatchre.com](http://whitlatchre.com)