

For Lease

# Holcomb Ave. & Ryland St.



295 Holcomb Ave.  
Suite 200  
Reno, NV 89502

**Michael Keating, SIOR**  
Partner  
775.386.9727  
mkeating@logicCRE.com  
S.0174942

**Michael Dorn**  
Senior Associate  
775.453.4436  
mdorn@logicCRE.com  
S.0189635

## Listing Snapshot



**\$1.75 PSF NNN**  
Lease Rate



**± 3,890 SF**  
Available Square Footage



**\$0.45**  
Estimated Lease Expense

## Property Highlights

- Second floor office space
- Eleven (11) private offices & twelve (12) work stations
- Kitchenette & two (2) private restrooms
- One (1) conference room
- Seven (7) garage parking spaces
- Easy access to Downtown & MidTown
- Elevator served

## Demographics

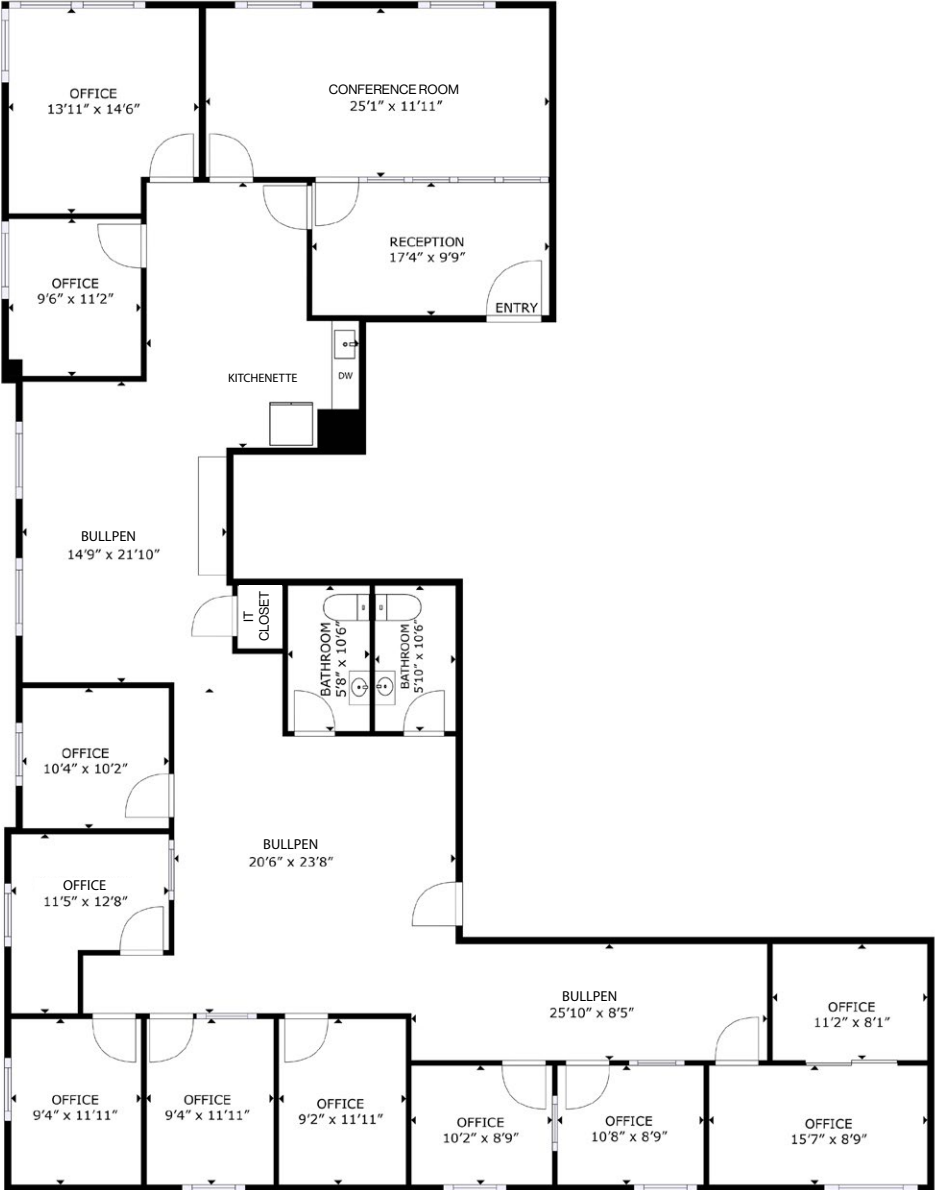
	1-mile	3-mile	5-mile
2024 Population	20,727	141,162	252,771
2024 Average Household Income	\$79,684	\$83,689	\$95,745
2024 Total Households	11,185	60,865	105,711





# Floor Plan | Suite 200

[Click for a Virtual Tour](#) 

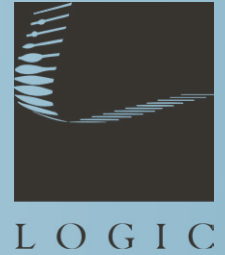


Property Photos



# LOGIC Commercial Real Estate

## Specializing in Brokerage and Receivership Services



Join our email list and  
connect with us on LinkedIn

The information herein was obtained from sources deemed reliable; however LOGIC Commercial Real Estate makes no guarantees, warranties or representation as to the completeness or accuracy thereof.

For inquiries please reach out to our team.

**Michael Keating, SIOR**

Partner  
775.386.9727  
mkeating@logicCRE.com  
S.0174942

**Michael Dorn**

Senior Associate  
775.453.4436  
mdorn@logicCRE.com  
S.0189635