

MAJESTIC FREEWAY BUSINESS CENTER

347,672 SF | INDUSTRIAL WAREHOUSE SPACE | AVAILABLE FOR LEASE

18369 Harvill Avenue, Building #19, Riverside County, CA



- ▶ Office 2,497 SF
- ▶ ESFR Fire Sprinkler System
- ▶ LED Warehouse Lighting
- ▶ Ample Auto & Trailer Parking
- ▶ Immediate Access to I-215 via Cajalco Road & Harley Knox Boulevard

For more information, contact:

Taylor Talt
D-(562) 654-2734 C-(626) 660-8829
R.E. License #01901707 (CA)
Ttalt@MajesticRealty.com

John Semcken
D-(562) 948-4306 C-(562) 556-1887
R.E. License #00979758 (CA)
JSemcken@MajesticRealty.com

Jack Semcken
D-(562) 576-1643 C-(626) 379-6138
R.E. License #02290390 (CA)
jacksemcken@MajesticRealty.com



MAJESTIC FREEWAY BUSINESS CENTER RIVERSIDE COUNTY, CA

BUILDING 19: 347,672 SF
18369 Harvill Avenue, Riverside County, CA

36'
Clear
Height

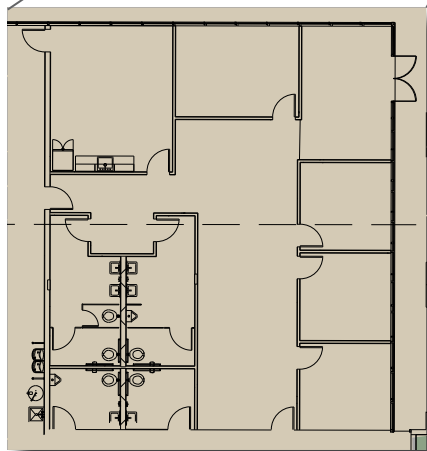
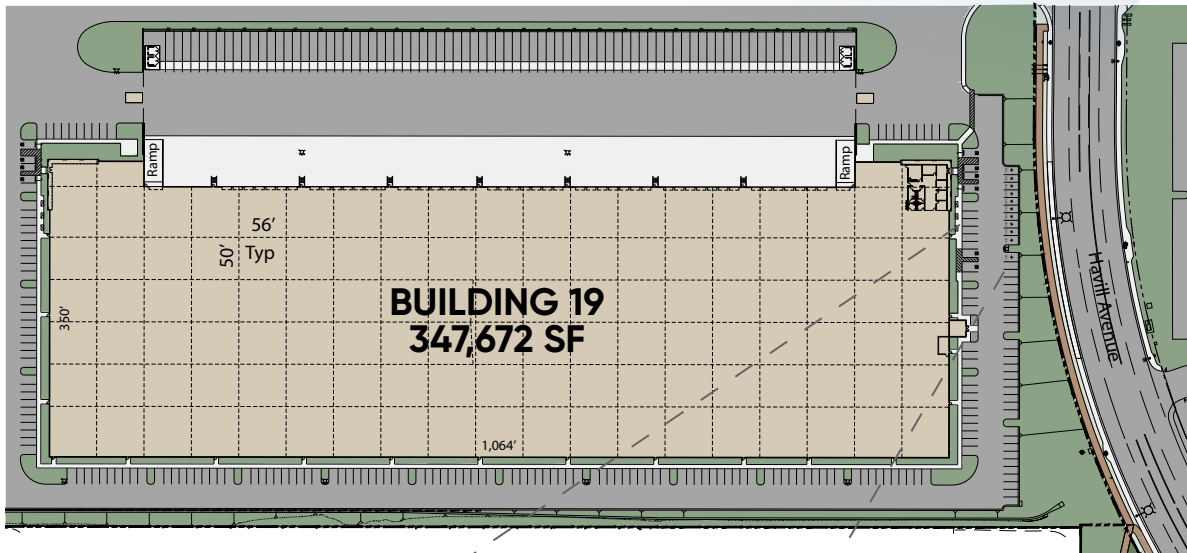
49
Dock High
Doors

272
Auto
Parking
Stalls

79
Trailer
Parking
Stalls

BUILDING 19 SPECS

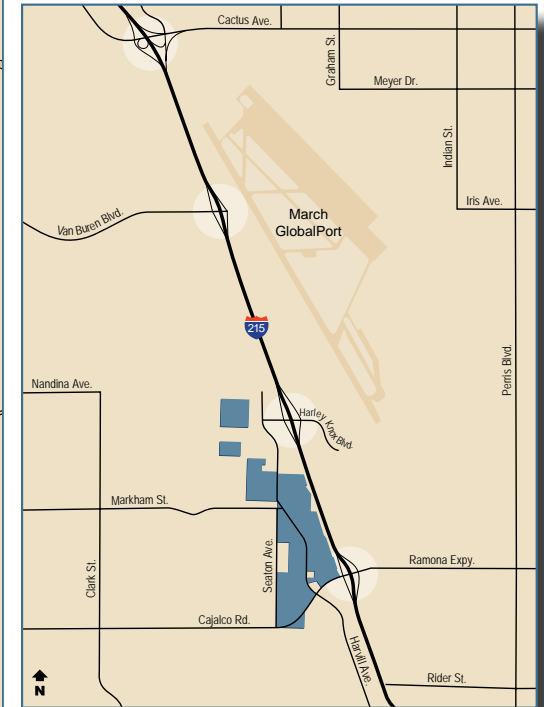
Total Size	347,672 SF
Office	2,497 SF (Constructed)
Loading	49 DH Doors -25 Mechanical Levelers at Every Other Dock Door 2 Grade Level Ramps
Power	1 - 4,000 Amp, 277/480V, 3 Ph
Column Spacing	50' x 56' Typical Bay
Speed Bay	60'
Building Depth	350'
Sprinklers	ESFR
Lighting	LED @ 20 FC for Bulk Storage



OFFICE
2,497 SF

MAJESTIC FREEWAY BUSINESS CENTER RIVERSIDE COUNTY, CA

LOCATION



The Majestic Freeway Business Center is located between Harley Knox Boulevard and Cajalco Road on the I-215 Freeway in Riverside County, California.

MAJESTIC FREEWAY BUSINESS CENTER RIVERSIDE COUNTY, CA

CORPORATE
NEIGHBORS



This statement is based upon information which we believe to be correct and is obtained from sources we regard as reliable but we assume no liability for errors or omissions therein.