

RETAIL / MEDICAL OFFICE

3624 MARTIN LUTHER KING JR BLVD, LYNWOOD, CA

FOR
LEASE



THE YAMZON TEAM



JORGE YAMZON

Remax Commercial
Senior Vice President / Director
Direct: 626-786-5869
Email: jorgeyamzon@remax.net
CA DRE LICENSE #01359483

DEREK ING

Remax Commercial
VP / Senior Analyst
Direct: 626-272-0948
Email: Derek.ing@remaxcre@gmail.com
CA DRE LICENSE #02041751

JP PENA

Real Brokerage
Broker
Direct: 323-632-9904
Email: Jp.pena@thejppenaregroup.com
CA DRE LICENSE #01883397

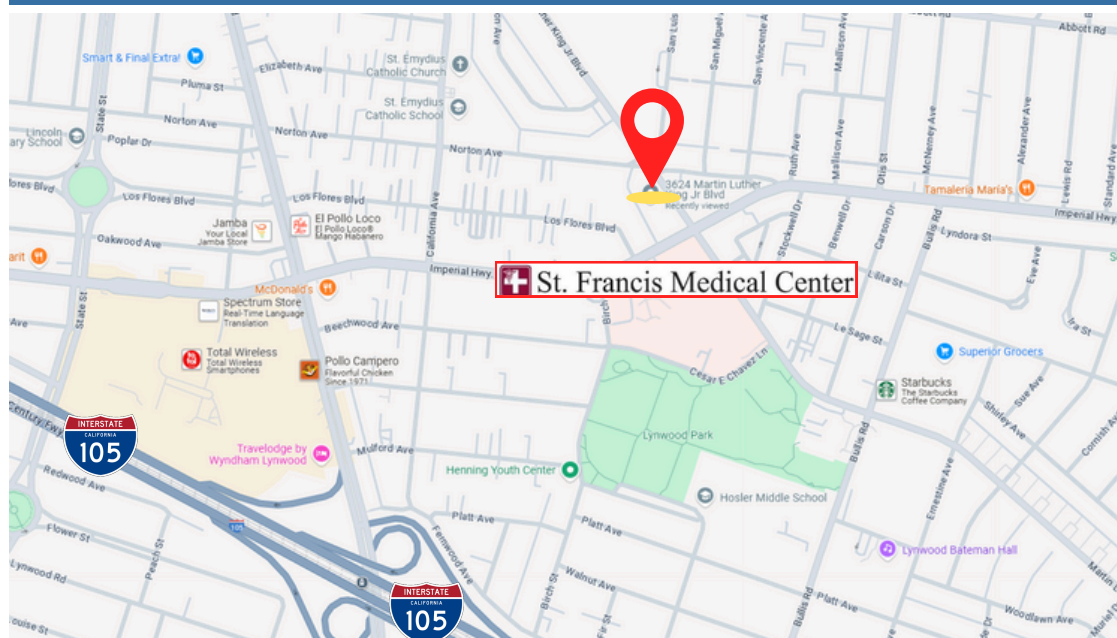
SPACE INFORMATION

UNIT 3620

- Size: ± 800 SF
- Asking Rate: \$3.50 / SF + NNN
- Lease Type: NNN
- Use: Medical Office / Retail
- Zoning: LYC2

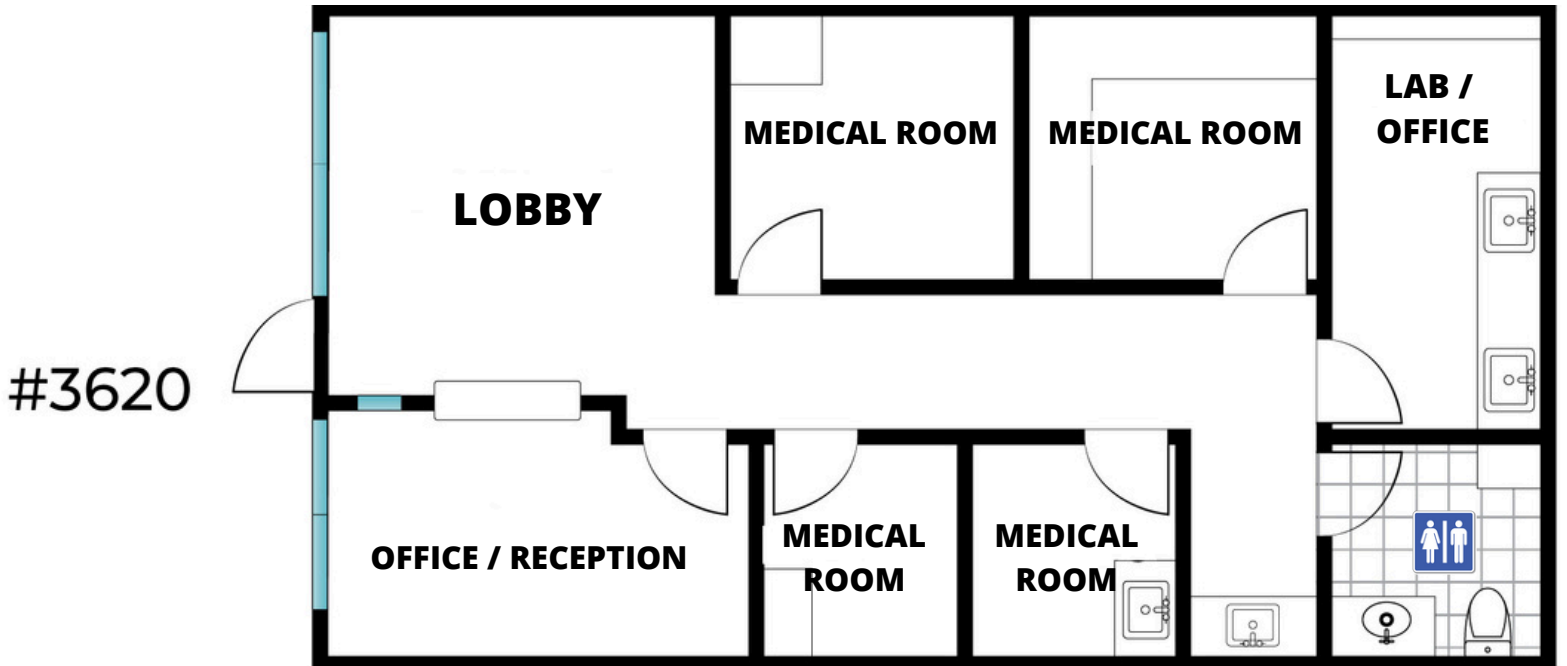
UNIT 3620

- Size: ± 1,000 SF
- Asking Rate: \$3.50 / SF + NNN
- Lease Type: NNN
- Use: Medical Office / Retail
- Zoning: LYC2



UNIT 3620

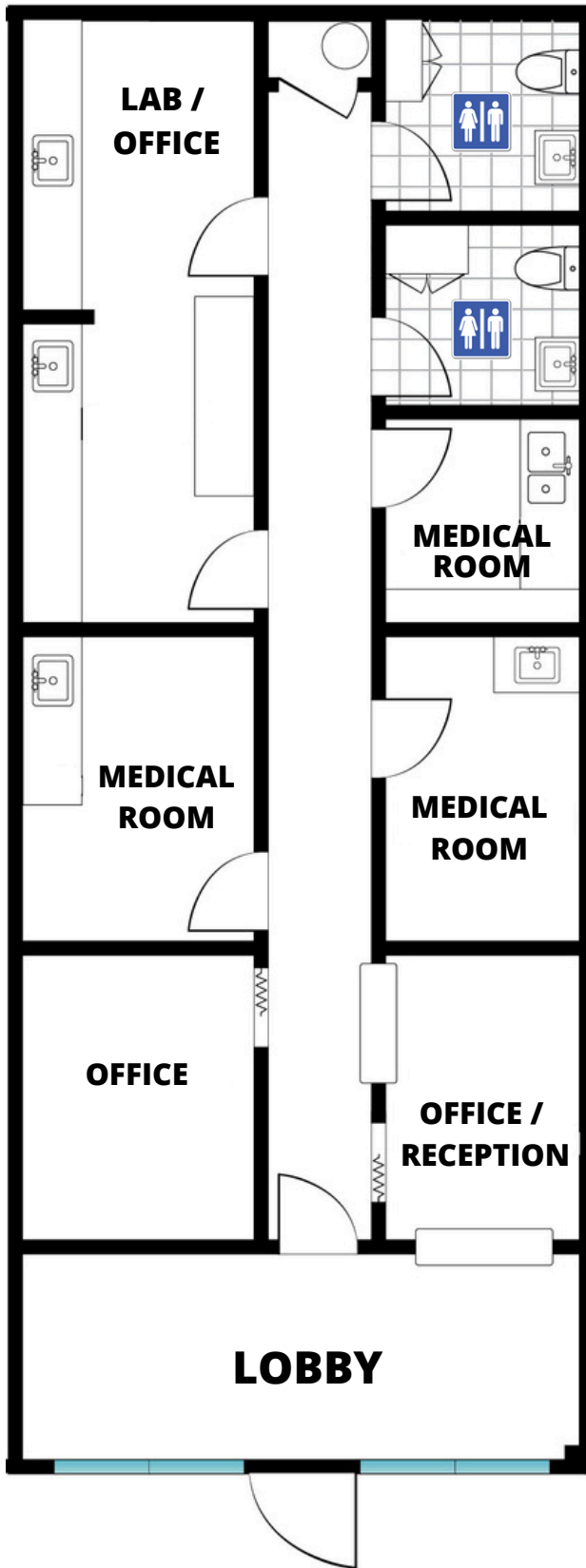
3624 MARTIN LUTHER KING JR BLVD, LYNWOOD, CA | ± 800 SF





UNIT 3624

3624 MARTIN LUTHER KING JR BLVD, LYNWOOD, CA | ± 1,000 SF



UNIT #3624





THE YAMZON TEAM

CONTACT

JORGE YAMZON

Remax Commercial
Senior Vice President / Director
Direct: 626-786-5869
Email: Jorgeyamzon@remax.net
CA DRE LICENSE #01359483

DEREK ING

Remax Commercial
VP / Senior Analyst
Direct: 626-272-0948
Email: Dereking.remaxcre@gmail.com
CA DRE LICENSE #02041751

JP PENA

Real Brokerage
Broker
Direct: (323) 632-9904
Email: Jp.pena@thejppenaregroup.com
CA DRE LICENSE# 01883397