

WELCOME TO YOUR NEW OFFICE!

The Locke Professional Building is located just west of downtown Fort Worth with easy on/off access to I-30 and Chisholm Trail. This beautifully designed building offers modern architecture with sophisticated interiors. Covered parking and independent suite access will provide an impressive client experience. Call today to learn more.

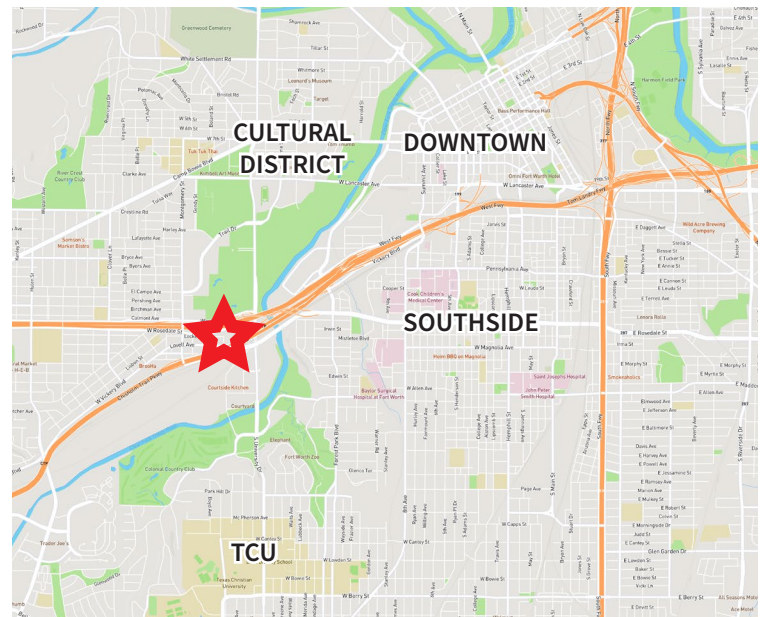
3343 Locke Avenue
Fort Worth, TX 76107

LEASE RATE: \$22.50-\$25/SF NNN



Property Highlights

- Excellent Westside Location
- Easy access to I-30 and Chisholm Trail Parkway
- Proximity to multiple restaurants
- Minutes to Downtown, Southside & Cultural Districts
- Built in 2005
- Parking Ratio: 2.77/1,000
- Covered & surface parking
- Private Suite Entrances
- Suite 103 vacant



For information or to schedule a tour contact:

Adrienne Anderson

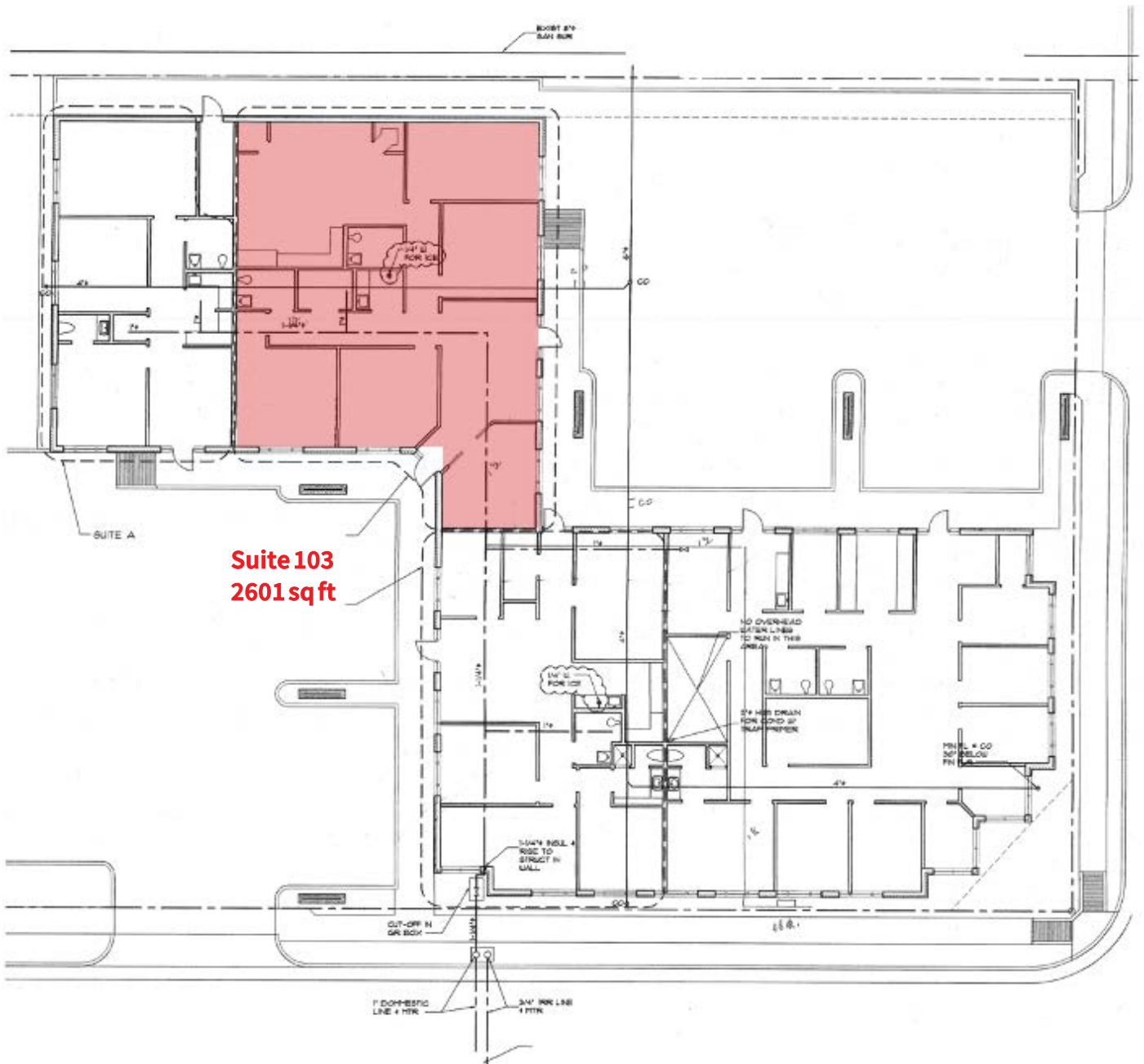
+1 817 539 6400

adrienne.anderson@oakridgepremier.com

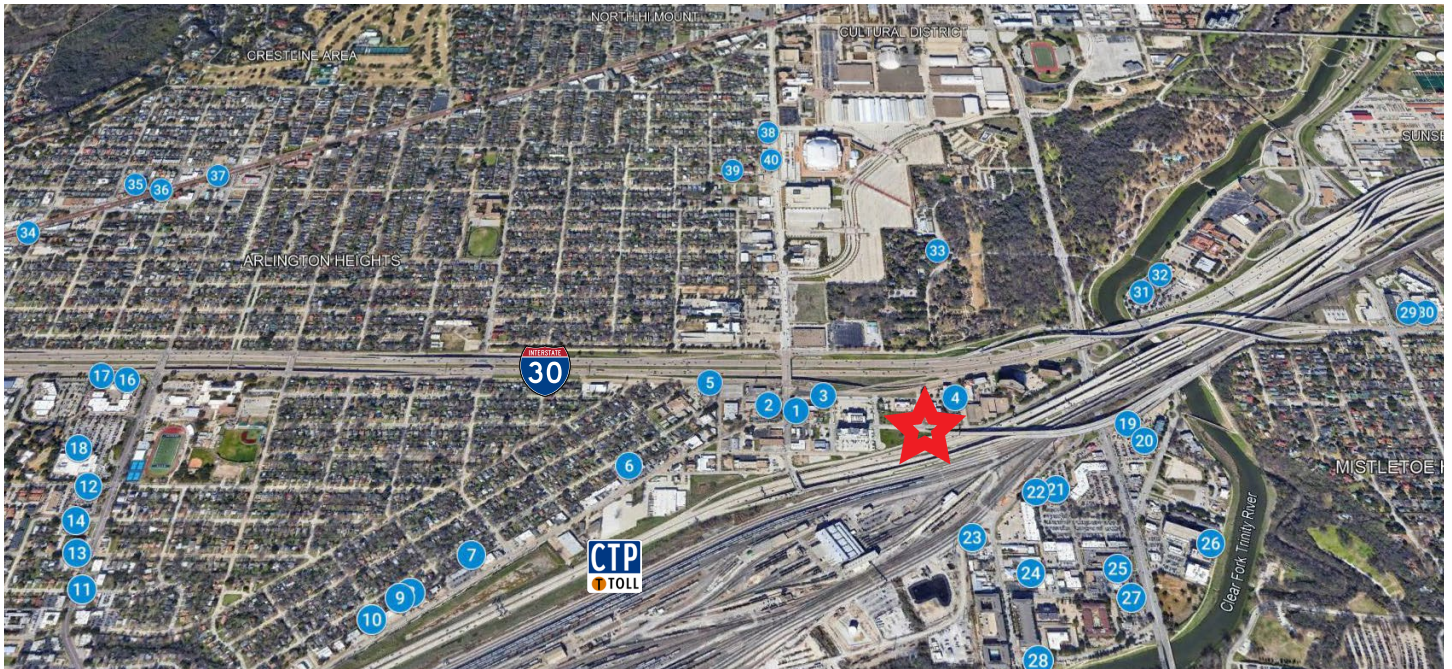
Exterior Photos



Floorplan



Nearby Dining



- | | | | | | |
|----|-----------------------------|----|----------------------------|----|------------------------------|
| 1 | Flying Fish | 15 | Sweet Box | 29 | Torchy's Tacos |
| 2 | Railhead Smokehouse | 16 | Phở Noodle & Grill | 30 | Jason's Deli |
| 3 | Dutch Bros Coffee | 17 | Mi Cocina | 31 | Pappadeaux Seafood Kitchen |
| 4 | Pulido's Mexican Restaurant | 18 | Central Market | 32 | Pappasito's Cantina |
| 5 | Whataburger | 19 | Romano's Macaroni Grill | 33 | Rock Springs Cafe & Catering |
| 6 | Swiss Pastry Shop | 20 | Ol' South Pancake House | 34 | Kincaid's Hamburgers |
| 7 | Vickery Boulevard Cafe | 21 | Blue Goose Cantina | 35 | Lucile's |
| 8 | Thai Terrace | 22 | Pacific Table - Fort Worth | 36 | Blue Bonnet Bakery |
| 9 | Subway | 23 | Rogers Roundhouse | 37 | Nothing Bundt Cakes |
| 10 | Taqueria Melis | 24 | 5th Bayou Boudin and More | 38 | Taco Heads |
| 11 | Zoli's Pizza | 25 | IHOP | 39 | Schlotzsky's |
| 12 | Chick-fil-A | 26 | HG Sply Co. - Fort Worth | 40 | Montgomery Street Cafe |
| 13 | Salad and Go | 27 | Panera Bread | | |
| 14 | McDonald's | 28 | Woodshed Smokehouse | | |

For information or to schedule a tour contact:

Adrienne Anderson

+1 817 539 6400

adrienne.anderson@oakridgepremier.com

DISCLAIMER

Although information has been obtained from sources deemed reliable, neither Owner nor OPPM makes any guarantees, warranties or representations, express or implied, as to the completeness or accuracy as to the information contained herein. Any projections, opinions, assumptions or estimates used are for example only. There may be differences between projected and actual results, and those differences may be material. The Property may be withdrawn without notice. Neither Owner nor OPPM accepts any liability for any loss or damage suffered by any party resulting from reliance on this information. If the recipient of this information has signed a confidentiality agreement regarding this matter, this information is subject to the terms of that agreement. ©2024 OAKRIDGE PREMIER PROPERTY MANAGEMENT. All rights reserved.