

22,000 SF CLASS A MEDICAL OFFICE SPACE

87TH AND RENNER • CITY CENTER • LENEXA, KANSAS

LANE4


AdventHealth
Lenexa City Center

NOW OPEN!

COMING 2026

JOIN →  **Orthopedic
Alliance**




MedDEVELOPMENT

MIKE LEVITAN
816.268.9109 / mlevitan@lane4group.com

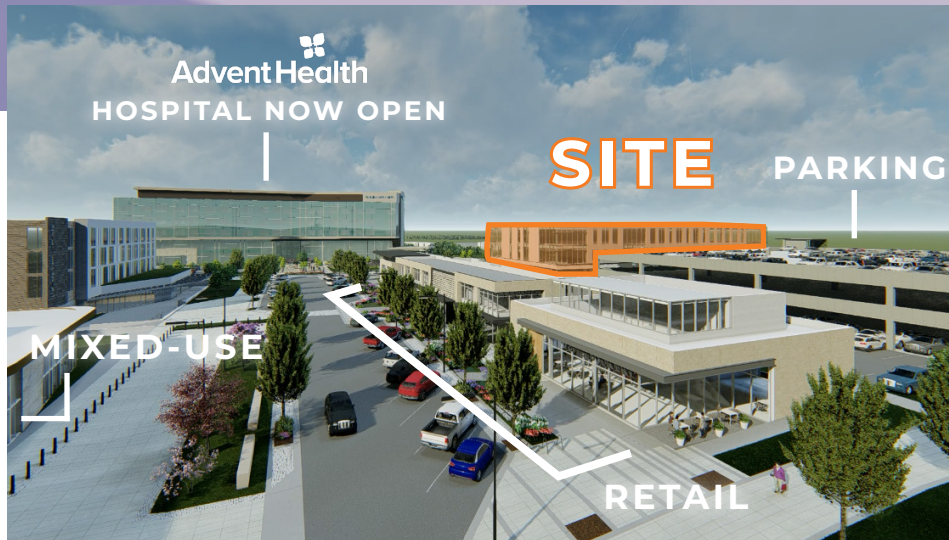
SPENCER STEWART
816.268.9103 / sstewart@lane4group.com

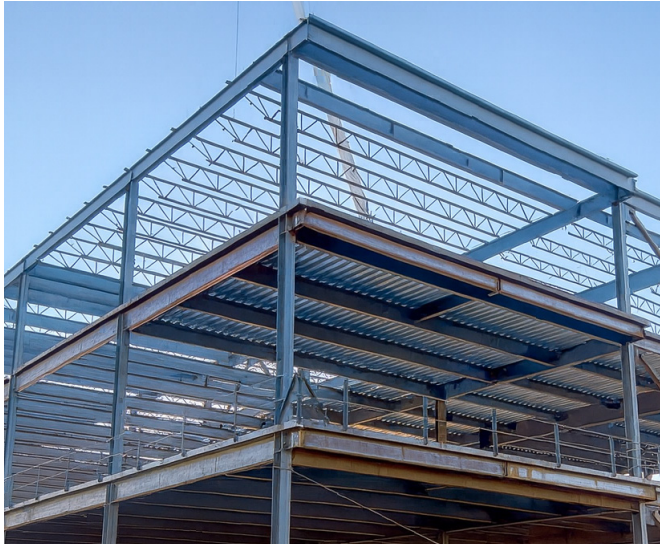
**NOW UNDER
CONSTRUCTION**

Sept. 2026 Delivery

BUILDING HIGHLIGHTS

- Three story, Class A medical office building located on the new 27.5 acre AdventHealth Lenexa City Center
 - Planned September 2026 delivery
 - Highly walkable, progressive, mixed-use campus with retail, office, and medical
- Third floor: 22,000 RSF for lease
- Second Floor: Ambulatory surgical center (*single specialty*)
- Kansas City Orthopedic Alliance to occupy first floor
- Free covered parking via connected garage
- Adjacent to new \$247M, 100-bed, full-service AdventHealth hospital - **now open!**
- Located in Lenexa City Center, a walkable, rapidly growing hub driving economic growth in West Johnson County





CONSTRUCTION PROGRESS



MEDICAL OFFICE BUILDING

22,000 SF

3RD FLOOR
TYPICAL FLOOR PLATE



K Orthopedic
Alliance



NORTH ELEVATION

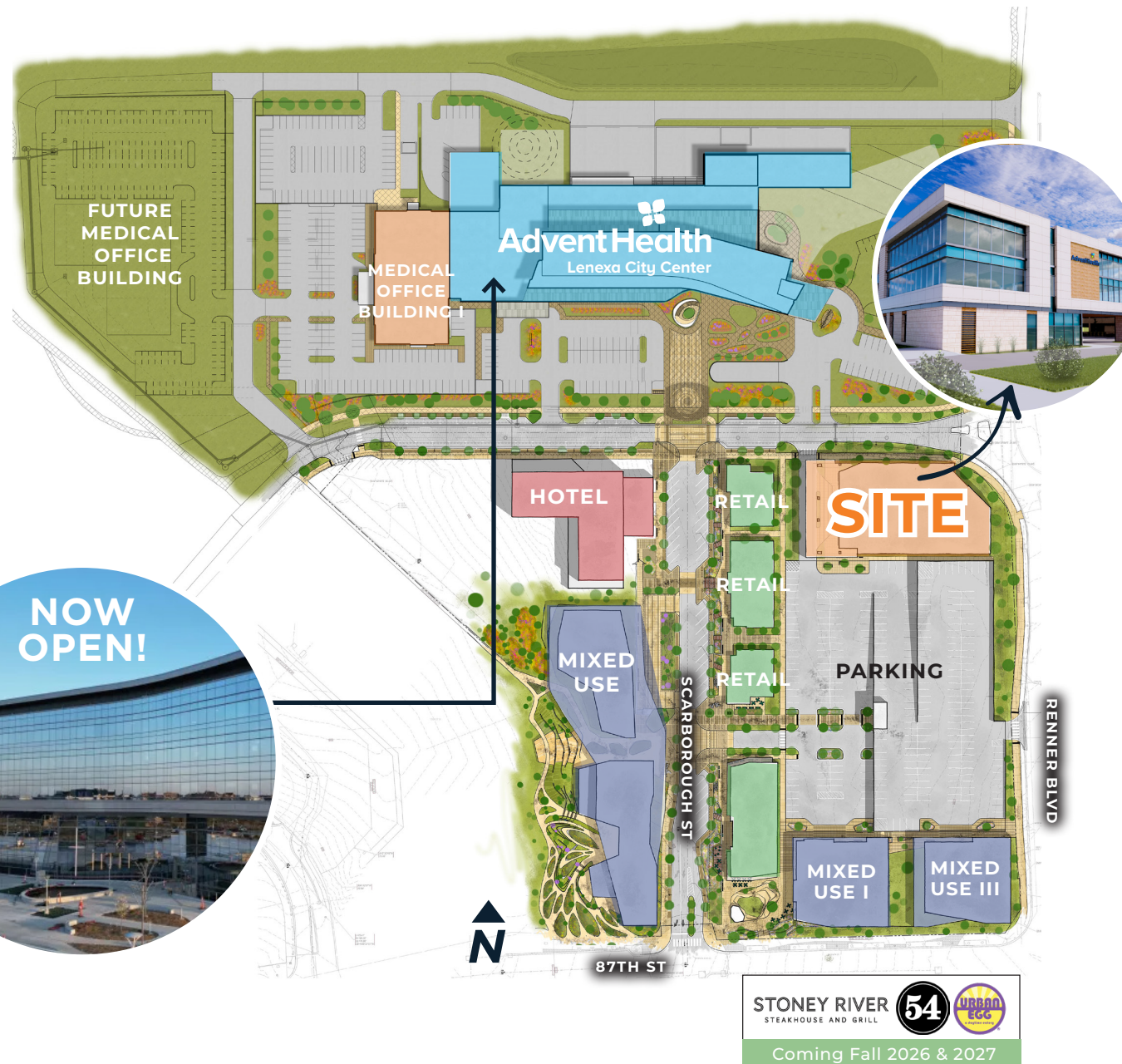
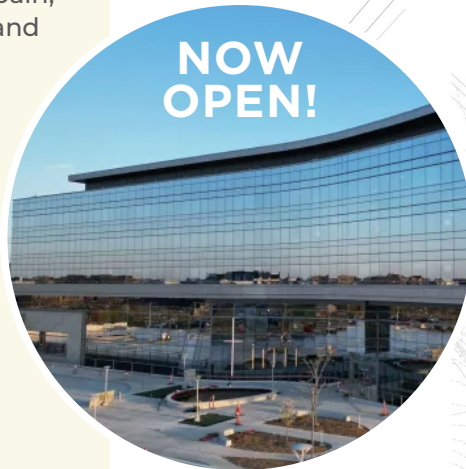
**Size and scope of project subject to change.*

NOW OPEN!

ADVENT HEALTH LENEXA CITY CENTER

**244,000 SF state-of-the-art,
full-service facility including:**

- 24/7 emergency care
 - Capacity for 98 total beds
 - 4 operating rooms
- Surgical services, including advanced robotic surgery technology intended to make smaller incisions, involve less pain, scarring and shorter hospital stays, and result in faster recovery times
- Heart and vascular care
- Orthopedic care
- Imaging services
- Digestive and pulmonary care



SHAWNEE
MISSION PARK

CAMPUS
SITE

COMING SOON



STONEY RIVER
STEAKHOUSE AND GRILL

Proposed Daycare



Walgreens



RESTAURANT ROW



LENEXA CITY
CENTER

RENNER BLVD



CANYON FARMS
GOLF CLUB



SONOMA PLAZA



LANE4

MedDEVELOPMENT



LENEXA CITY CENTER

2 MILLION SF OF CIVIC SPACE

1 MILLION SF OF OFFICE + RETAIL

375+ RESIDENTIAL UNITS