

11 Brick Kiln Ct

Northampton, PA 18067



6,175sf 3 bay garage.
1,120sf office space.

The garage consists of 2 standard garage bays and 1 wash bay. 27ft tall ceiling height. 65 foot depth for each bay. Floor drain with oil and water separator. Exhaust fans in garage area. Employee locker room area, Lunch/break area, restroom, Parts room, storage and office space.

The office consists of private office, common area, kitchenette and 2 rest rooms.

The property is situated on 4.52ac and is Zoned I-Industrial. Most recently used to maintain a cement truck business fleet and act as business head quarters.



\$32 SF/YR

I-Beam Construction
27 ft Ceiling Height
65 ft Garage Depth

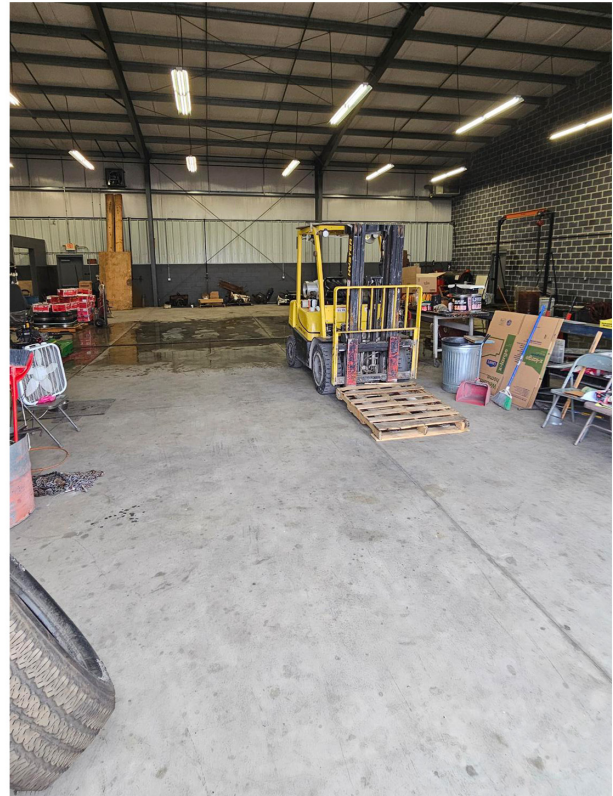
Szymon Jan Bzdek

1605 n. cedar crest blvd.
suite 309
allentown, pa 18104

cell: 484-626-3095
office: 610-435-4711
fax: 610-435-2900



Garage Interior



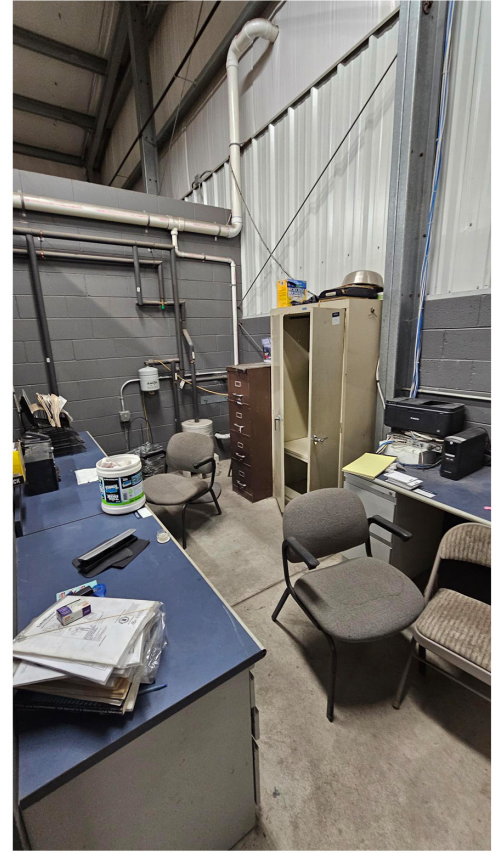
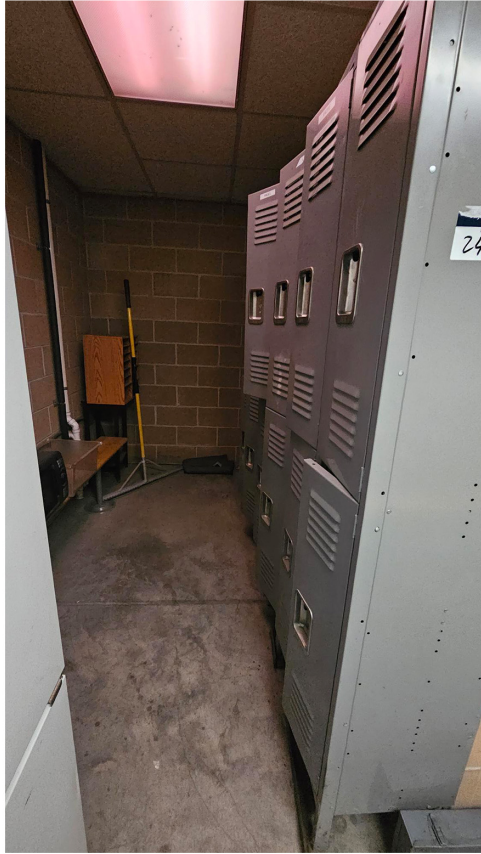
Szymon Jan Bzdek

1605 n. cedar crest blvd.
suite 309
allentown, pa 18104

cell: 484-626-3095
office: 610-435-4711
fax: 610-435-2900



LockerRoom/Office



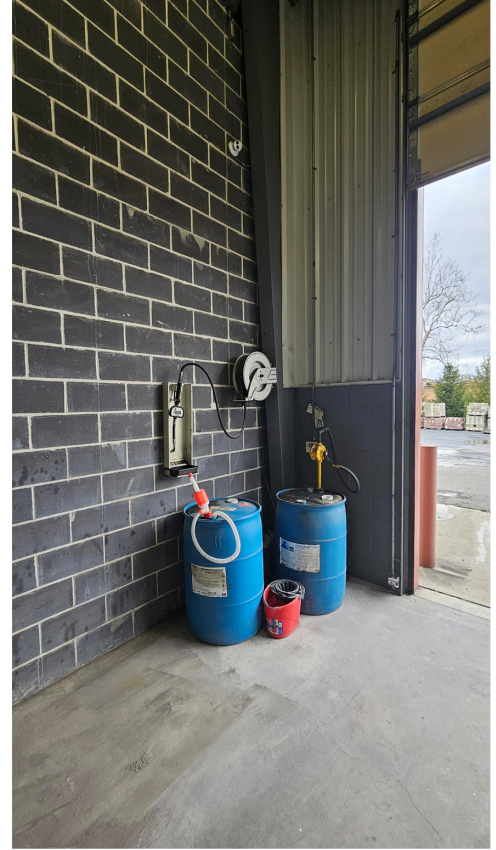
Szymon Jan Bzdek

1605 n. cedar crest blvd.
suite 309
allentown, pa 18104

cell: 484-626-3095
office: 610-435-4711
fax: 610-435-2900



Drive Through Wash Bay



Szymon Jan Bzdek

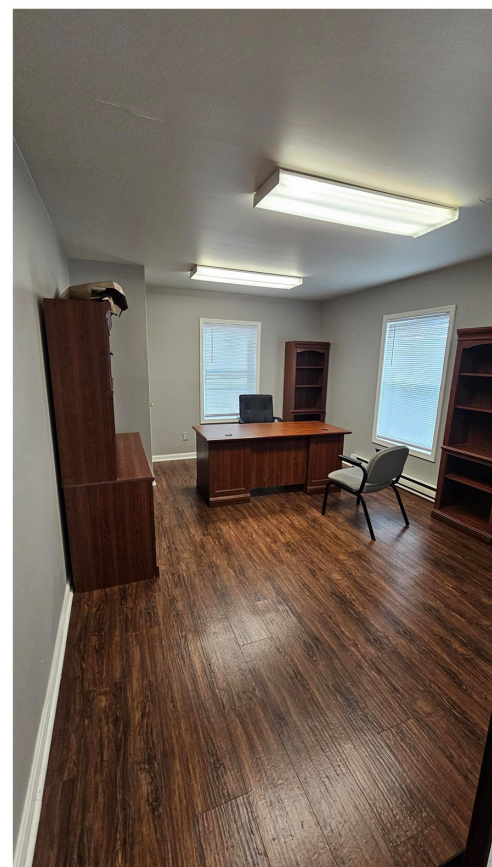
1605 n. cedar crest blvd.
suite 309
allentown, pa 18104



cell: 484-626-3095
office: 610-435-4711
fax: 610-435-2900



Office Interior



Szymon Jan Bzdek

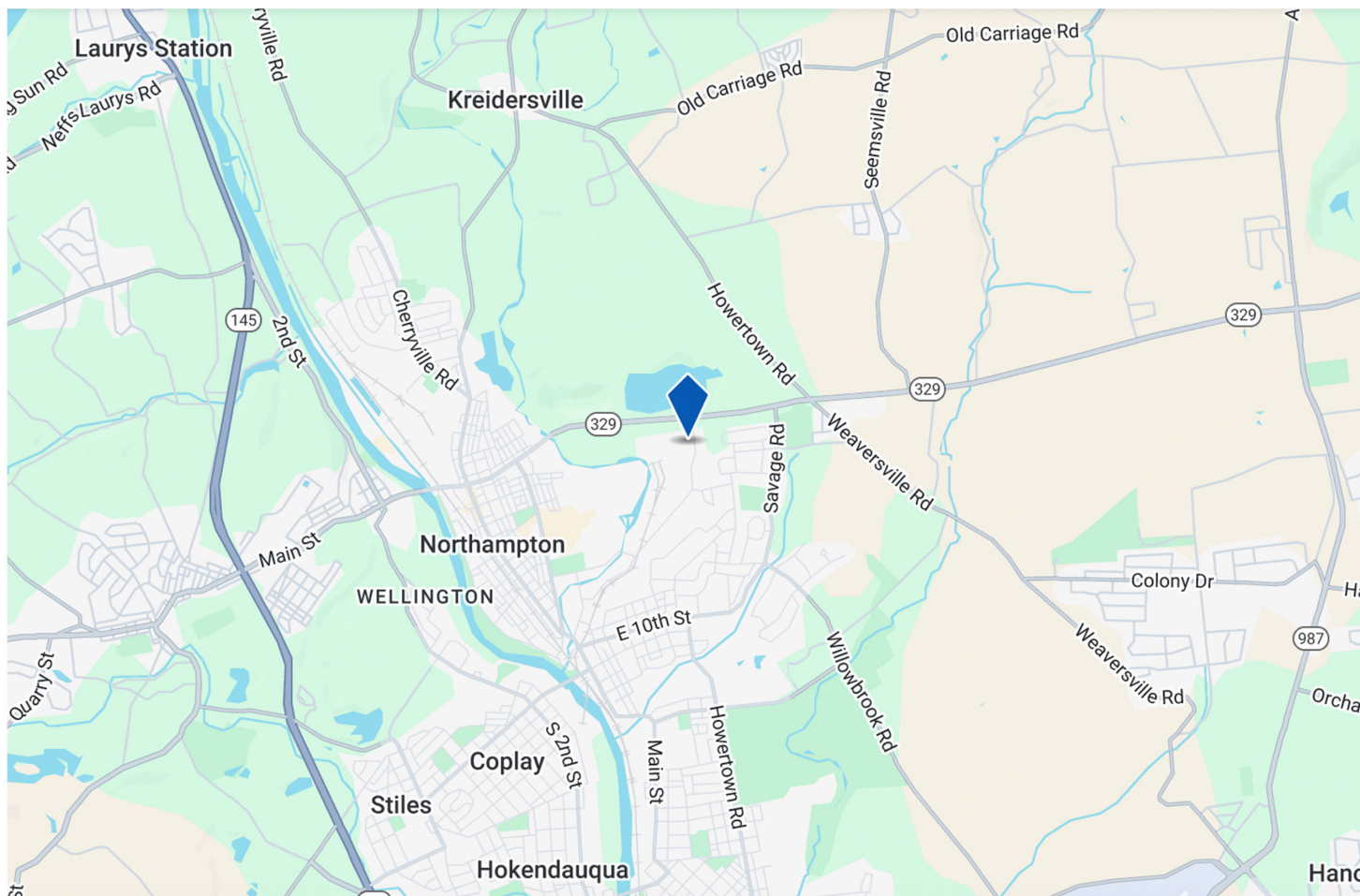
1605 n. cedar crest blvd.
suite 309
allentown, pa 18104

cell: 484-626-3095
office: 610-435-4711
fax: 610-435-2900



11 Brick Kiln Ct

Northampton, PA 18067



AIRPORT

Lehigh Valley International 

10 min drive

4.2 mi

FREIGHT PORT

Port of Philadelphia

94 min drive

69.9 mi

RAILROAD

Foulk Reload

4 min drive

1.6 mi

Szymon Jan Bzdek

1605 n. cedar crest blvd.
suite 309
allentown, pa 18104

cell: 484-626-3095
office: 610-435-4711
fax: 610-435-2900

