

OFFICE  
LEASE

65,617 RSF  
TOTAL

CLASS B  
OFFICE SPACE

RENOVATED  
2019



TRANSWESTERN

REAL ESTATE  
SERVICES

# Northeast Executive Center

12015 E. 46<sup>th</sup> Ave, Denver CO 80239

3,100 SF - 13,657 SF Available



## Availability:

- **Suite 200:** 5,626 SF
- **Suite 500:** 8,031 SF (Divisible to 3,100 SF)

## Space Features:

- **Lease Rate:** From \$18.00/RSF FSG
- **Expenses:** Base Year
- **Lease Term:** 3-10 Years
- **Parking:** Generous free parking at 4.46:1,000/RSF

## Building Amenities:

- Renovated building with new exterior paint & landscaping
- 5 minutes to I-70 and I-225
- 10 minutes to the Peoria Station and the A Train
- 16 minutes to DIA & Downtown Denver
- Plenty of nearby restaurants, hotels and services
- Located in a Colorado Enterprise Zone



## Leasing Information:

**Karen Clarke**  
(720) 891-6000  
karen.clarke@transwestern.com

**Lily Austin**  
(713)-244-4445  
lily.austin@transwestern.com

The information provided herein was obtained from sources believed reliable; however, Transwestern makes no guarantees, warranties or representations as to the completeness or accuracy thereof. The presentation of this property is submitted subject to errors, omissions, change of price or conditions, prior sale or lease, or withdrawal without notice. Copyright © 2025 Transwestern.



# Northeast Executive Center

12015 E. 46<sup>th</sup> Ave, Denver CO 80239



TRANSWESTERN

REAL ESTATE  
SERVICES

## Region



### Leasing Information:

**Karen Clarke**  
(720) 891-6000  
karen.clarke@transwestern.com

**Lily Austin**  
(713)-244-4445  
lily.austin@transwestern.com

The information provided herein was obtained from sources believed reliable; however, Transwestern makes no guarantees, warranties or representations as to the completeness or accuracy thereof. The presentation of this property is submitted subject to errors, omissions, change of price or conditions, prior sale or lease, or withdrawal without notice. Copyright © 2025 Transwestern.



# Northeast Executive Center

12015 E. 46<sup>th</sup> Ave, Denver CO 80239



TRANSWESTERN

REAL ESTATE  
SERVICES

## Amenities



### Leasing Information:

**Karen Clarke**  
(720) 891-6000  
karen.clarke@transwestern.com

**Lily Austin**  
(713) 244-4445  
lily.austin@transwestern.com

The information provided herein was obtained from sources believed reliable; however, Transwestern makes no guarantees, warranties or representations as to the completeness or accuracy thereof. The presentation of this property is submitted subject to errors, omissions, change of price or conditions, prior sale or lease, or withdrawal without notice. Copyright © 2025 Transwestern.





## Leasing Information:

**Karen Clarke**

(720) 891-6000

karen.clarke@transwestern.com

**Lily Austin**

(713)-244-4445

lily.austin@transwestern.com

The information provided herein was obtained from sources believed reliable; however, Transwestern makes no guarantees, warranties or representations as to the completeness or accuracy thereof. The presentation of this property is submitted subject to errors, omissions, change of price or conditions, prior sale or lease, or withdrawal without notice. Copyright © 2025 Transwestern.

# Northeast Executive Center

12015 E. 46<sup>th</sup> Ave, Denver CO 80239

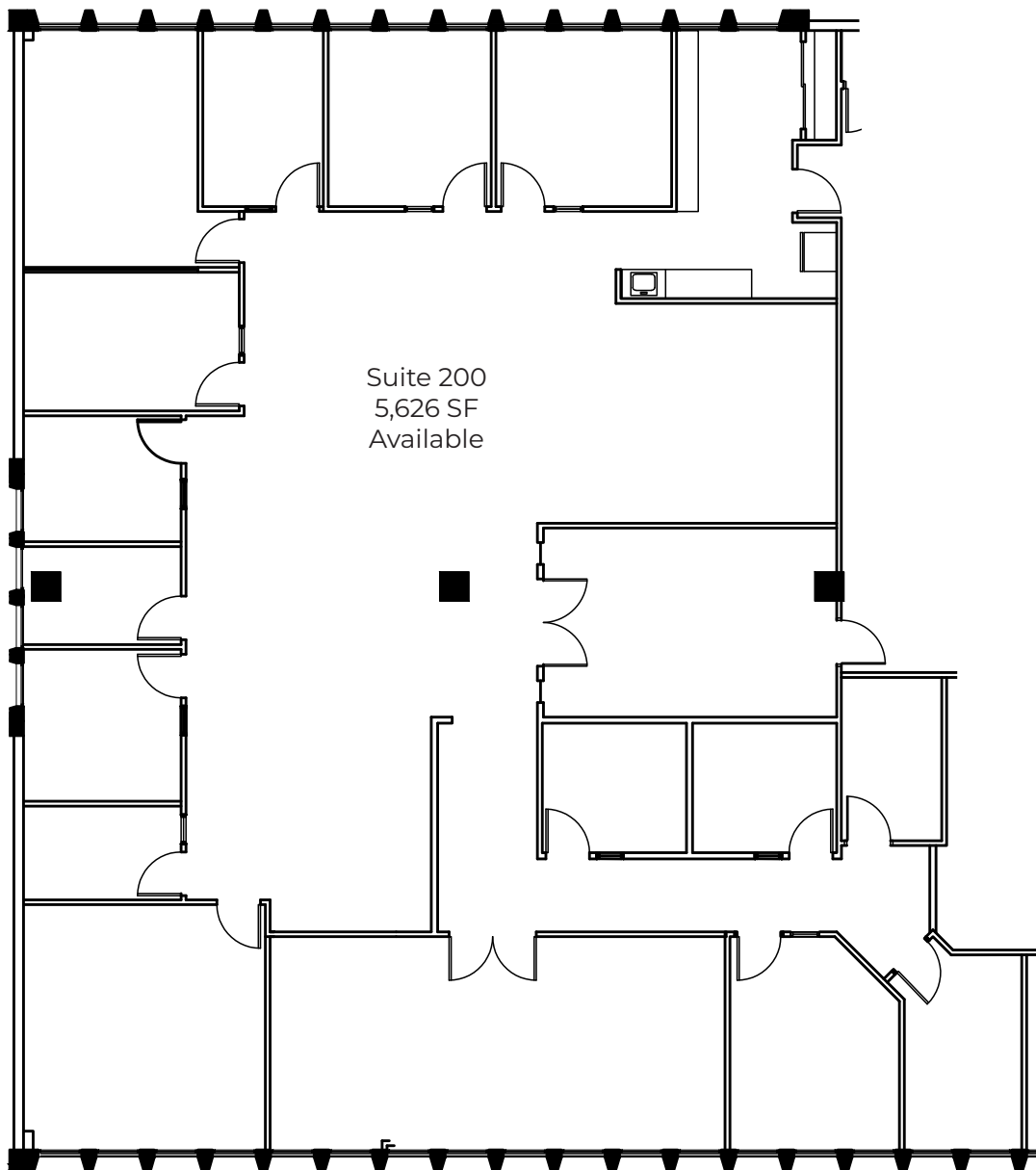


TRANSWESTERN

REAL ESTATE  
SERVICES

## Floor Plan:

Suite 200 | 5,626 SF



## Leasing Information:

**Karen Clarke**

(720) 891-6000

karen.clarke@transwestern.com

**Lily Austin**

(713)-244-4445

lily.austin@transwestern.com

The information provided herein was obtained from sources believed reliable; however, Transwestern makes no guarantees, warranties or representations as to the completeness or accuracy thereof. The presentation of this property is submitted subject to errors, omissions, change of price or conditions, prior sale or lease, or withdrawal without notice. Copyright © 2025 Transwestern.

# Northeast Executive Center

12015 E. 46<sup>th</sup> Ave, Denver CO 80239



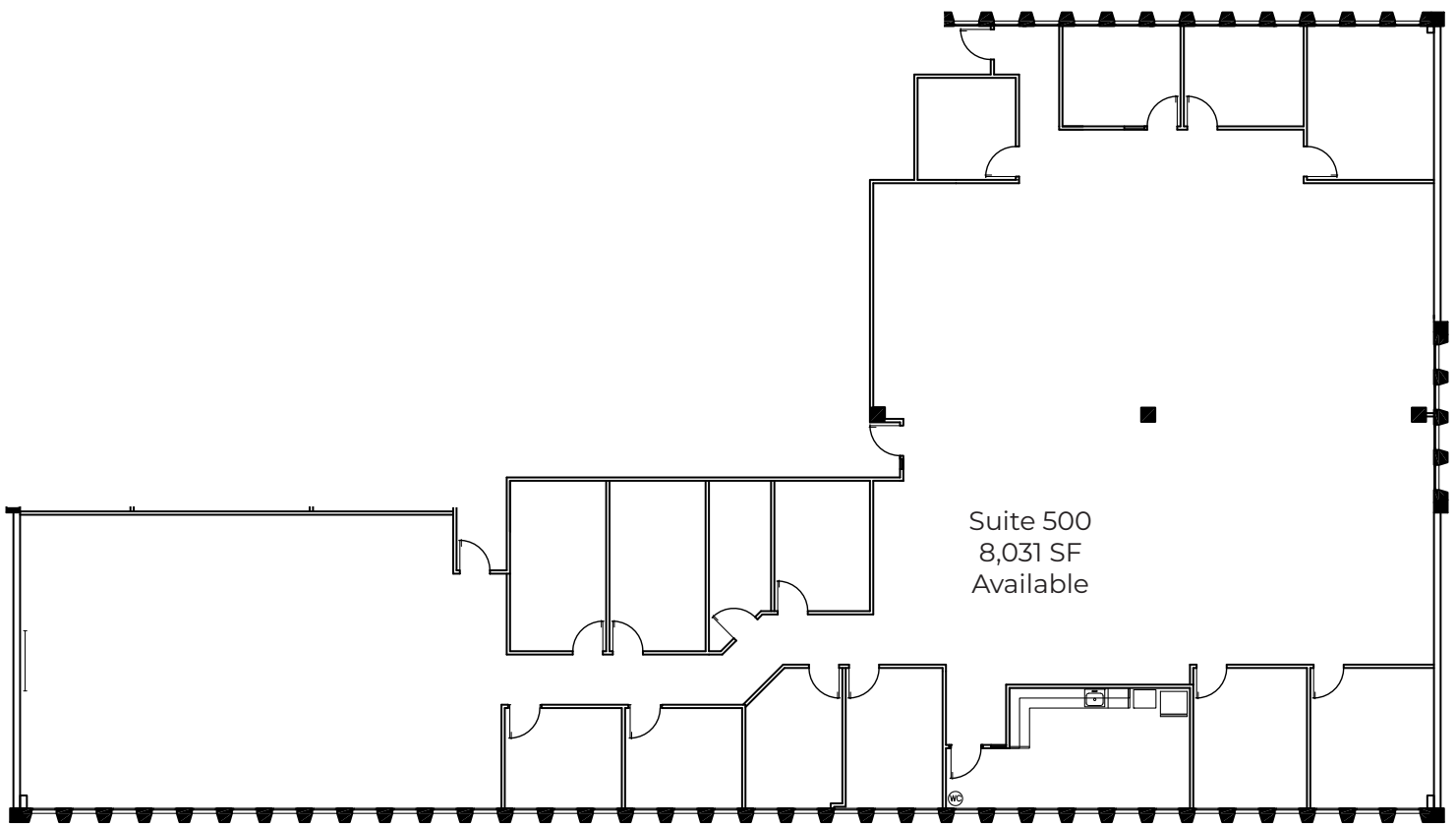
TRANSWESTERN

REAL ESTATE  
SERVICES

## Floor Plan:

Suite 500 | 8,031 SF

360° Matterport  
Virtual Tour



## Leasing Information:

**Karen Clarke**

(720) 891-6000

karen.clarke@transwestern.com

**Lily Austin**

(713)-244-4445

lily.austin@transwestern.com

The information provided herein was obtained from sources believed reliable; however, Transwestern makes no guarantees, warranties or representations as to the completeness or accuracy thereof. The presentation of this property is submitted subject to errors, omissions, change of price or conditions, prior sale or lease, or withdrawal without notice. Copyright © 2025 Transwestern.