

326 E. FOURTH STREET
SUITE #150
ROYAL OAK, MICHIGAN



**SIGNATURE
ASSOCIATES**
KNOW SIGNATURE | KNOW RESULTS

OFFICE FOR LEASE
3,670 Square Feet Available

FURNISHED / PLUG 'N PLAY



PROPERTY FEATURES

- 3,670 square feet available
- Open office with glass front
- Includes kitchen, open ceilings in most of space and extensive use of interior glass
- Fully renovated and highly upgraded building in a walkable part of Royal Oak
- Two blocks East of Main Street across from Motor City Gas
- Street parking, municipal decks and lots available
- Permit parking in nearby lots
- Furniture is available or can be removed
- Lease Rate: \$32.00/sq. ft. G + E + J



For more information, please contact:

DAVE MILLER
(248) 948 4183
dmiller@signatureassociates.com

PETER VANDERKAAY
(248) 359 3837
pvanderkaay@signatureassociates.com

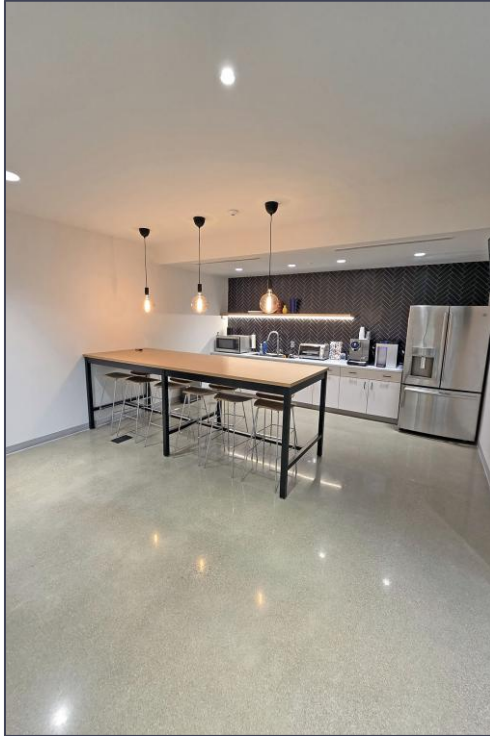
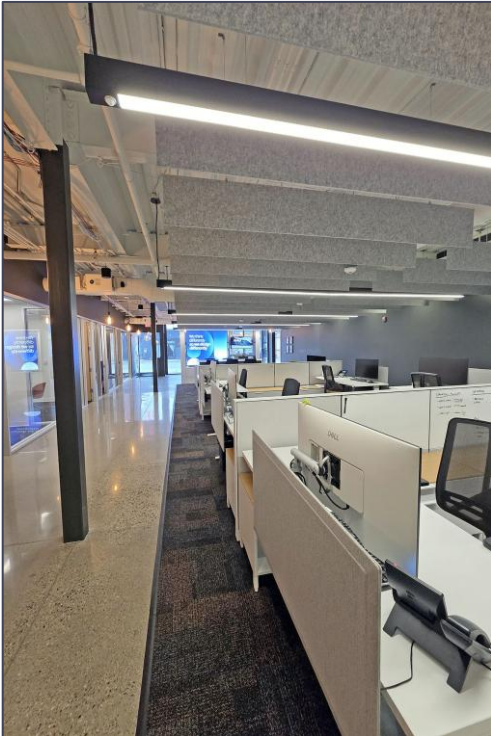
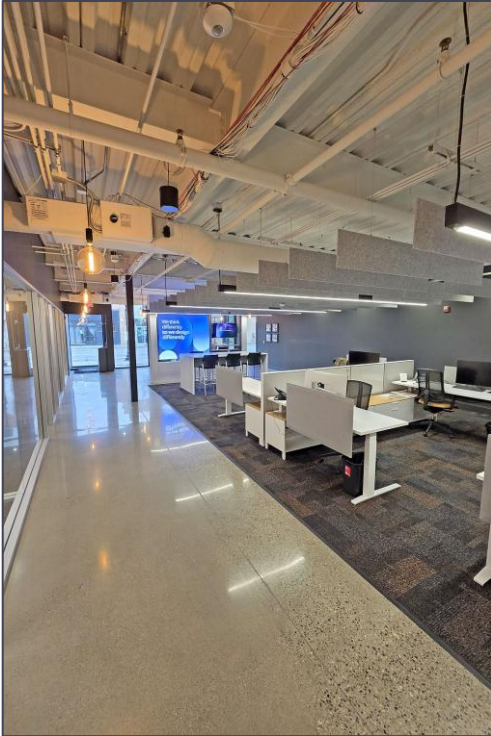
SIGNATURE ASSOCIATES
One Towne Square, Suite 1200
Southfield, MI 48076
www.signatureassociates.com

326 E. Fourth Street – Royal Oak, Michigan

Office For Lease

3,670
Square Feet
AVAILABLE

Interior Photos



For more information, please contact:

DAVE MILLER
(248) 948 4183
dmiller@signatureassociates.com

PETER VANDERKAAY
(248) 359 3837
pvanderkaay@signatureassociates.com

SIGNATURE ASSOCIATES
One Towne Square, Suite 1200
Southfield, MI 48076
www.signatureassociates.com

Information is subject to verification and no liability for errors or omissions is assumed. Price is subject to change and listing withdrawal.

326 E. Fourth Street – Royal Oak, Michigan

Office For Lease

3,670
Square Feet
AVAILABLE

Floor Plan

4TH STREET



For more information, please contact:

DAVE MILLER
(248) 948 4183
dmiller@signatureassociates.com

PETER VANDERKAAY
(248) 359 3837
pvanderkaay@signatureassociates.com

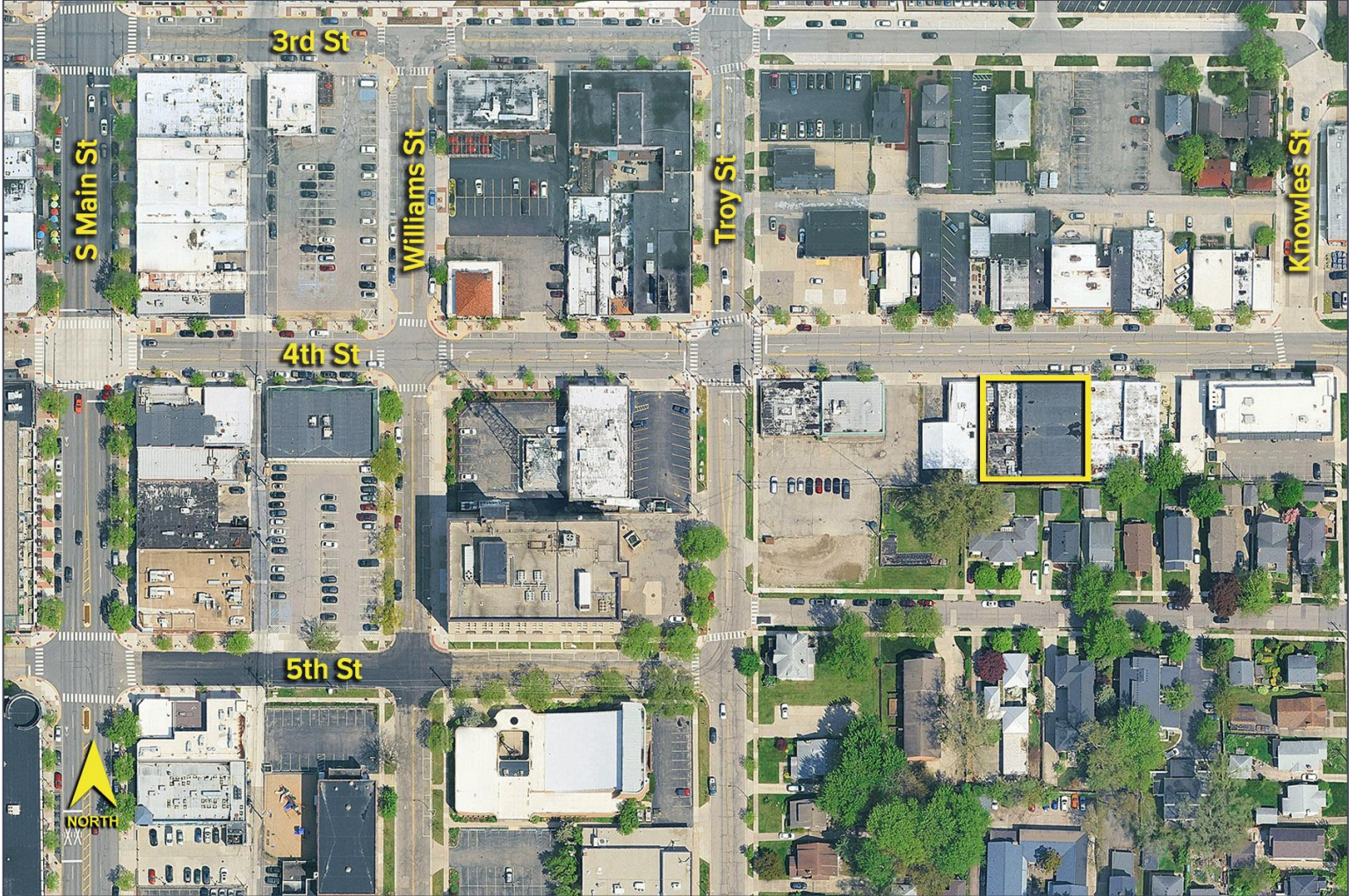
SIGNATURE ASSOCIATES
One Towne Square, Suite 1200
Southfield, MI 48076
www.signatureassociates.com

326 E. Fourth Street – Royal Oak, Michigan

Office For Lease

3,670
Square Feet
AVAILABLE

Aerial



For more information, please contact:

DAVE MILLER
(248) 948 4183
dmiller@signatureassociates.com

PETER VANDERKAAY
(248) 359 3837
pvanderkaay@signatureassociates.com

SIGNATURE ASSOCIATES
One Towne Square, Suite 1200
Southfield, MI 48076
www.signatureassociates.com

Information is subject to verification and no liability for errors or omissions is assumed. Price is subject to change and listing withdrawal.