



For Lease

Steve Hooker
work: 435.649.1129
cell/text: 801.509.3560

Clayton Building
1795 Sidewinder Drive
Park City, UT 84098



Second Floor Office Space

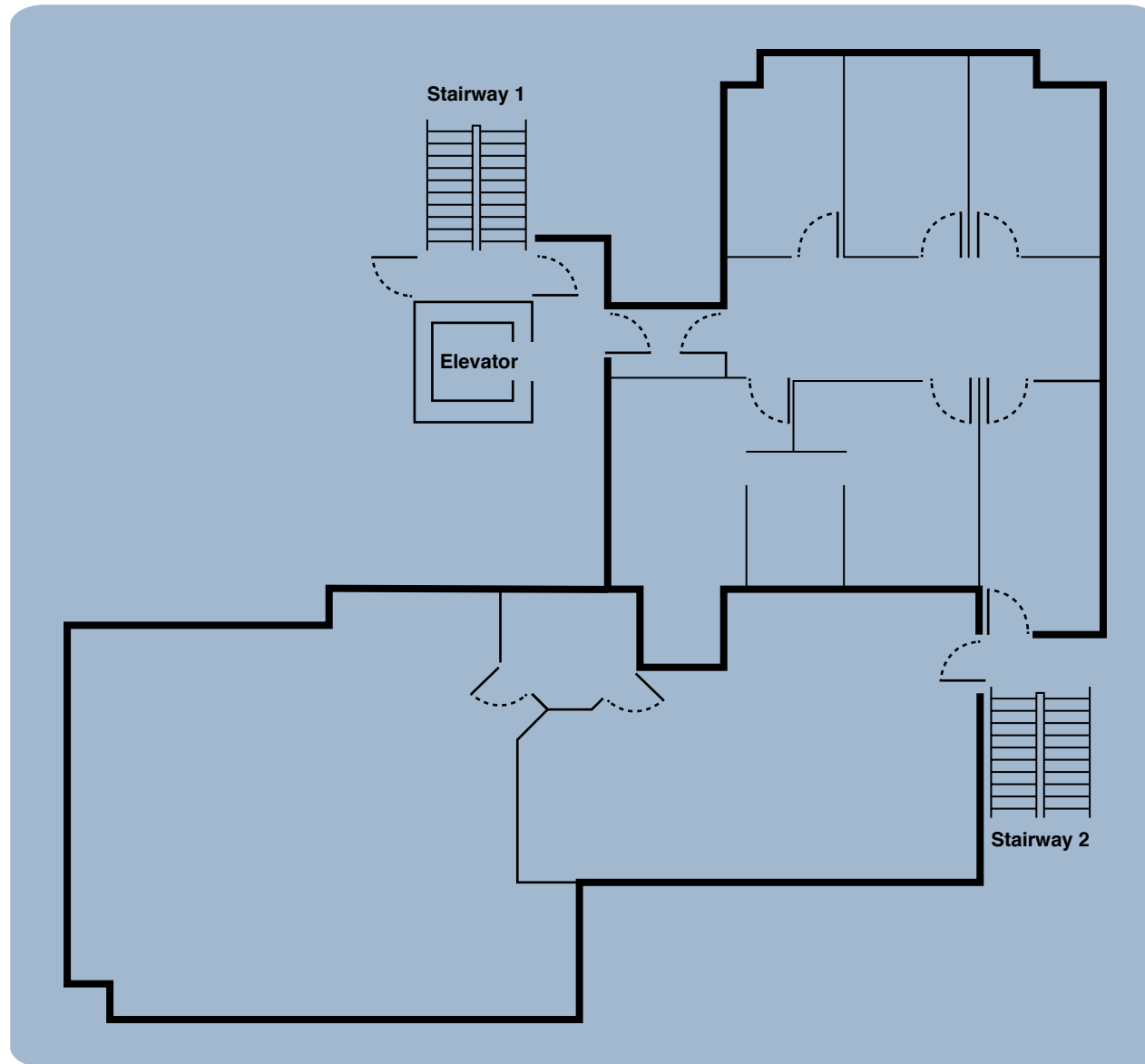
Property Highlights

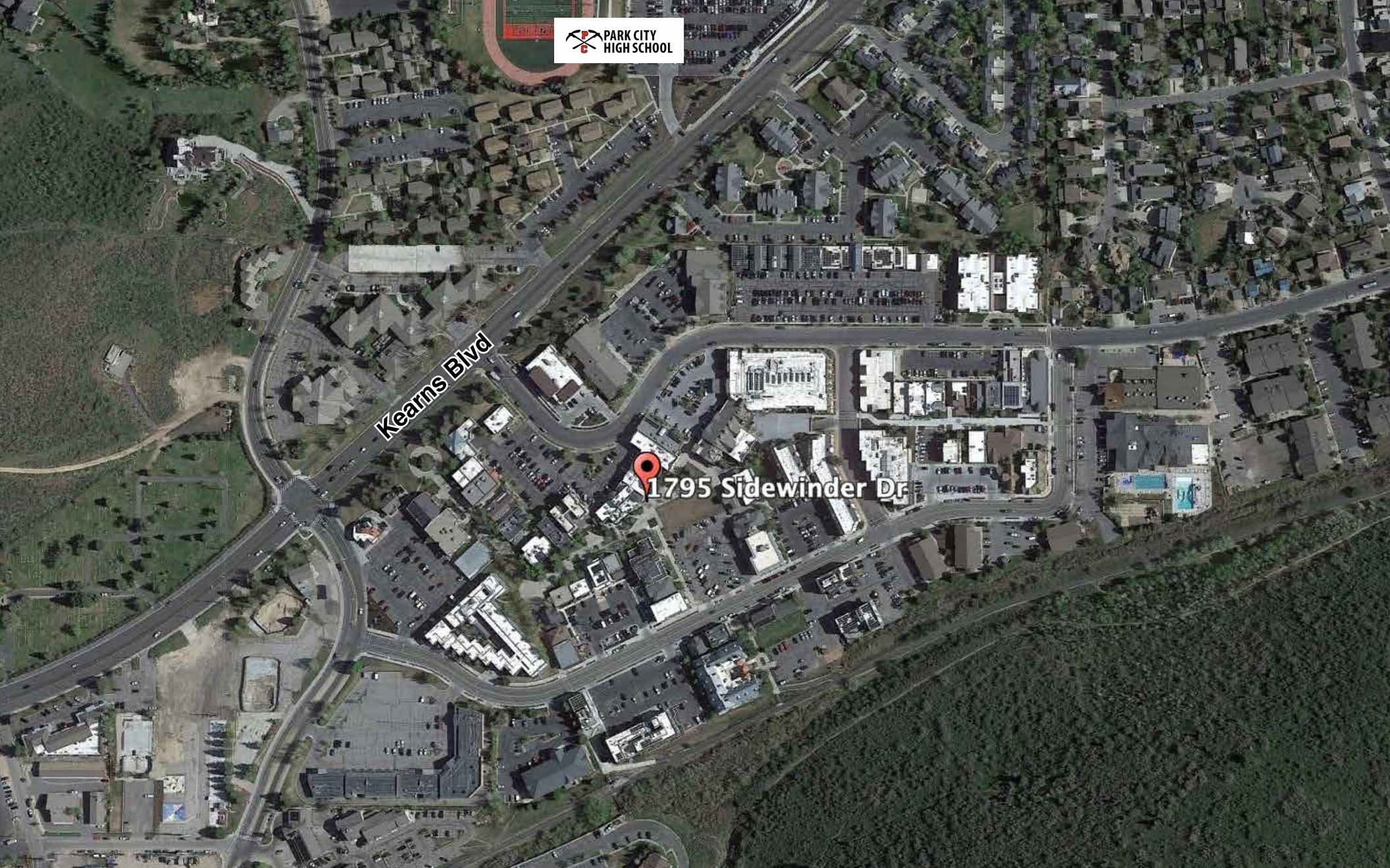
- Lease rate: \$26-30 NNN
- New remodel, custom layout
- Prospector office building
- Close to all Park City amenities
- On bus route
- 2,284 SF available
- Excellent Natural Lighting
- Sublease or Direct
- Open floorplan



2750 Rasmussen Road, Suite 100, Park City, UT
Steve Hooker | 435.649.1129 | shooker@acme-cre.com
acme commercial real estate

1795 Sidewinder Drive





PARK CITY
HIGH SCHOOL

Kearns Blvd

1795 Sidewinder Dr



2750 Rasmussen Road, Suite 100, Park City, UT
Steve Hooker | 435.649.1129 | shooker@acme-cre.com
acme commercial real estate

Acme Commercial Real Estate Copyright 2023. No warranty or representation, express or implied, is made to the accuracy or completeness of the information contained herein, and same is submitted subject to errors, omissions, change of price, rental or other conditions, withdrawal without notice, and to any special listing conditions imposed by the property owner(s). As applicable, we make no representation as to the condition of the property (or properties) in question.