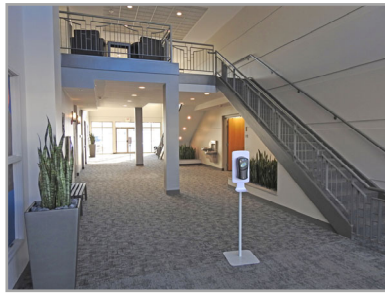


Goldridge Building

3021 Harbor Lane North | Plymouth, MN 55447



- Immediate access to I-494 and Hwy 55.
Easy access to I-394 and Hwy 169.
- High visibility on Hwy 55
- Controlled access entry system
- Touch screen building directory
- Located next to developing area with medical use buildings.
- Close proximity to restaurants, hotels, FedEx, Starbucks, Caribou Coffee, Life Time Fitness, and Orangetheory Fitness.
- 2 Miles from Parkers Lake and the Luce Line Trail.

OFFICE SPACE FOR LEASE

Space Available: 1,762- 3,672 RSF

NNN Rate: \$15/RSF

2026 OPEX & RE Taxes: \$11.80/RSF

Operating Expenses: \$7.61/RSF

RE Taxes: \$4.19/RSF

Jeff Houg

D: 952-300-9545

M: 612-889-2242

jhoug@shcre.com

www.shcre.com



Goldridge Building

3021 Harbor Lane North | Plymouth, MN 55447

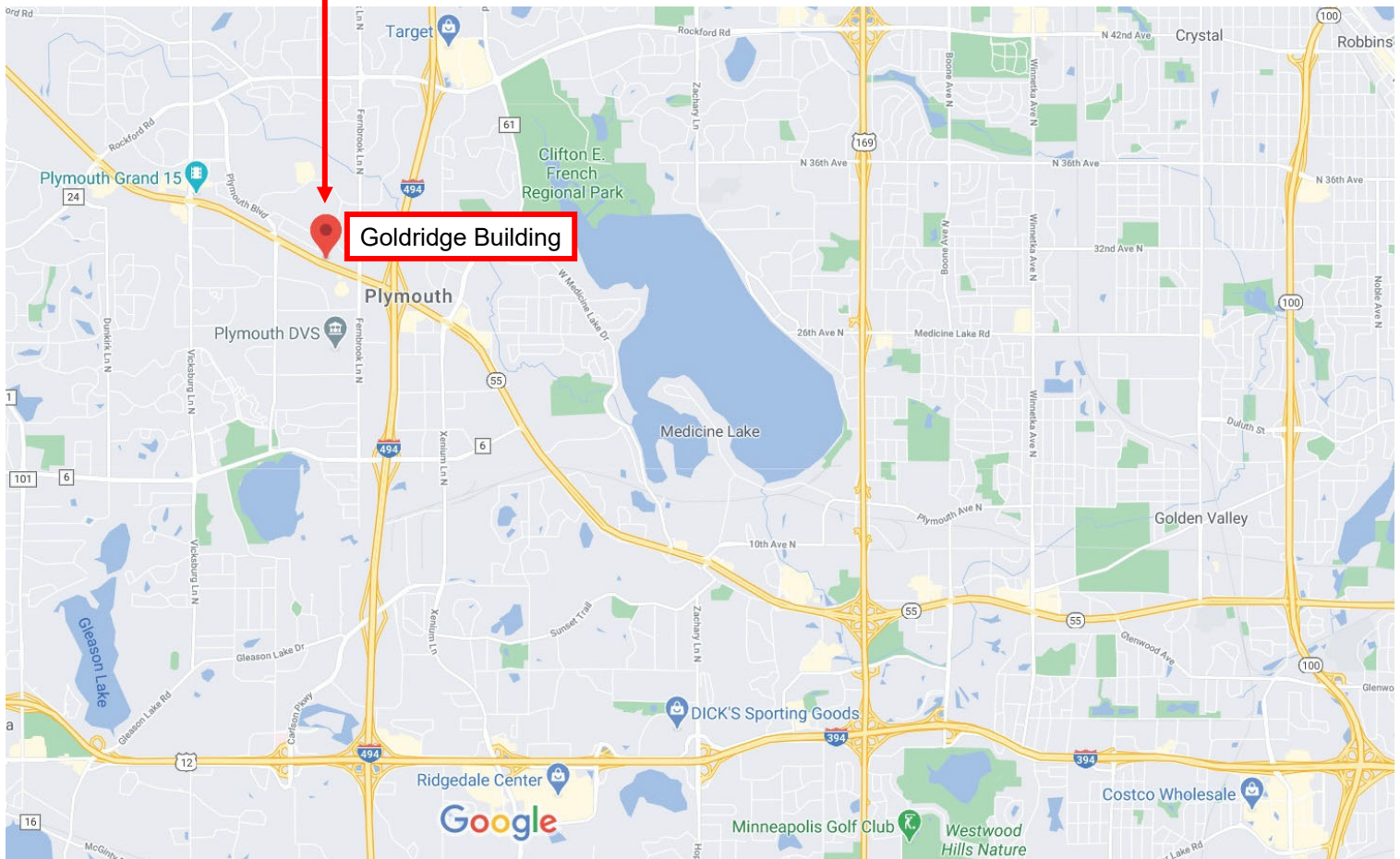
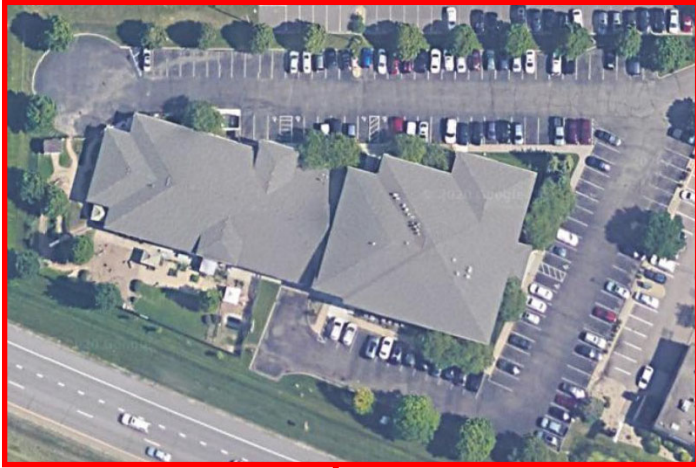
Jeff Houg

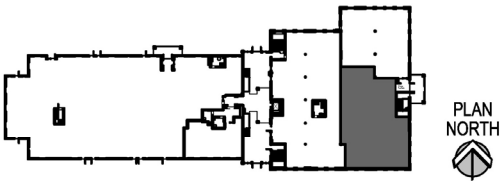
D: 952-300-9545

M: 612-889-2242

jhoug@shcre.com

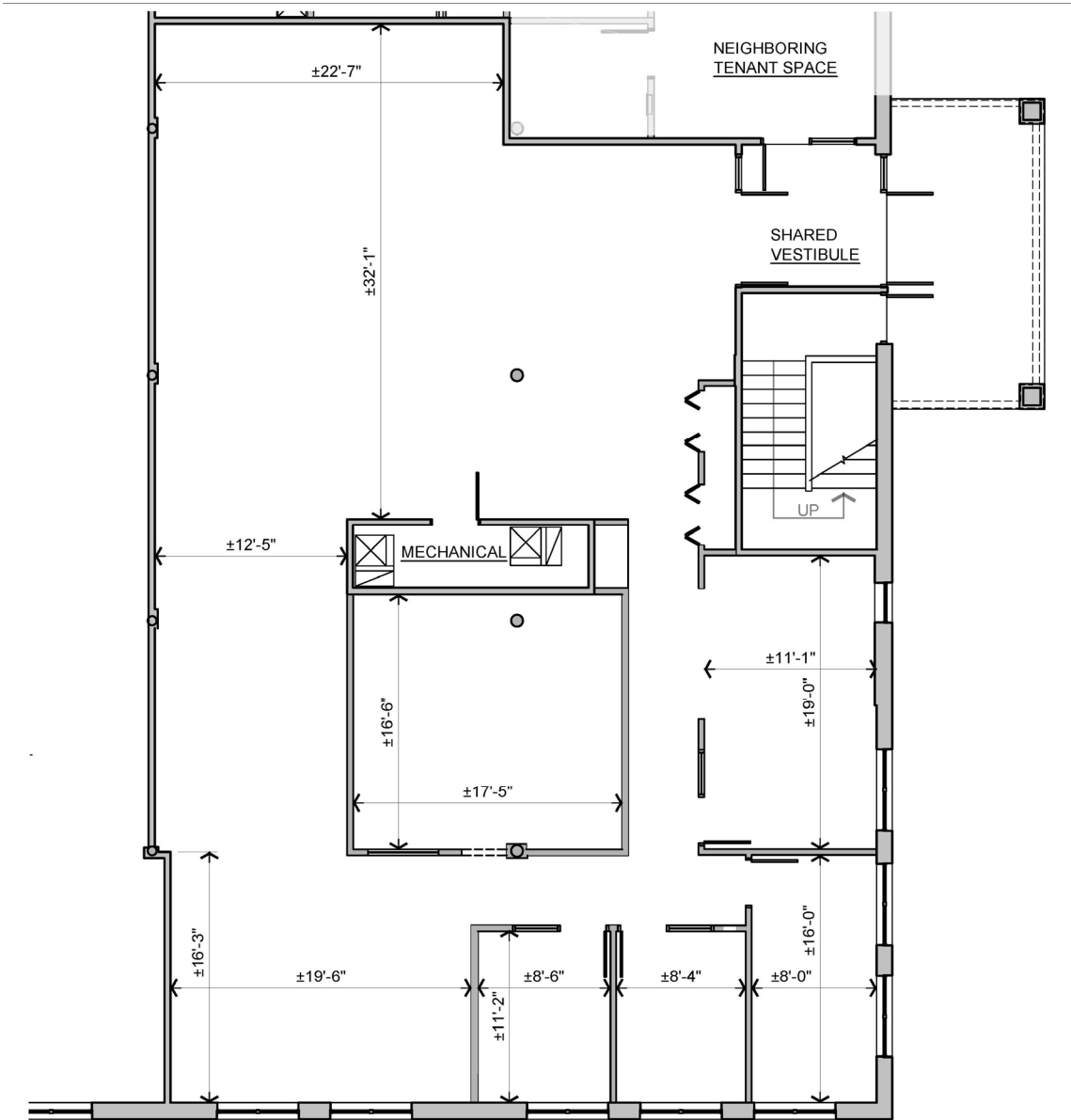
www.shcre.com





FIRST FLOOR REFERENCE MAP
Scale: 1" = 100'-0"

Suite 103 - 3,388 RSF with semi private entrance



Goldridge Building

3021 Harbor Lane North | Plymouth, MN 55447

Jeff Houg

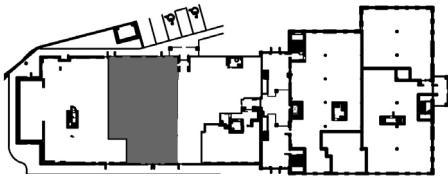
D: 952-300-9545

M: 612-889-2242

jhoug@shcre.com

www.shcre.com






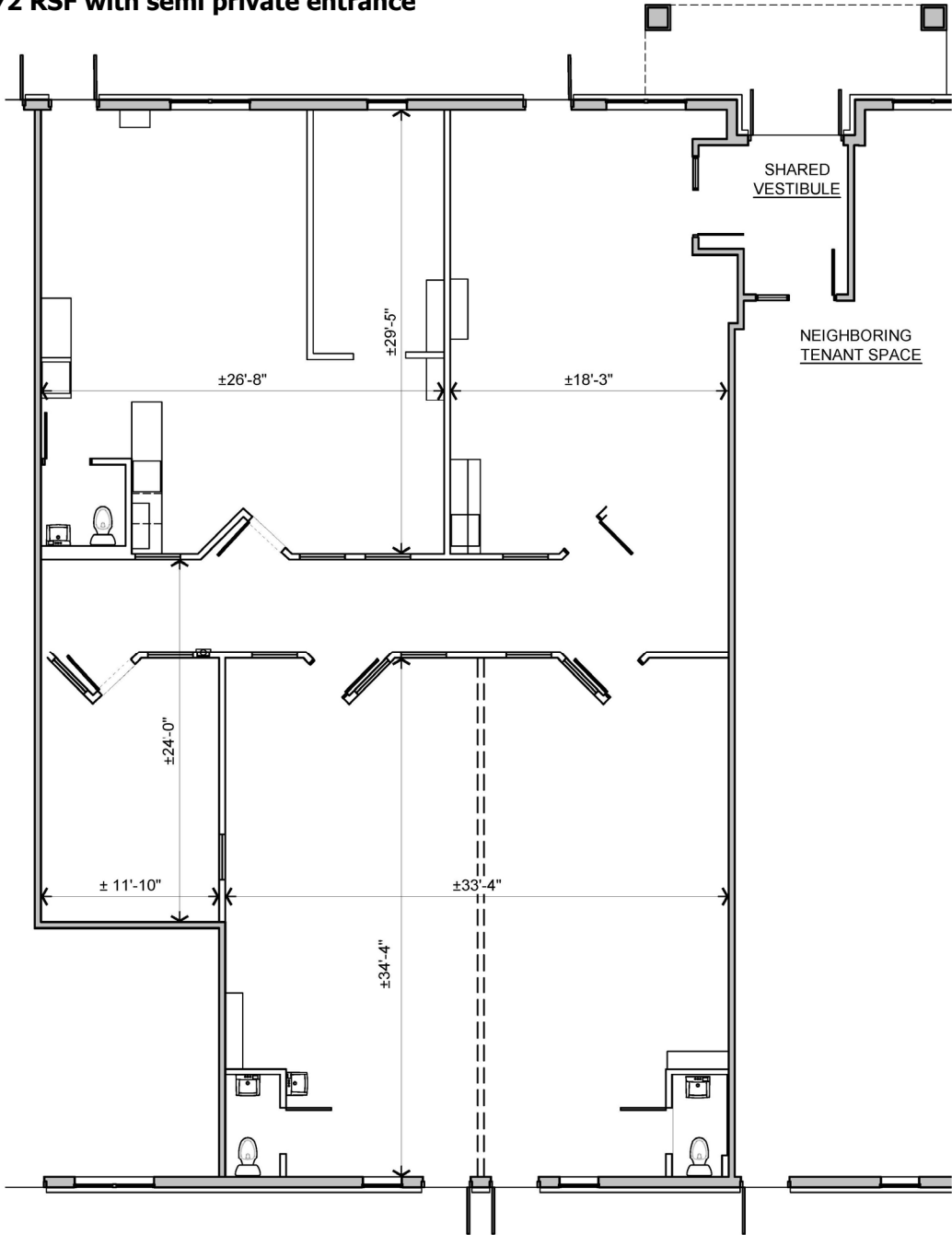
FIRST FLOOR REFERENCE MAP

Scale: 1" = 100'-0"

PLAN NORTH



Suite 115 - 3,672 RSF with semi private entrance



Goldridge Building

3021 Harbor Lane North | Plymouth, MN 55447

Jeff Houg

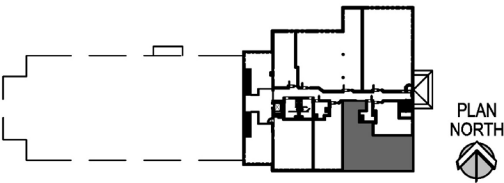
D: 952-300-9545

M: 612-889-2242

jhoug@shcre.com

www.shcre.com





SECOND FLOOR REFERENCE MAP

Scale: 1" = 100'-0"

Suite 209 - 1,762 RSF **Available June 1st

