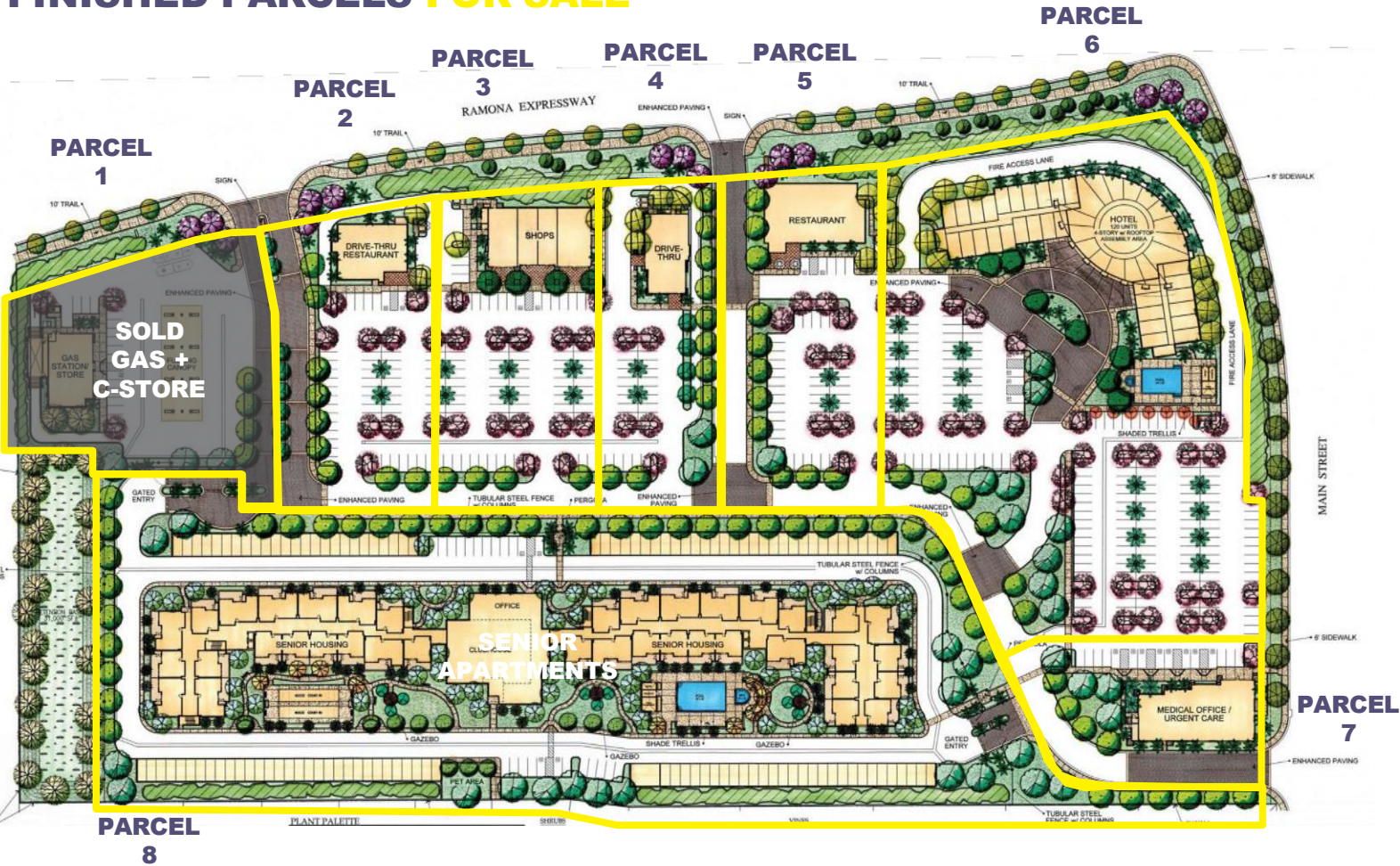


NEW DEVELOPMENT COMING SOON

KPC PROMENADE

NWC RAMONA EXPRESSWAY & MAIN STREET | SAN JACINTO, CA

FINISHED PARCELS FOR SALE



PARCEL NUMBER	SIZE	AVAILABILITY
Parcel 1	1.90 Acres Gross	SOLD - Gas & C-Store
Parcel 2	1.59 Acres Gross	Available
Parcel 3	1.64 Acres Gross	Available
Parcel 4	1.25 Acres Gross	Available
Parcel 5	1.70 Acres Gross	Available
Parcel 6	5.54 Acres Gross	Available
Parcel 7	0.94 Acres Gross	Available
Parcel 8	7.03 Acres Gross	SENIOR APARTMENTS



Rosenthal & Excell
Commercial Real Estate Services, Inc.

1600 East Florida Ave., Suite 110
Hemet, CA 92544
Office: (951) 658-2559 • Fax: (951) 658-7690
hrge@rosenthalexcell.com

For More Information Contact:

Howard B. Rosenthal

or Guy W. Excell

(951) 658-2559

DRE #01138381

NEW DEVELOPMENT COMING SOON

KPC PROMENADE

NWC RAMONA EXPRESSWAY & MAIN STREET | SAN JACINTO, CA

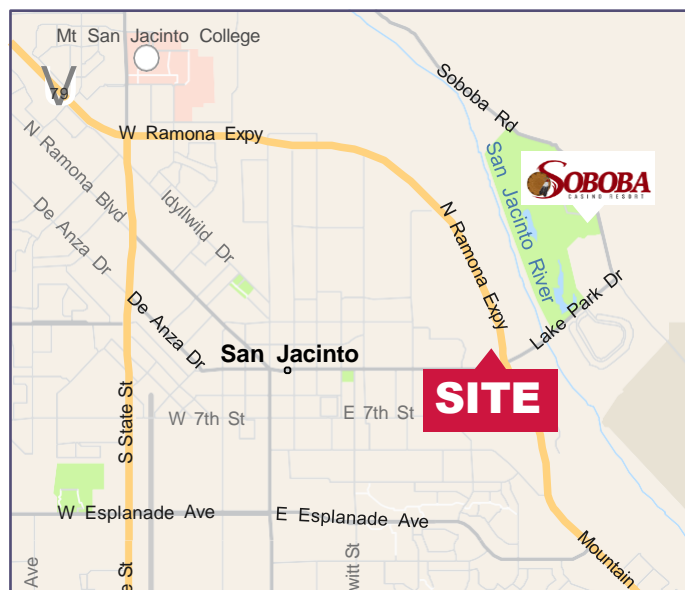


FEATURES:

- Mixed Use Development
- New Shopping Center Parcels for Sale
- Located on the North West intersection from the Soboba Casino Resort and Soboba Springs Golf Course

DEMOGRAPHICS	1 MILE	3 MILE	5 MILE
2024 Population:	8,989	70,404	157,482
Daytime Population:	4,417	36,149	83,377
Avg. Household Income:	\$79,584	\$81,678	\$83,634

Source: Regis



TRAFFIC COUNTS

15,995 CPD

On Ramona Expressway

Source: Regis

15,897 CPD

On Main Street



Rosenthal & Excell
Commercial Real Estate Services, Inc.

1600 East Florida Ave., Suite 110

Hemet, CA 92544

Office: (951) 658-2559 • Fax: (951) 658-7690

hrge@rosenthalexcell.com

For More Information Contact:

Howard B. Rosenthal

or Guy W. Excell

(951) 658-2559

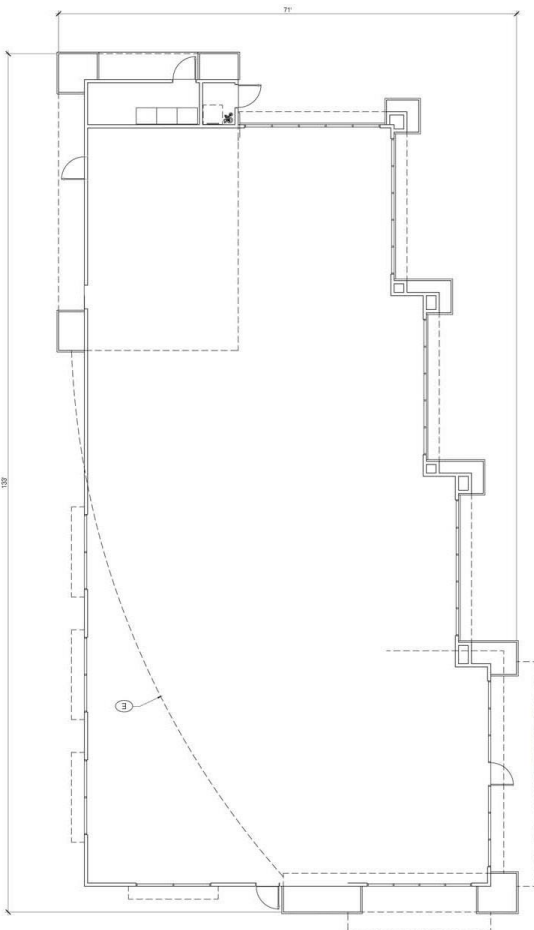
DRE #01138381

NEW DEVELOPMENT COMING SOON

KPC PROMENADE

NWC RAMONA EXPRESSWAY & MAIN STREET | SAN JACINTO, CA

PROPOSED FLOORPLAN & ELEVATIONS



FLOOR PLAN



SOUTH (MAIN STREET) ELEVATION



WEST ELEVATION



NORTH ELEVATION



EAST ELEVATION



Rosenthal & Excell
Commercial Real Estate Services, Inc.

1600 East Florida Ave., Suite 110

Hemet, CA 92544

Office: (951) 658-2559 • Fax: (951) 658-7690

hrge@rosenthalexcell.com

For More Information Contact:

Howard B. Rosenthal

or Guy W. Excell

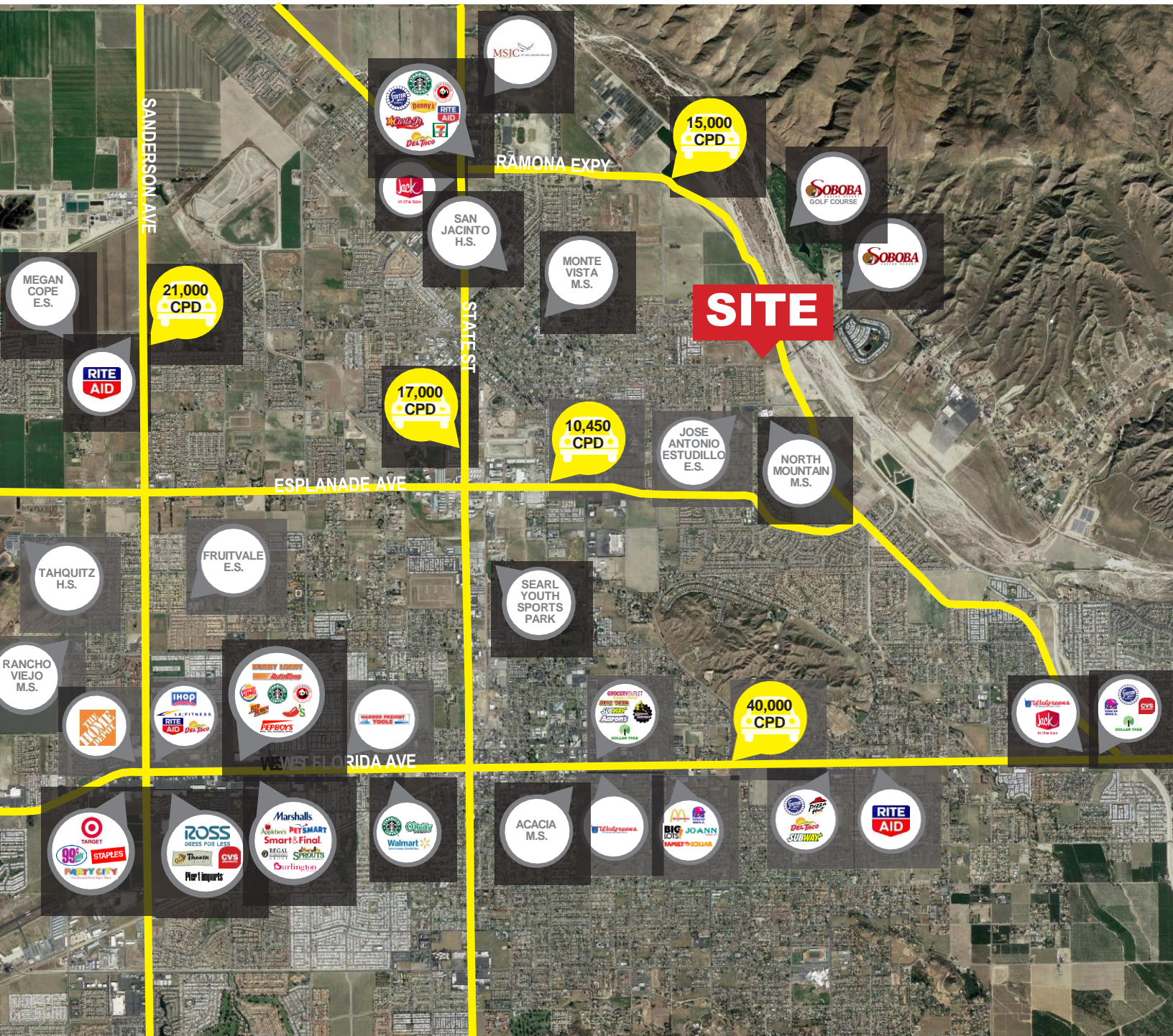
(951) 658-2559

DRE #01138381

NEW DEVELOPMENT COMING SOON

KPC PROMENADE

NWC RAMONA EXPRESSWAY & MAIN STREET | SAN JACINTO, CA



Rosenthal & Excell
Commercial Real Estate Services, Inc.

1600 East Florida Ave., Suite 110

Hemet, CA 92544

Office: (951) 658-2559 • Fax: (951) 658-7690

hrg@rosenthalexcell.com

For More Information Contact:

Howard B. Rosenthal

or Guy W. Excell

(951) 658-2559

DRE #01138381