

671

WILLOW PASS RD | PITTSBURG, CA 94565

OFFICE/WAREHOUSE
AVAILABLE



ÀCRE
— PARTNERS

THG
THE HAGAR GROUP

TABLE OF CONTENTS

4

PROPERTY OVERVIEW

5

PROPERTY PHOTOS

6

MAPS & AERIALS

8

LOCATION OVERVIEW

9

DEMOGRAPHICS

DOMINIC DOUGLAS | ADVISOR

DRE# 02168523

925-852-1766

DDouglas@AiCREPartners.com

MATT HAGAR, SIOR, MSRE, CCIM | CO-FOUNDER & MANAGING PARTNER

DRE# 01896662

925-380-9006

MHagar@AiCREPartners.com



1981 N Broadway, Suite 250
Walnut Creek, CA 94596
www.AiCREPartners.com



1

PROPERTY OVERVIEW

671

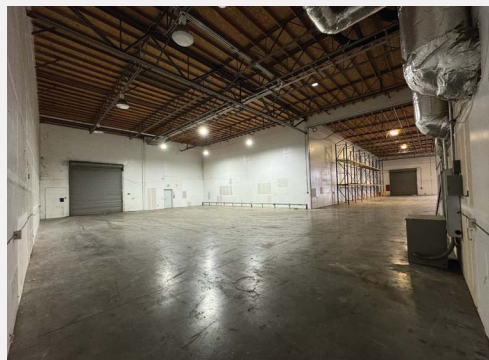
671

WILLOW PASS RD | PITTSBURG, CA 94565

LEASE AVAILABILITY

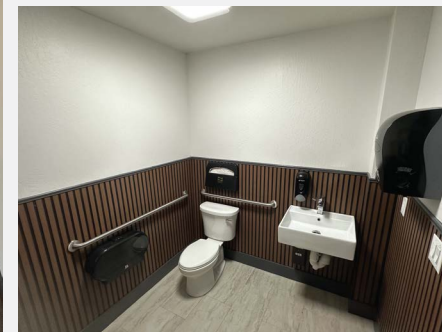
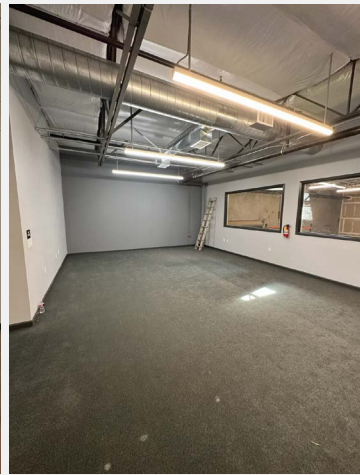
AiCRE is proud to offer the exclusive opportunity to lease 800-19,600 SF of office/warehouse space. Take advantage of SBA options and secure your business a permanent home for continued expansion.

**LEASE RATE
UPON REQUEST**



671

WILLOW PASS RD | PITTSBURG, CA 94565



5

OFFICE/WAREHOUSE AVAILABLE

671

Somersville
Towne Center

Los Medanos
College



Pittsburg Center
BART Station

High
School
Village

City
Park

Downtown
Pittsburg

Mariner
Park

Sacramento
River

Marina
Channel

6

OFFICE/WAREHOUSE AVAILABLE

An aerial photograph of a city, likely Pittsburgh, CA, with a red overlay. The image shows a mix of residential and commercial buildings, parking lots, and a large industrial building on the left. A large white number '2' is centered over the image.

2

LOCATION OVERVIEW

PITTSBURG, CA
DEMOGRAPHICS

671

671

WILLOW PASS RD | PITTSBURG, CA 94565



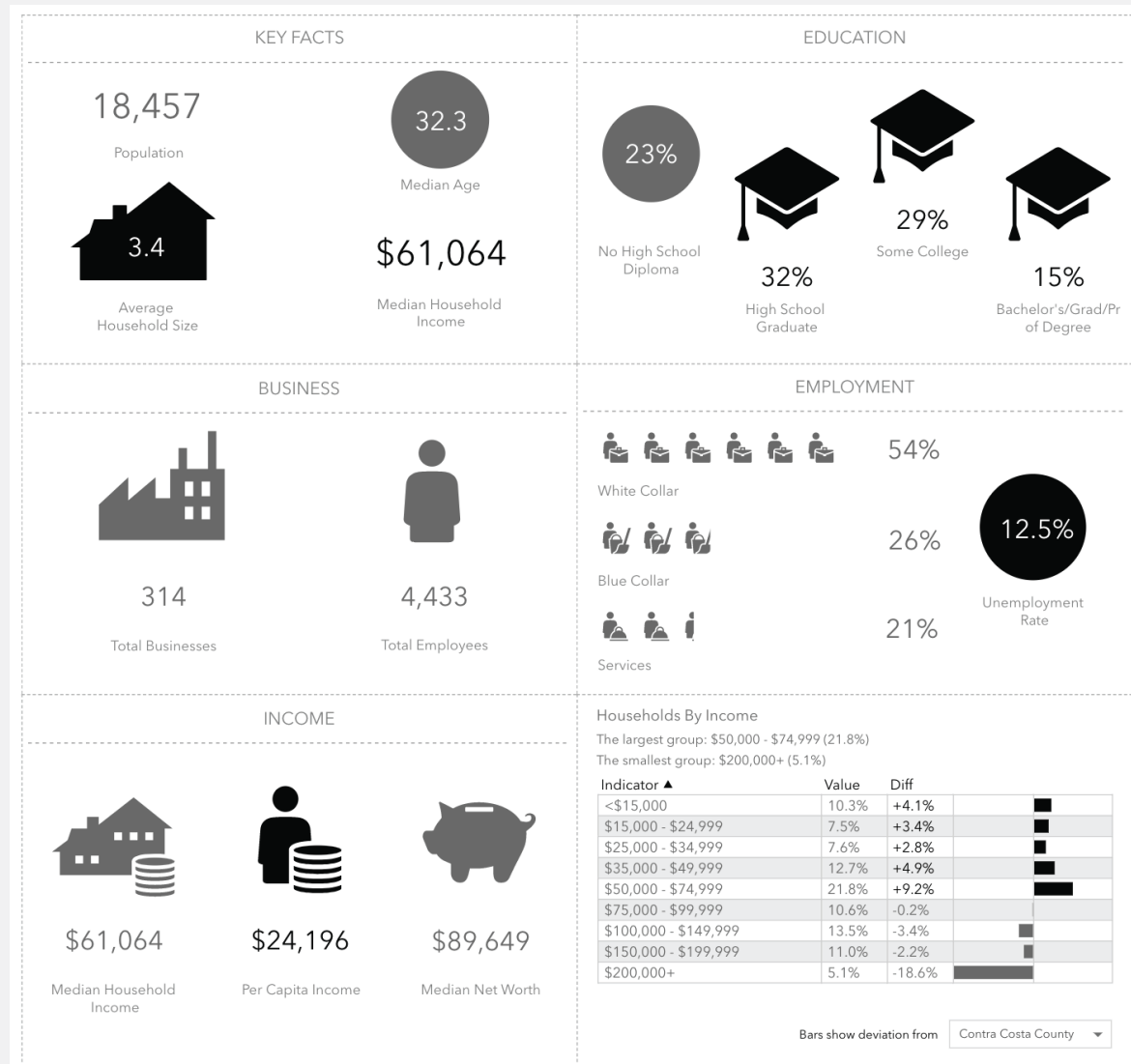
Pittsburg is a city in Contra Costa County, California, United States. It is an industrial suburb located on the southern shore of the Suisun Bay in the East Bay region of the San Francisco Bay Area, and is part of the Sacramento–San Joaquin River Delta area.

The city has an extensive history of coal mining and industrial development since the late 1800s, with USS-POSCO Industries (a joint venture between US Steel and POSCO of South Korea) and Dow Chemical Company maintaining substantial plants in Pittsburg.

On June 15, 2019, the East Bay Times reported that the Canadian company, Bombardier, Inc. is moving into a former warehouse in Pittsburg, where it will produce train cars destined for its Pacific Coast customers. Bombardier is one of the most active suppliers of train cars, and officials believe that the Pittsburg will substantially improve its competitive position.

671

WILLOW PASS RD | PITTSBURG, CA 94565



This infographic contains data provided by Esri, Esri and Data Axle. The vintage of the data is 2021, 2026.

© 2021 Esri



671

WILLOW PASS RD | PITTSBURG, CA 94565

DOMINIC DOUGLAS | ADVISOR

DRE# 02168523

925-852-1766

DDouglas@AiCREPartners.com

**MATT HAGAR, SIOR, MSRE, CCIM |
CO-FOUNDER & MANAGING PARTNER**

DRE# 01896662

925-380-9006

MHagar@AiCREPartners.com

1981 N Broadway, Suite 250

Walnut Creek, CA 94596

www.AiCREPartners.com

ÀCRE
— PARTNERS

THG
THE HAGAR GROUP