



1066 W. 4th Street, Suite 202-B
Winston-Salem, NC 27101

FOR LEASE Premier Location

**2000 S. Hawthorne Road
Winston-Salem, NC**



- **3,758 +/- SF Office Space; .57 +/- AC**
- **\$20.00 Per SF**
- **Annual TICAM \$6.00 Per SF**
- **Excellent Proximity to Novant Health Forsyth Medical Center and Medical Park Hospital**
- **Convenient access to Silas Creek Parkway, Salem Parkway, and I-40**
- **Zoning: HB - Highway Business**
- **29 Parking Spaces**
- **Excellent Visibility**
- **Situated near Hanes Mall**

Contact

Philip Stewart

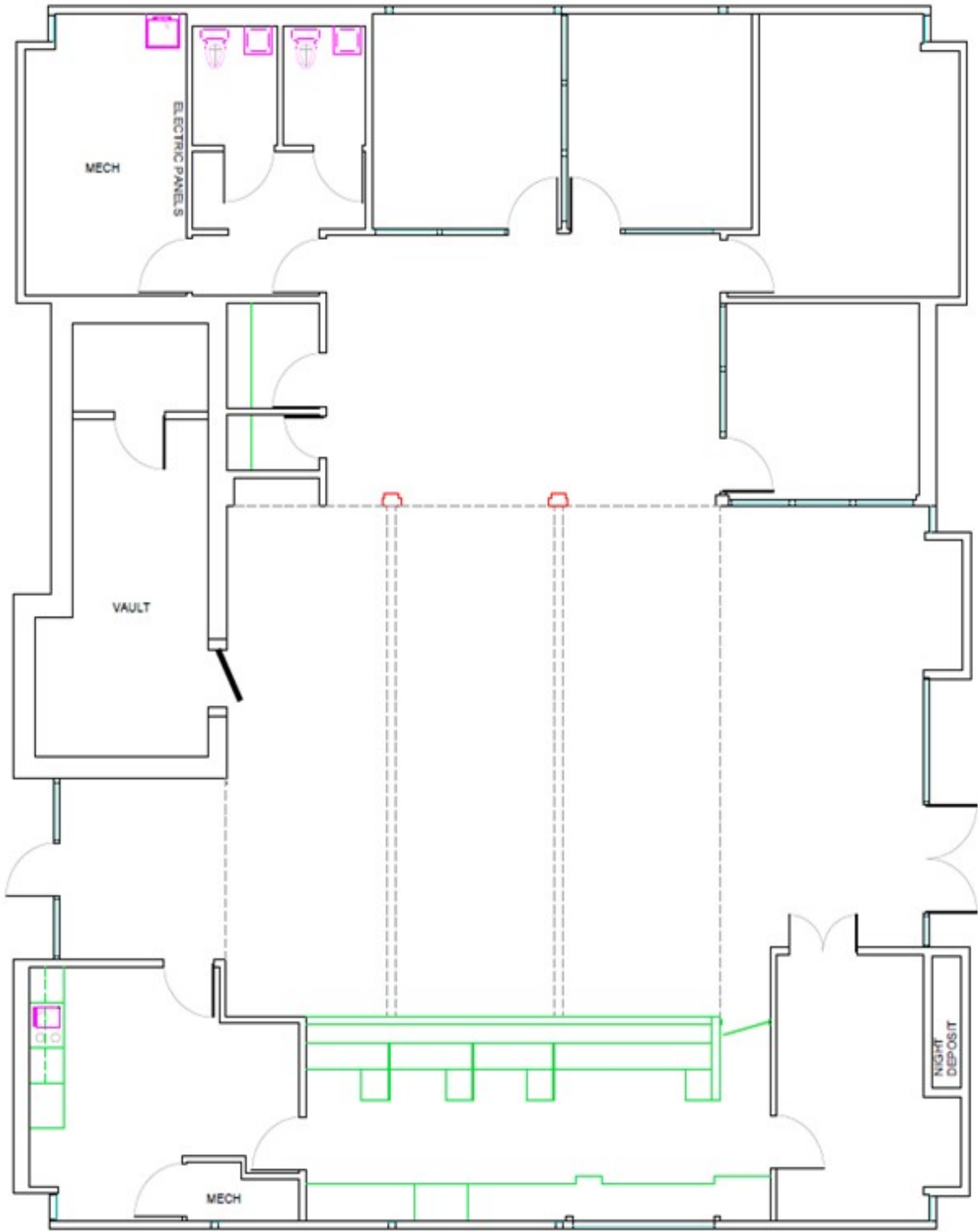
philip@pstewartrealty.com

Website

pstewartrealty.com

1066 W 4th Street, Ste. 202-B
Winston-Salem, NC 27101
Cell: 336-749-4154

All information deemed reliable but subject to verification.



2000 N HAWTHORNE RD WINSTON-SALEM, NC

3,758 BLDG GSF

2.11.25

