

DANVILLE FINANCIAL CENTER · TWO-STORY OFFICE BUILDING

Office Suites for Lease

KENNEDY WILSON

BROKERAGE

500 La Gonda Way, Danville, CA 94526

ADAM GOLDACKER

Senior Portfolio Manager

O: 925-957-4623 C: 312-446-7787

AGoldacker@kennedywilson.com

DRE #01974618

DANVILLE FINANCIAL CENTER • TWO-STORY OFFICE BUILDING

Office Suites for Lease

500 La Gonda Way, Danville, CA 94526

AVAILABLE

Suite 200: ±1,819 SF

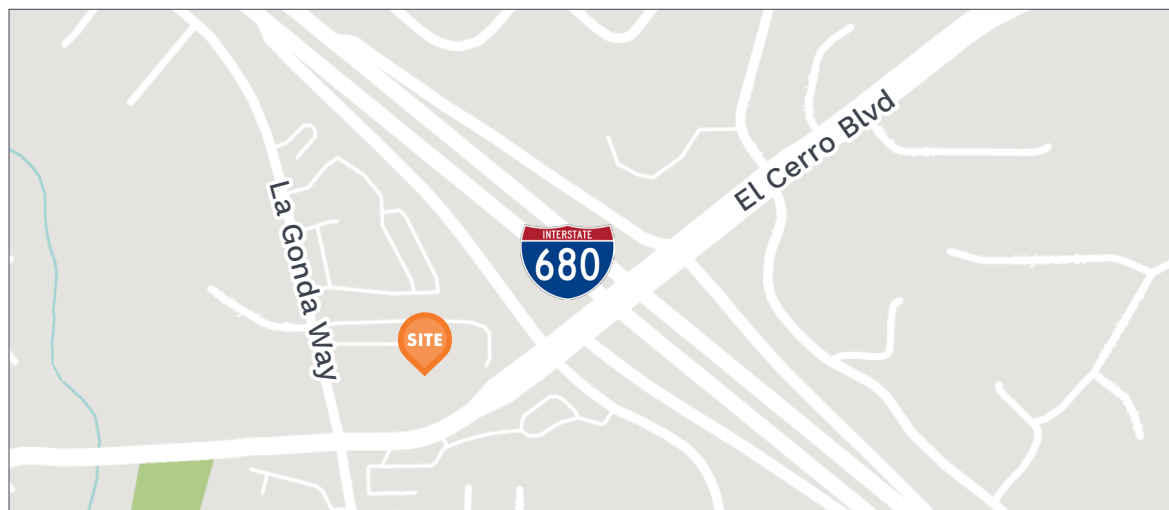
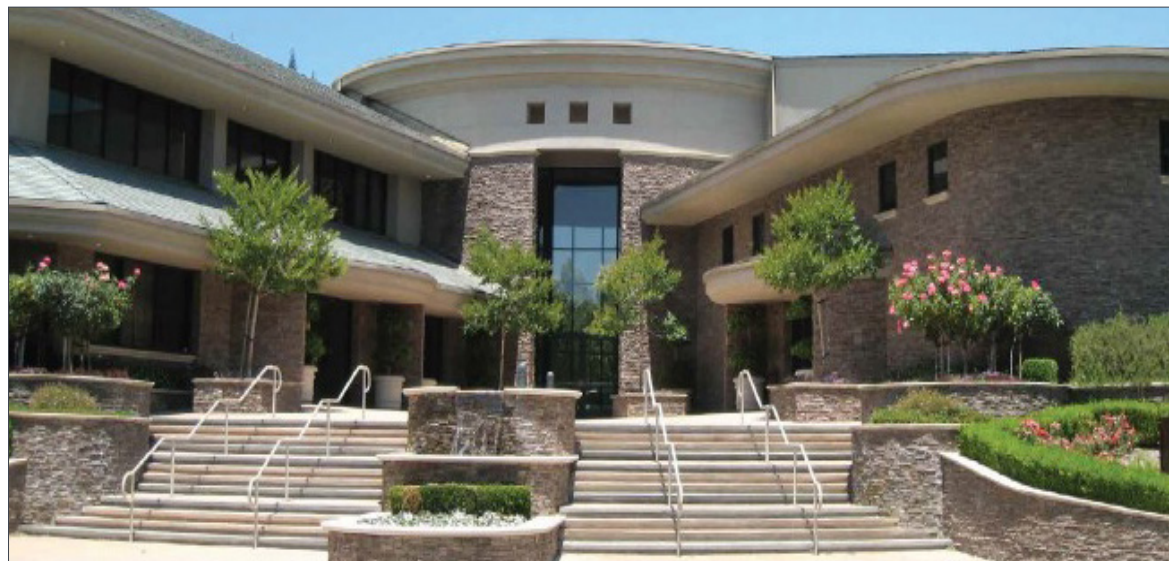
Suite 295: ±2,971 SF

Suite 290: ±2,110 SF

Rent: \$3.05 PSF/Mo., FSG

PROPERTY HIGHLIGHTS

- Convenient location off of I-680 at El Cerro Blvd
- Close proximity to downtown Danville
- Various building & site improvements underway including completely new HVAC
- Abundant parking, 4/1,000 SF parking ratio
- Mature landscaping
- On-site FedEx drop-box
- Great suite layouts available
- Suites 200 & 295 are contiguous



ADAM GOLDBACKER

Senior Portfolio Manager

O: 925-957-4623 C: 312-446-7787

AGoldacker@kennedywilson.com

DRE #01974618

Kennedy Wilson Brokerage | 1850 Gateway Blvd., Suite 130, Concord, CA 94520

Kennedy-Wilson Properties, Ltd. (Responsible Broker Identity, DRE #00659610) makes no warranty or representation as to the accuracy of the information contained herein. Terms of sale or lease and availability of the property are subject to change or withdrawal without notice.

DANVILLE FINANCIAL CENTER • TWO-STORY OFFICE BUILDING

Office Suites for Lease

500 La Gonda Way, Danville, CA 94526



Exterior Entrance



Suite 295



Suite 295



Suite 295

ADAM GOLDACKER
Senior Portfolio Manager
O: 925-957-4623 C: 312-446-7787
AGoldacker@kennedywilson.com
DRE #01974618

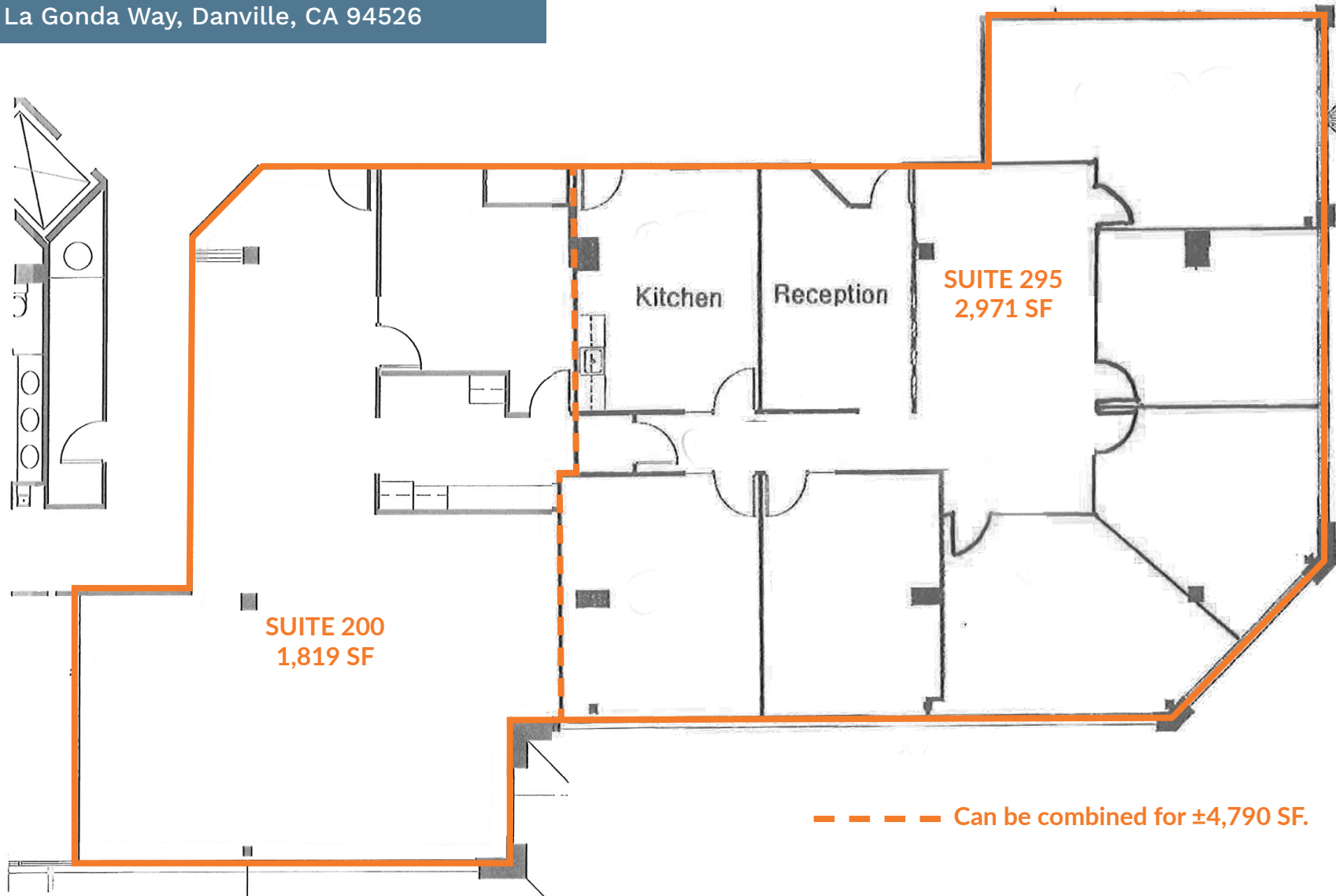
Kennedy Wilson Brokerage | 1850 Gateway Blvd., Suite 130, Concord, CA 94520

Kennedy-Wilson Properties, Ltd. (Responsible Broker Identity, DRE #00659610) makes no warranty or representation as to the accuracy of the information contained herein. Terms of sale or lease and availability of the property are subject to change or withdrawal without notice.

DANVILLE FINANCIAL CENTER • TWO-STORY OFFICE BUILDING

Office Suites for Lease

500 La Gonda Way, Danville, CA 94526



ADAM GOLDBACKER
Senior Portfolio Manager
O: 925-957-4623 C: 312-446-7787
AGoldacker@kennedywilson.com
DRE #01974618

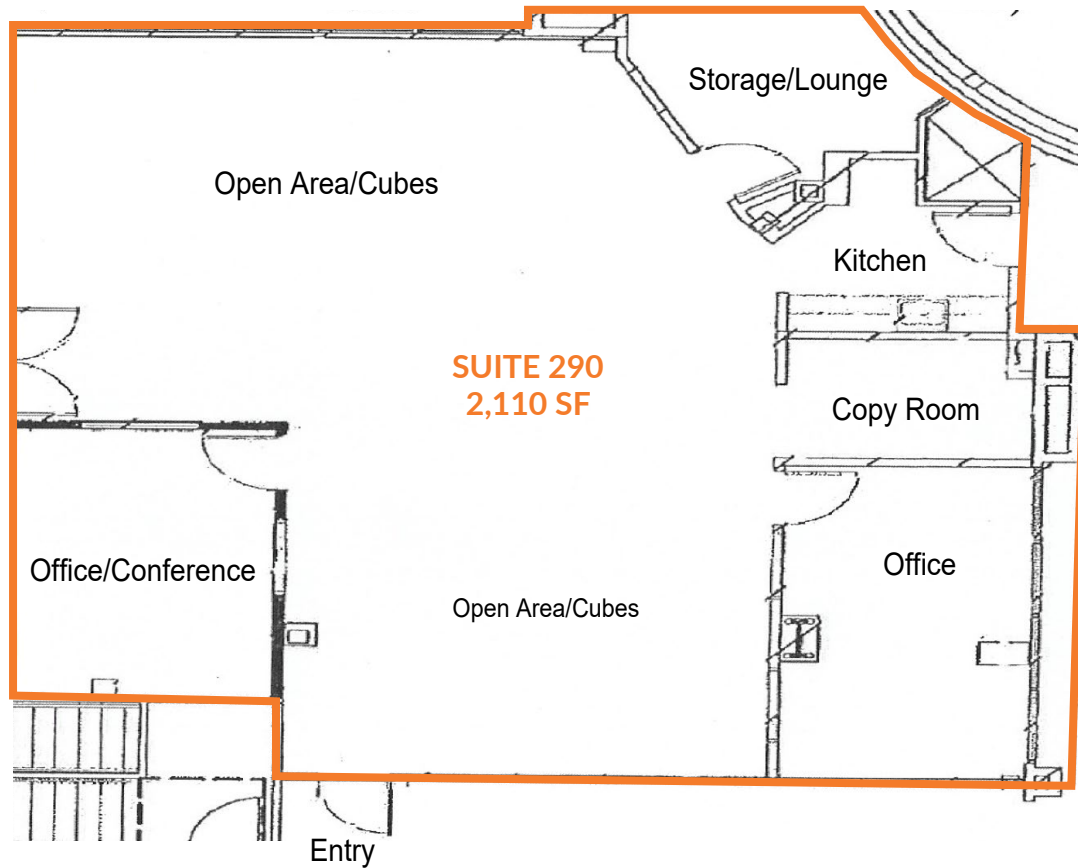
Kennedy Wilson Brokerage | 1850 Gateway Blvd., Suite 130, Concord, CA 94520

Kennedy-Wilson Properties, Ltd. (Responsible Broker Identity, DRE #00659610) makes no warranty or representation as to the accuracy of the information contained herein. Terms of sale or lease and availability of the property are subject to change or withdrawal without notice.

Office Suites for Lease

BROKERAGE

500 La Gonda Way, Danville, CA 94526



ADAM GOLDAKER
Senior Portfolio Manager
O: 925-957-4623 C: 312-446-7787
AGoldacker@kennedywilson.com
DRE #01974618

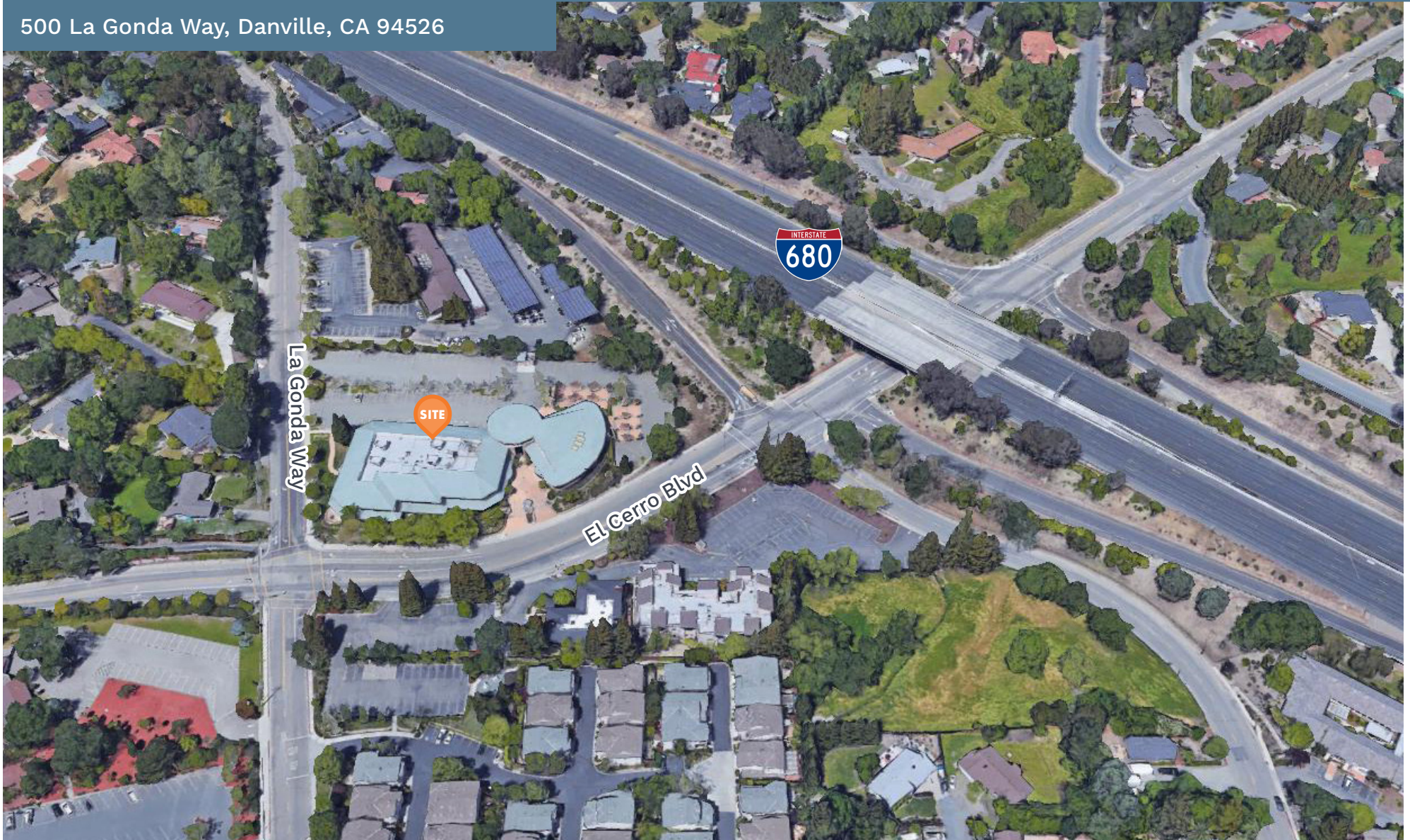
Kennedy Wilson Brokerage | 1850 Gateway Blvd., Suite 130, Concord, CA 94520

Kennedy-Wilson Properties, Ltd. (Responsible Broker Identity, DRE #00659610) makes no warranty or representation as to the accuracy of the information contained herein. Terms of sale or lease and availability of the property are subject to change or withdrawal without notice.

DANVILLE FINANCIAL CENTER • TWO-STORY OFFICE BUILDING

Office Suites for Lease

500 La Gonda Way, Danville, CA 94526



ADAM GOLDBACKER
Senior Portfolio Manager
O: 925-957-4623 C: 312-446-7787
AGoldacker@kennedywilson.com
DRE #01974618

Kennedy Wilson Brokerage | 1850 Gateway Blvd., Suite 130, Concord, CA 94520

Kennedy-Wilson Properties, Ltd. (Responsible Broker Identity, DRE #00659610) makes no warranty or representation as to the accuracy of the information contained herein. Terms of sale or lease and availability of the property are subject to change or withdrawal without notice.