

# 721

## FLUSHING AVENUE

BUSHWICK, BROOKLYN

Between Broadway & Thornton Street

RESTAURANT FOR LEASE

### APPROXIMATE SIZE

Ground Floor: 1,450 SF  
Second Floor: 3,500 SF  
Lower Level: 2,500 SF

### ASKING RENT

Upon Request

### POSSESSION

Immediate

### TERM

Negotiable

### FRONTAGE

50 FT

### COMMENTS

- High foot and car traffic
- Elevator access
- Multiple means of egress
- Across from the Woodhull Hospital
- Restaurant zoned opportunity
- All uses are considered

### NEIGHBORS

Woodhull Hospital • Mirakuya • Rivera's Bagel  
Cafe • Frank's Coffee Shop • Burger King • Sonic •  
Popeyes • Walgreens • Footlocker • Taco Bell

### TRANSPORTATION



### NOAM AZIZ

Senior Director  
212.468.5984  
naziz@meridiancapital.com

### SHAYA KATZ

Associate  
212.468.5991  
shaya.katz@meridiancapital.com



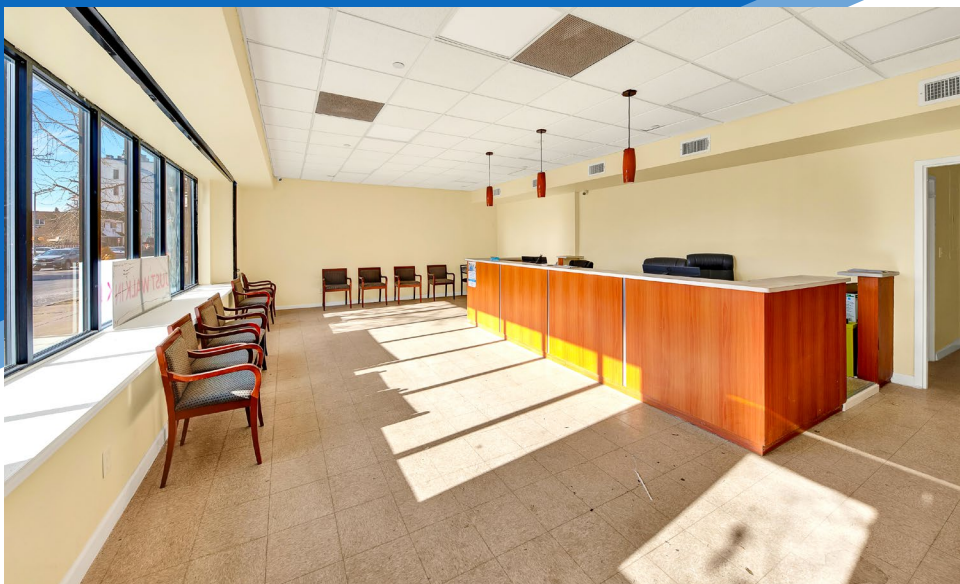
**MERIDIAN**  
RETAIL LEASING

All information supplied is from sources deemed reliable and is furnished subject to errors, omissions, modifications, removal of the listing from sale or lease, and to any listing conditions, including the rates and manner of payment of commissions for particular offerings imposed by Meridian Capital Group. This information may include estimates and projections prepared by Meridian Capital Group with respect to future events, and these future events may or may not actually occur. Such estimates and projections reflect various assumptions concerning anticipated results. While Meridian Capital Group believes these assumptions are reasonable, there can be no assurance that any of these estimates and projections will be correct. Therefore, actual results may vary materially from these estimates and projections. Any square footage dimensions set forth are approximate.



721 FLUSHING AVENUE  
BUSHWICK, BROOKLYN | Between Broadway and Thornton Street

RESTAURANT FOR LEASE



INTERIOR | GROUND FLOOR

NOAM AZIZ  
Senior Director  
212.468.5984  
naziz@meridiancapital.com

SHAYA KATZ  
Associate  
212.468.5991  
shaya.katz@meridiancapital.com



**MERIDIAN**  
RETAIL LEASING

All information supplied is from sources deemed reliable and is furnished subject to errors, omissions, modifications, removal of the listing from sale or lease, and to any listing conditions, including the rates and manner of payment of commissions for particular offerings imposed by Meridian Capital Group. This information may include estimates and projections prepared by Meridian Capital Group with respect to future events, and these future events may or may not actually occur. Such estimates and projections reflect various assumptions concerning anticipated results. While Meridian Capital Group believes these assumptions are reasonable, there can be no assurance that any of these estimates and projections will be correct. Therefore, actual results may vary materially from these estimates and projections. Any square footage dimensions set forth are approximate.



721 FLUSHING AVENUE  
BUSHWICK, BROOKLYN | Between Broadway and Thornton Street

RESTAURANT FOR LEASE



INTERIOR | SECOND FLOOR

NOAM AZIZ  
Senior Director  
212.468.5984  
naziz@meridiancapital.com

SHAYA KATZ  
Associate  
212.468.5991  
shaya.katz@meridiancapital.com



**MERIDIAN**  
RETAIL LEASING

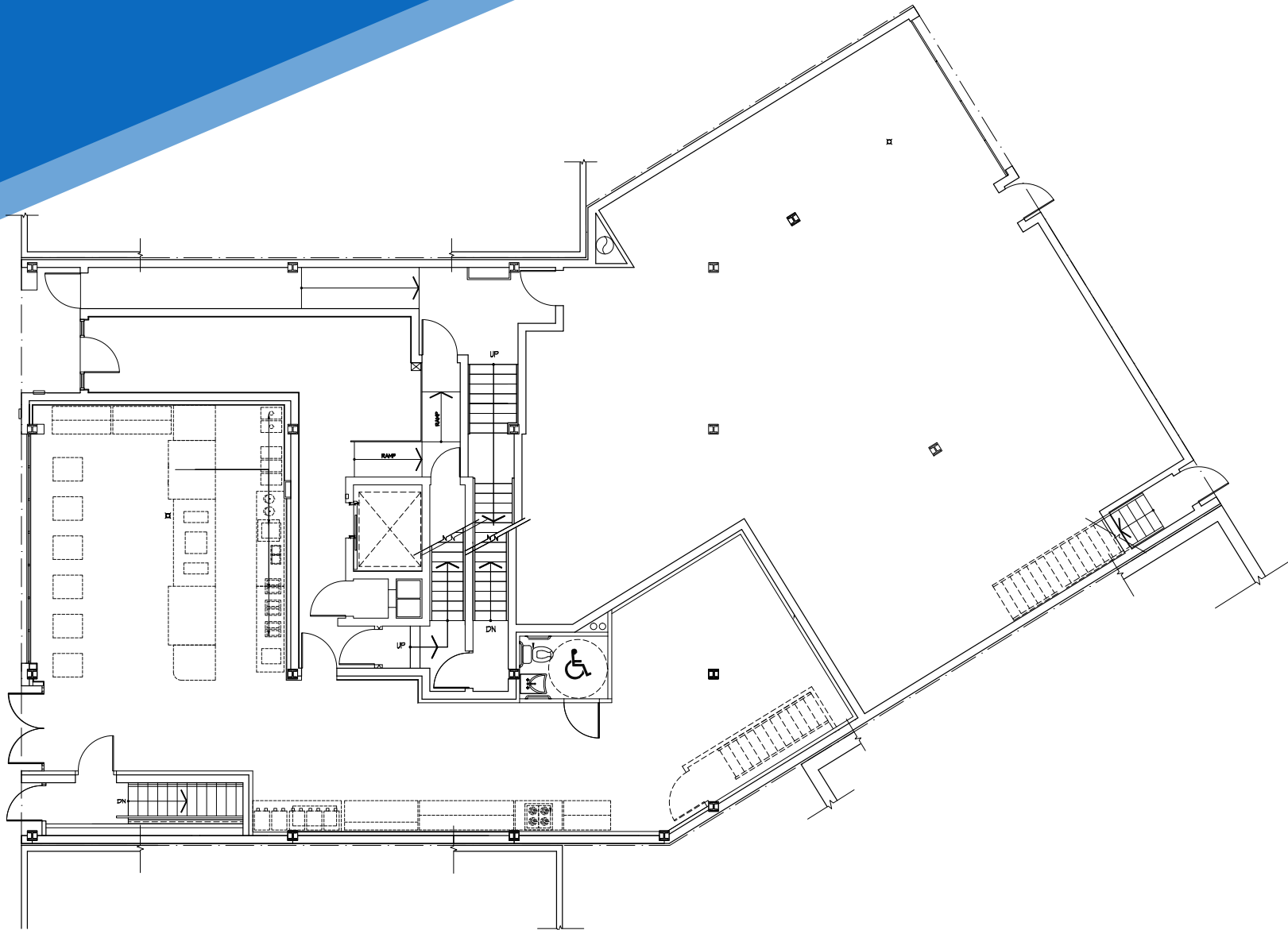
All information supplied is from sources deemed reliable and is furnished subject to errors, omissions, modifications, removal of the listing from sale or lease, and to any listing conditions, including the rates and manner of payment of commissions for particular offerings imposed by Meridian Capital Group. This information may include estimates and projections prepared by Meridian Capital Group with respect to future events, and these future events may or may not actually occur. Such estimates and projections reflect various assumptions concerning anticipated results. While Meridian Capital Group believes these assumptions are reasonable, there can be no assurance that any of these estimates and projections will be correct. Therefore, actual results may vary materially from these estimates and projections. Any square footage dimensions set forth are approximate.

721 FLUSHING AVENUE

BUSHWICK, BROOKLYN | Between Broadway and Thornton Street

RESTAURANT FOR LEASE

FLOOR PLAN | GROUND FLOOR



NOAM AZIZ

Senior Director  
212.468.5984

[naziz@meridiancapital.com](mailto:naziz@meridiancapital.com)

SHAYA KATZ

Associate  
212.468.5991

[shaya.katz@meridiancapital.com](mailto:shaya.katz@meridiancapital.com)



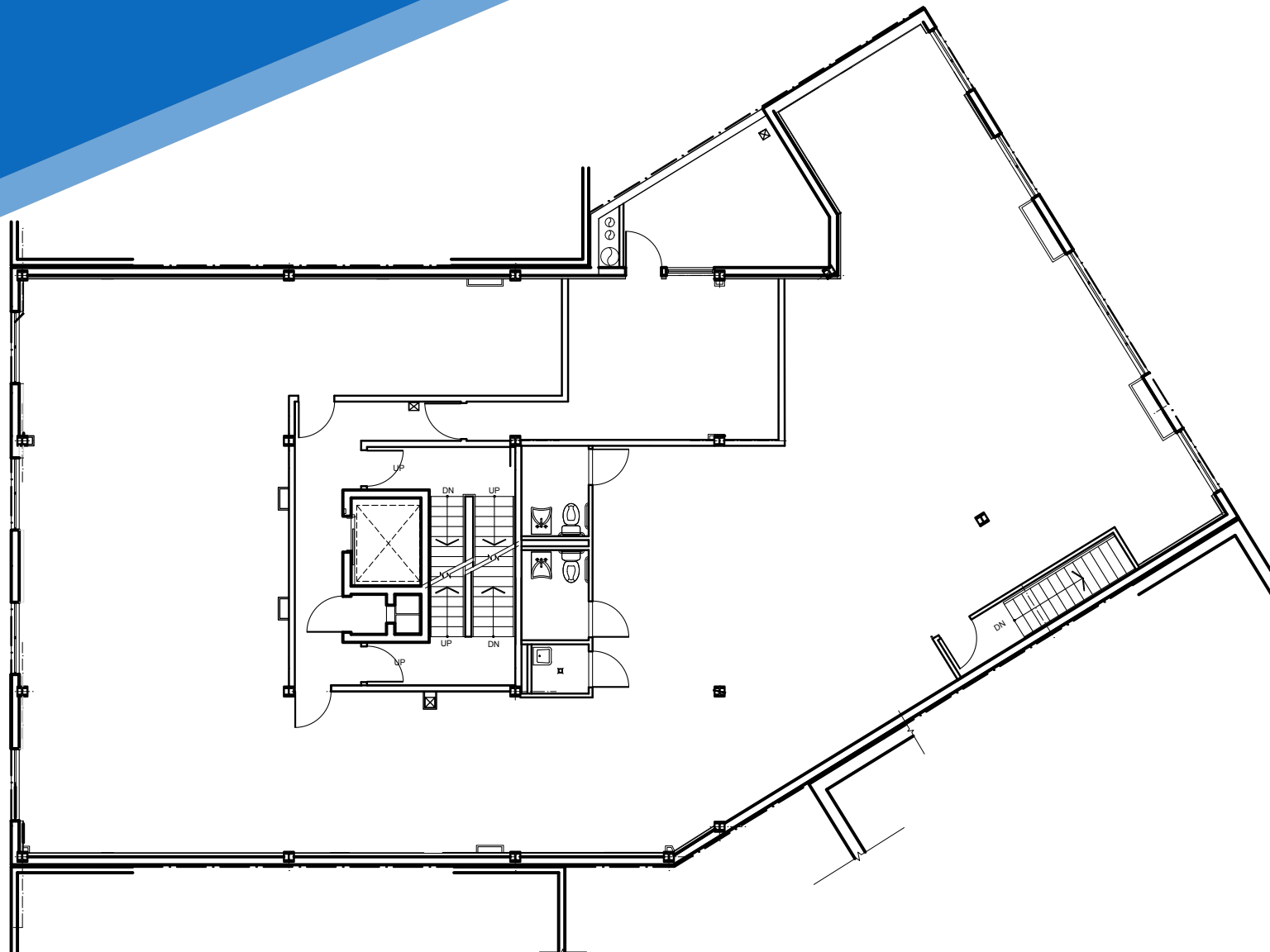
**MERIDIAN**  
RETAIL LEASING

All information supplied is from sources deemed reliable and is furnished subject to errors, omissions, modifications, removal of the listing from sale or lease, and to any listing conditions, including the rates and manner of payment of commissions for particular offerings imposed by Meridian Capital Group. This information may include estimates and projections prepared by Meridian Capital Group with respect to future events, and these future events may or may not actually occur. Such estimates and projections reflect various assumptions concerning anticipated results. While Meridian Capital Group believes these assumptions are reasonable, there can be no assurance that any of these estimates and projections will be correct. Therefore, actual results may vary materially from these estimates and projections. Any square footage dimensions set forth are approximate.

721 FLUSHING AVENUE  
BUSHWICK, BROOKLYN | Between Broadway and Thornton Street

RESTAURANT FOR LEASE

FLOOR PLAN | SECOND FLOOR



NOAM AZIZ  
Senior Director  
212.468.5984  
naziz@meridiancapital.com

SHAYA KATZ  
Associate  
212.468.5991  
shaya.katz@meridiancapital.com



**MERIDIAN**  
RETAIL LEASING

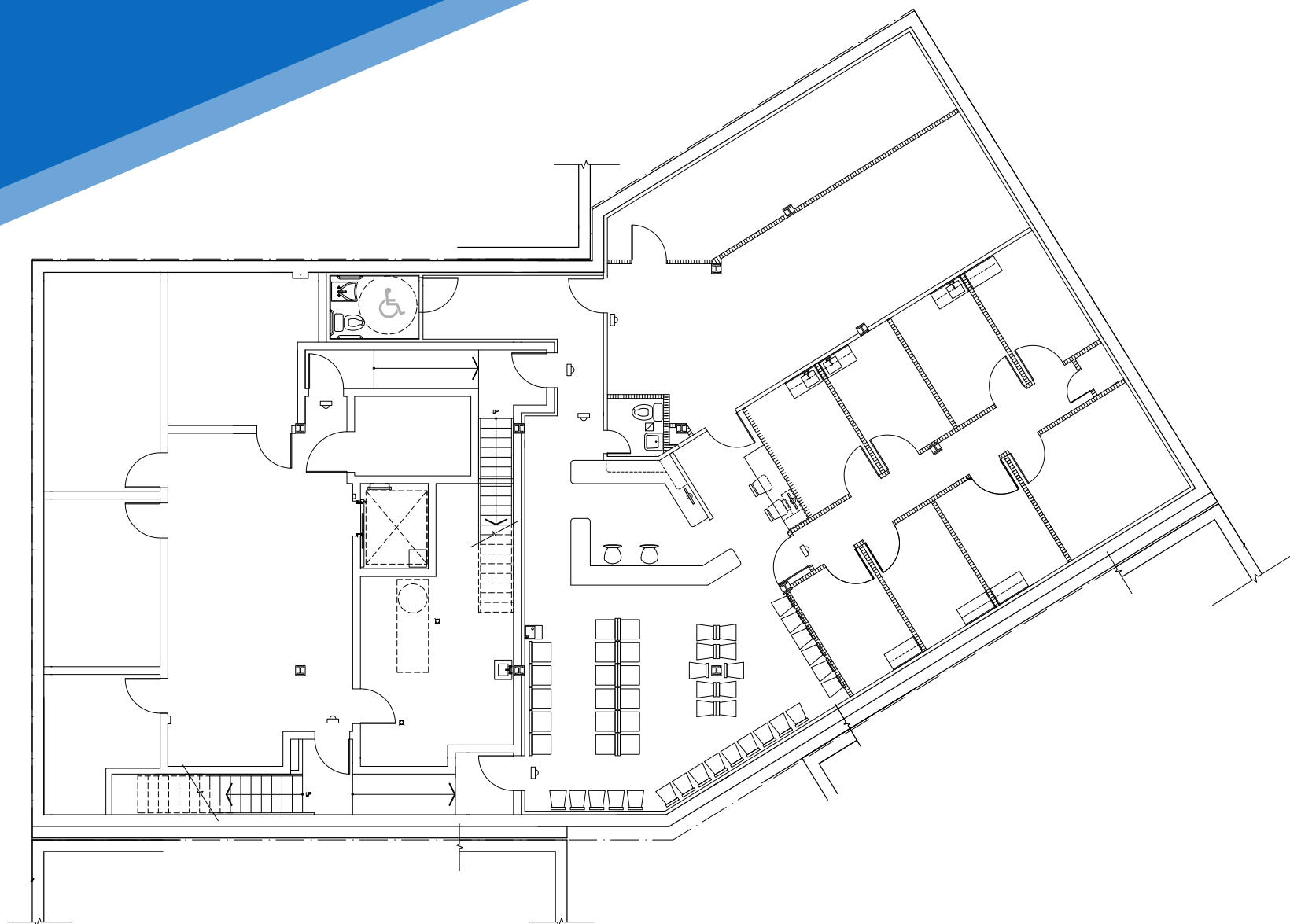
All information supplied is from sources deemed reliable and is furnished subject to errors, omissions, modifications, removal of the listing from sale or lease, and to any listing conditions, including the rates and manner of payment of commissions for particular offerings imposed by Meridian Capital Group. This information may include estimates and projections prepared by Meridian Capital Group with respect to future events, and these future events may or may not actually occur. Such estimates and projections reflect various assumptions concerning anticipated results. While Meridian Capital Group believes these assumptions are reasonable, there can be no assurance that any of these estimates and projections will be correct. Therefore, actual results may vary materially from these estimates and projections. Any square footage dimensions set forth are approximate.



721 FLUSHING AVENUE  
BUSHWICK, BROOKLYN | Between Broadway and Thornton Street

RESTAURANT FOR LEASE

FLOOR PLAN | LOWER LEVEL



NOAM AZIZ  
Senior Director  
212.468.5984  
naziz@meridiancapital.com

SHAYA KATZ  
Associate  
212.468.5991  
shaya.katz@meridiancapital.com



**MERIDIAN**  
RETAIL LEASING

All information supplied is from sources deemed reliable and is furnished subject to errors, omissions, modifications, removal of the listing from sale or lease, and to any listing conditions, including the rates and manner of payment of commissions for particular offerings imposed by Meridian Capital Group. This information may include estimates and projections prepared by Meridian Capital Group with respect to future events, and these future events may or may not actually occur. Such estimates and projections reflect various assumptions concerning anticipated results. While Meridian Capital Group believes these assumptions are reasonable, there can be no assurance that any of these estimates and projections will be correct. Therefore, actual results may vary materially from these estimates and projections. Any square footage dimensions set forth are approximate.

## 721 FLUSHING AVENUE

BUSHWICK, BROOKLYN | Between Broadway and Thornton Street

RESTAURANT FOR LEASE



NEIGHBORS

### NOAM AZIZ

Senior Director  
212.468.5984  
naziz@meridiancapital.com

### SHAYA KATZ

Associate  
212.468.5991  
shaya.katz@meridiancapital.com



**MERIDIAN**  
RETAIL LEASING

All information supplied is from sources deemed reliable and is furnished subject to errors, omissions, modifications, removal of the listing from sale or lease, and to any listing conditions, including the rates and manner of payment of commissions for particular offerings imposed by Meridian Capital Group. This information may include estimates and projections prepared by Meridian Capital Group with respect to future events, and these future events may or may not actually occur. Such estimates and projections reflect various assumptions concerning anticipated results. While Meridian Capital Group believes these assumptions are reasonable, there can be no assurance that any of these estimates and projections will be correct. Therefore, actual results may vary materially from these estimates and projections. Any square footage dimensions set forth are approximate.