



THALHIMER

RIVERFRONT RESTAURANT / EVENT / OFFICE SPACE

Rocketts Landing

Riverfront at Old Delaware St. | Richmond, Virginia



Up to 16,000 SF Available with River Views

For more information, contact:

JEFF COOKE, SIOR

Senior Vice President

804 697 3459

jeff.cooke@thalhimer.com

AMY BRODERICK

First Vice President

804 344 7189

amy.broderick@thalhimer.com

Thalhimer Center
11100 W. Broad Street
Glen Allen, VA 23060
www.thalhimer.com

Independently Owned and Operated / A Member of the Cushman & Wakefield Alliance

Cushman & Wakefield | Thalhimer © 2015. No warranty or representation, express or implied, is made to the accuracy or completeness of the information contained herein, and same is submitted subject to errors, omissions, change of price, rental or other conditions, withdrawal without notice, and to any special listing conditions imposed by the property owner(s). As applicable, we make no representation as to the condition of the property (or properties) in question.

Welcome to Rocketts Landing

It's home to hundreds of people and is growing every day. It's a destination for water lovers, foodies and cyclists. Rocketts Landing is Richmond's hip, cool waterfront neighborhood, set right on the James on a site that was once considered the busiest inland port in America.

It's 10 minutes from downtown Richmond, connected by the GRTC Pulse, and right on the Capital Bike Trail. And it's the ultimate place for businesses that want to be where the action is. It's amazing what the river can do for a business.

650±
residences



150,000± SF
of office



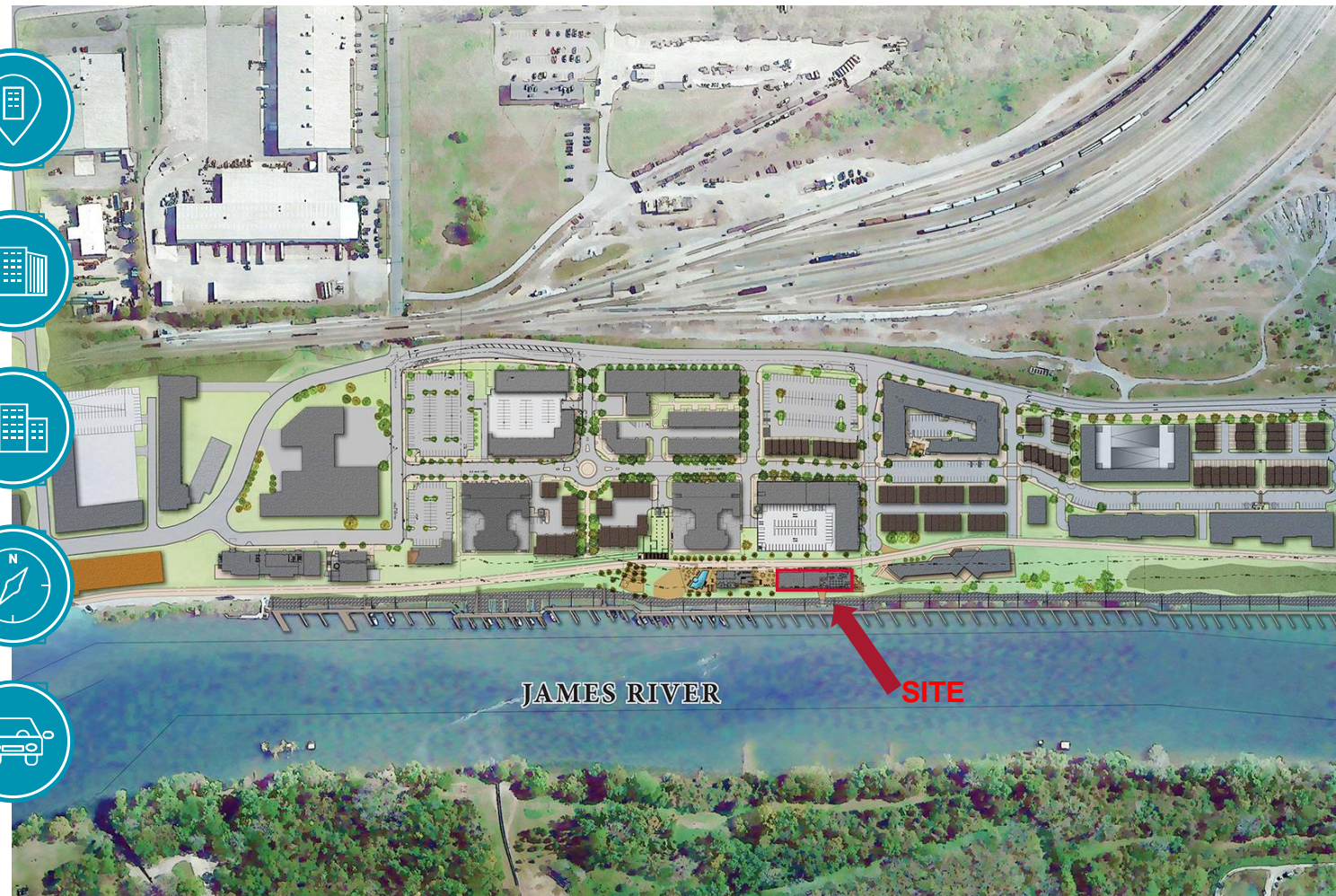
40,000± SF
of retail



3 MINUTES
to downtown CBD



5 MINUTES
to I-95 and I-64



Existing Structure to be custom renovated

Located in Henrico County

Specifications

Location	Old Delaware Street & the James River
Total Available SF	Up to 16,000 SF, on two floors, with river views
Parking	4 spaces per 1,000 SF Parking deck under construction
Amenities	<ul style="list-style-type: none"> • Enjoy riverfront access • Adjacent to the Virginia Capital Trail • Three restaurants currently open on site

THE BOATHOUSE



Existing Conditions



Conceptual Rendering





For more information, contact:

JEFF COOKE, SIOR
Senior Vice President
804 697 3459
jeff.cooke@thalhimer.com

AMY BRODERICK
First Vice President
804 344 7189
amy.broderick@thalhimer.com

Thalhimer Center
11100 W. Broad Street
Glen Allen, VA 23060
www.thalhimer.com



THALHIMER

RIVERFRONT RESTAURANT / EVENT / OFFICE SPACE

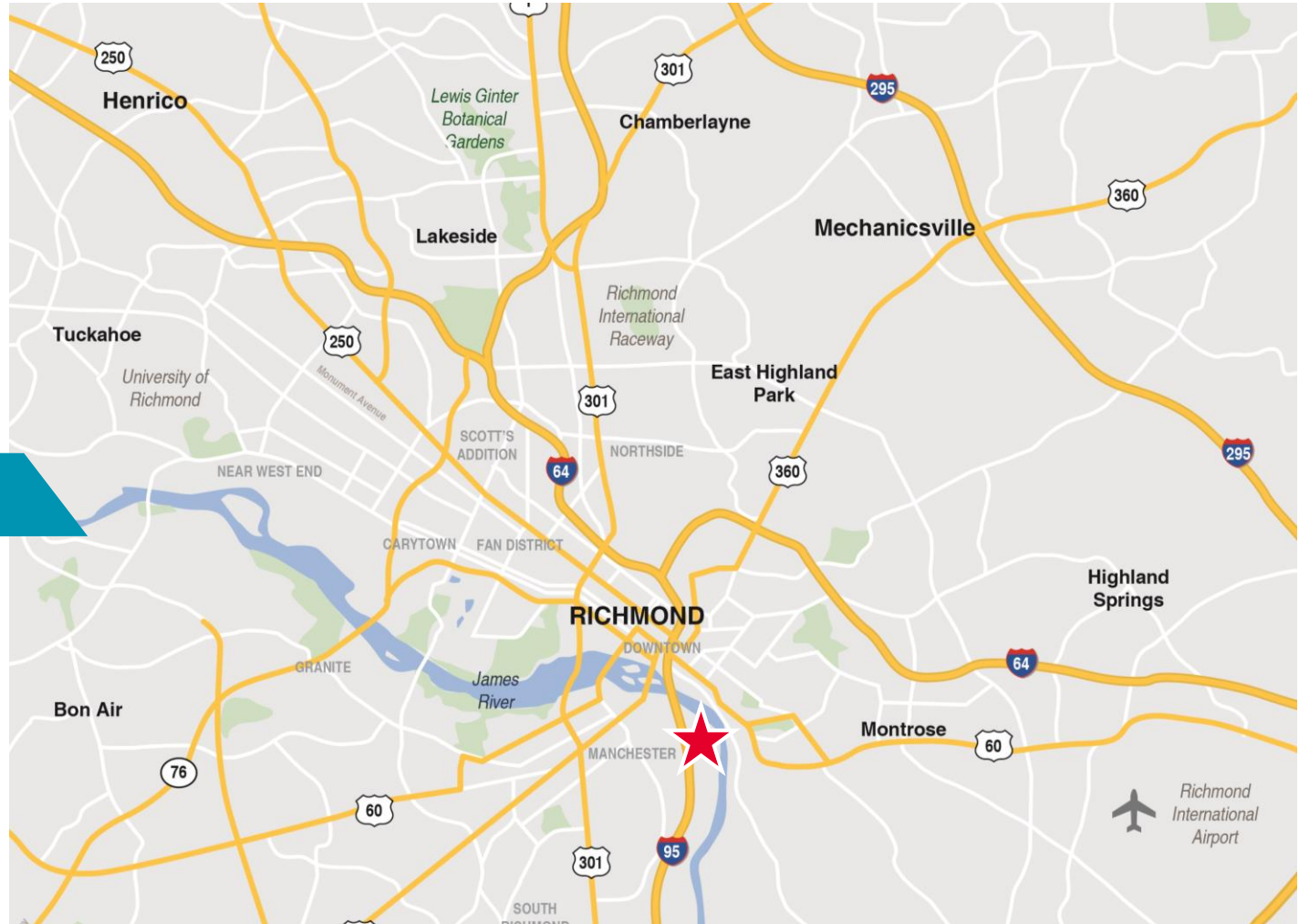
Rocketts Landing

Riverfront at Old Delaware St. | Richmond, Virginia



With so many people coming here to live and play, businesses located at Rocketts have become some of the area's major attractions. Offices at Rocketts Landing benefit greatly from the community's walkability, with The Boathouse, Conch Republic, the Virginia Capital Trail and the James River just a block away, and the view is enough to make anyone want to work here. It's also located in tax-friendly Henrico County, just minutes from the central business district.

For more information visit rockettsvillage.com



For more information, contact:

JEFF COOKE, SIOR
Senior Vice President
804 697 3459
jeff.cooke@thalhimer.com

AMY BRODERICK
First Vice President
804 344 7189
amy.broderick@thalhimer.com

Thalhimer Center
11100 W. Broad Street
Glen Allen, VA 23060
www.thalhimer.com

Independently Owned and Operated / A Member of the Cushman & Wakefield Alliance

Cushman & Wakefield | Thalhimer © 2015. No warranty or representation, express or implied, is made to the accuracy or completeness of the information contained herein, and same is submitted subject to errors, omissions, change of price, rental or other conditions, withdrawal without notice, and to any special listing conditions imposed by the property owner(s). As applicable, we make no representation as to the condition of the property (or properties) in question.