

# Powers Ferry Landing West



6425 & 6445 POWERS FERRY ROAD | ATLANTA, GA 30339

 POPE & LAND  
REAL ESTATE



# Powers Ferry Landing West

## PROPERTY HIGHLIGHTS



[CLICK HERE FOR VIRTUAL TOUR](#)

### LEASING INFORMATION

Jennifer Koontz  
jkoontz@popeandland.com

Frances Land Klee  
fland@popeandland.com

Sam Neel  
sneel@popeandland.com

770.980.0808 | popeandland.com

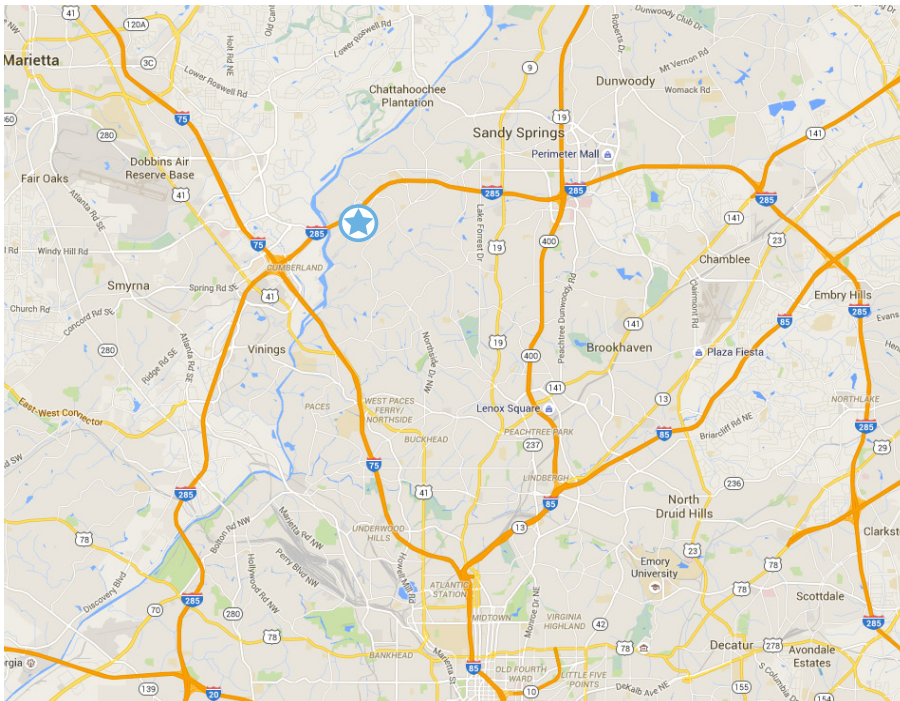
### PROPERTY INFORMATION

- Parking Ratio (3.8:1000)
- On-site security and CCTV
- Located near critical amenities
- Locally owned and managed
- Three points of ingress/egress
- Quick access in and out of the project
- On site property management and engineering
- Brand new outdoor courtyard with updated seating and free Wifi
- Conference Center with Apple TV
- Vending area



# Powers Ferry Landing West

IDEALLY LOCATED IN THE RIVER DISTRICT



## LEASING INFORMATION:

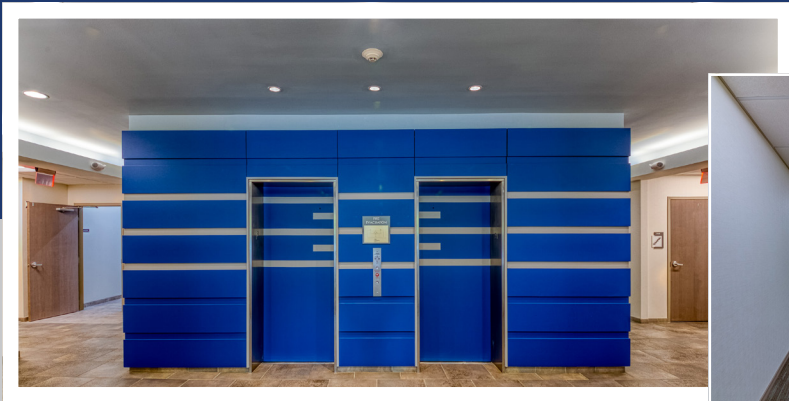
Jennifer Koontz [jkoontz@popeandland.com](mailto:jkoontz@popeandland.com) | Frances Land Klee [fland@popeandland.com](mailto:fland@popeandland.com) | Sam Neel [sneel@popeandland.com](mailto:sneel@popeandland.com)



# Powers Ferry Landing West

## RENOVATIONS & UPGRADES

 VIRTUAL TOUR



### COMPLETED RENOVATIONS AND UPGRADES

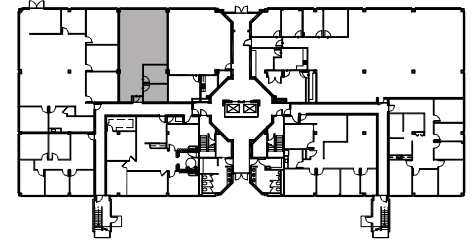
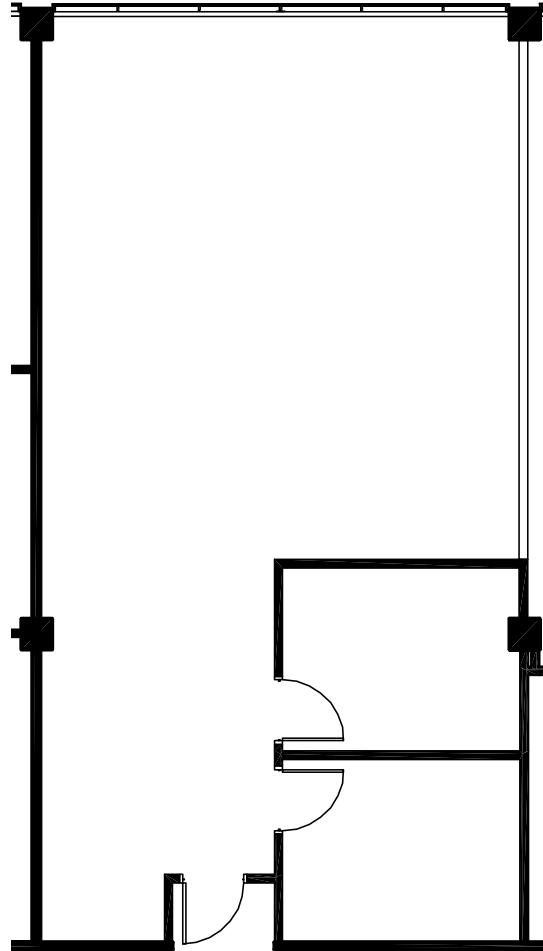
- Enhanced outdoor environment and gathering spaces
- New interior signage
- Spec suites
- High-end interior finishes including renovated lobbies and corridors
- New exterior monument signs
- New secondary monument signs
- Digital directory
- Parking lot enhancements





# Powers Ferry Landing West

---



6425 - SUITE 190

1,257 RSF

---

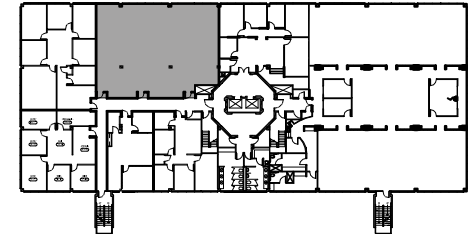
**LEASING INFORMATION:**

Jennifer Koontz [jkoontz@popeandland.com](mailto:jkoontz@popeandland.com) | Frances Land Klee [fland@popeandland.com](mailto:fland@popeandland.com) | Sam Neel [sneel@popeandland.com](mailto:sneel@popeandland.com)

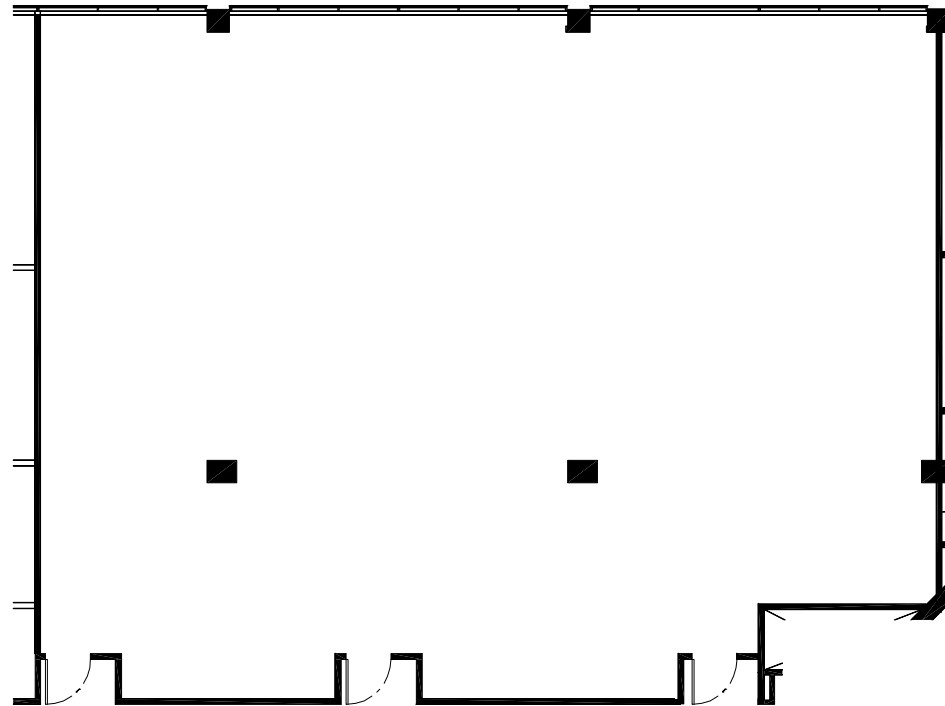


# Powers Ferry Landing West

---



[▶ VIRTUAL TOUR](#)



**6425 - SUITE 255**

3,060 RSF

---

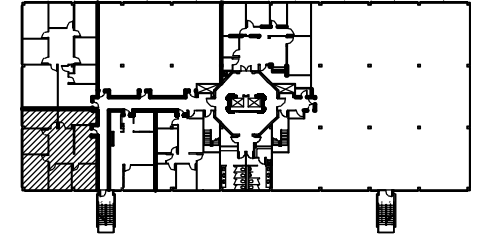
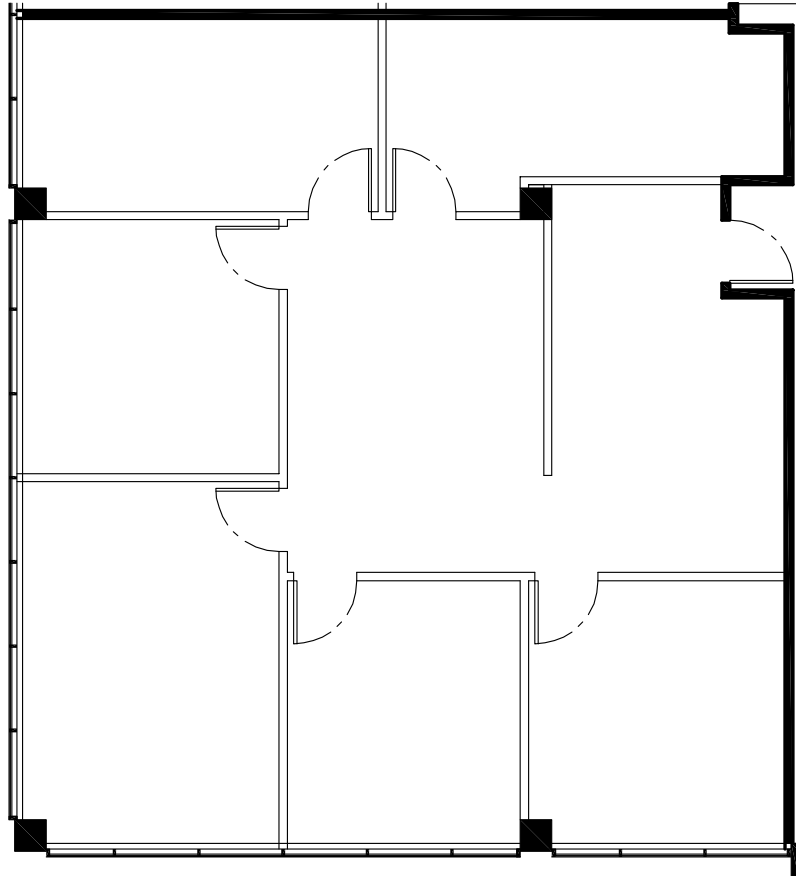
**LEASING INFORMATION:**

**Jennifer Koontz** jkoontz@popeandland.com | **Frances Land Klee** fland@popeandland.com | **Sam Neel** sneel@popeandland.com



# Powers Ferry Landing West

---



6425 - SUITE 297

1,670 RSF

---

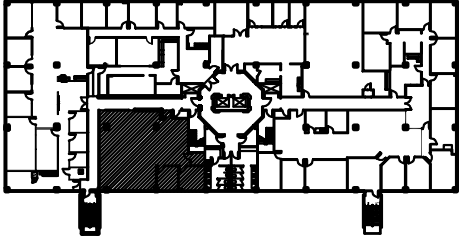
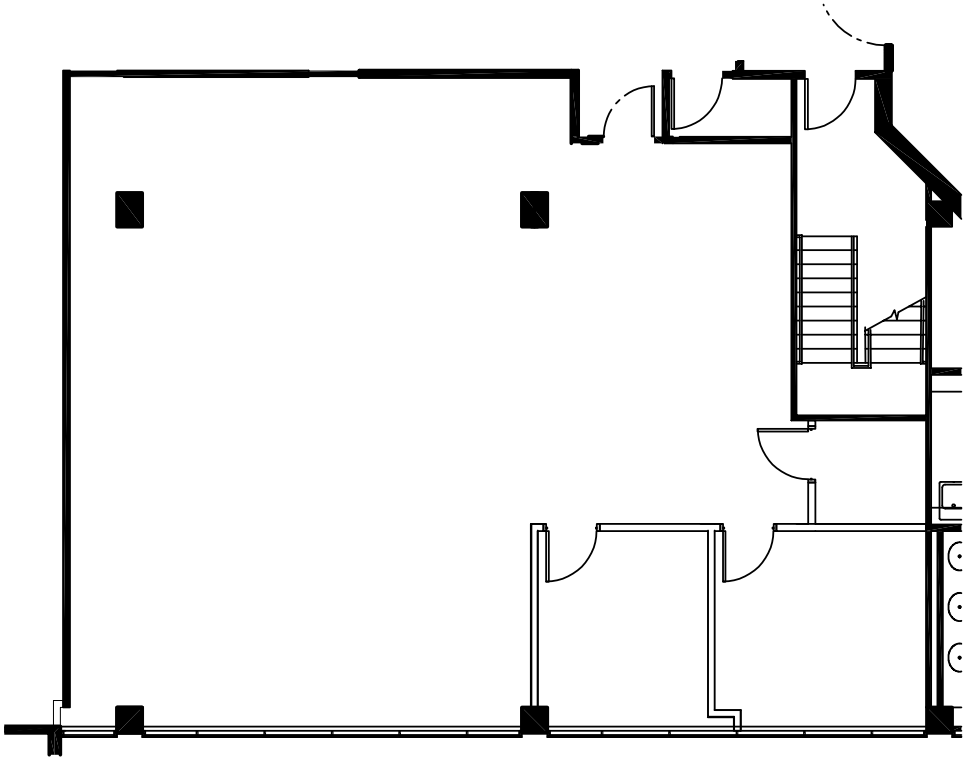
**LEASING INFORMATION:**

Jennifer Koontz [jkoontz@popeandland.com](mailto:jkoontz@popeandland.com) | Frances Land Klee [fland@popeandland.com](mailto:fland@popeandland.com) | Sam Neel [sneel@popeandland.com](mailto:sneel@popeandland.com)



# Powers Ferry Landing West

---



6445 - SUITE 200  
2,036 RSF

---

**LEASING INFORMATION:**

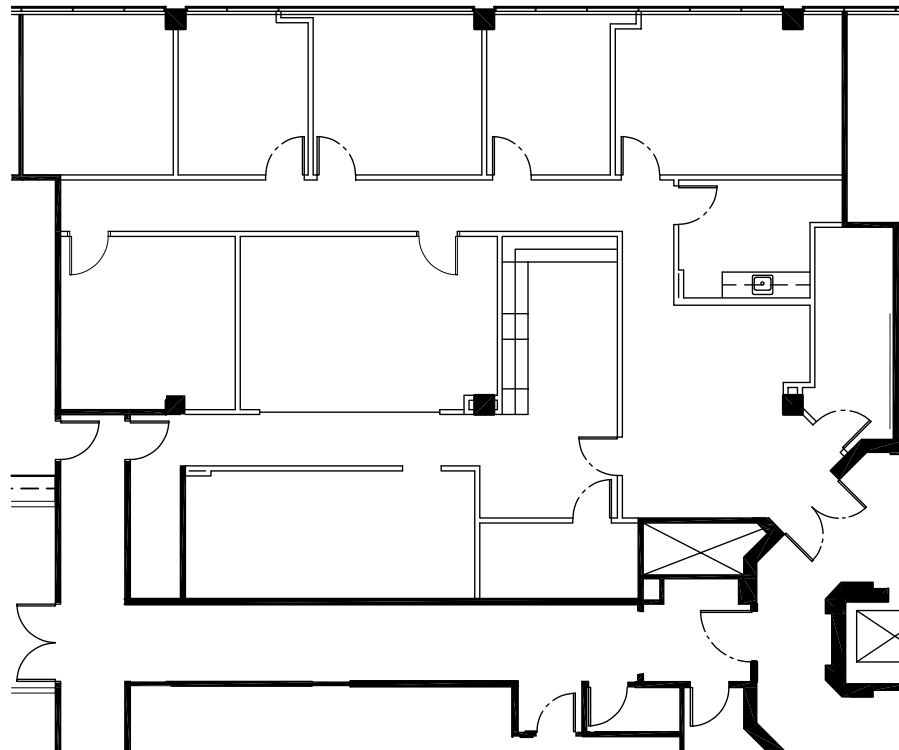
Jennifer Koontz [jkoontz@popeandland.com](mailto:jkoontz@popeandland.com) | Frances Land Klee [fland@popeandland.com](mailto:fland@popeandland.com) | Sam Neel [sneel@popeandland.com](mailto:sneel@popeandland.com)





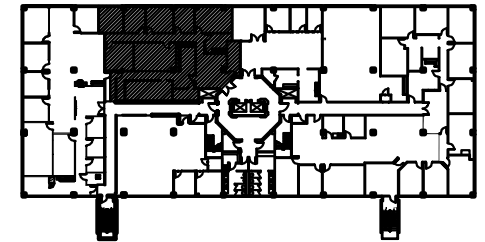
# Powers Ferry Landing West

---



6445 - SUITE 210

3,153 RSF



[▶ VIRTUAL TOUR](#)

---

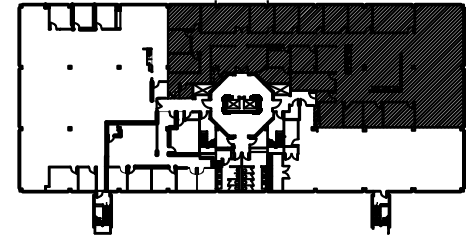
## LEASING INFORMATION:

Jennifer Koontz [jkoontz@popeandland.com](mailto:jkoontz@popeandland.com) | Frances Land Klee [fland@popeandland.com](mailto:fland@popeandland.com) | Sam Neel [sneel@popeandland.com](mailto:sneel@popeandland.com)

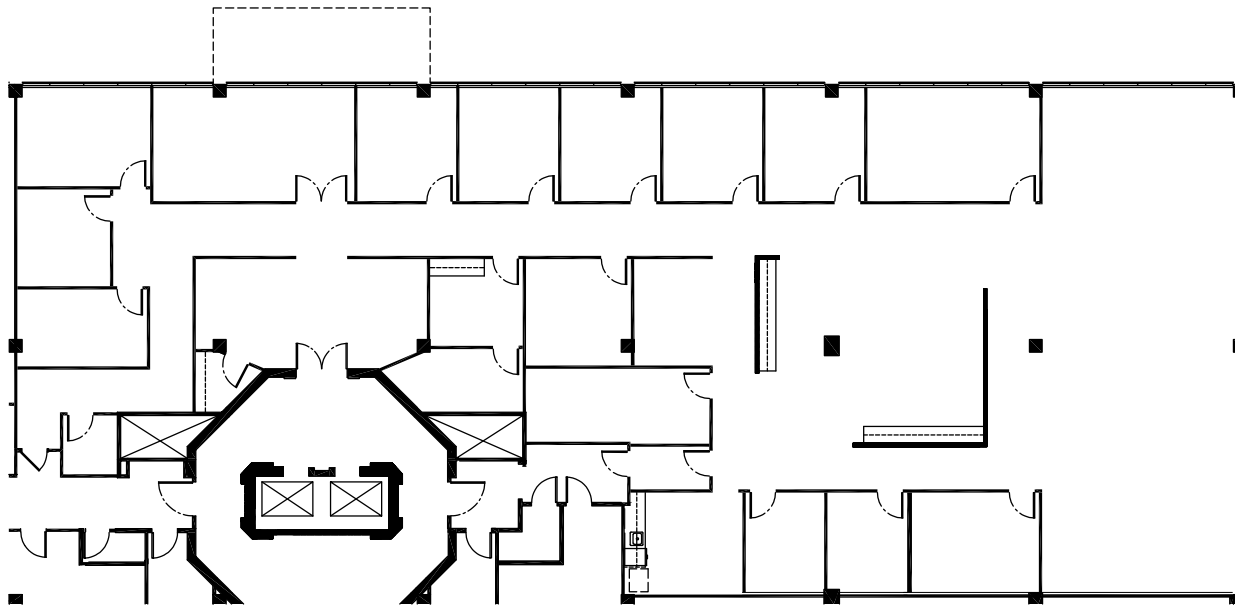


# Powers Ferry Landing West

---



[▶ VIRTUAL TOUR](#)



**6445 - SUITE 300**

8,275 RSF

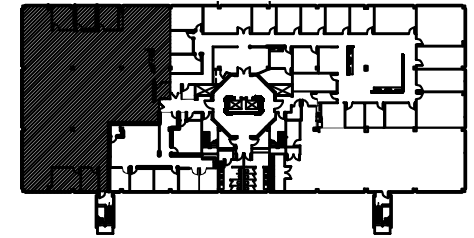
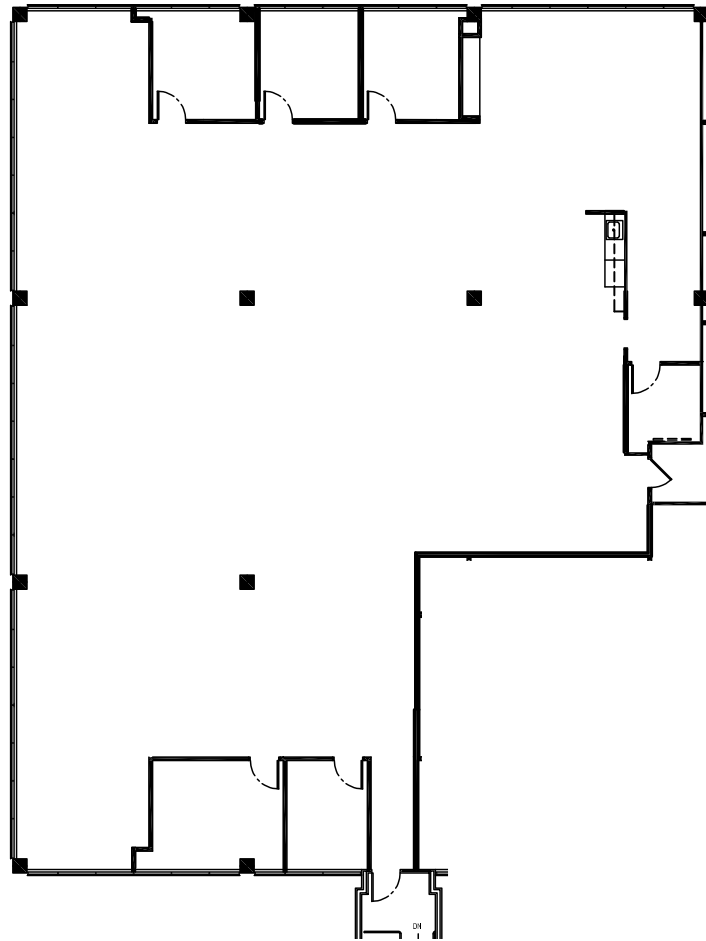
---

**LEASING INFORMATION:**

Jennifer Koontz [jkoontz@popeandland.com](mailto:jkoontz@popeandland.com) | Frances Land Klee [fland@popeandland.com](mailto:fland@popeandland.com) | Sam Neel [sneel@popeandland.com](mailto:sneel@popeandland.com)

# Powers Ferry Landing West

---



**6445 - SUITE 325**

6,446 RSF

---

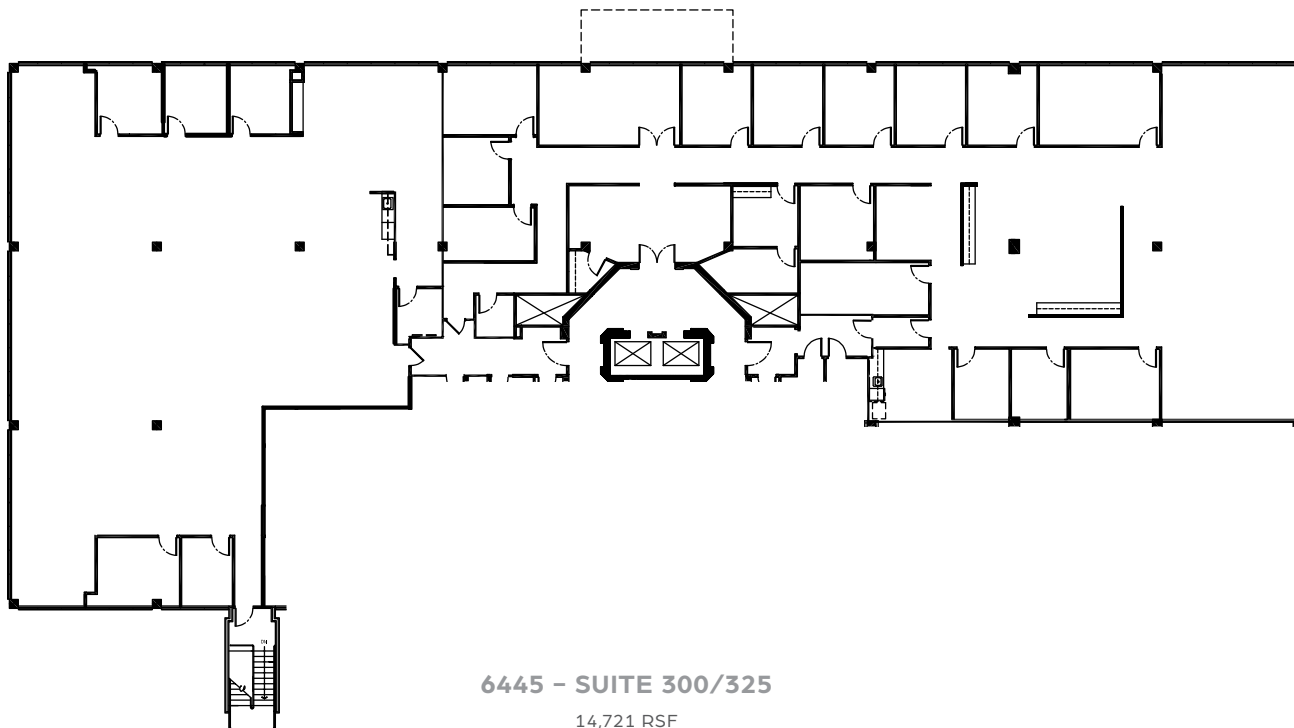
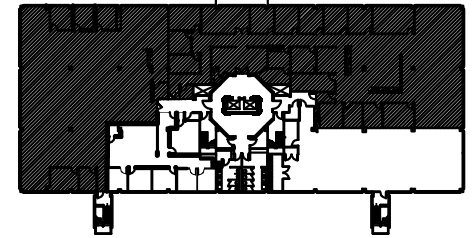
**LEASING INFORMATION:**

**Jennifer Koontz** [jkoontz@popeandland.com](mailto:jkoontz@popeandland.com) | **Frances Land Klee** [fland@popeandland.com](mailto:fland@popeandland.com) | **Sam Neel** [sneel@popeandland.com](mailto:sneel@popeandland.com)



# Powers Ferry Landing West

---



6445 - SUITE 300/325

14,721 RSF

---

**LEASING INFORMATION:**

Jennifer Koontz [jkoontz@popeandland.com](mailto:jkoontz@popeandland.com) | Frances Land Klee [fland@popeandland.com](mailto:fland@popeandland.com) | Sam Neel [sneel@popeandland.com](mailto:sneel@popeandland.com)