



RENAISSANCE COMMONS

333 FORSGATE DRIVE
JAMESBURG, NJ

DEVELOPED AND MANAGED BY:



Center highlights

- ▶ 2,513 foot medical/office turnkey suites available.
 - ▶ Freshly renovated with new neutral paint, LED lighting, and durable LVP wood-grain flooring.
- ▶ Located on busy Forsgate Drive, only 1.5 miles from NJ Turnpike Exit 8A.
- ▶ The center is comprised of 9 suites including 1 available medical/office suite, all of which enjoy the high visibility from Forsgate Drive.
 - ▶ 4 existing medical/office.
 - ▶ 4 retail tenants.
- ▶ Average drive-by traffic is over 12,000 cars per day.
- ▶ Average household income over \$142,823 in a 5-mile radius.

Existing Tenant mix

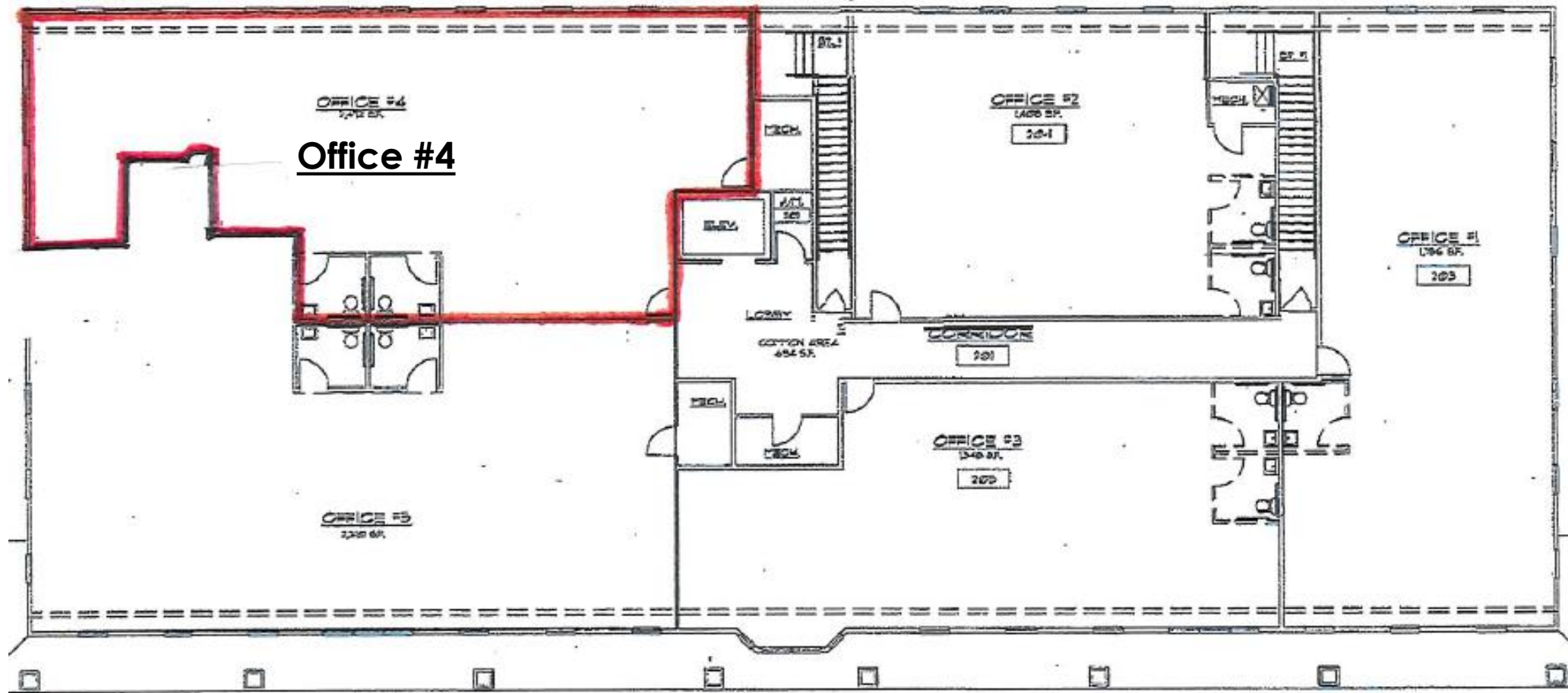
▶ Medical/Office

- ▶ Central Jersey Family Medical
- ▶ Gentle Smiles
- ▶ Quest Diagnostics
- ▶ Monroe Food & Ankle Care

▶ Retail

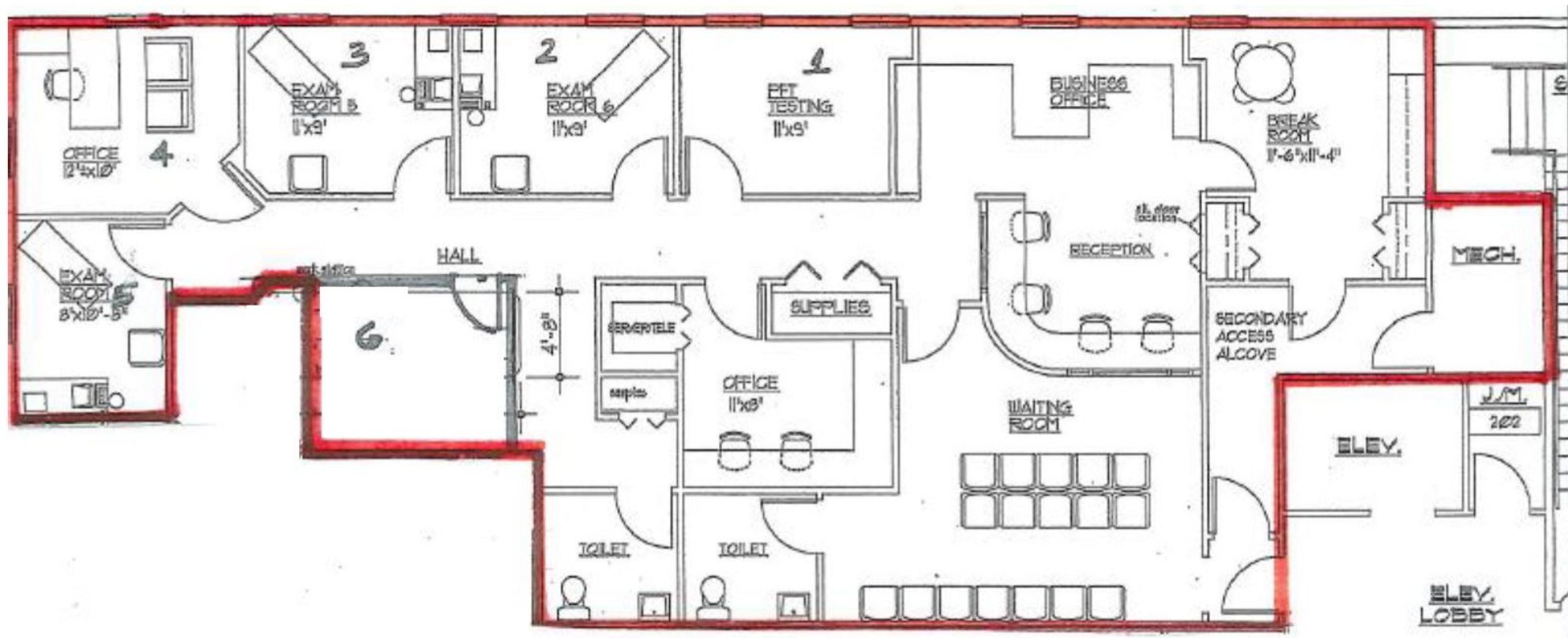
- ▶ Salon VIP Day Spa
- ▶ Point of Care Pharmacy
- ▶ Jamesburg Family Eye Care
- ▶ Audibel Hearing Center

Medical/Office Locations



Medical/Office #4 - 2,513 SF

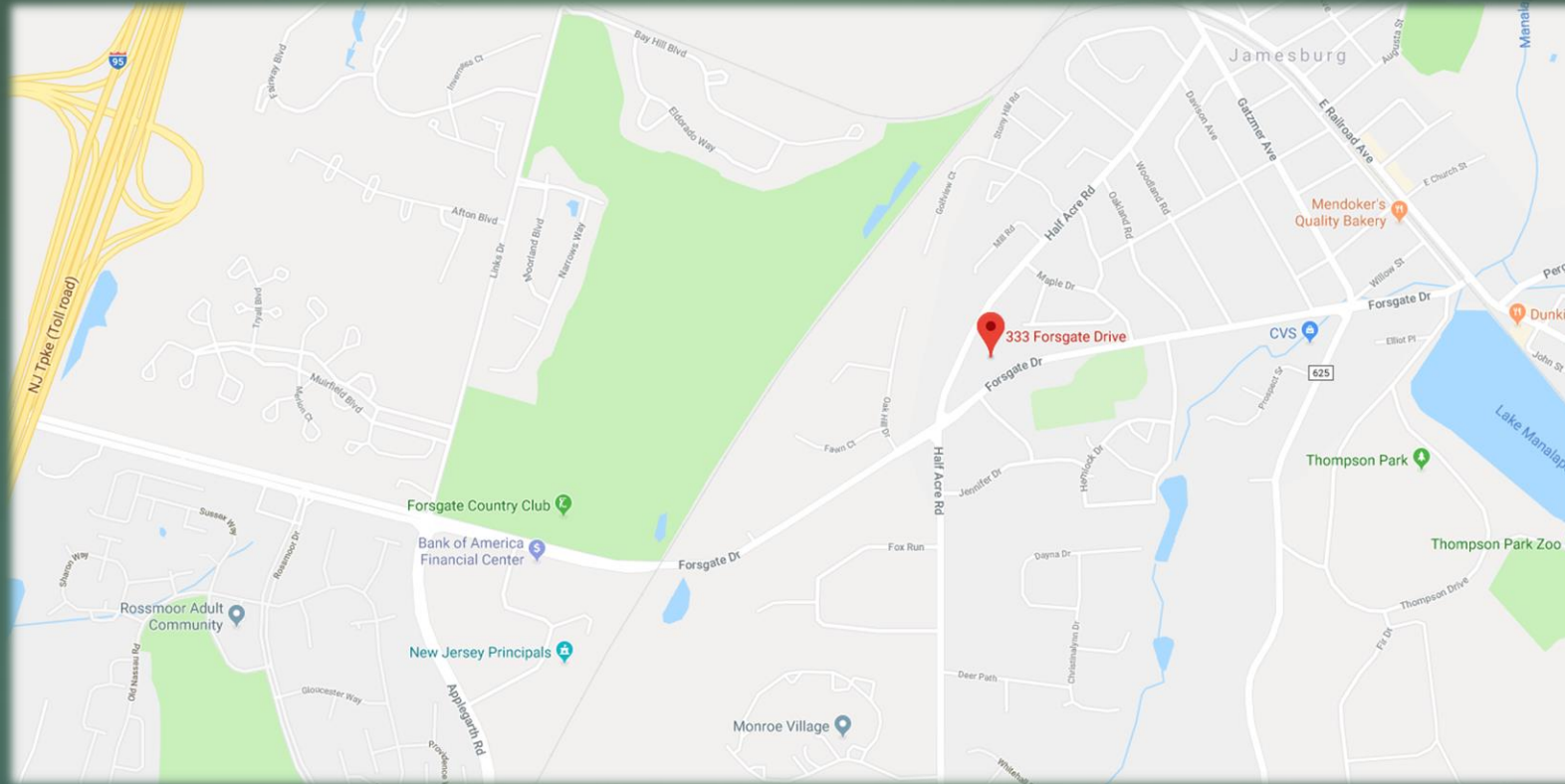
Net square footage – 2,039

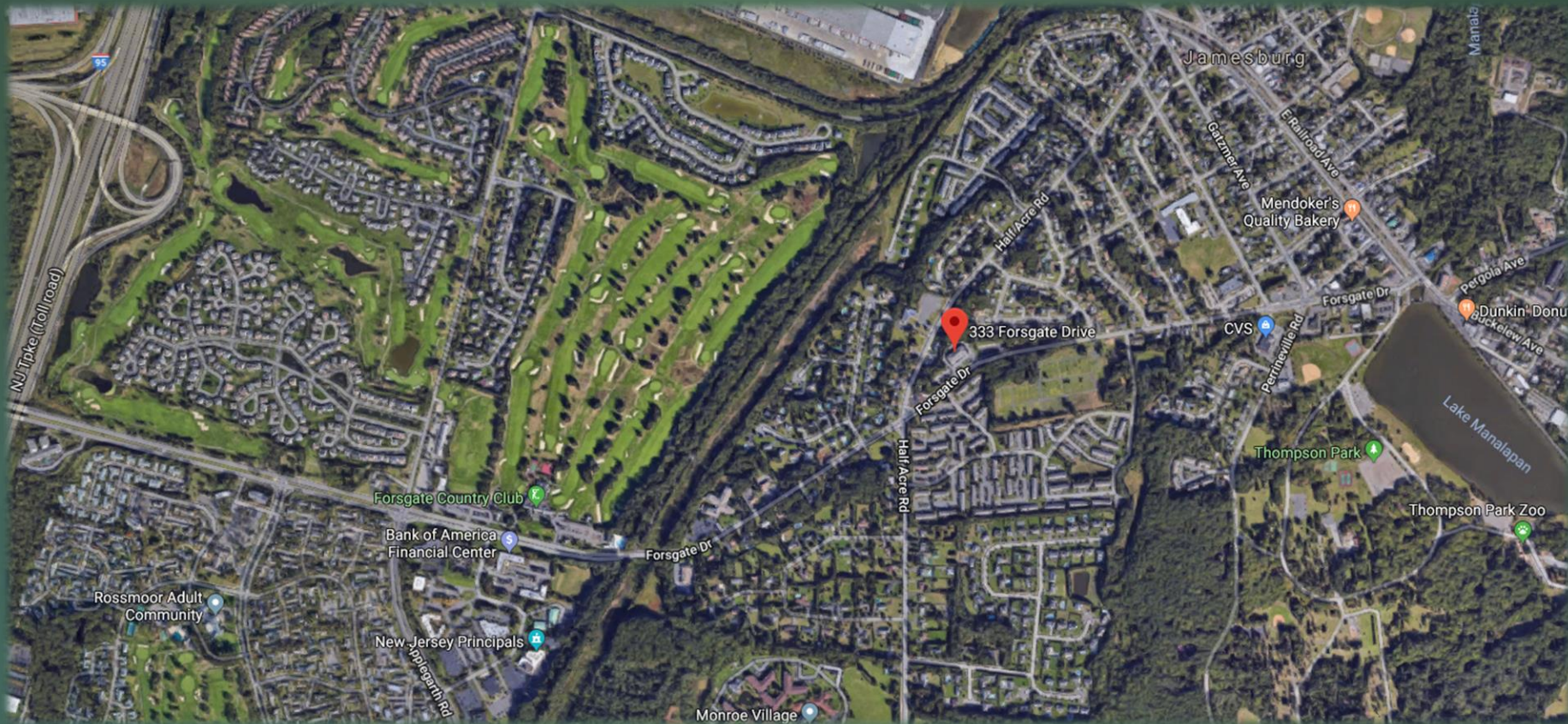




Street Views

General Location Map





Aerial Map of Surrounding Area