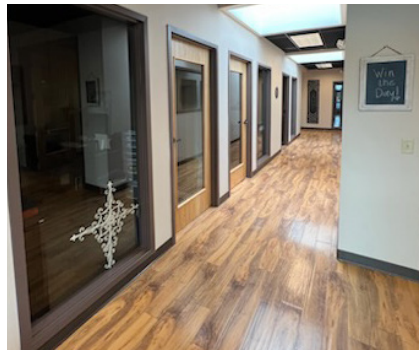
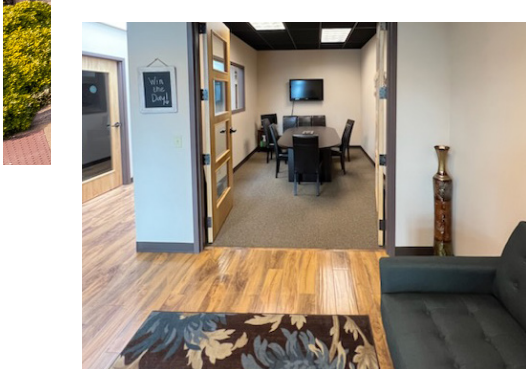




CANDALARIA CROSSING

2755 COMMERCIAL STREET SE, SALEM, OR SUITE 201

Commercial Sublease Available \$22.00/SF/Year/Gross



PROPERTY OVERVIEW

- High-quality Class A Mixed-use Retail and Office Center
- Frontage on Commercial Street SE - Traffic Volume of nearly 40,000 vehicles per day
- Year Built: 2009
- Parking Ratio: 4.0/1,000 square feet (88 spaces)
- Other Tenants Include: French Press Coffee & Crepes, Cafe Yumm!, UPS Store & Oregon Community Credit Union

SUITE 201 HIGHLIGHTS

- Size: 1,520 square feet
- Availability: Immediate
- Move-in ready office space
- Second-story with elevator access
- 5 private offices, conference room, kitchen, and private restroom



DANIEL SILVEY

CCIM, MRED, MBA

DBS Group; Knipe Realty

(503) 201-8537

danielsilvey@kniperealty.com

kniperealty.com

