

ROAN AT UNAKA CENTER

101 East Unaka Avenue
Johnson City, TN 37601

Location

At the intersection of E Unaka Ave and N Roan St in central Johnson City

Available for Lease

Suite 2: 800 SF retail/office - \$900/month NNN
Suite 7: 1,500 SF retail/office - \$1,500/month NNN

Highlights

Tenant improvement allowance package available

Retail center with good mix of tenants, including Wok & Hibachi restaurant

Spacious paved parking lot

Signage on N Roan St

Located at a lighted intersection

0.3 miles from I-26, exit 22

Minutes from Downtown Johnson City and major retail district on N Roan Street

Traffic Counts

E Unaka Ave: 6,000 (2022)
N Roan St: 8,361 (2022)

Demographics

(2024 Est.)	3 mile	5 mile	10 mile
Population	53,510	82,642	163,313
Median HH Income	\$49,990	\$54,223	\$61,574
Median Age	34.9	37.7	41.5

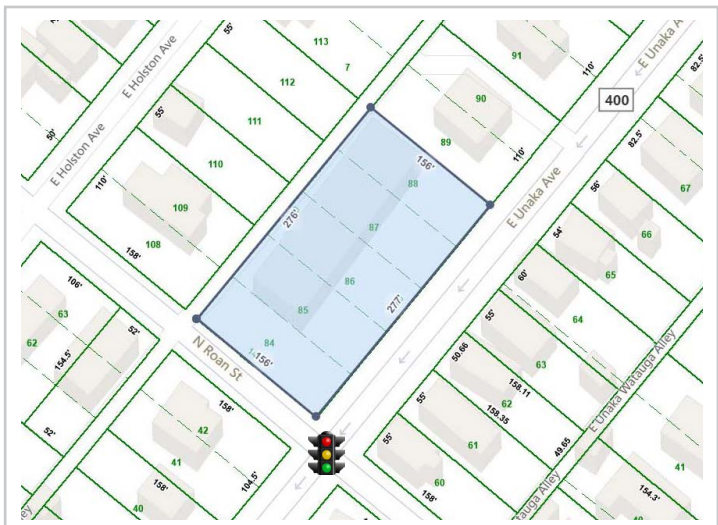
Contact

Shannon K. Castillo

Broker

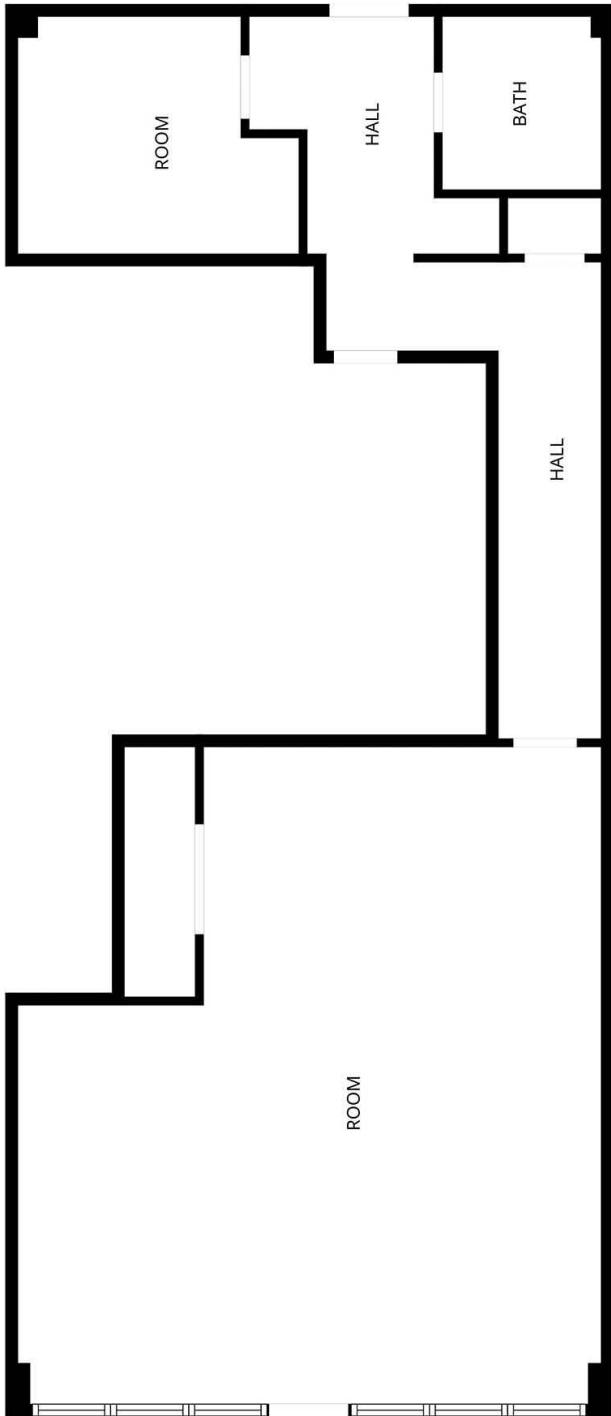
shannon@mitchcox.com

📞 423-282-6582 | 📠 423-282-5903
www.mitchcox.com

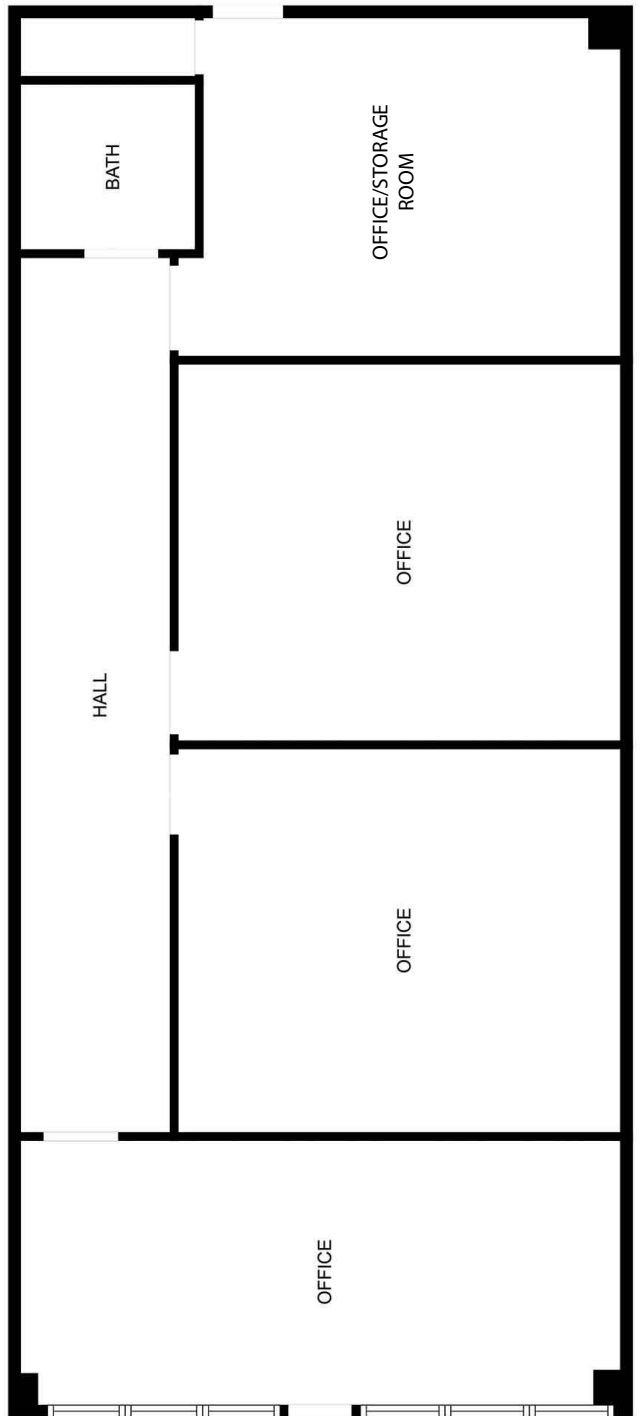




Suite 2

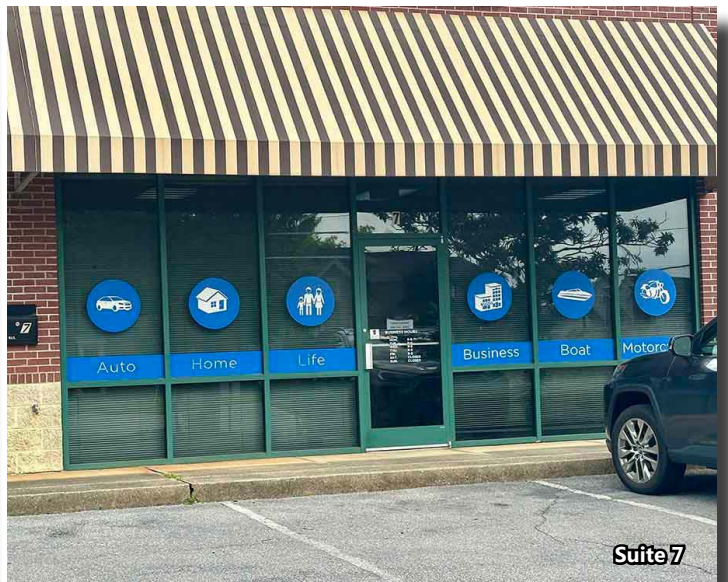


Suite 7

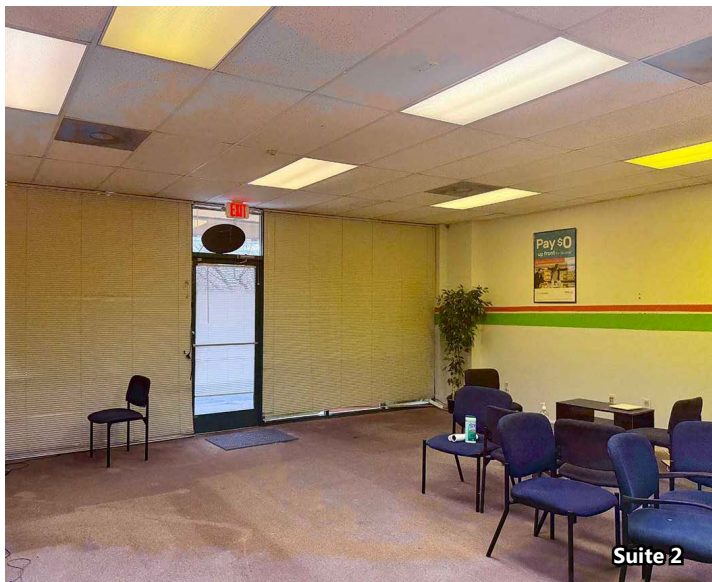




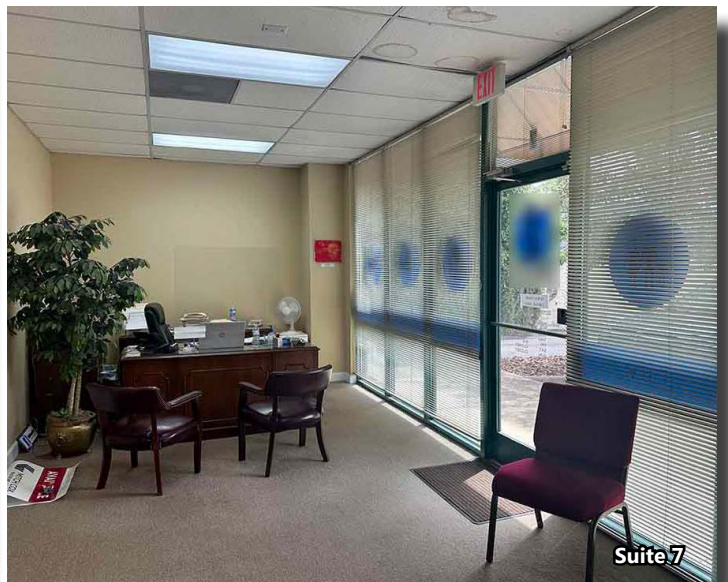
Suite 2



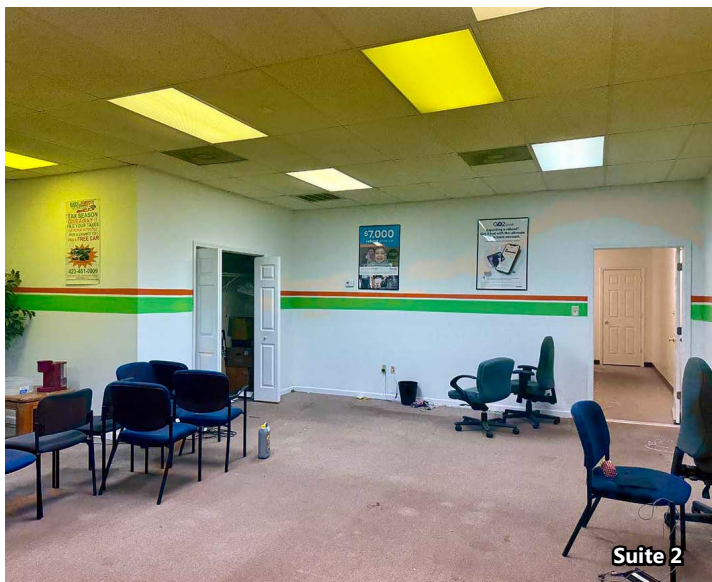
Suite 7



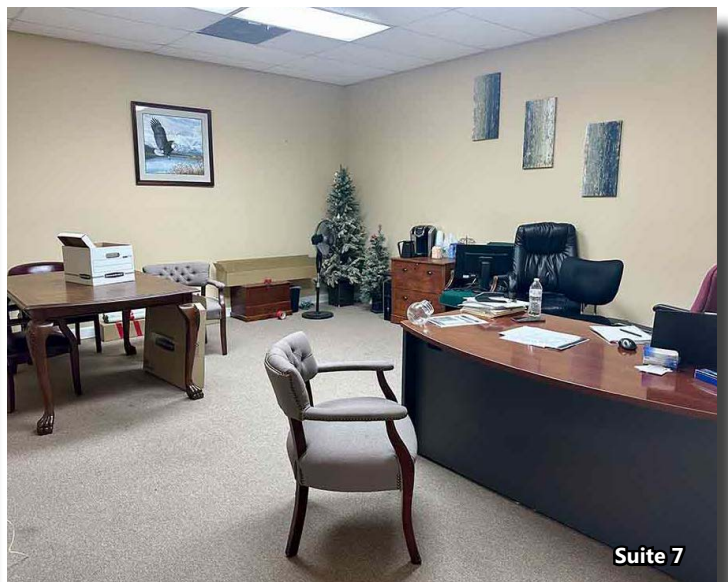
Suite 2



Suite 7



Suite 2



Suite 7



MITCH COX
REALTOR, INC.

2304 Silverdale Drive, Suite 200, Johnson City, TN 37601
423-282-6582 (o) 423-282-5903 (f) www.mitchcox.com