



10/11/2022

Lost Herd Inc.
806 W. 11th Street
Austin, TX 78701

Introduction:

Tree identification, measurement, inspection, and arboriculture consultation were performed by a board-certified master arborist team who through related training and experience are familiar with the techniques and equipment used in such operations.

TMS was contacted regarding a property currently under construction. The team wanted a better understanding of trees on site and their current condition and recommendations to assist trees through the construction process.

Assignment:

Tree Mann Solutions to inspect, identify, measure DBH, and provide condition rating with supportive notes for 6 designated trees (T806, T807, T808, T809, T810, and T811). TMS to review provided documents and make preservation/removal recommendations where warranted. Summary report with photos provided for team use.

- **T806**, a 20" pecan, is in fair condition. The pecan has a moderate amount of tip dieback throughout the canopy. There are two large pruning wounds on the S and E sides of the tree, but strong response growth is present. There is approximately 60% impervious cover surrounding the CRZ, primarily to the E. The tree is a fair candidate for preservation.
- **T807**, a 20.5" pecan, is in fair condition. Nearly 100% of the CRZ is covered with impervious material. There are small pockets of decay throughout canopy, however strong response growth is present at all these cavities. The pecan has limited amounts of tip dieback. With careful mitigation work, the pecan is a fair candidate for preservation. TMS recommends careful demolition and soil invigoration to promote root growth and to aerate the soil.
- **T808**, a 19.5" pecan, is in fair condition. Nearly 100% of the CRZ is covered with impervious material. The pecan has limited amounts of tip dieback and has been utility pruned on the E and NE. There is a moderate amount of squirrel damage throughout the canopy. With careful mitigation work, the pecan is a fair candidate for preservation. TMS recommends careful demolition and soil invigoration to promote root growth and to aerate the soil.
- **T809**, a 28" pecan, is in low fair condition. Approximately 75% of the CRZ is covered with impervious material. The pecan has been heavily utility pruned and has been left with an abnormal structure. The pecan has limited amounts of tip dieback and squirrel damage throughout the canopy. The pecan is a low fair candidate for preservation.
- **T810**, a 23.5" pecan, is in fair condition. Approximately 50% of the CRZ is covered with impervious material. There is significant poison ivy cover in the lower canopy. The pecan is moderately unbalanced SW. The pecan has limited amounts of tip dieback or deadwood accumulation. There are two limbs that have previously failed and should be clean cut. With careful mitigation work, especially on the E side of the tree, the pecan is a fair candidate for preservation. TMS recommends careful demolition and soil invigoration to promote root growth and to aerate the soil.
- **T811**, a 22" pecan, is on the neighboring property, but has an overlapping CRZ. The pecan is in fair condition, despite being heavily utility pruned to the S. The tree is a fair candidate for preservation.



Approximate locations of trees

TMS recommends designing with good data, maintaining compliance with municipal tree regulations, and promoting healthy urban canopy through quality preservation and/or mitigation with new, well-planned plantings. If you have any questions and/or concerns regarding tree assessment on this site, please reach me at (512)745-9653 or joshua@treemannsolutions.com. We are here to help!

Respectfully,

Joshua Morales

Joshua Morales | Field Arborist II

Tree Mann Solutions, LLC

ISA Certified Arborist TX-4657A

Texas Oak Wilt Qualified #410 (TXOWQ)

TDA Applicator License No. 0849823

| | |
|-----------------------|--|
| Tree Number | 806 |
| Tree Species | Pecan |
| Diameter (DBH) | 20 |
| Multi Stem | |
| Condition | Fair |
| Notes | fair structure & vigor, moderate impervious cover |
| Summary | Tree 806, a 20" pecan, is in fair condition. The pecan has a moderate amount of tip dieback throughout the canopy. There are two large pruning wounds on the S and E sides of the tree, but strong response growth is present. There is approximately 60% impervious cover surrounding the CRZ. The tree is a fair candidate for preservation. |

Photos





Individual Tree Report

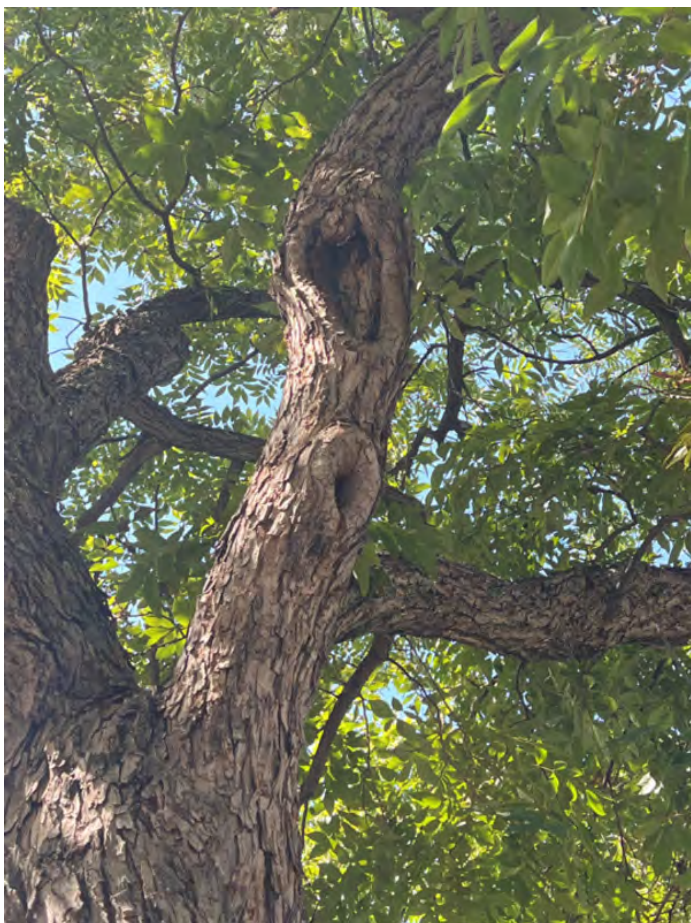
[https://fulcrumapp.io/run/53da7710-4ff3-487a-a774-e0fa30e65577?
token=8b4c3c838488c9e46f71&record_id=10712550-64d7-4857-9a56-795729e17237](https://fulcrumapp.io/run/53da7710-4ff3-487a-a774-e0fa30e65577?token=8b4c3c838488c9e46f71&record_id=10712550-64d7-4857-9a56-795729e17237)

| | |
|-----------------------|--|
| Tree Number | 807 |
| Tree Species | Pecan |
| Diameter (DBH) | 20.5 |
| Multi Stem | |
| Condition | Fair |
| Notes | fair structure & vigor, excessive impervious cover |
| Summary | Tree 807, a 20.5" pecan, is in fair condition. Nearly 100% of the CRZ is covered with impervious material. There are small pockets of decay throughout canopy. Strong response growth is present at all these cavities. The pecan has limited amounts of tip dieback. With careful mitigation work, the pecan is a fair candidate for preservation. TMS recommends careful demolition and soil invigoration to promote root growth and to aerate the soil. |

Photos







Individual Tree Report

[https://fulcrumapp.io/run/53da7710-4ff3-487a-a774-e0fa30e65577?
token=8b4c3c838488c9e46f71&record_id=778ea2a2-1056-4e1e-853b-49fe60d94e20](https://fulcrumapp.io/run/53da7710-4ff3-487a-a774-e0fa30e65577?token=8b4c3c838488c9e46f71&record_id=778ea2a2-1056-4e1e-853b-49fe60d94e20)

| | |
|-----------------------|--|
| Tree Number | 808 |
| Tree Species | Pecan |
| Diameter (DBH) | 19.5 |
| Multi Stem | |
| Condition | Fair |
| Notes | fair structure & vigor, excessive impervious cover, utility pruned |
| Summary | Tree 808, a 19.5" pecan, is in fair condition. Nearly 100% of the CRZ is covered with impervious material. The pecan has limited amounts of tip dieback and has been utility pruned on the E and NE. There is a moderate amount of squirrel damage throughout the canopy. With careful mitigation work, the pecan is a fair candidate for preservation. TMS recommends careful demolition and soil invigoration to promote root growth and to aerate the soil. |

Photos

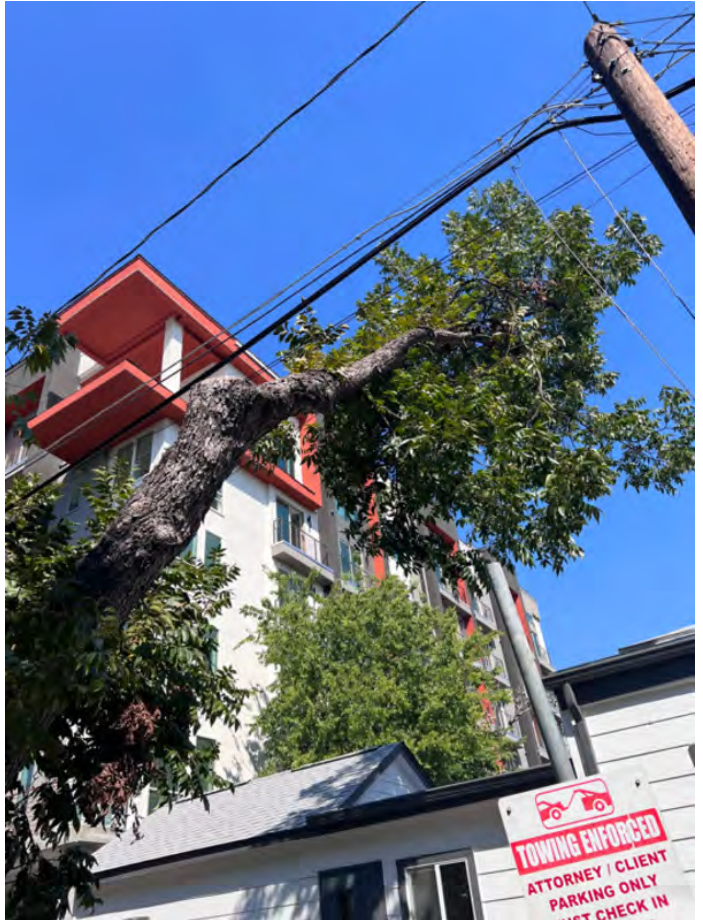


Individual Tree Report

[https://fulcrumapp.io/run/53da7710-4ff3-487a-a774-e0fa30e65577?
token=8b4c3c838488c9e46f71&record_id=6c74dcb5-c8d2-4e73-a2b7-657b4a413a45](https://fulcrumapp.io/run/53da7710-4ff3-487a-a774-e0fa30e65577?token=8b4c3c838488c9e46f71&record_id=6c74dcb5-c8d2-4e73-a2b7-657b4a413a45)

| | |
|-----------------------|--|
| Tree Number | 809 |
| Tree Species | Pecan |
| Diameter (DBH) | 28 |
| Multi Stem | |
| Condition | Fair |
| Notes | excessive impervious cover, utility pruned, fair vigor, poor structure |
| Summary | Tree 809, a 28" pecan, is in low fair condition. Approximately 75% of the CRZ is covered with impervious material. The pecan has been heavily utility pruned and been left with an abnormal structure. The pecan has limited amounts of tip dieback and squirrel damage throughout the canopy. The pecan is a low fair candidate for preservation. |

Photos





Individual Tree Report

[https://fulcrumapp.io/run/53da7710-4ff3-487a-a774-e0fa30e65577?
token=8b4c3c838488c9e46f71&record_id=ef9bb231-02e9-4c59-b424-0e3b8b00da59](https://fulcrumapp.io/run/53da7710-4ff3-487a-a774-e0fa30e65577?token=8b4c3c838488c9e46f71&record_id=ef9bb231-02e9-4c59-b424-0e3b8b00da59)

| | |
|-----------------------|--|
| Tree Number | 810 |
| Tree Species | Pecan |
| Diameter (DBH) | 23.5 |
| Multi Stem | |
| Condition | Fair |
| Notes | fair structure & vigor, significant impervious cover, significant vine cover |
| Summary | Tree 810, a 23.5" pecan, is in fair condition. Approximately 50% of the CRZ is covered with impervious material. There is significant poison ivy cover in the lower canopy. The pecan is moderately unbalanced SW. The pecan has limited amounts of tip dieback or deadwood accumulation. There are two limbs that have previously failed and should be clean cut. With careful mitigation work especially on the E side of the tree, the pecan is a fair candidate for preservation. TMS recommends careful demolition and soil invigoration to promote root growth and to aerate the soil. |

Photos



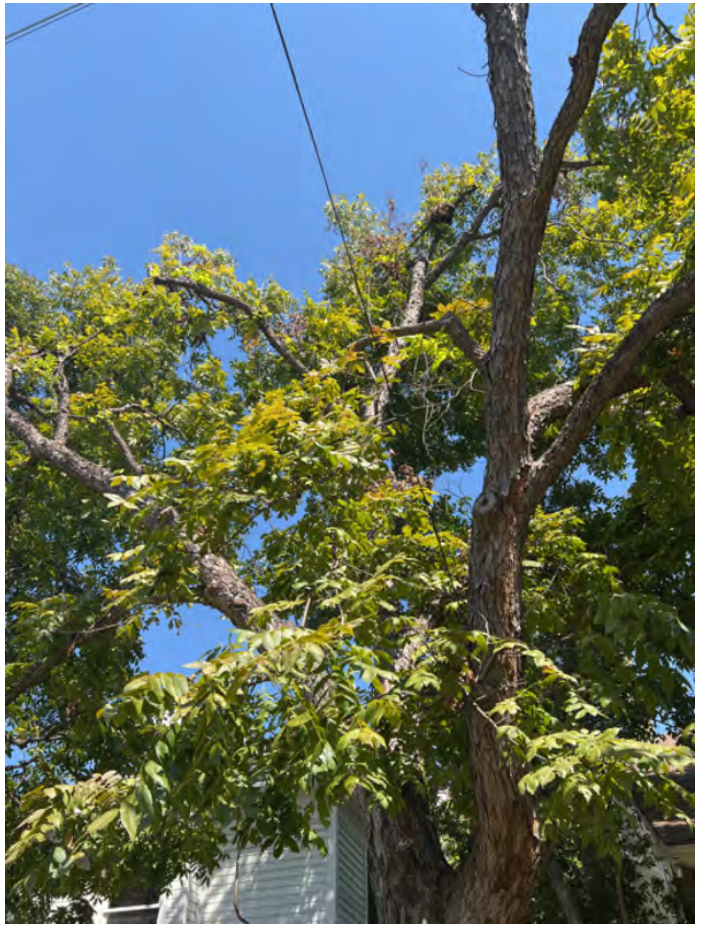


Individual Tree Report

[https://fulcrumapp.io/run/53da7710-4ff3-487a-a774-e0fa30e65577?
token=8b4c3c838488c9e46f71&record_id=3f0da61b-40ea-41b9-87af-20a83ceb09a8](https://fulcrumapp.io/run/53da7710-4ff3-487a-a774-e0fa30e65577?token=8b4c3c838488c9e46f71&record_id=3f0da61b-40ea-41b9-87af-20a83ceb09a8)

| | |
|-----------------------|--|
| Tree Number | 811 |
| Tree Species | Pecan |
| Diameter (DBH) | 22 |
| Multi Stem | |
| Condition | Fair |
| Notes | |
| Summary | Tree is in neighboring property, but has an overlapping CRZ. The pecan is in fair condition, despite being heavily utility pruned to the S. Tree is a fair candidate for preservation. |

Photos



Individual Tree Report

[https://fulcrumapp.io/run/53da7710-4ff3-487a-a774-e0fa30e65577?
token=8b4c3c838488c9e46f71&record_id=793f67cb-e0f1-4ae2-a1a1-fd5e1810b8d7](https://fulcrumapp.io/run/53da7710-4ff3-487a-a774-e0fa30e65577?token=8b4c3c838488c9e46f71&record_id=793f67cb-e0f1-4ae2-a1a1-fd5e1810b8d7)