

2682

# REDWOOD JUNCTION

2682 - 2694 MIDDLEFIELD ROAD  
REDWOOD CITY, CALIFORNIA

FOR MORE INFORMATION, PLEASE CONTACT:

**ROBERT MCSWEENEY**  
+1 650 577 2928  
bob.mcsweeney@cbre.com  
Lic. 00934240

**KARL HANSEN**  
+1 415 706 6734  
karl.hansen@cbre.com  
Lic. 01351383

**MATT MURRAY**  
+1 408 781 9322  
matt.murray@cbre.com  
Lic. 02083830

# PROJECT FEATURES

- Office, Warehouse, R&D/Lab, and Recreational uses
- Grade-level and Dock-high loading
- Over 2/1000 Parking Ratio
- Well-maintained professional business environment
- Park-like setting with mature attractive landscaping
- Local and responsive ownership
- Skylights and full building fire sprinkler systems



©2024 CBRE, Inc. All rights reserved. This information has been obtained from sources believed reliable, but has not been verified for accuracy or completeness. You should conduct a careful, independent investigation of the property and verify all information. Any reliance on this information is solely at your own risk. CBRE and the CBRE logo are service marks of CBRE, Inc. All other marks displayed on this document are the property of their respective owners, and the use of such logos does not imply any affiliation with or endorsement of CBRE. Photos herein are the property of their respective owners. Use of these images without the express written consent of the owner is prohibited.



FOR MORE INFORMATION, PLEASE CONTACT:

**ROBERT MCSWEENEY**  
+1 650 577 2928  
bob.mcsweeney@cbre.com  
Lic. 00934240

**KARL HANSEN**  
+1 415 706 6734  
karl.hansen@cbre.com  
Lic. 01351383

**MATT MURRAY**  
+1 408 781 9322  
matt.murray@cbre.com  
Lic. 02083830

# SITE PLAN

- A** 2682 MIDDLEFIELD RD
- B** 2684 MIDDLEFIELD RD
- C** 2694 MIDDLEFIELD RD
- D** 2686 MIDDLEFIELD RD
- E** 2688 MIDDLEFIELD RD
- F** 2690 MIDDLEFIELD RD
- G** 2692 MIDDLEFIELD RD



FOR MORE INFORMATION, PLEASE CONTACT:

**ROBERT MCSWEENEY**  
+1 650 577 2928  
bob.mcsweeney@cbre.com  
Lic. 00934240

**KARL HANSEN**  
+1 415 706 6734  
karl.hansen@cbre.com  
Lic. 01351383

**MATT MURRAY**  
+1 408 781 9322  
matt.murray@cbre.com  
Lic. 02083830

# 2686 MIDDLEFIELD RD



- 18,200 SF Freestanding Office and Wet Lab Building including benches, sinks, 1 fume hood, 5 biosafety cabinets and 3 centrifuges
- 5,600 SF Wet Lab Area
- 3,000 SF Storage Area
- 9,600 SF Office, Restroom and Break Room Area with furniture and AV infrastructure
- Office to Lab conversion and additional landlord funded improvements available
- Divisible to 2,950, 8,000 and 10,200 SF
- 3 Drive In Doors
- 18' ceiling with exposed ducting HVAC in office and skylights throughout
- 3 Phase 1200 Amps 120/208 Volt Electrical Service to Building

## FOR MORE INFORMATION, PLEASE CONTACT:

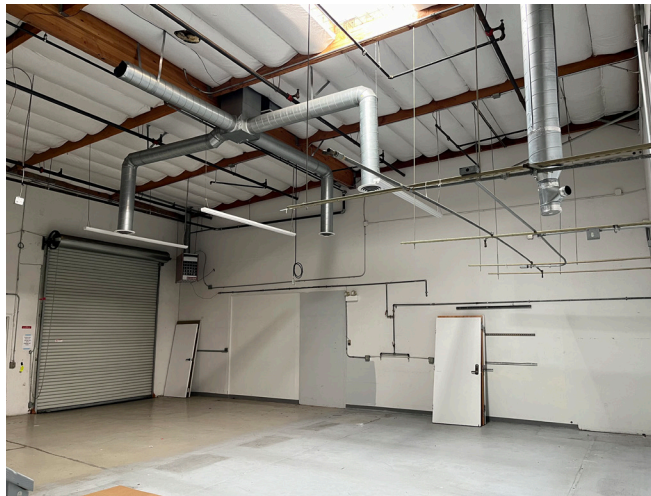
**ROBERT MCSWEENEY**  
+1 650 577 2928  
bob.mcsweeney@cbre.com  
Lic. 00934240

**KARL HANSEN**  
+1 415 706 6734  
karl.hansen@cbre.com  
Lic. 01351383

**MATT MURRAY**  
+1 408 781 9322  
matt.murray@cbre.com  
Lic. 02083830

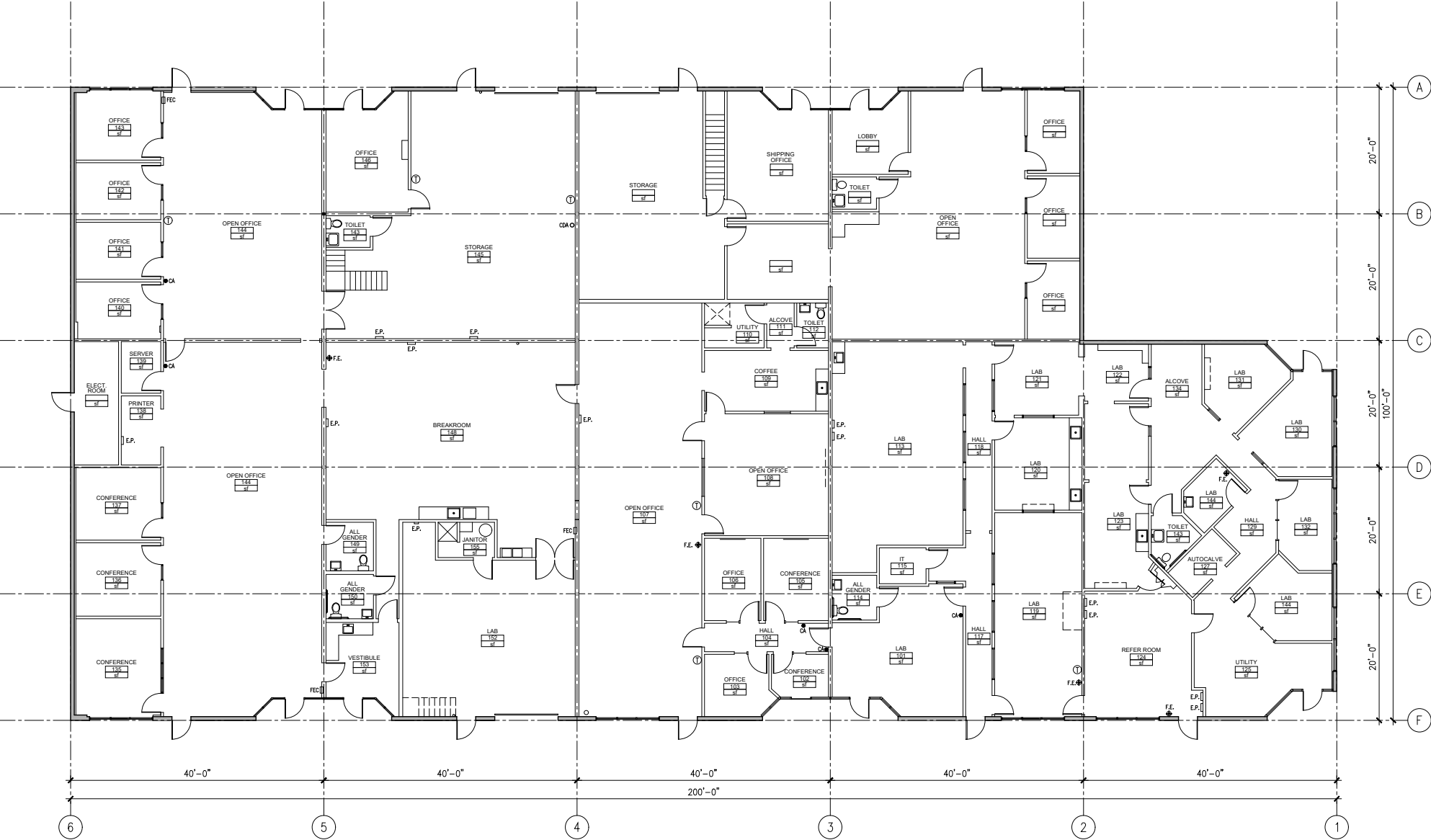


# 2686 MIDDLEFIELD RD



# 2686 MIDDLEFIELD RD

## EXISTING LAYOUT

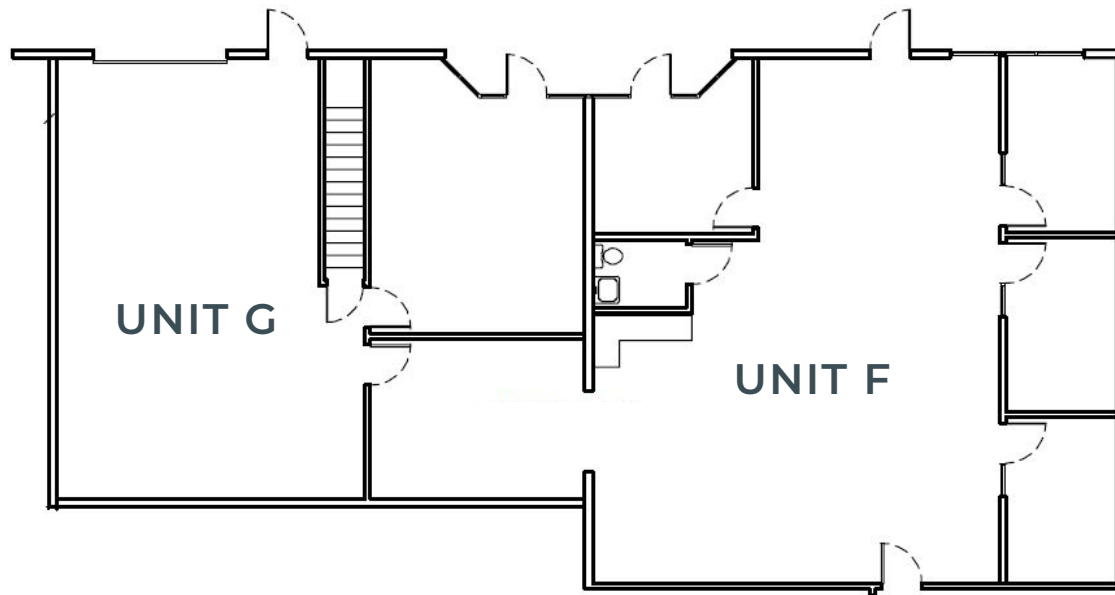








# 2686 MIDDLEFIELD RD UNITS F & G



- ±2,950 SF Flex/Medical Device space
- Entire space temperature-controlled
- 18' ceiling height in open areas
- 5 Private offices, 1 Conference room, 1 Restroom, Storage room, and a Reception Area
- Landlord-funded improvements available
- Rental Rate: \$2.50/SF/Mo. NNN
- Estimated OPEX: \$0.35/SF/Mo.

FOR MORE INFORMATION, PLEASE CONTACT:

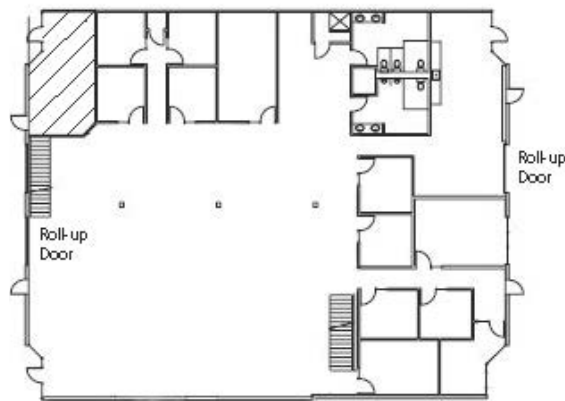
**ROBERT MCSWEENEY**  
+1 650 577 2928  
bob.mcsweeney@cbre.com  
Lic. 00934240

**KARL HANSEN**  
+1 415 706 6734  
karl.hansen@cbre.com  
Lic. 01351383

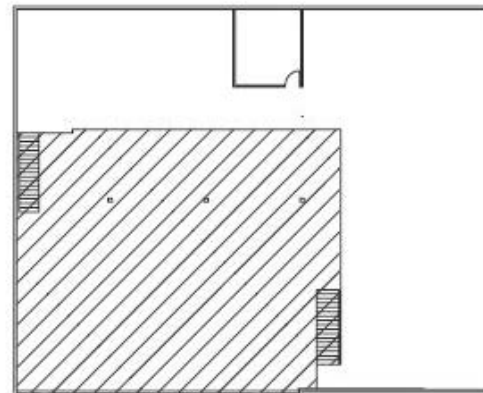
**MATT MURRAY**  
+1 408 781 9322  
matt.murray@cbre.com  
Lic. 02083830



# 2688 MIDDLEFIELD RD UNIT C



FIRST FLOOR



SECOND FLOOR

- ±11,600 SF R&D/Office suite
- Mix of R&D/Lab area, open office, privates/meeting rooms
- 20' ceilings with skylights and exposed sheet metal HVAC ducting
- Roll-up doors in front and rear of suite
- Server room and wiring in place
- Direct entrance from outside
- Rear patio/barbeque area and abundant parking
- Kitchen, Men's/Women's restrooms, and shower room
- Landlord funded improvements available
- Rental Rate: \$2.25/SF/Mo. NNN
- Estimated OPEX: \$0.35/SF/Mo.

FOR MORE INFORMATION, PLEASE CONTACT:

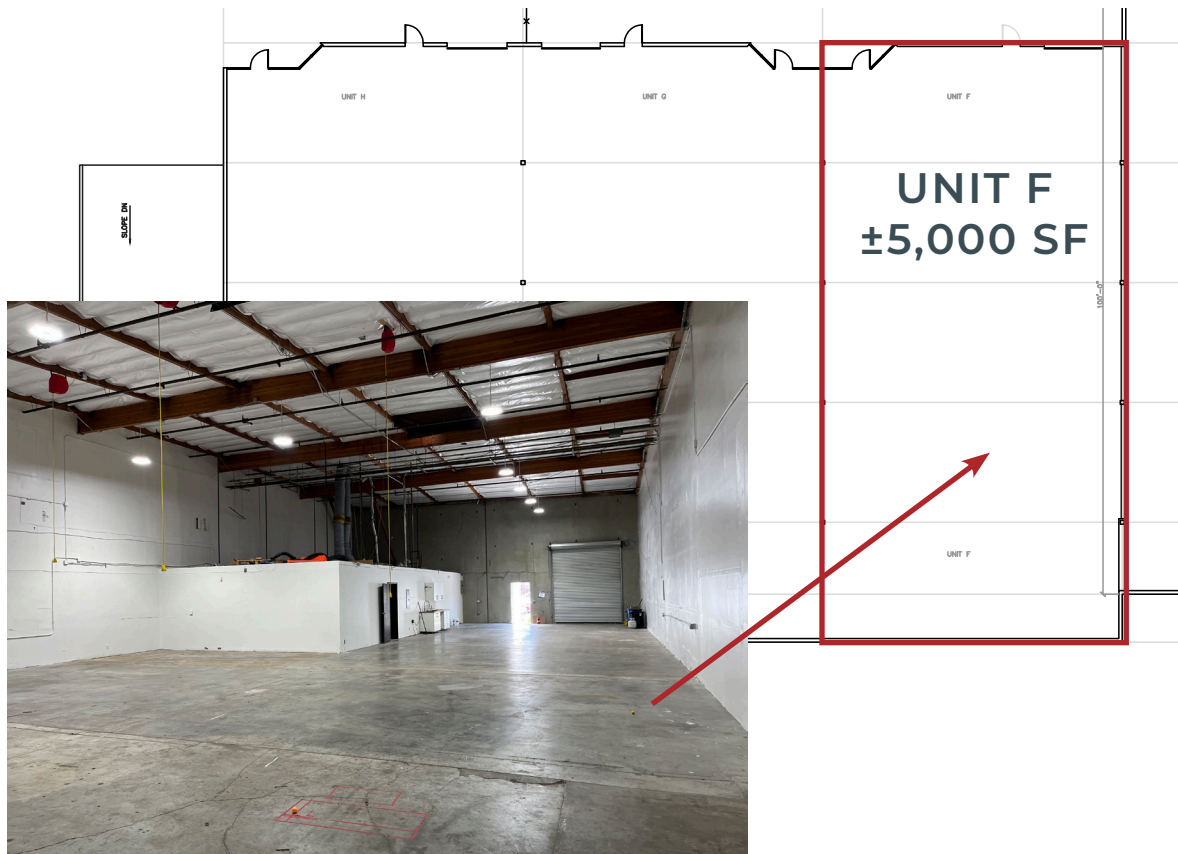
**ROBERT MCSWEENEY**  
+1 650 577 2928  
bob.mcsweeney@cbre.com  
Lic. 00934240

**KARL HANSEN**  
+1 415 706 6734  
karl.hansen@cbre.com  
Lic. 01351383

**MATT MURRAY**  
+1 408 781 9322  
matt.murray@cbre.com  
Lic. 02083830



# 2694 MIDDLEFIELD RD UNIT F



- ±5,000 SF Office/Warehouse space
- ±1,100 SF HVAC Office Area with 3 Private Offices, Open Area, and Restroom
- ±3,900 SF Warehouse Area
- 1 Drive-in door
- Sprinklers and Skylights
- Premises Dimensions: 50' wide and 100' deep
- Sink + Countertop in warehouse
- Power drops in warehouse
- 22' Clear Height
- New LED lighting
- Insulated warehouse ceiling
- Rental Rate: \$2.15/SF/Mo. NNN
- Estimated OPEX: \$0.30/SF/Mo.

FOR MORE INFORMATION, PLEASE CONTACT:

**ROBERT MCSWEENEY**  
+1 650 577 2928  
bob.mcsweeney@cbre.com  
Lic. 00934240

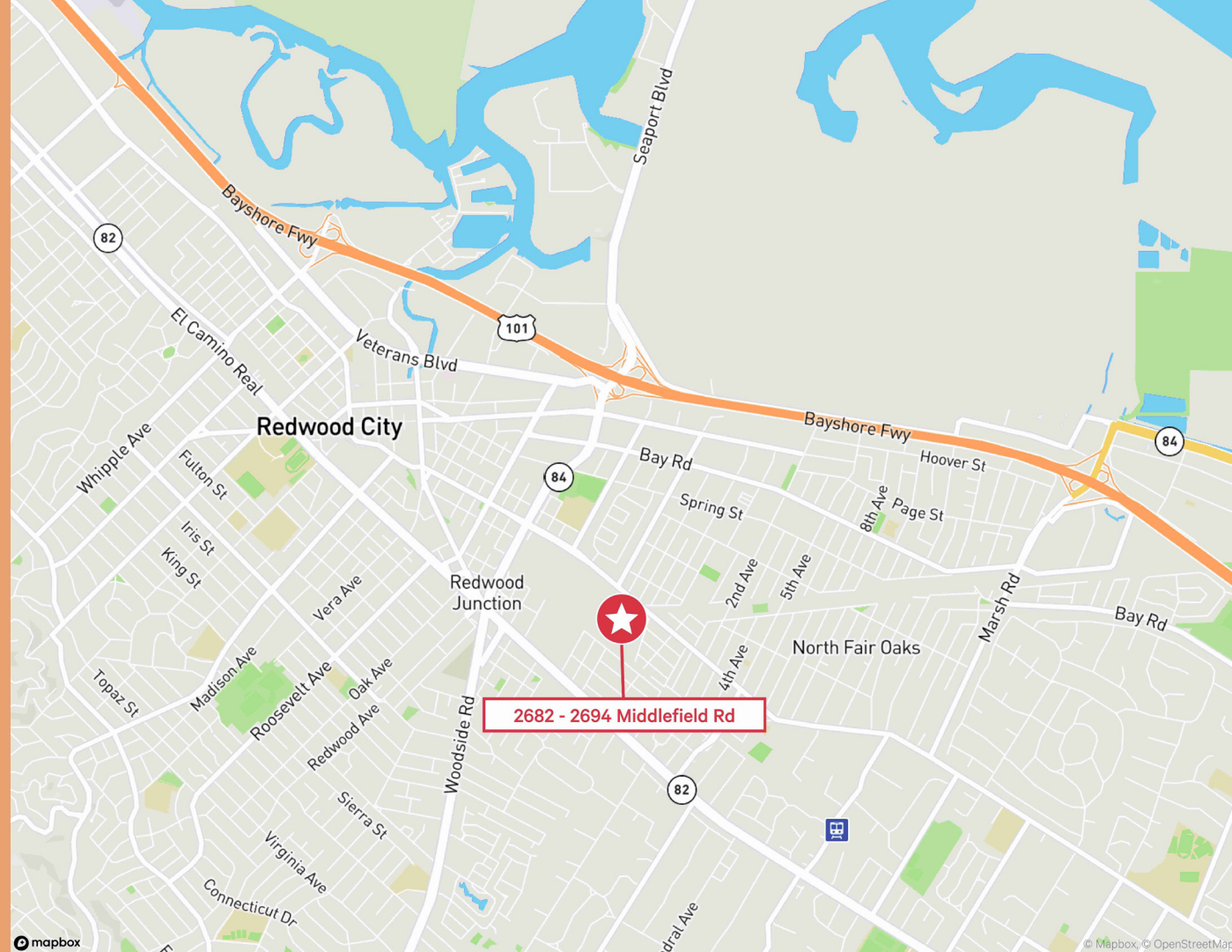
**KARL HANSEN**  
+1 415 706 6734  
karl.hansen@cbre.com  
Lic. 01351383

**MATT MURRAY**  
+1 408 781 9322  
matt.murray@cbre.com  
Lic. 02083830



# LOCATION

Redwood Junction is centrally located on the San Francisco Peninsula off of Highway 101. The park is 20 minutes south of San Francisco International Airport and approximately 20 minutes north of San Jose International Airport. The property is located off the Woodside Road exit of Highway 101, and within 5 minutes of the Dumbarton Bridge, offering convenient access to many parts of the Bay Area.



## FOR MORE INFORMATION, PLEASE CONTACT:

**ROBERT MCSWEENEY**  
+1 650 577 2928  
bob.mcsweeney@cbre.com  
Lic. 00934240

**KARL HANSEN**  
+1 415 706 6734  
karl.hansen@cbre.com  
Lic. 01351383

**MATT MURRAY**  
+1 408 781 9322  
matt.murray@cbre.com  
Lic. 02083830