



# PROSPECT PLACE



2953 BUNKER HILL LANE, SANTA CLARA, CALIFORNIA



## PROJECT HIGHLIGHTS

- ±116,888 SF Multi-Tenant Building
- Major Interior & Exterior Renovations Complete
- Furnished Market Ready Suites Available
- 4/1,000 Parking with Rare Covered Parking
- 12 EV Charging Stations
- Grade Level Loading
- Minutes From a Variety of Hotels & Restaurants
- Accessible to HWY 101 and HWY 237





## AVAILABILITIES

### Multiple Configurations and Contiguous Space Available from $\pm 4,047$ SF to $\pm 24,514$ SF

- **Suite 202:**  $\pm 4,047$  SF — Market Ready
- **Floor 4:**  $\pm 20,467$  SF / Divisible
  - **Suite 401:**  $\pm 8,124$  SF
  - **Suite 405:**  $\pm 6,879$  SF
  - **Suite 407:**  $\pm 5,464$  SF





New Entryway,  
Outdoor Amenity Area,  
Common Areas &  
Dramatic 2-Story Lobby





MARKET READY SUITES

Bright Workspaces,  
Efficient Floor Plans &  
Premium Finishes





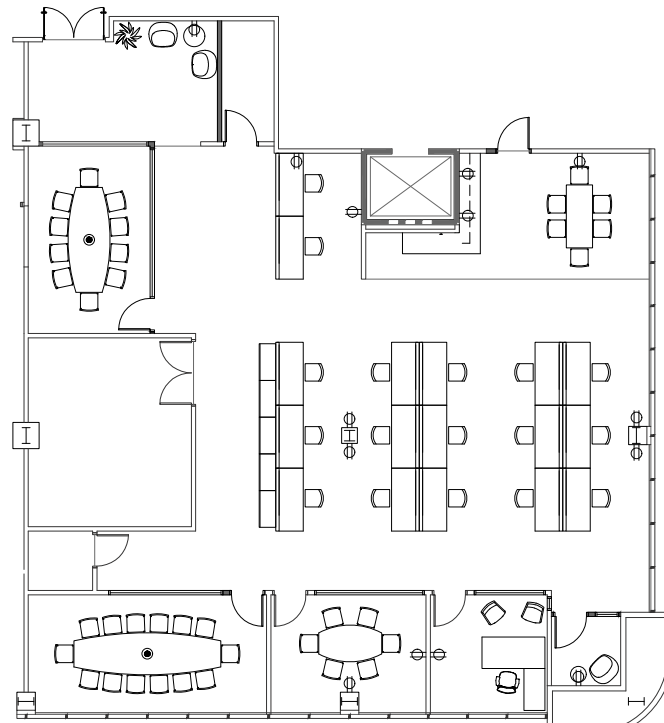
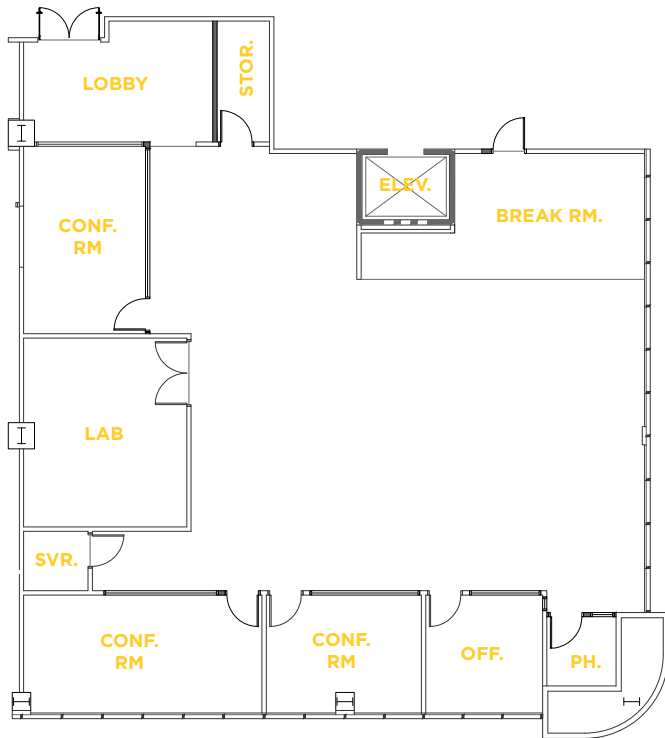
SUITE 202

- 3 Conference Rooms
- 1 Private Office
- Break Room
- Server Room
- Storage Room
- Lobby
- Open Office Area
- Lab

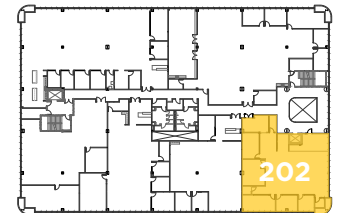
±4,047 SF

MARKET READY

360°  
VIEW VIRTUAL TOUR



CONCEPTUAL FURNITURE PLAN



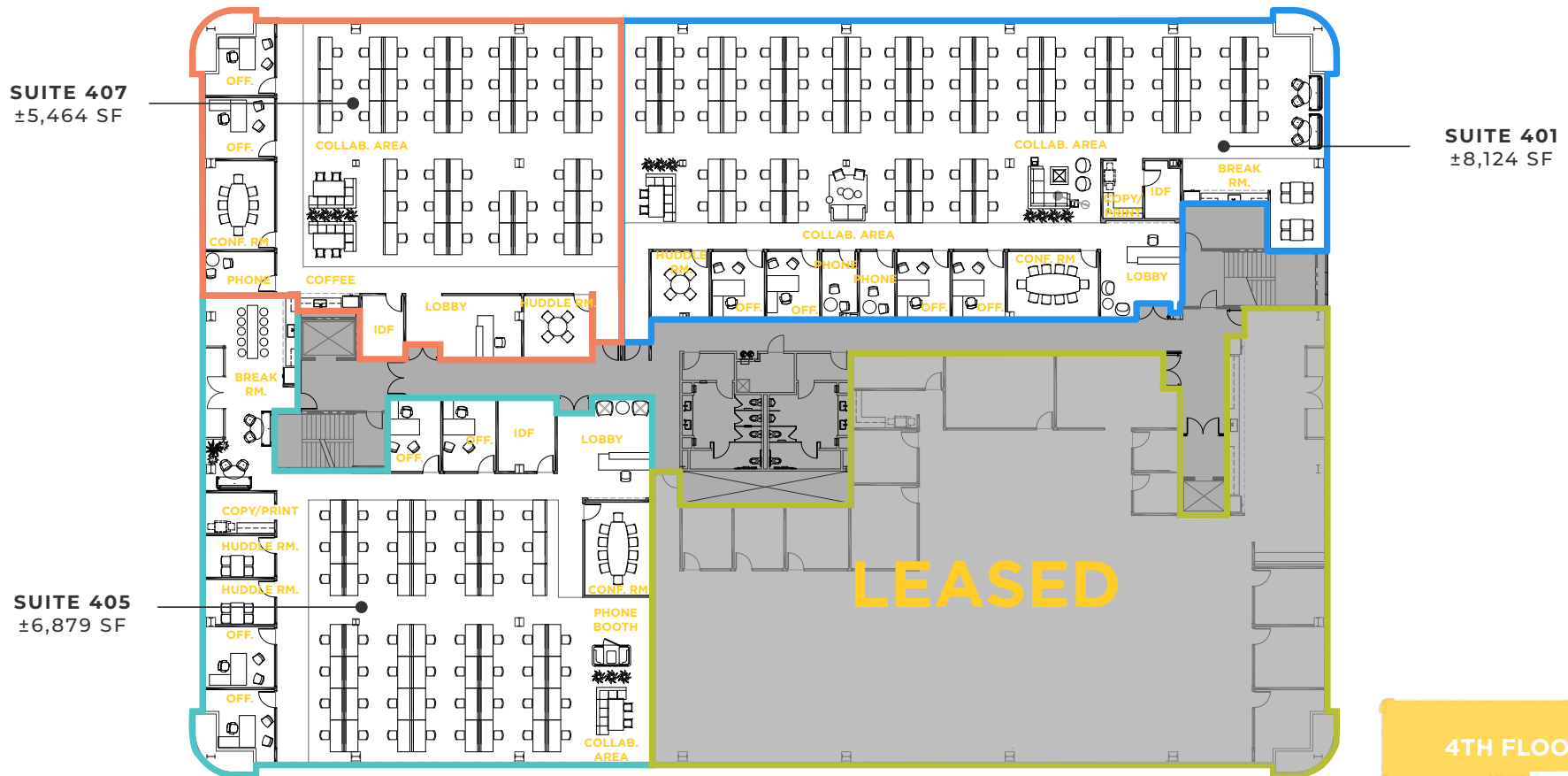
BUNKER HILL LANE



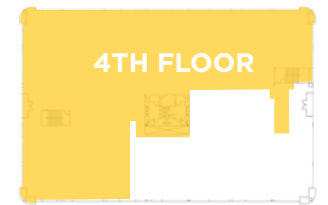
4TH FLOOR

SPEC MARKET READY PLAN  
SUITE 407 & 401 EST. COMPLETION Q1 2026

±5,464 SF – ±20,467 SF



DEMISING/CONCEPTUAL FURNITURE PLAN



4TH FLOOR

BUNKER HILL LANE



# AMENITIES



# PROSPECT PLACE

- Taco Bell
- Joe's Chinese
- Togo's Loop Convenient Store
- Bawarchi Indian

- Hyatt Regency
- Truya Sushi
- Evolution Café & Bar @The Market

- Amarin Thai
- Café Falafel
- House of Bagels
- Iguanas
- Round Table Pizza
- Togo's

- In-N-Out
- Tomatina
- Subway
- Panda Express
- Mexicali Grill
- Jamba Juice
- Starbucks
- SmokeEaters
- Krispy Kreme
- World Wrapps
- YoYo Sushi
- Ben & Jerry's

- Whole Foods
- Specialty's Café & Bakery
- Fleming's Steakhouse
- Opa!
- Il Fornaio
- Puesto

237

Polycomm Cafe

1 OZ Coffee

Stadium Tech Cafe

Embassy Suites

Planned Retail & Residential

Mission College

Great America

Great America Parkway

Lawrence Expressway

Tasman Drive

Lafayette Street

Montague Expressway

101

Bourbon Steak

Levi's Stadium

Hilton La Fontana

Marriott Parcel 104

Future Retail Element Hotel

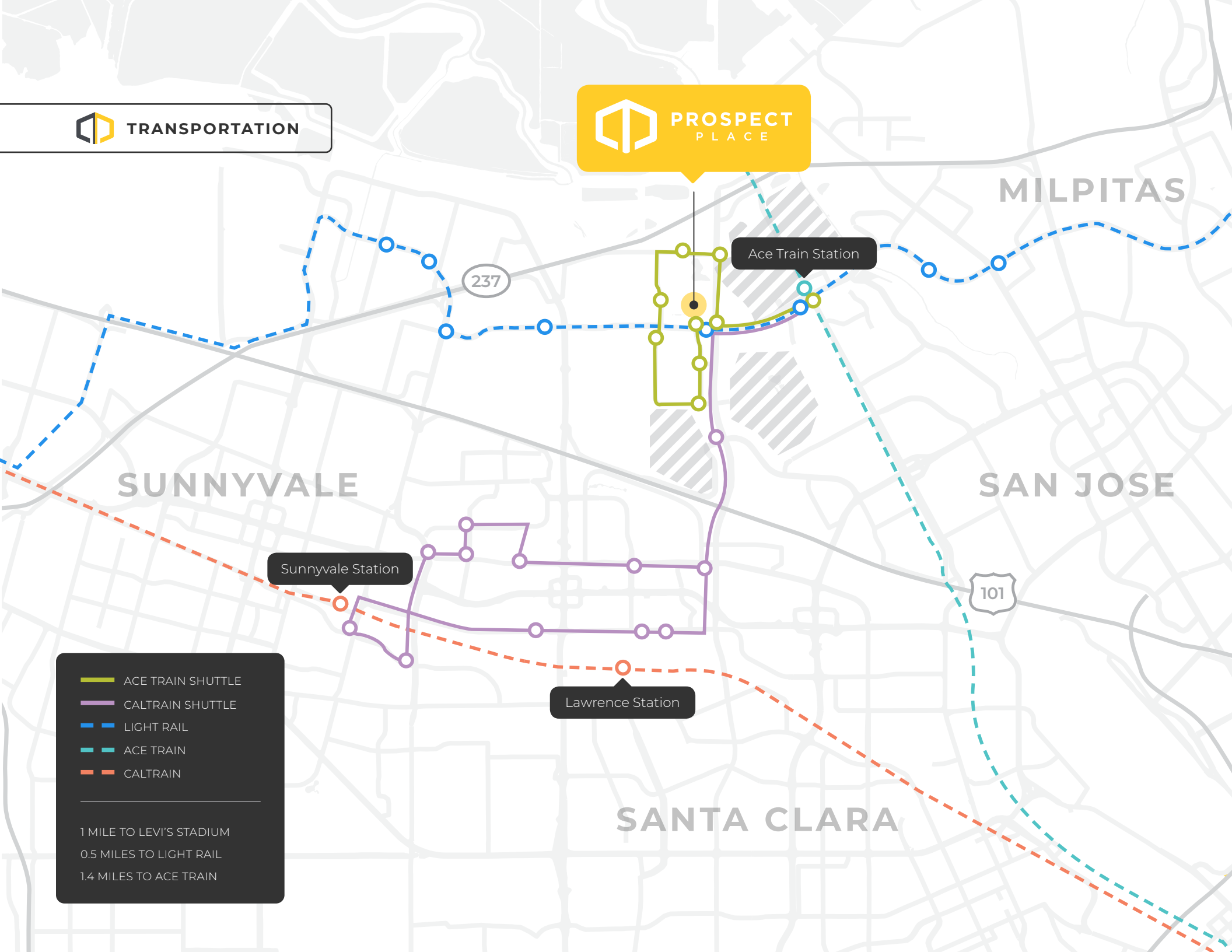
Specialty's Cafe & Bakery

Pedro's Mexican Birk's

- Target
- Panera
- Five Guys
- Sweet Tomatoes
- Chipotle
- Premier Pizza
- Coffee Bean & Tea Leaf
- CVS
- Chick-Fil-A
- Fresh & Easy
- Rok
- Hyatt House
- Courtyard Marriott

- Starbucks
- Safeway
- Fantasia Coffee & Tea
- Red Robin Gourmet Burgers
- Piatti
- Cold Stone Creamery
- Peet's Coffee
- Smashburger
- Premier Pizza
- Jamba Juice
- The Prolific Oven
- Chipotle Mexican Grill
- Mezbaan Bar & Indian
- Posh Bagel
- Yo Yo Sushi
- Jersey Mike's Subs
- Yan Can Asian Bistro
- Hyatt House

 PROSPECT PLACE



MILPITAS

SUNNYVALE

SAN JOSE

SANTA CLARA

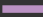



Sunnyvale Station

Ace Train Station

Lawrence Station

237

101

-  ACE TRAIN SHUTTLE
-  CALTRAIN SHUTTLE
-  LIGHT RAIL
-  ACE TRAIN
-  CALTRAIN

---

1 MILE TO LEVI'S STADIUM  
0.5 MILES TO LIGHT RAIL  
1.4 MILES TO ACE TRAIN



# PROSPECT PLACE

## BRANDON BAIN

408 615 3416  
brandon.bain@cushwake.com  
LIC #01308375

## ERIK HALLGRIMSON

408 615 3435  
erik.hallgrimson@cushwake.com  
LIC #01274540

## WALT STEPHENSON

408 615 3458  
walt.stephenson@cushwake.com  
LIC #01793438



BUCHANAN STREET  
PARTNERS

©2025 Cushman & Wakefield. All rights reserved. The information contained in this communication is strictly confidential. This information has been obtained from sources believed to be reliable but has not been verified. NO WARRANTY OR REPRESENTATION, EXPRESS OR IMPLIED, IS MADE AS TO THE CONDITION OF THE PROPERTY (OR PROPERTIES) REFERENCED HEREIN OR AS TO THE ACCURACY OR COMPLETENESS OF THE INFORMATION CONTAINED HEREIN, AND SAME IS SUBMITTED SUBJECT TO ERRORS, OMISSIONS, CHANGE OF PRICE, RENTAL OR OTHER CONDITIONS, WITHDRAWAL WITHOUT NOTICE, AND TO ANY SPECIAL LISTING CONDITIONS IMPOSED BY THE PROPERTY OWNER(S). ANY PROJECTIONS, OPINIONS OR ESTIMATES ARE SUBJECT TO UNCERTAINTY AND DO NOT SIGNIFY CURRENT OR FUTURE PROPERTY PERFORMANCE. COE-PM-West-12.16.2025

2953 BUNKER HILL LANE, SANTA CLARA, CALIFORNIA