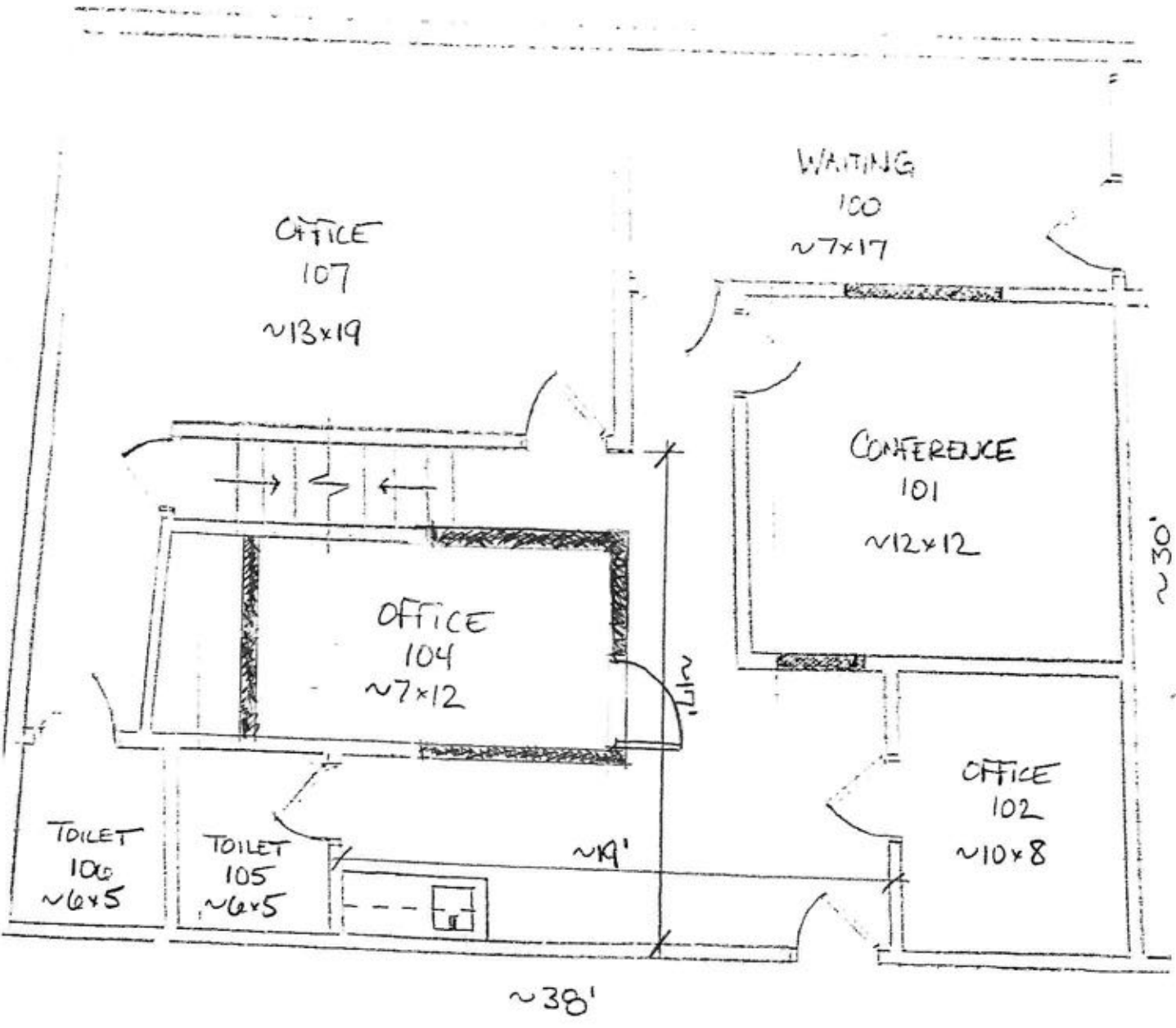


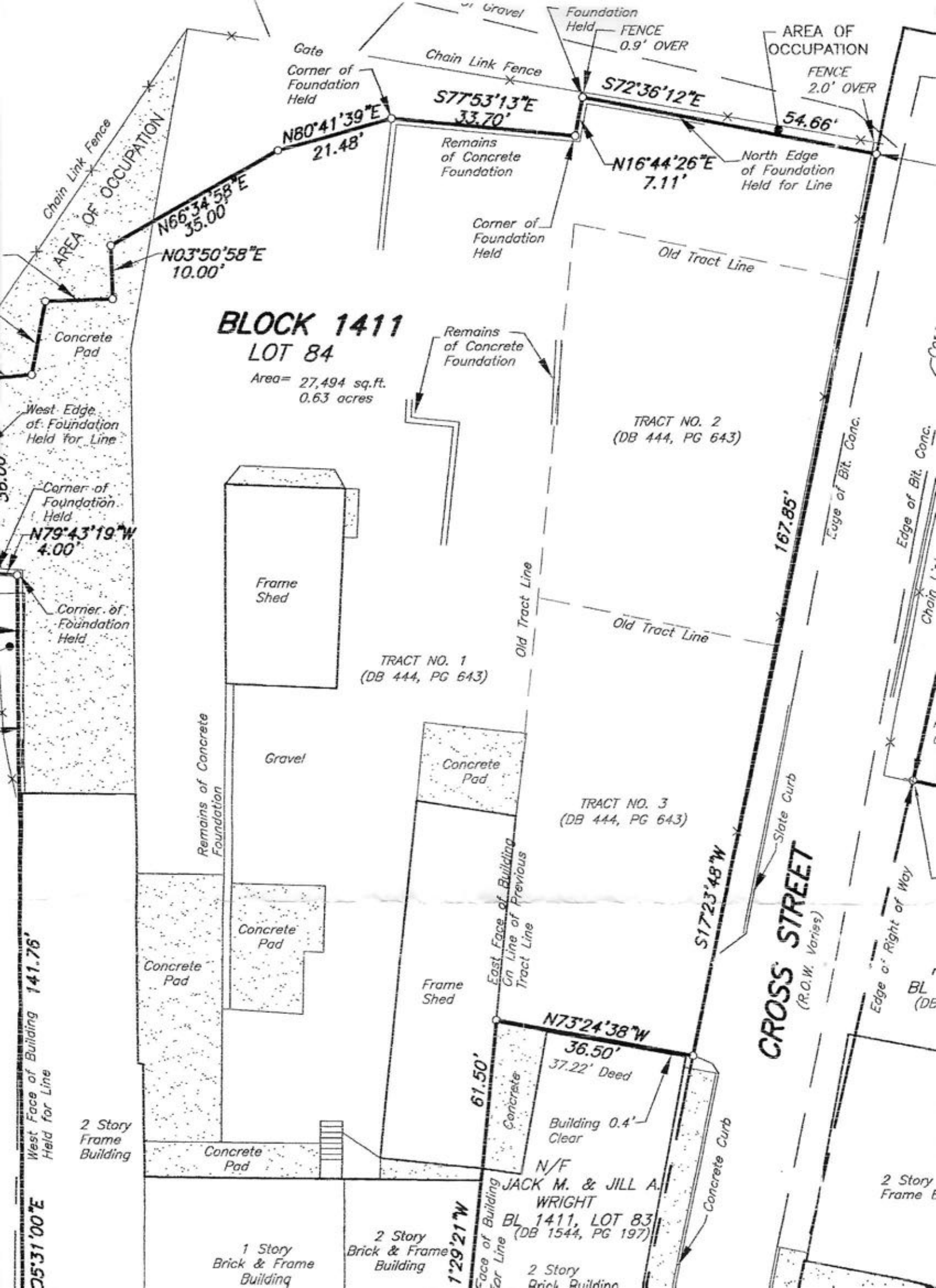
309 A SOUTH MAIN ST
2ND FLOOR - PROPOSED
12/17/2014

SCALE $\frac{3}{16}'' = 1'0''$



309 A. SOUTH MAIN ST
 1ST FLOOR - PROPOSED
 12/17/2014

SCALE 3/16" = 1'0"



BLOCK 1411
LOT 84

Area= 27,494 sq.ft.
0.63 acres

TRACT NO. 1
(DB 444, PG 643)

TRACT NO. 2
(DB 444, PG 643)

TRACT NO. 3
(DB 444, PG 643)

JACK M. & JILL A. WRIGHT
BL 1411, LOT 83
(DB 1544, PG 197)

CROSS STREET
(R.O.W. Varies)

West Face of Building 141.76'
Held for Line

05°31'00"E

Chain Link Fence

AREA OF OCCUPATION

Concrete Pad

West Edge of Foundation Held for Line

Corner of Foundation Held

Corner of Foundation Held

Remains of Concrete Foundation

Frame Shed

Gravel

Concrete Pad

Frame Shed

Concrete Pad

Concrete Pad

2 Story Frame Building

1 Story Brick & Frame Building

2 Story Brick & Frame Building

2 Story Brick Building

Gate
Corner of Foundation Held

Chain Link Fence

S77°53'13"E
33.70'

Remains of Concrete Foundation

Corner of Foundation Held

Remains of Concrete Foundation

Foundation Held

FENCE 0.9' OVER

S72°36'12"E
54.66'

AREA OF OCCUPATION

FENCE 2.0' OVER

North Edge of Foundation Held for Line

N16°44'26"E
7.11'

Old Tract Line

Old Tract Line

Old Tract Line

167.85'

Edge of Bit. Conc.

Edge of Bit. Conc.

Slate Curb

S17°23'48"W

East Face of Building On Line of Previous Tract Line

N73°24'38"W

36.50'
37.22' Deed

Building 0.4' Clear

N/F

61.50'

Face of Building for Line

Concrete Curb

Edge of Right of Way

2 Story Frame B

