

**AVAILABLE SPACES****SECOND FLOOR - SUITE 104****5,000 SF****LOCATION HIGHLIGHTS**

- Build-to-suit opportunity located on industrial campus with 24/7 access
- Second Floor office space with natural light and en-suite bathrooms
- Abundant surface-level parking
- Proximity to LIE; Seaford/Oyster Bay Expressway and Northern State Parkway; Bethpage and Hicksville Long Island Railroad Stations ; 30 mins to all major airports

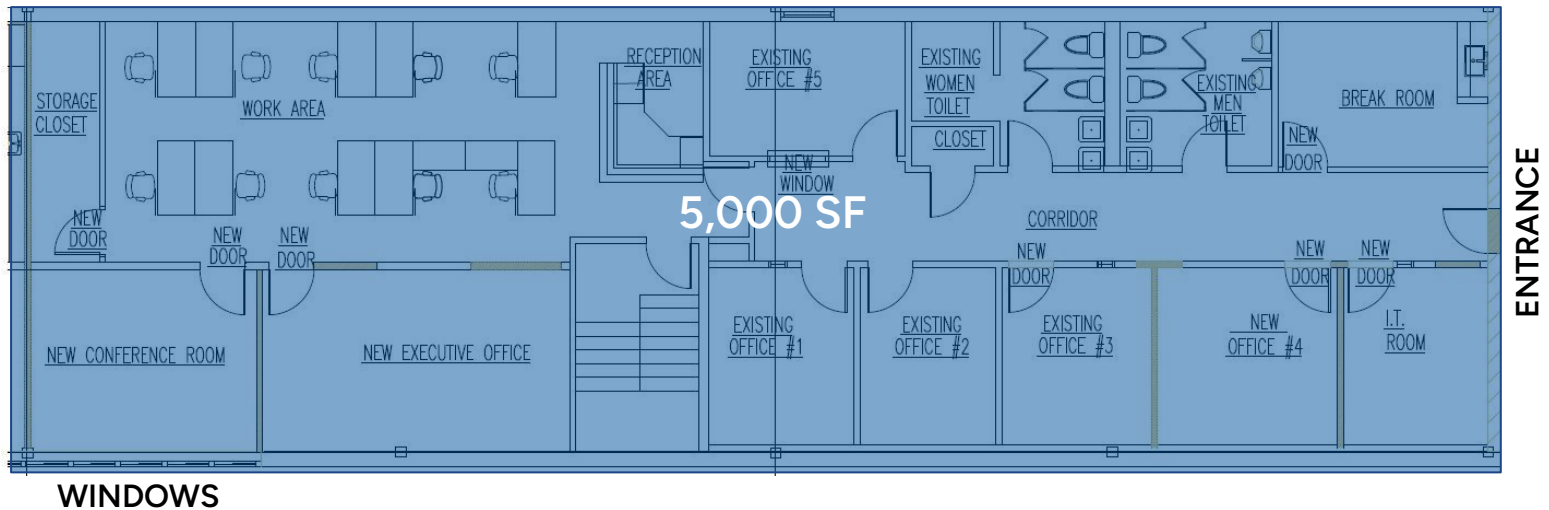
LEASE RATE Upon Request

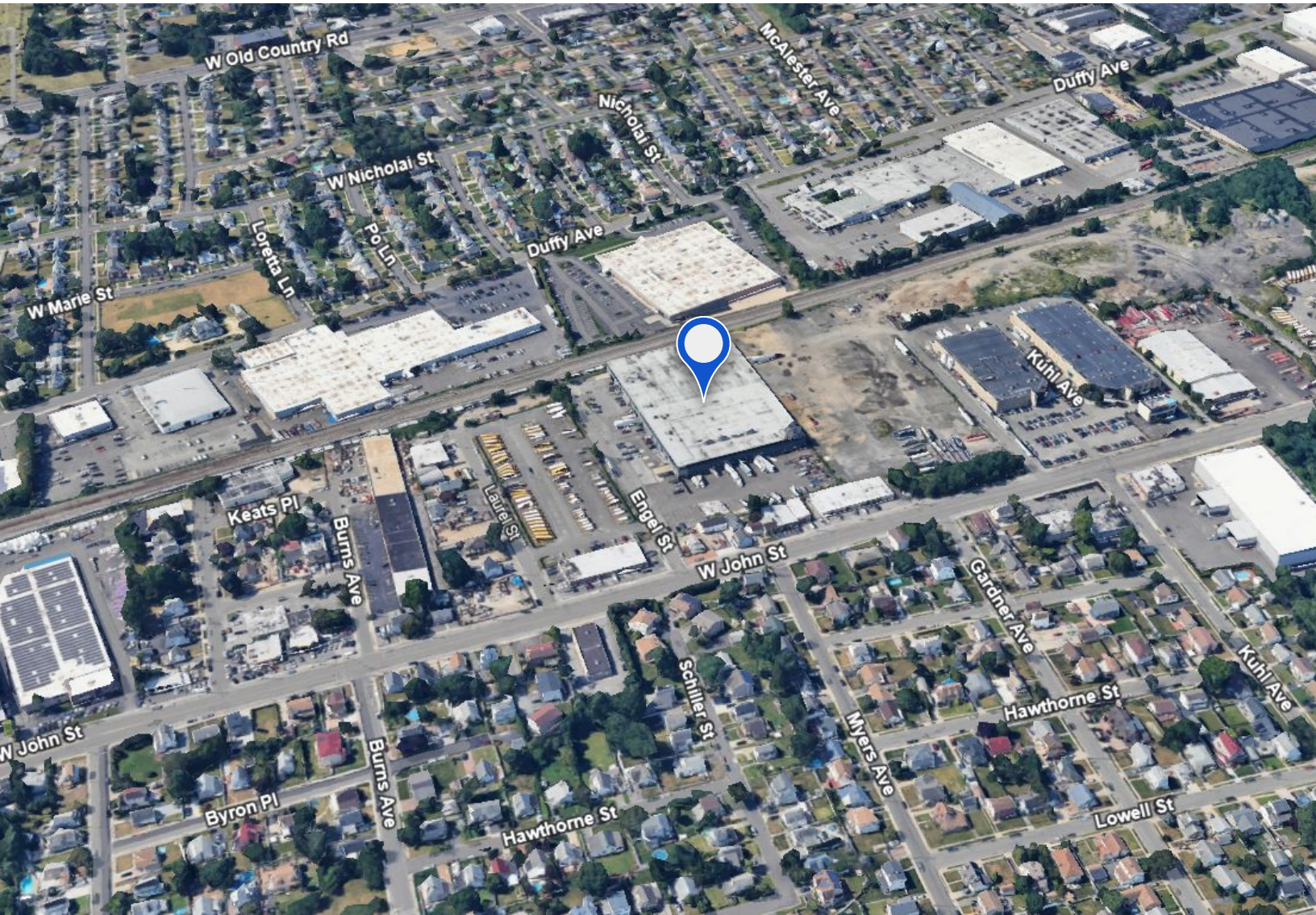
STEEL EQUITIES
999 S. OYSTER BAY ROAD
SUITE 200
BETHPAGE, NY 11714

Jason Miller
516.662.2210 Cell
516.465.0009 Office
jmiller@steelequities.com

Christian Mazzie
631.559.7838 Cell
516.465.0138 Office
cmazzie@steelequities.com

SECOND FLOOR





The information contained herein has either been provided by publicly available data or obtained from sources that we deem reliable. The information is subject to errors, omissions, modifications, and to any listing condition not otherwise provided. We have no reason to doubt the accuracy of the details herein but provide no guarantee to its reliability. All zoning, measurements, allowable uses and all other information herein must be independently verified.