

FOR LEASE

6085 Galster Road  
East Syracuse, New York 13057



Secure Industrial Yard



## 2,400± SF Warehouse on 5.33± Acres

### Property Highlights

- Zoned industrial
- Gated and fenced
- Over 950' frontage on I-481
- Includes 2,500± SF warehouse
- Two (2) 16' doors
- 18'-20' clear height
- Easy interstate access

### Drive Times / Distances to Interstates

I-90	8 Min / 4.7 Mi
I-690	3 Min / .09 Mi
I-81	8 Min / 5.5 Mi
I-481	4 Min / 1.7 Mi

Source: Google Maps



### Contact

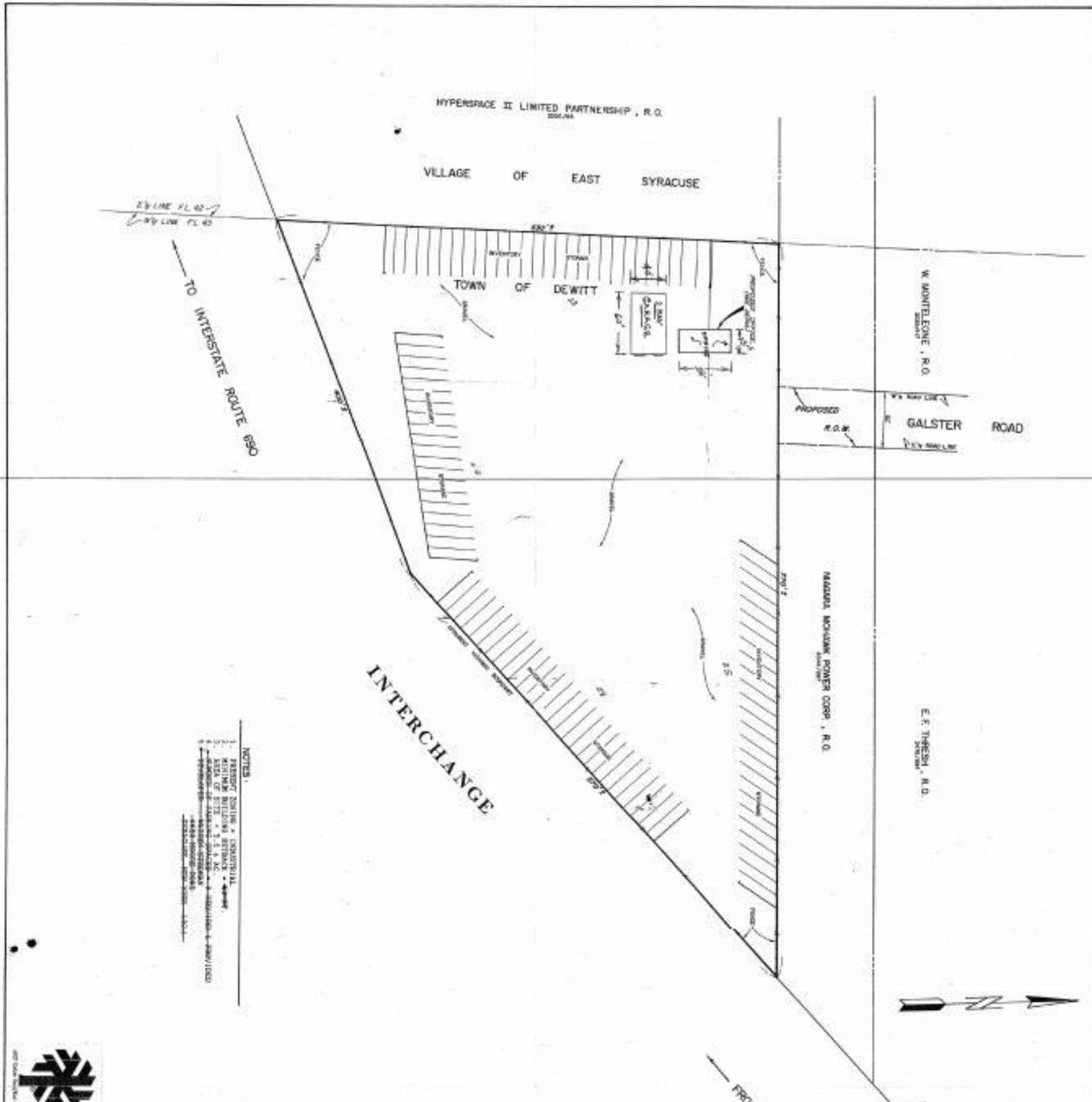
**STEPHEN SCUDERI**  
Real Estate Salesperson  
+1 315 445 8517  
sscuderi@pyramidbrokerage.com

**GARY G. COTTET**  
Associate Real Estate Broker  
+1 315 445 8529  
gcottet@pyramidbrokerage.com

5845 Widewaters Pkwy, Suite 200  
East Syracuse, New York 13057  
+1 315 445 1030  
pyramidbrokerage.com

FOR LEASE

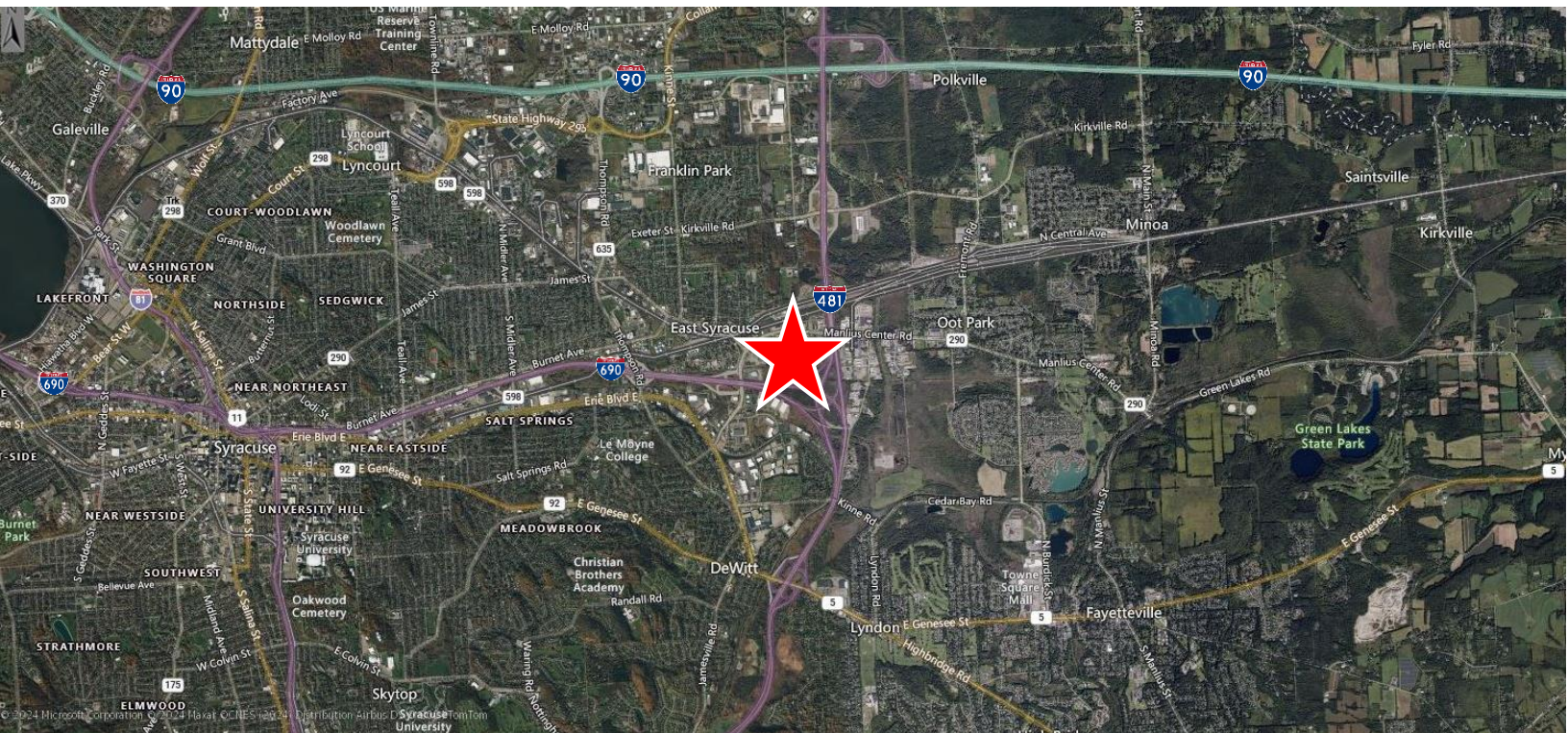
6085 Galster Road | East Syracuse, New York





FOR LEASE

6085 Galster Road | East Syracuse, New York



Independently Owned and Operated / A Member of the Cushman & Wakefield Alliance

Cushman & Wakefield Copyright 2022. No warranty or representation, express or implied, is made to the accuracy or completeness of the information contained herein, and same is submitted subject to errors, omissions, change of price, rental or other conditions, withdrawal without notice, and to any special listing conditions imposed by the property owner(s). As applicable, we make no representation as to the condition of the property (or properties) in question.