



**SterlingCRE**  
ADVISORS

## Historic Building, Modern Vibe – Downtown Missoula Office Space for Lease

424 North Higgins, 2nd Level  
Missoula, Montana  
±3,250 SF Office Suite

Exclusively listed by:

**Connor McMahon**

[Connor@SterlingCREadvisors.com](mailto:Connor@SterlingCREadvisors.com)

406.370.6424



# Opportunity Overview

Position your business in the heart of downtown Missoula with a workspace that blends vintage charm and practical function.

This warm, open second floor office features vintage wood floors, architectural beams, and abundant natural light. Two private offices, an open work area, and a distinctive lounge/work space with balconettes overlooking North Higgins create a flexible layout ideal for collaboration or quiet focus. Additional features include a break area with kitchen and private restrooms.

Just steps from Missoula's restaurants, coffee shops, and retail, this location offers convenience and character in equal measure. A perfect fit for small businesses in creative industries looking to make a statement with their space.

Contact SterlingCRE Advisors to learn more or schedule a tour.



<b>Address</b>	424 North Higgins
<b>Property Type</b>	Office
<b>Lease Rate</b>	\$24.00/SF NNN
<b>Estimated NNN</b>	\$7.50/SF Includes taxes and insurance; tenant to contract with maintenance vendors and utilities at tenants expense
<b>Total Square Feet</b>	±3,250 Square Feet

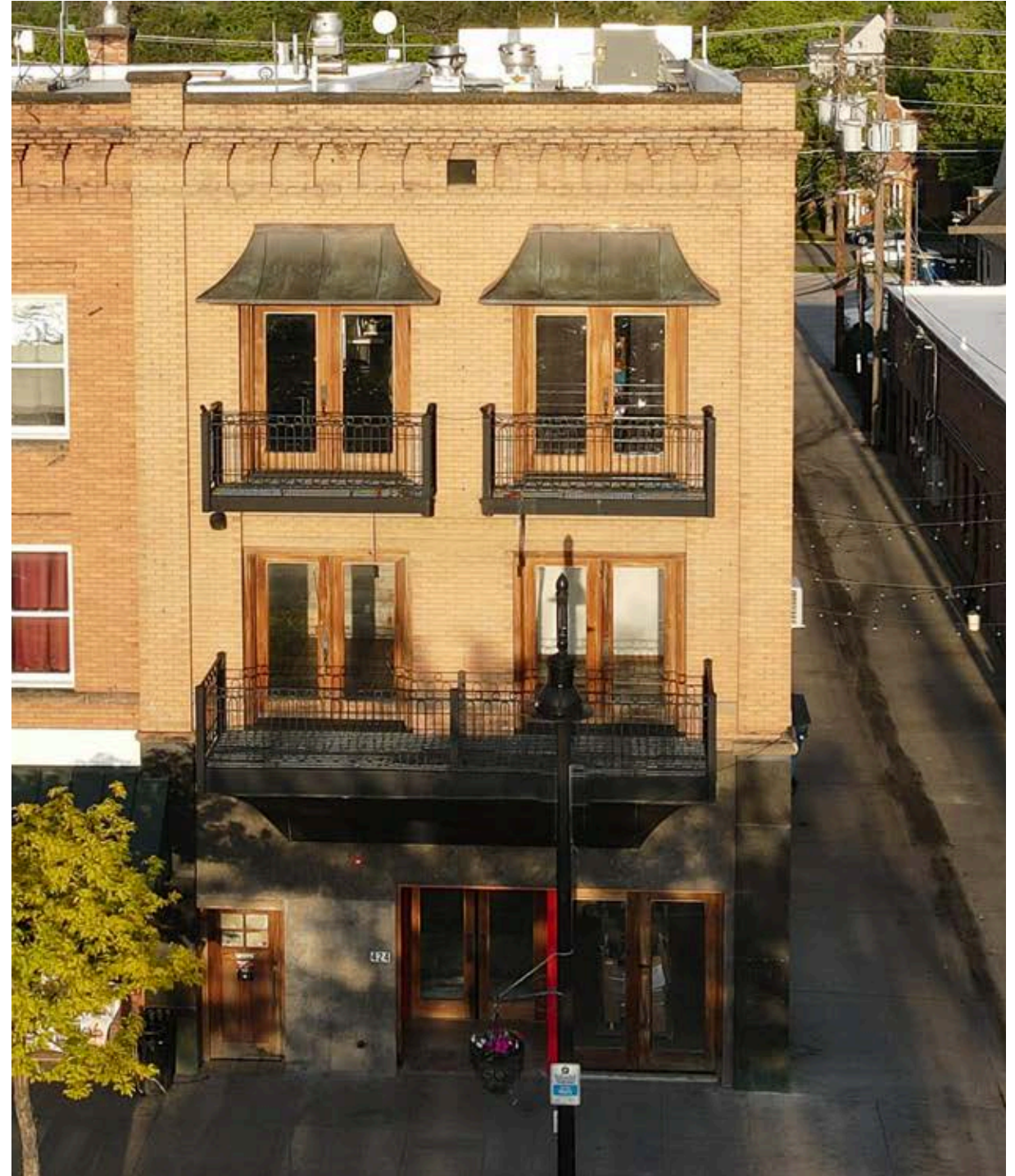
# Interactive Links

 [Link to Listing](#)

 [Street View](#)

 [3D Tour](#)

Note: If there are issues with video launch, you may need to update your PDF software or use the links above

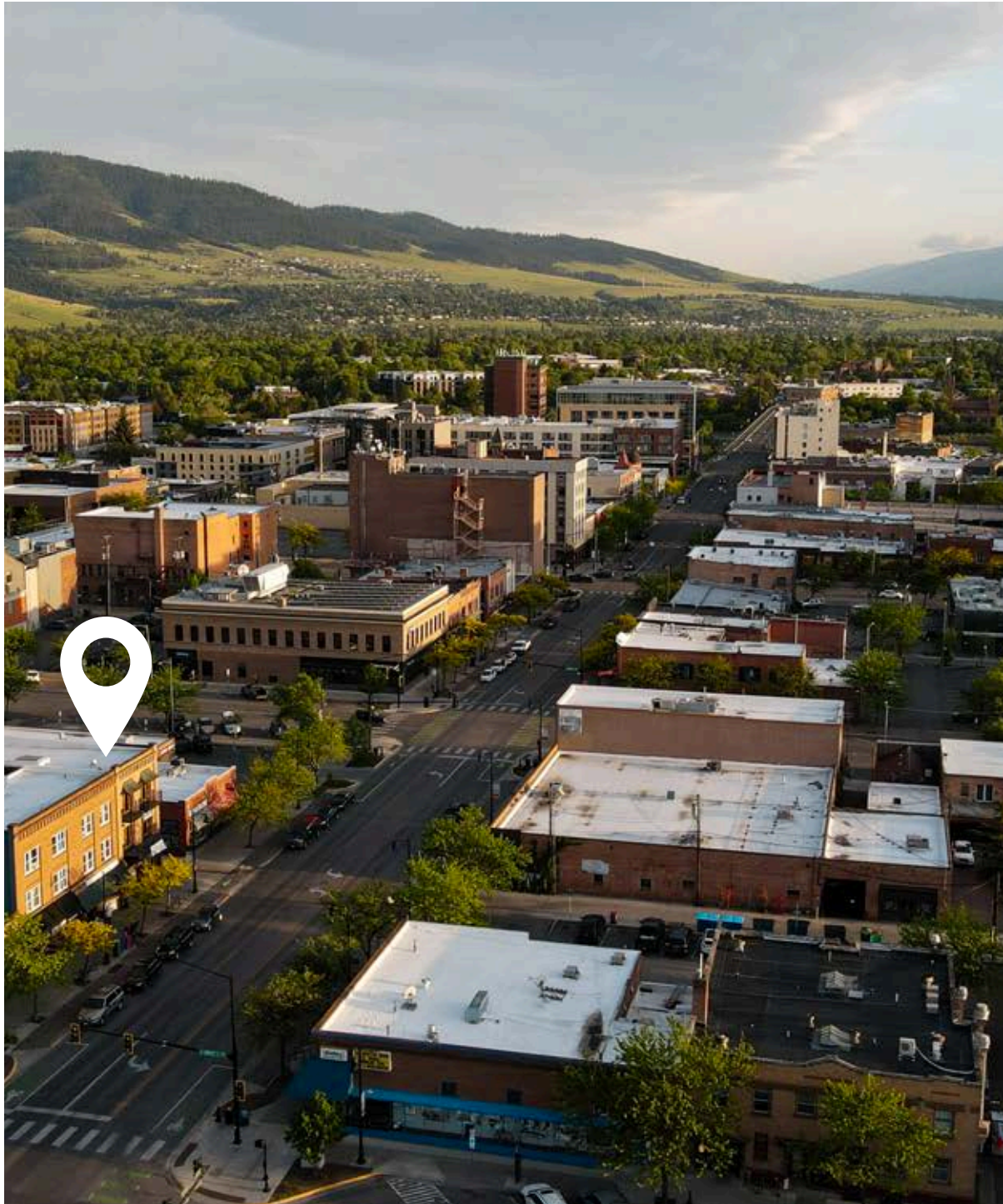


Interactive Links

# Property Details

<b>Address</b>	424 North Higgins Avenue Level 2 Missoula, Montana
<b>Property Type</b>	Office
<b>Square Feet</b>	±3,250 Square Feet
<b>Services</b>	City Water & Sewer
<b>Access</b>	North Higgins Avenue
<b>Zoning</b>	CBD-4
<b>Geocode</b>	04-2200-22-2-39-09-0000
<b>Private Office Count</b>	2
<b>Traffic Count</b>	4,710 AADT 2024 (Higgins)
<b>Year Built</b>	1900, recent renovations
<b>Parking</b>	On Street & Public Lots





**Centrally located in downtown Missoula, at the corner of North Higgins & Pine Street**



**Historic building that has features such as wood floors, exposed bricks, beams and iron Juliet balconies**



**Walk to a wide variety of restaurants and retail including favorites such as Worden's Deli**

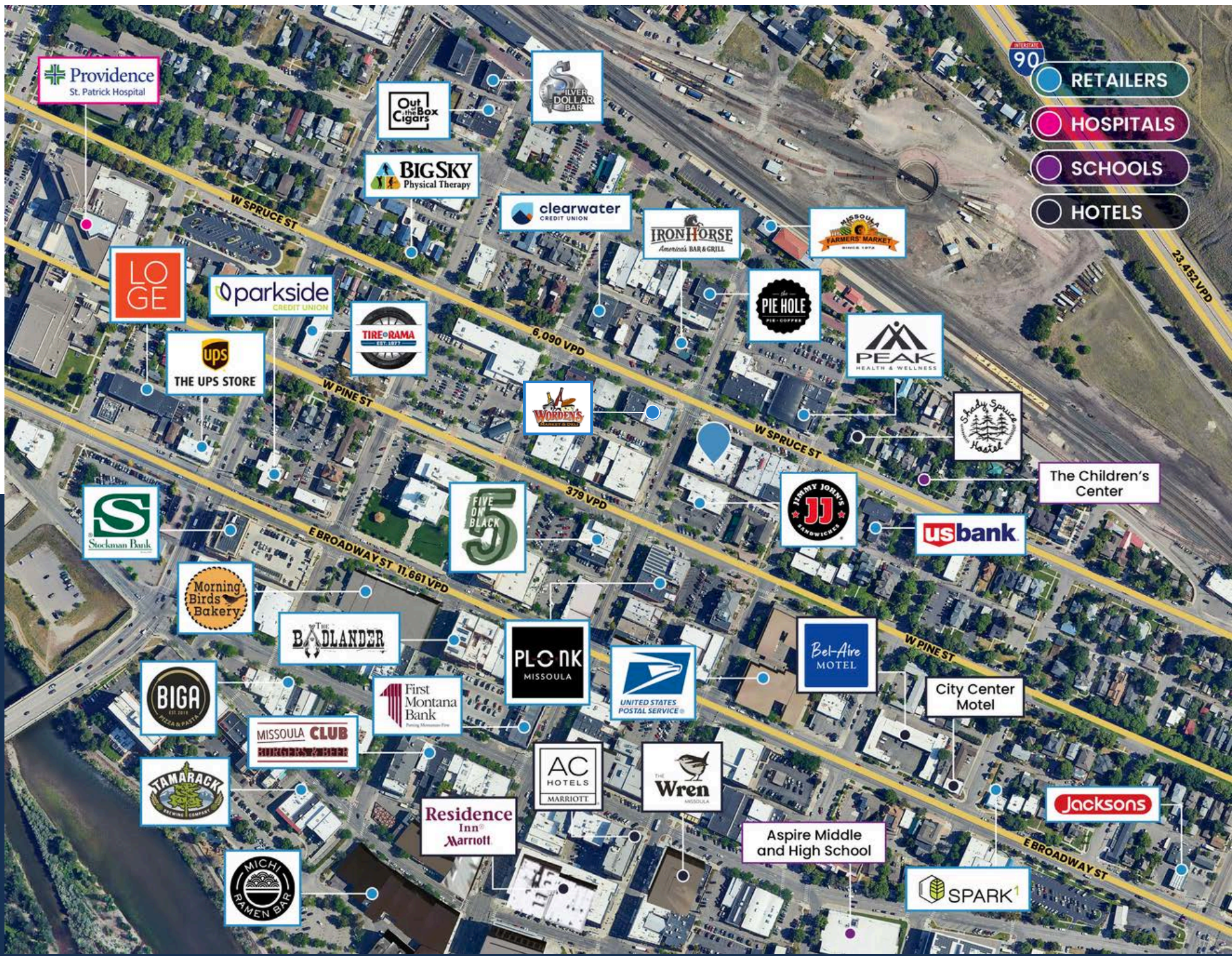


**Close to on-street parking and several public lots and parking decks**



**Space layout has a mix of private and open spaces and can accommodate a wide variety of business types**

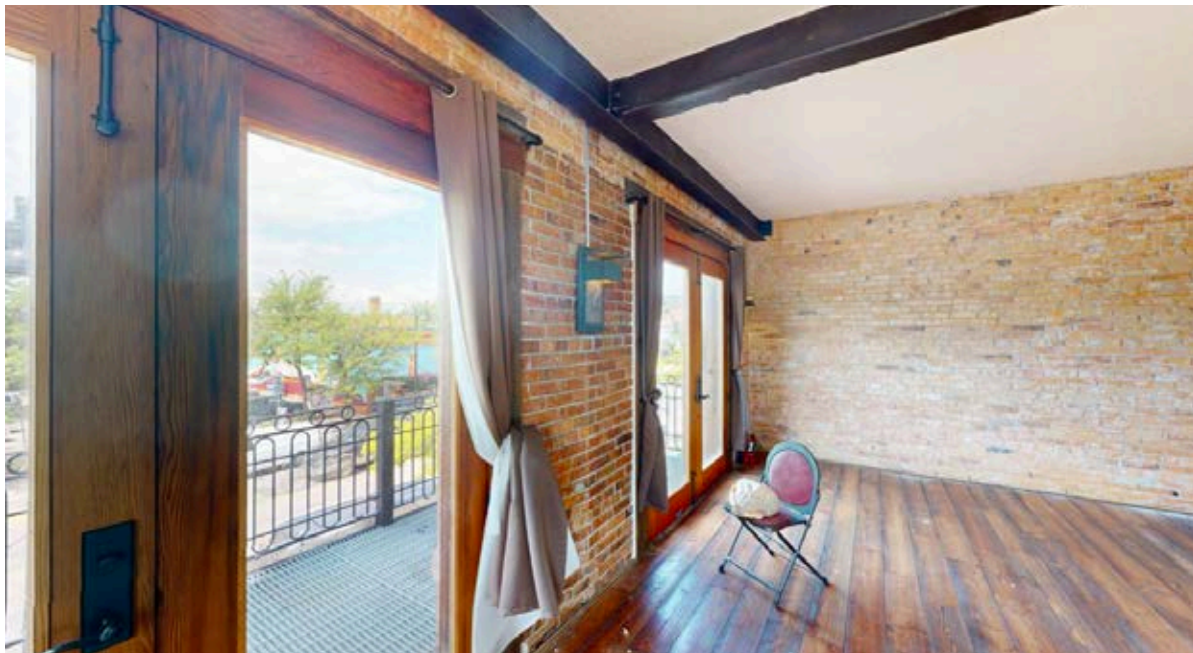
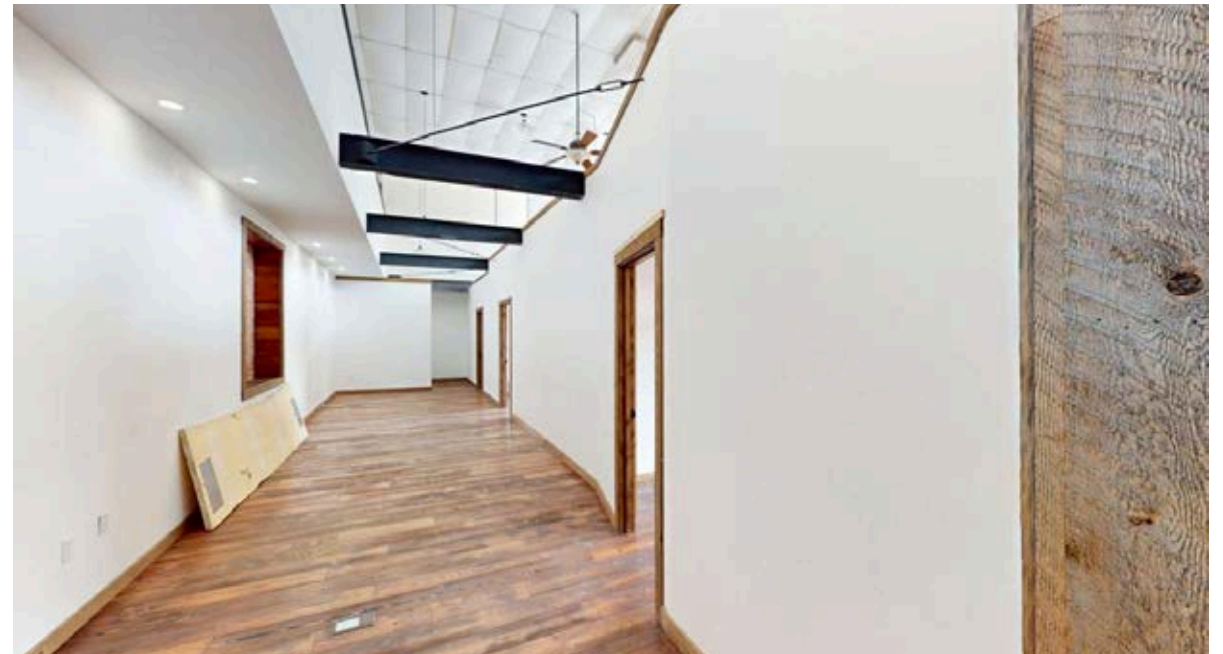




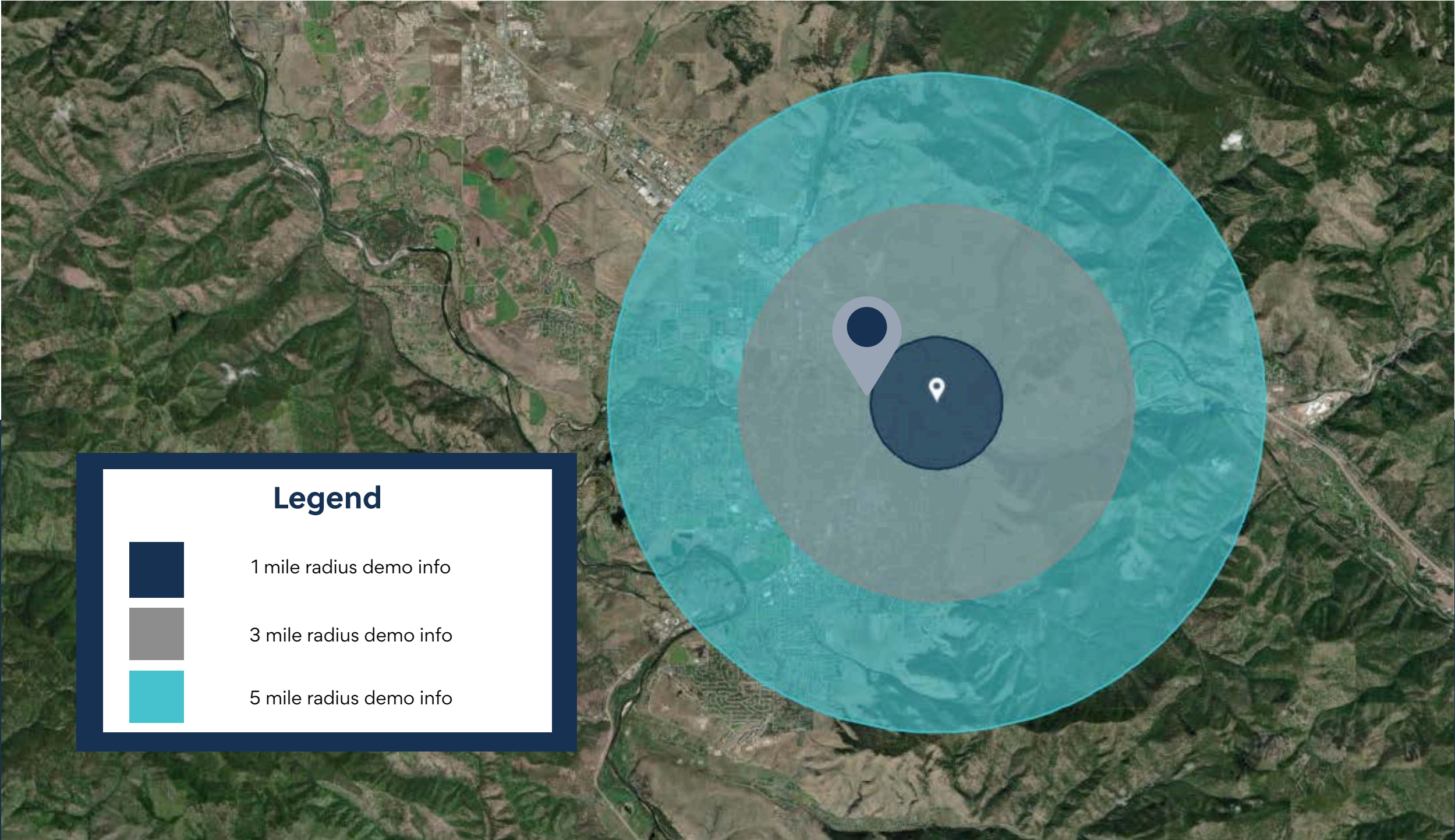
Retailer Map



Parking Map







**Legend**



1 mile radius demo info



3 mile radius demo info



5 mile radius demo info

# Key Facts

## KEY FACTS

1 mile

11,820

Population



Median Age



Average Household Size

\$49,536

Median Household Income

1,663

2023 Owner Occupied Housing Units (Esri)

3,937

2023 Renter Occupied Housing Units (Esri)

## BUSINESS

1 mile



1,491

Total Businesses



17,514

Total Employees

## HOUSING STATS

1 mile



\$509,892

Median Home Value



\$6,296

Average Spent on Mortgage & Basics



\$891

Median Contract Rent

### 2024 Households by income (Esri)

The largest group: \$75,000 - \$99,999 (18.2%)

The smallest group: \$150,000 - \$199,999 (4.4%)

1 mile

Indicator ▲	Value	Diff	
<\$15,000	13.9%	+6.7%	
\$15,000 - \$24,999	10.3%	+3.4%	
\$25,000 - \$34,999	10.0%	+3.4%	
\$35,000 - \$49,999	16.1%	+1.0%	
\$50,000 - \$74,999	14.4%	-1.1%	
\$75,000 - \$99,999	18.2%	+1.4%	
\$100,000 - \$149,999	7.9%	-8.2%	
\$150,000 - \$199,999	4.4%	-2.4%	
\$200,000+	4.7%	-4.3%	

Bars show deviation from

Variables	1 mile	3 miles	5 miles	Variables	1 mile	3 miles	5 miles
2022 Total Population	11,820	60,613	85,331	2022 Per Capita Income	\$34,796	\$38,687	\$40,681
2022 Household Population	10,517	58,025	82,413	2022 Median Household Income	\$49,536	\$56,375	\$63,985
2022 Family Population	4,867	34,299	53,612	2022 Average Household Income	\$72,272	\$82,512	\$90,492
2027 Total Population	12,088	61,903	88,666	2027 Per Capita Income	\$41,036	\$46,165	\$48,625
2027 Household Population	10,785	59,316	85,748	2027 Median Household Income	\$57,865	\$69,099	\$78,147
2027 Family Population	4,940	34,711	55,545	2027 Average Household Income	\$84,429	\$97,532	\$107,334

# Missoula Office Market Data | Q1 2025

## LEASING ACTIVITY | OFFICE

	T12 Ending 3.1.2024	T12 Ending 3.1.2025	Change	
County Average Lease Rate	\$17.80	\$18.88	6.07%	↑
Downtown Average Lease Rate	\$19.74	\$19.41	-1.67%	↓
NNN Average	\$6.30	\$7.05	11.90%	↑
County Vacancy	5.08%*	7.66%	2.58%	↑

\*Vacancy is for 2023

## SALES ACTIVITY | OFFICE

	T12 Ending 3.1.2024	T12 Ending 3.1.2025	Change	
County Average Sale Price PSF	\$230.66	\$272.70	18.23%	↑
Condominium Average Sale Price PSF	\$138.71	\$249.17	79.63%	↑
Freestanding Average Sale Price SF	\$242.26	\$282.50	16.61%	↑

All data covers the trailing 12 months  
Lease data is based on NNN or NNN Equivalent

## OFFICE DEVELOPMENT PIPELINE

Construction	±21,000 SF
Permitting	±6,101 SF
Planning	±44,000 SF
Completed 2024	±0 SF



# Missoula Air Service

Missoula International Airport offers **direct flights** to major cities on the west coast and midwest.

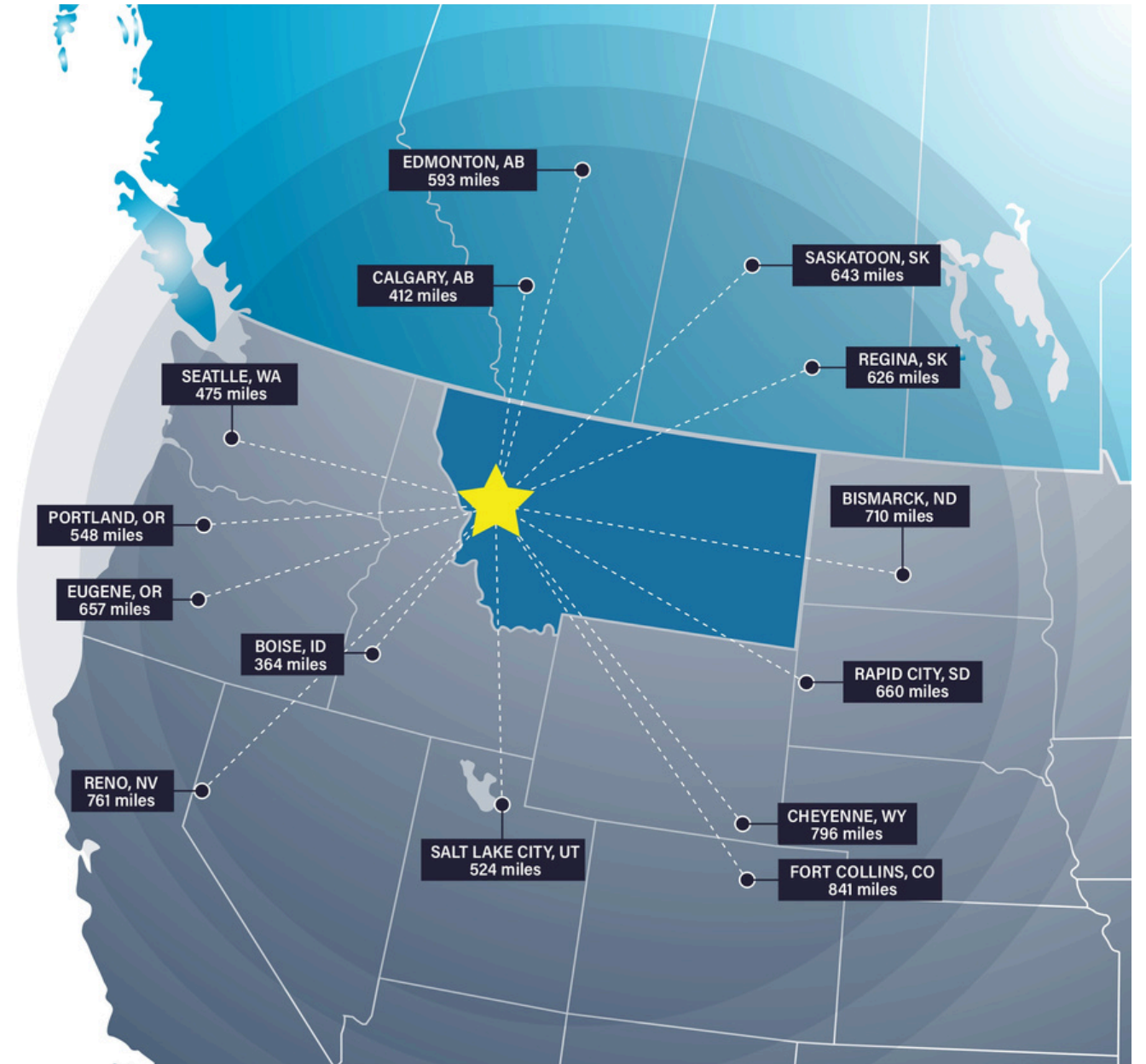


# Missoula Access

Missoula offers strategic proximity to major cities in the Pacific Northwest, Midwest, and Canada.

Missoula is within a day's truck drive of cities across the Northwest, including major Canadian metros. Easy access to Interstate 90 and US Highway 93 means Montana's major cities including Billings, Bozeman, Butte, Helena, Great Falls, Kalispell and Missoula are within a half day's drive.

Access to rail and the Missoula International Airport round out the city's access to a multimodal transportation network.



# Top Employers

## University of Montana

3,000+ employees

## Missoula County Public Schools

3,000+ employees

## St. Patrick Hospital

1000+ employees

## Montana Rail Link

1,000+r employees

## Community Medical Center

1000+ employees

## Missoula County

500+ employees

## City of Missoula

500+ employees

## Allegiance Benefits

500+ employees

# Noteworthy

Submittable 



workiva



Pathlabs



Cognizant

PatientOne



Source: Montana Department of Labor & Industry | [lmi.mt.gov](http://lmi.mt.gov) & Zippia | [zippia.com](http://zippia.com)



# ACCOLADES

## #2 Best Places to Live in the American West

Sunset Magazine

## Top 10 Medium Cities for the Arts

2023 Southern Methodist University

## University of Montana Top Tier R1 Designation

This designation, based on high research and innovation spending, held by only 3.7% of US Universities, attracts top-tier faculty and students

## #9 Best Performing US City

The Milken Institute- Smaller Metros under 275,000 Residents

## #4 Best Small Cities in America to Start a Business

Verizon Wireless

## #10 Best Small Metros to Launch a Business

CNN Money

## #6 Best Cities for Fishing

Rent.com

## #1 City for Yoga

Apartment Guide

## #1 Most Fun City for Young People

Smart Assets

# PEOPLE

## 12.5% Population Growth - 2012-2022

Missoula ranks among highest net migration cities in US

## Median Age 34 Years Old

The median age in the US is 39

## 58.8% Degreed

Associates degree or higher, 18.7% have a graduate level degree

## 24.7% High Income Households

Incomes over \$100,000 a year

## 53.4% Renters

## Top 5 Occupations

Office & Admin Support, Food Service, Sales, Transportation

# ACCESS

## **16 Minutes**

Average Commute Time

## **15.6% Multimodal Commuters**

Walk or bike to work

## **81 Hours Saved**

81 hours saved in commute yearly over national average

## **14 Non-Stop Air Destinations**

With a recently upgraded terminal at the Missoula International Airport

## **62 Miles**

Of bike lanes with a Gold rating from the League of American Bicyclists

## **12 Routes**

Provided by a bus network across the City of Missoula

## **11 EV Charge Stations**

Available to the public across Missoula

# ECONOMY

## **Designated as a Tech Hub**

Western Montana was one of 30 applicants out of 200 designated as a Tech Hub by the federal government and now eligible for millions of dollars in funding for research in smart, autonomous and remote sensing technologies.

## **Diversity Among Top Employers**

University of Montana (education), Providence Health Services/St. Patrick's Hospital (medical), Community Medical Center (medical), Montana Rail Link (transportation), Neptune Aviation (aviation services)

## **High Labor Participation**

Missoula consistently offers one of the highest labor force participation rates in the country.

## **Expanding Industries**

Missoula has seen major growth in construction, professional, scientific, and manufacturing businesses over the past decade.

## **Growing Number of Technology Companies**

Cognizant, onX, Submittable, and Lumenad are some leading tech firms in Missoula



# Brokerage Team



**CONNOR MCMAHON**  
Commercial Real Estate Advisor

Connor McMahon, from his days as a commercial fishing deck boss to earning accolades like Power Broker of the Year and CREXI Platinum Broker, always goes all in. Moving from property management to the retail side of commercial real estate, he's handled over \$135 million in transactions, proving his thorough grasp of this complex sector.



**JOE TREDIK**  
Leasing Specialist

Joe brings a personal understanding of the local market, its trends, and its unique opportunities to the Sterling Team. He leverages his accounting background and leasing experience to provide clients with detailed financial analysis and strategic insights that enable clients to make well informed leasing decisions.



**SIERRA PIERCE**  
Transaction Coordinator

Sierra has a sharp eye for detail with a background in client service and project coordination. With experience in marketing, small business ownership, and healthcare administration, Sierra has spent her career managing logistics, building strong relationships, and ensuring no task falls through the cracks.

# Disclaimer

CONFIDENTIALITY & DISCLAIMER All materials and information received or derived from SterlingCRE Advisors its directors, officers, agents, advisors, affiliates, and/or any third party sources are provided without representation or warranty as to completeness, veracity, or accuracy, condition of the property, compliance or lack of compliance with applicable governmental requirements, developability or suitability, the financial performance of the property, the projected financial performance of the property for any party's intended use or any and all other matters. Neither SterlingCRE Advisors its directors, officers, agents, advisors, or affiliates makes any representation or warranty, express or implied, as to accuracy or completeness of any materials or information provided, derived, or received. Materials and information from any source, whether written or verbal, that may be furnished for review are not a substitute for a party's active conduct of its own due diligence to determine these and other matters of significance to such party. SterlingCRE Advisors will not investigate or verify any such matters or conduct due diligence for a party unless otherwise agreed in writing. EACH PARTY SHALL CONDUCT ITS OWN INDEPENDENT INVESTIGATION AND DUE DILIGENCE. Any party contemplating or under contract or in escrow for a transaction is urged to verify all information and to conduct their own inspections and investigations including through appropriate third-party independent professionals selected by such party. All financial data should be verified by the party including by obtaining and reading applicable documents and reports and consulting appropriate independent professionals. SterlingCRE Advisors makes no warranties and/or representations regarding the veracity, completeness, or relevance of any financial data or assumptions. SterlingCRE Advisors does not serve as a financial advisor to any party regarding any proposed transaction. All data and assumptions regarding financial performance, including that used for financial modeling purposes, may differ from actual data or performance. Any estimates of market rents and/or projected rents that may be provided to a party do not necessarily mean that rents can be established at or increased to that level. Parties must evaluate any applicable contractual and governmental limitations as well as market conditions, vacancy factors, and other issues in order to determine rents from or for the property. Legal questions should be discussed by the party with an attorney. Tax questions should be discussed by the party with a certified public accountant or tax attorney. Title questions should be discussed by the party with a title officer or attorney. Questions regarding the condition of the property and whether the property complies with applicable governmental requirements should be discussed by the party with appropriate engineers, architects, contractors, other consultants, and governmental agencies. All properties and services are marketed by SterlingCRE Advisors in compliance with all applicable fair housing and equal opportunity laws.