



## **RIVERPLACE SOUTH** JACKSONVILLE, FLORIDA

1300 Riverplace Boulevard

### **In the heart of the Southbank District**

Located on the south side of the St. Johns River, Riverplace South boasts gorgeous views overlooking river and is surrounded by high-rise office, residential, retail, and hotels.

Mark Montgomery, CCIM  
Senior Vice President  
904 512 0545  
[mark.montgomery@avisonyoung.com](mailto:mark.montgomery@avisonyoung.com)

# RIVERPLACE SOUTH

## JACKSONVILLE, FLORIDA

1300 Riverplace Boulevard



### RIVERPLACE SOUTH HIGHLIGHTS

- Aggressive rental rates
- Eight-story building totaling 112,488 sf
- Renovated common areas, new elevators
- 3.5/1,000 parking ratio
- Courtesy patrol, closed circuit monitoring, and card access for after hours and surface lot entrance

### LOCATION HIGHLIGHTS

- Located in the heart of Jacksonville's CBD in the Southbank District on the St. Johns River
- Adjacent to the Skyway's Riverplace Transit Stop
- Steps away from dining, retail, hotels, parks, and arts & culture
- Located off I-95 and within minutes to I-10 and I-295
- 15 miles from Jacksonville International Airport



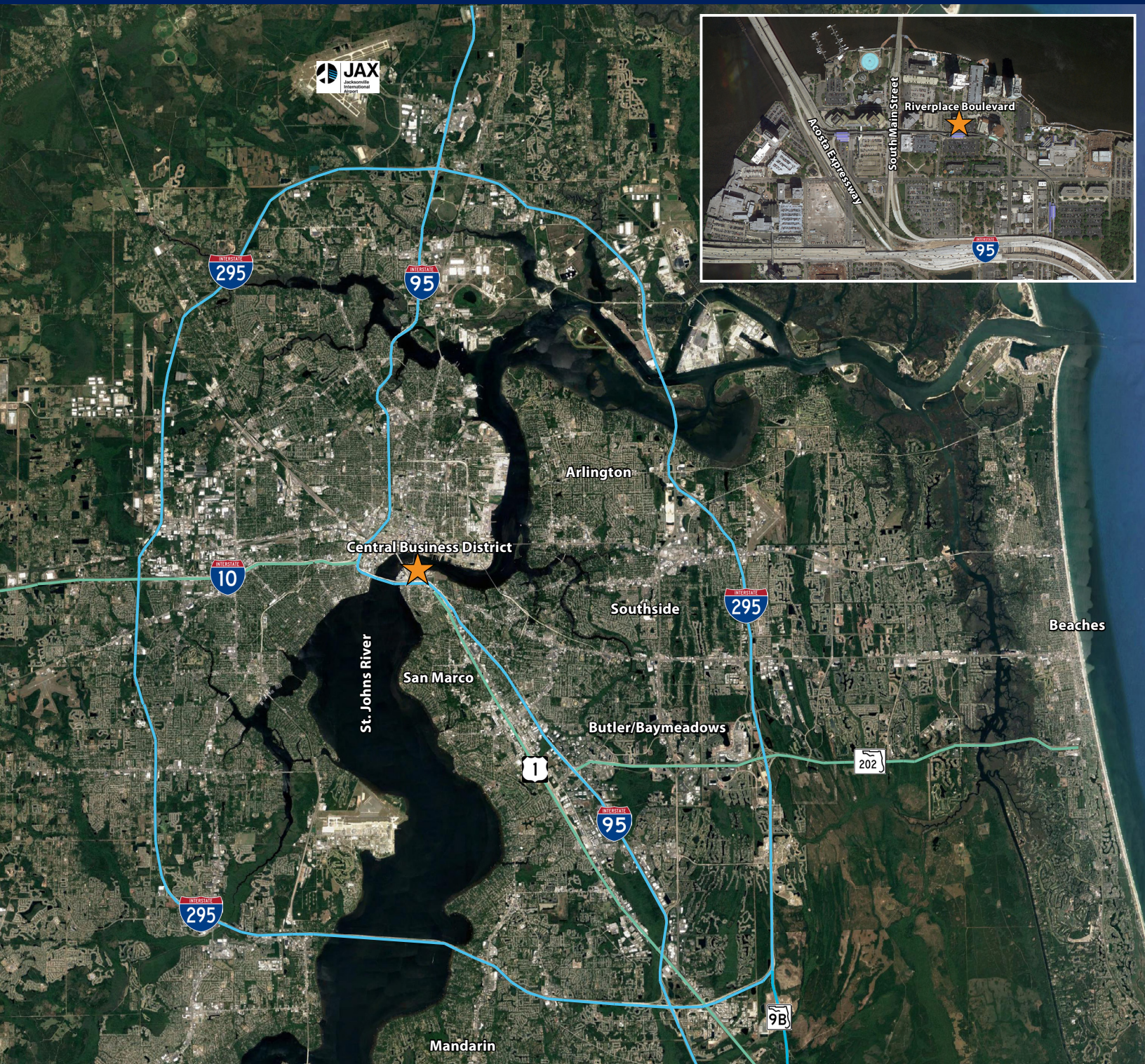
Mark Montgomery, CCIM  
Senior Vice President  
904 512 0545  
[mark.montgomery@avisonyoung.com](mailto:mark.montgomery@avisonyoung.com)

THE INFORMATION CONTAINED HEREIN WAS OBTAINED FROM SOURCES BELIEVED RELIABLE; HOWEVER, AVISON YOUNG MAKES NO GUARANTEES, WARRANTIES OR REPRESENTATIONS AS TO THE COMPLETENESS OR ACCURACY THEREOF. THE PRESENTATION OF THIS PROPERTY IS SUBMITTED SUBJECT TO ERRORS, OMISSIONS, CHANGE OF PRICE, OR CONDITIONS, PRIOR TO SALE OR LEASE, OR WITHDRAWAL WITHOUT NOTICE.

# RIVERPLACE SOUTH

## JACKSONVILLE, FLORIDA

1300 Riverplace Boulevard



Mark Montgomery, CCIM  
Senior Vice President  
904 512 0545  
[mark.montgomery@avisonyoung.com](mailto:mark.montgomery@avisonyoung.com)

THE INFORMATION CONTAINED HEREIN WAS OBTAINED FROM SOURCES BELIEVED RELIABLE; HOWEVER, AVISON YOUNG MAKES NO GUARANTEES, WARRANTIES OR REPRESENTATIONS AS TO THE COMPLETENESS OR ACCURACY THEREOF. THE PRESENTATION OF THIS PROPERTY IS SUBMITTED SUBJECT TO ERRORS, OMISSIONS, CHANGE OF PRICE, OR CONDITIONS, PRIOR TO SALE OR LEASE, OR WITHDRAWAL WITHOUT NOTICE.