

## Vacant Space Assessment

Photo Documentation | Restroom Accessibility  
(LOD Supplement)



### Sweet Siam

4130

4130 Pennsylvania Ave | Kansas City, MO

*Prepared For:*

**RH Johnson**

4520 Madison Ave, Suite 300

Kansas City, MO | 64111

816.268.2420

July 19, 2017

**PHOTO DOCUMENTATION**



PHOTO 01

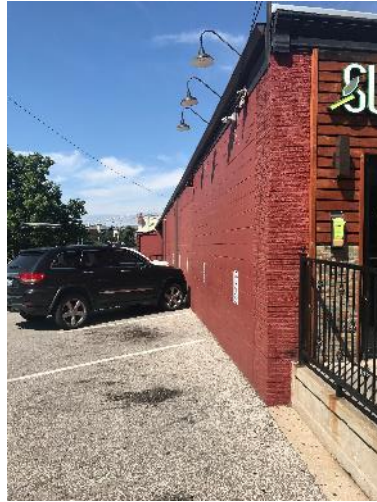


PHOTO 02



PHOTO 03



PHOTO 04



PHOTO 05



PHOTO 06



PHOTO 07



PHOTO 08



PHOTO 09

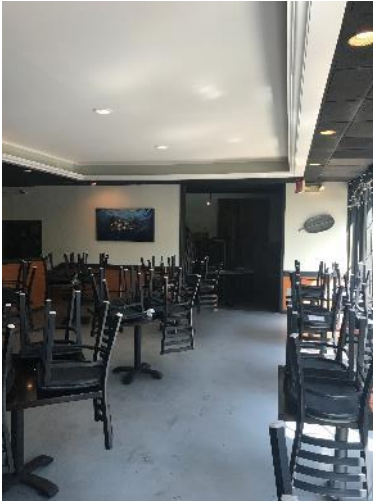


PHOTO 10



PHOTO 11



PHOTO 12



PHOTO 13



PHOTO 14



PHOTO 15



PHOTO 16



PHOTO 17



PHOTO 18



PHOTO 19



PHOTO 20



PHOTO 21



PHOTO 22

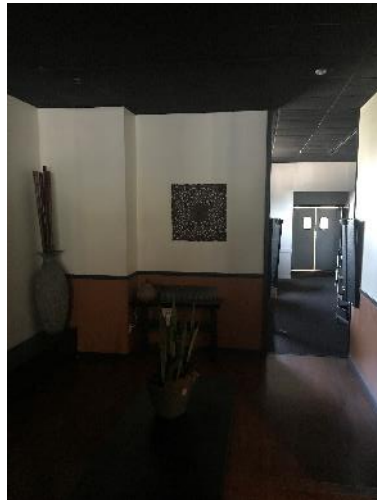


PHOTO 23



PHOTO 24



PHOTO 25



PHOTO 26



PHOTO 27



PHOTO 28

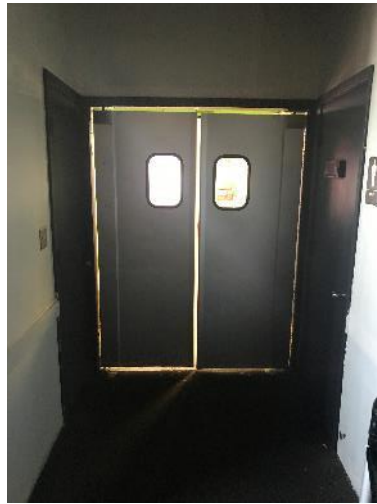


PHOTO 29



PHOTO 30



PHOTO 31



PHOTO 32



PHOTO 33



PHOTO 34



PHOTO 35



PHOTO 36



PHOTO 37



PHOTO 38



PHOTO 39



PHOTO 40



PHOTO 41



PHOTO 42



PHOTO 43



PHOTO 44



PHOTO 45

**US Building Survey, LLC**  
15954 Mur-Len, Suite 122 | Olathe, Kansas 66062



PHOTO 46



PHOTO 47



PHOTO 48



PHOTO 49



PHOTO 50



PHOTO 51



PHOTO 52



PHOTO 53



PHOTO 54

**US Building Survey, LLC**  
15954 Mur-Len, Suite 122 | Olathe, Kansas 66062



PHOTO 55



PHOTO 56



PHOTO 57



PHOTO 58

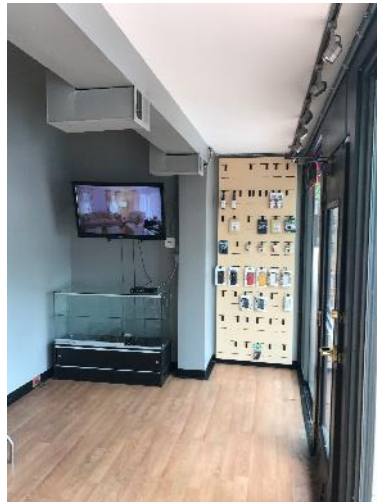


PHOTO 59



PHOTO 60



PHOTO 61



PHOTO 62



PHOTO 63



**US Building Survey, LLC**  
15954 Mur-Len, Suite 122 | Olathe, Kansas 66062



PHOTO 64



PHOTO 65



PHOTO 66



PHOTO 67



PHOTO 68



PHOTO 69



PHOTO 70



PHOTO 71



PHOTO 72



PHOTO 73



PHOTO 74



PHOTO 75



PHOTO 76

**ADA COMPLIANCE REPORT – RESTROOM ACCESSIBILITY ASSESSMENT**

		RESTRM (011)	RESTRM (012)	RESTRM (014)	RESTRM (015)
<b>SIGNAGE</b>					
	Sign with ADA symbol	YES	YES	NO	NO
	Raised Characters	YES	YES	NO	YES
	Braille	YES	YES	NO	YES
	Located at latch side of door	YES	YES	NO	YES
	Mounting height: 48"-60"	YES	YES	NO	YES
<b>ENTRANCE</b>					
	Door opening width 32" min when open 90 degrees	YES	YES	NO	NO
	18" on pull side of door plus 30" clear	YES	YES	YES	YES
	Accessible handles (operable by closed fist)	YES	YES	NO	NO
	Handle height 34"-48"	YES	YES	YES	YES
	Threshold ¼"H max or ¼" + ¼" beveled	YES	YES	NO	YES
<b>INTERIOR</b>					
	Clear floor space 60" diameter circle	NO	NO	NO	NO
	Toilet centerline from wall 16"-18"	NO	YES	NO	NO
	Toilet clear floor space 60" from side wall and 56" from rear wall	YES	YES	NO	NO
	Height of toilet seat 17"-19"	YES	YES	NO	NO
	Height of flush control 15"-48"	YES	YES	YES	YES
	Flush control located on open side of toilet	YES	YES	NO	NO
	Side wall grab bar 42" L 12" max from wall	YES	YES	n/a	n/a
	Side wall grab bar 33"-36" H to top	YES	YES	n/a	n/a
	Rear wall grab bar 36"L / 12" and 24" center of toilet	YES	YES	n/a	n/a
	Rear wall grab bar 33"-36" H to top	YES	YES	n/a	n/a
	TP dispenser 7"-9" from front of toilet to centerline	NO	n/a	n/a	n/a
	TP dispenser height 15"-48"	YES	n/a	n/a	n/a
	TP dispenser not located behind grab bar	YES	n/a	n/a	n/a
	Sink clear floor space 30"W x 48"D	YES	YES	NO	NO
	Height of sink rim 34" max	YES	YES	YES	YES
	Knee clearance 27"H min x 8"D min	YES	YES	YES	YES
	Pipe protection below sink	NO	NO	YES	YES
	Faucet handles operable by closed fist	YES	YES	YES	NO
	Bottom of mirror 40"H max (if above sink)	YES	YES	NO	n/a
	Bottom of mirror 35"H max (if not above sink)	n/a	n/a	n/a	n/a
	Soap dispenser 44"H max (if above sink)	n/a	n/a	n/a	n/a
	Soap dispenser 48"H max (if not above sink)	n/a	n/a	n/a	n/a
	Paper towel dispenser 44"H max (if above sink)	n/a	n/a	NO	n/a
	Paper towel dispenser 48"H max (if not above sink)	NO	NO	n/a	NO
	Electric hand dryer 44"H max (if above sink)	n/a	n/a	n/a	n/a
	Electric hand dryer 48"H max (if not above sink)	n/a	n/a	n/a	n/a
<b>STALLS (Toilet Compartments)</b>					
	Door opening width 32" min when open 90 degrees	n/a	n/a	n/a	n/a
	18" on pull side of door	n/a	n/a	n/a	n/a
	Is stall door self-closing	n/a	n/a	n/a	n/a
	Door lock operable by closed fist	n/a	n/a	n/a	n/a
	Height of door lock 34"-48"	n/a	n/a	n/a	n/a
	Stall width 60" min	n/a	n/a	n/a	n/a
	Stall depth 56" min (wall hung toilet)	n/a	n/a	n/a	n/a
	Stall depth 59" min (floor mounted toilet)	n/a	n/a	n/a	n/a
	Height of flush control 15"-48"	n/a	n/a	n/a	n/a

\* Please refer to Architectural Sheets for specific/detailed and dimensional information.