

SPACE AVAILABLE FOR LEASE

6403 NE 117th Ave #108, Vancouver, WA 98662



**PRICE
REDUCED**



[VISIT MAJCRE.COM](http://VISITMAJCRE.COM)



1,330 SqFt | \$21.00 / SqFt

This spacious office is perfect for a wide range of office users, healthcare providers, therapists and specialists.

The office has been designed with the needs and comfort of patients/clients and staff in mind providing multiple treatment rooms, reception area, waiting room, private office, and restroom.

Located conveniently off Fourth Plain Blvd and 117th AVE (SR 503), a busy commercial area with plenty of foot and car traffic. Your patients will have no trouble finding you, and you will be able to attract new clients from the surrounding area.

Don't miss this rare opportunity to establish or expand your business in a prime location that will help you grow your company and serve your clients better.

Contact us today to schedule a tour and discover all the benefits of this exceptional space!

Katie Panarra

360.823.5101

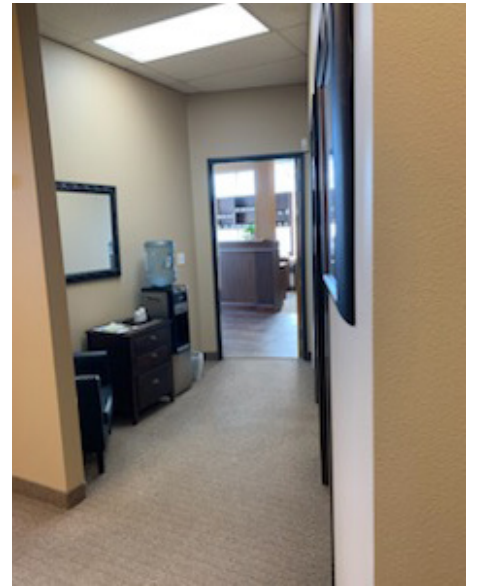
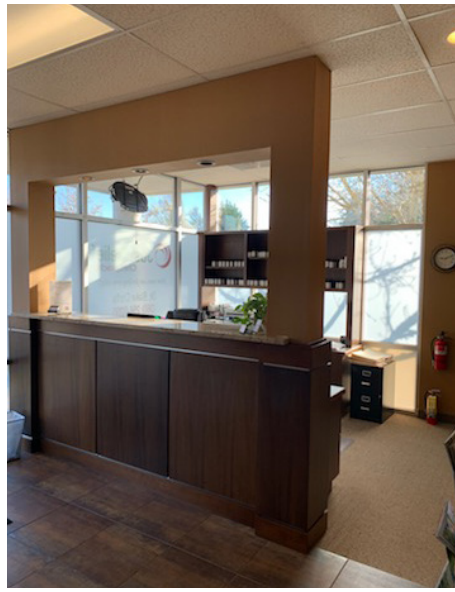
Katie@MAJCRE.com

MAJ COMMERCIAL REAL ESTATE

300 W 15th Street, Ste 200, Vancouver WA

Office: 360.699.4494 | www.MAJCRE.com

While the information provided is not guaranteed, it has been obtained from sources we deem reliable.



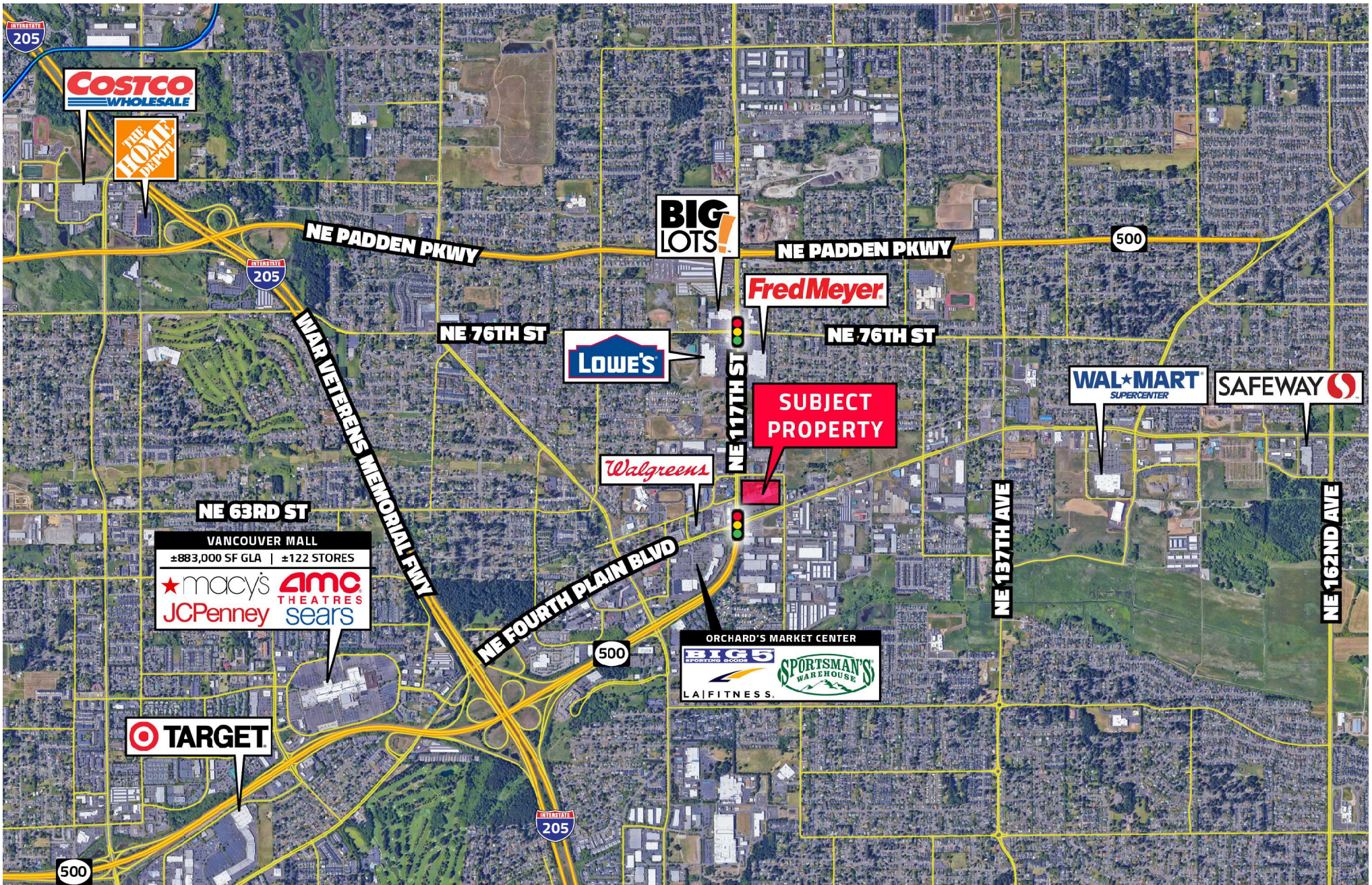
While the information provided is not guaranteed, it has been obtained from sources we deem reliable.





While the information provided is not guaranteed, it has been obtained from sources we deem reliable.





While the information provided is not guaranteed, it has been obtained from sources we deem reliable.

