

# AMBULATORY SURGERY CENTER ASC FOR LEASE

# Northwest Medical Center

1900 116th Ave NE | Bellevue, WA



## ASC FOR LEASE

Suite 100 | 4,625 RSF  
\$52.00/SF, Gross  
2 days per week

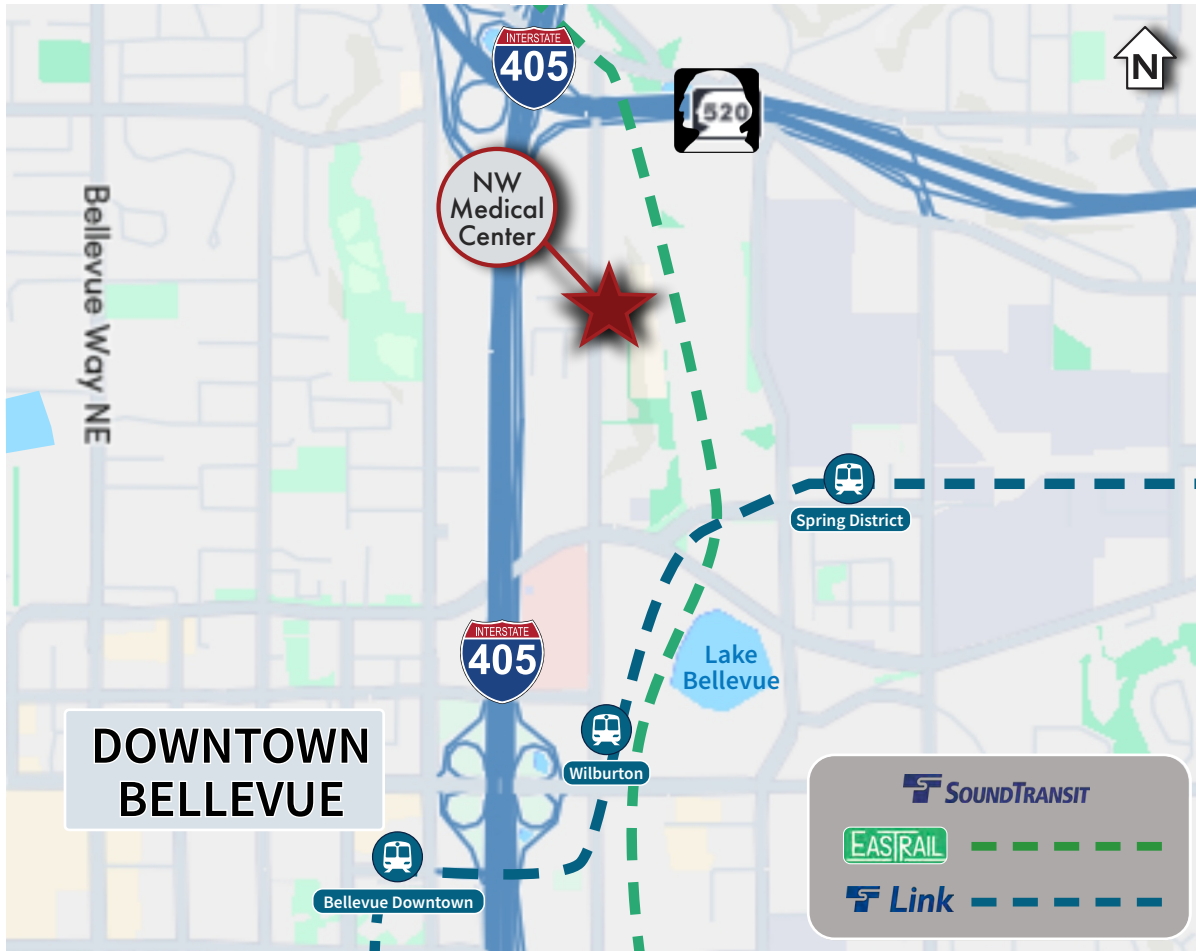


Dan Krekel 

Senior Vice President • Leibsohn & Company  
(425) 586-4655 | [dkrekel@leibsohn.com](mailto:dkrekel@leibsohn.com)

# Northwest Medical Center

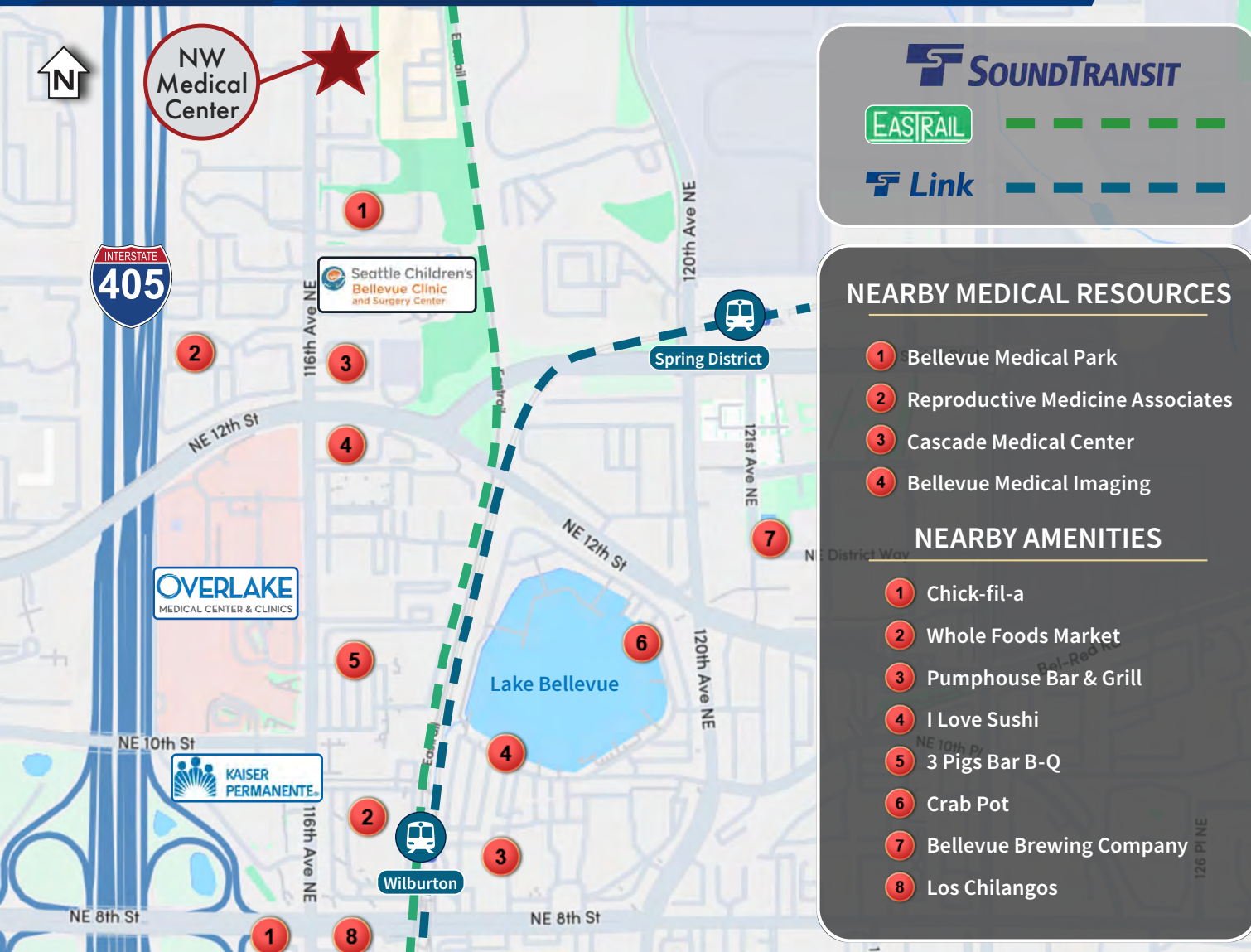
SUITE	SIZE	\$/MONTH	SPACE USE
100	4,625 RSF	\$20,315.00, Gross	2 days/week



## PROPERTY HIGHLIGHTS

- Centrally located in Bellevue Healthcare District
- Adjacent to Overlake Medical, Kaiser Permanente, and Bellevue Medical Center
- Easy access to I-405 & SR-520
- Situated 0.5 miles from East Link Spring District light rail station
- Comcast & ziplify fiber available
- Ambulatory Surgery Center with two (2) operating rooms

# Northwest Medical Center



**SOUNDTRANSIT**

**EASRAIL** ———

**Link** - - - - -

- ### NEARBY MEDICAL RESOURCES
- 1 Bellevue Medical Park
  - 2 Reproductive Medicine Associates
  - 3 Cascade Medical Center
  - 4 Bellevue Medical Imaging
- ### NEARBY AMENITIES
- 1 Chick-fil-a
  - 2 Whole Foods Market
  - 3 Pumphouse Bar & Grill
  - 4 I Love Sushi
  - 5 3 Pigs Bar B-Q
  - 6 Crab Pot
  - 7 Bellevue Brewing Company
  - 8 Los Chilangos



ASC FOR LEASE

# Northwest Medical Center



Dan Krekel 

Senior Vice President • Leibsohn & Company  
(425) 586-4655 | [dkrekel@leibsohn.com](mailto:dkrekel@leibsohn.com)

# Northwest Medical Center

## ASC FOR LEASE



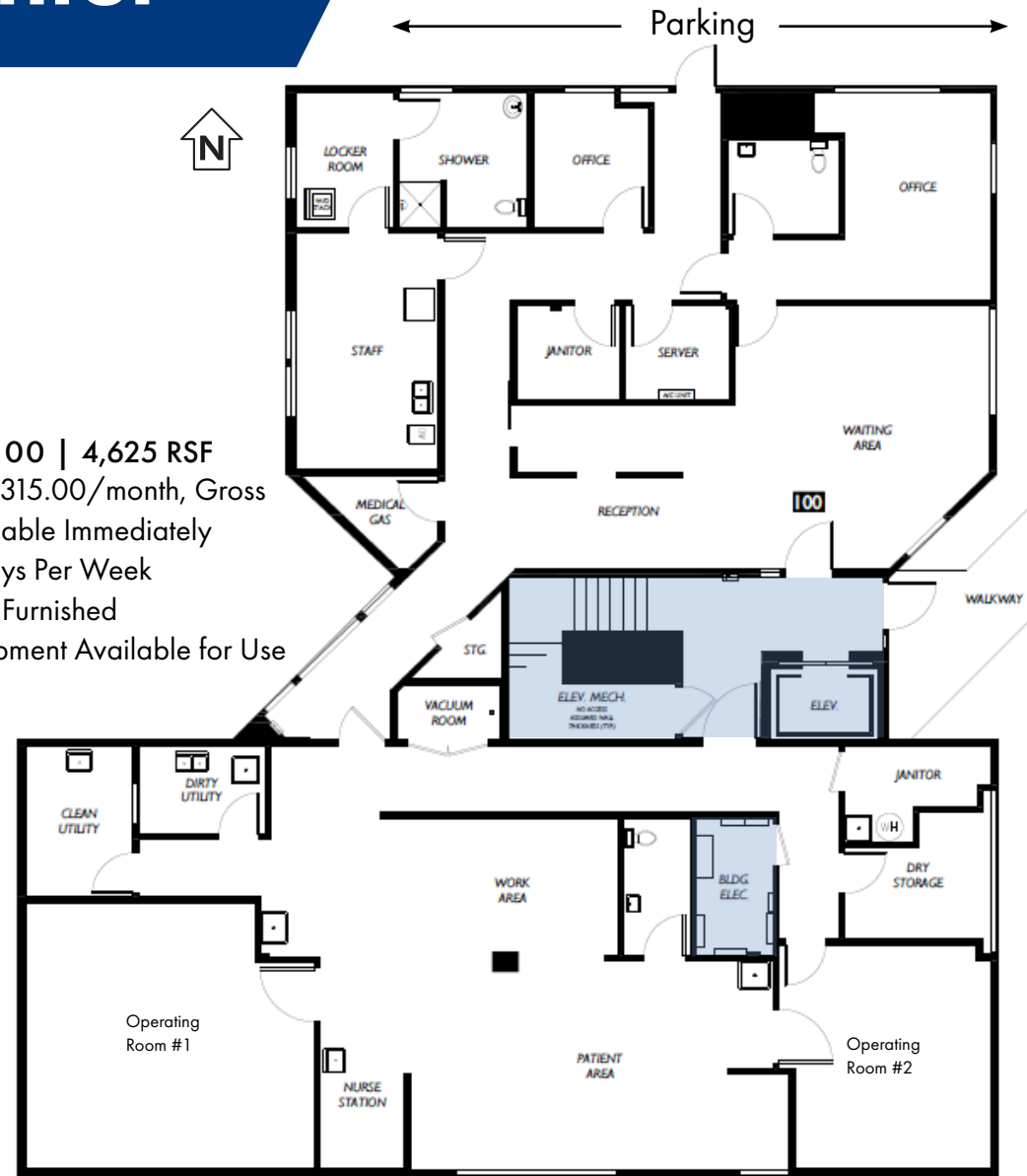
# ASC FOR LEASE

# Northwest Medical Center



## SUITE 100 | 4,625 RSF

- \$20,315.00/month, Gross
- Available Immediately
- 2 Days Per Week
- Fully Furnished
- Equipment Available for Use



# NORTHWEST MEDICAL CENTER

1900 116th Ave NE | Bellevue, WA

Dan Krekel 

Senior Vice President • *Leibsohn & Company*  
(425) 586-4655 | [dkrekel@leibsohn.com](mailto:dkrekel@leibsohn.com)

THE INFORMATION CONTAINED HEREIN HAS BEEN RECEIVED FROM  
SOURCES WE DEEM RELIABLE. WHILE WE HAVE NO REASON TO DOUBT  
ITS ACCURACY, WE DO NOT GUARANTEE IT. YOU ARE ADVISED TO  
INDEPENDENTLY VERIFY ALL INFORMATION.  
COPYRIGHT Leibsohn & Company

 **Leibsohn & Company**  
Commercial Real Estate Services