



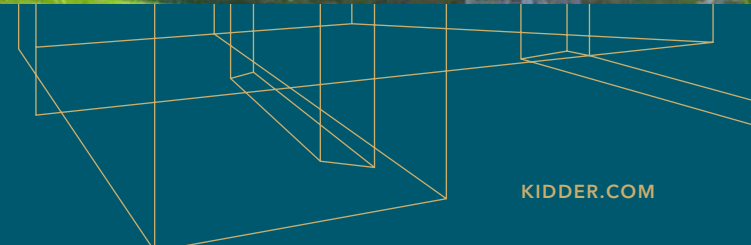
±14,999 SF OFFICE FOR SUBLEASE

5901 PRIESTLY DRIVE, SUITE 200 | CARLSBAD, CA 92008



**Kidder
Mathews**

TYLER HANSON
858.922.4686
tyler.hanson@kidder.com
LIC N° 01953551



KIDDER.COM

FOR SUBLEASE

±14,999 SF Office

5901 PRIESTLY DRIVE, SUITE 200 | CARLSBAD, CA 92008



±14,999 RSF

AVAILABLE in 30 days

TERM EXPIRES 10/31/26

FF&E Available

RATE Negotiable

ABUNDANT Natural Light

DOUBLE-DOOR Entry

OUTDOOR Patio & Gym
Amenities

TYLER HANSON

858.922.4686

tyler.hanson@kidder.com

LIC N° 01953551

KIDDER.COM

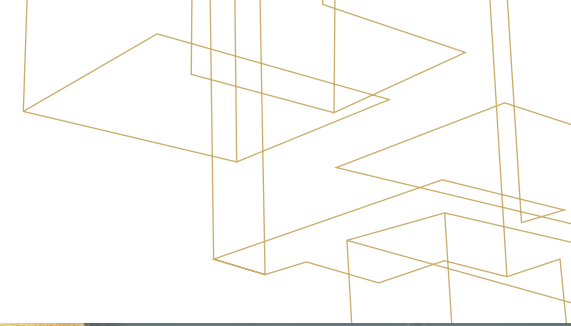
This information supplied herein is from sources we deem reliable. It is provided without any representation, warranty, or guarantee, expressed or implied as to its accuracy. Prospective Buyer or Tenant should conduct an independent investigation and verification of all matters deemed to be material, including, but not limited to, statements of income and expenses. Consult your attorney, accountant, or other professional advisor.



FOR SUBLEASE

±14,999 SF Office

5901 PRIESTLY DRIVE, SUITE 200 | CARLSBAD, CA 92008



[KIDDER.COM](https://www.kidder.com)

This information supplied herein is from sources we deem reliable. It is provided without any representation, warranty, or guarantee, expressed or implied as to its accuracy. Prospective Buyer or Tenant should conduct an independent investigation and verification of all matters deemed to be material, including, but not limited to, statements of income and expenses. Consult your attorney, accountant, or other professional advisor.

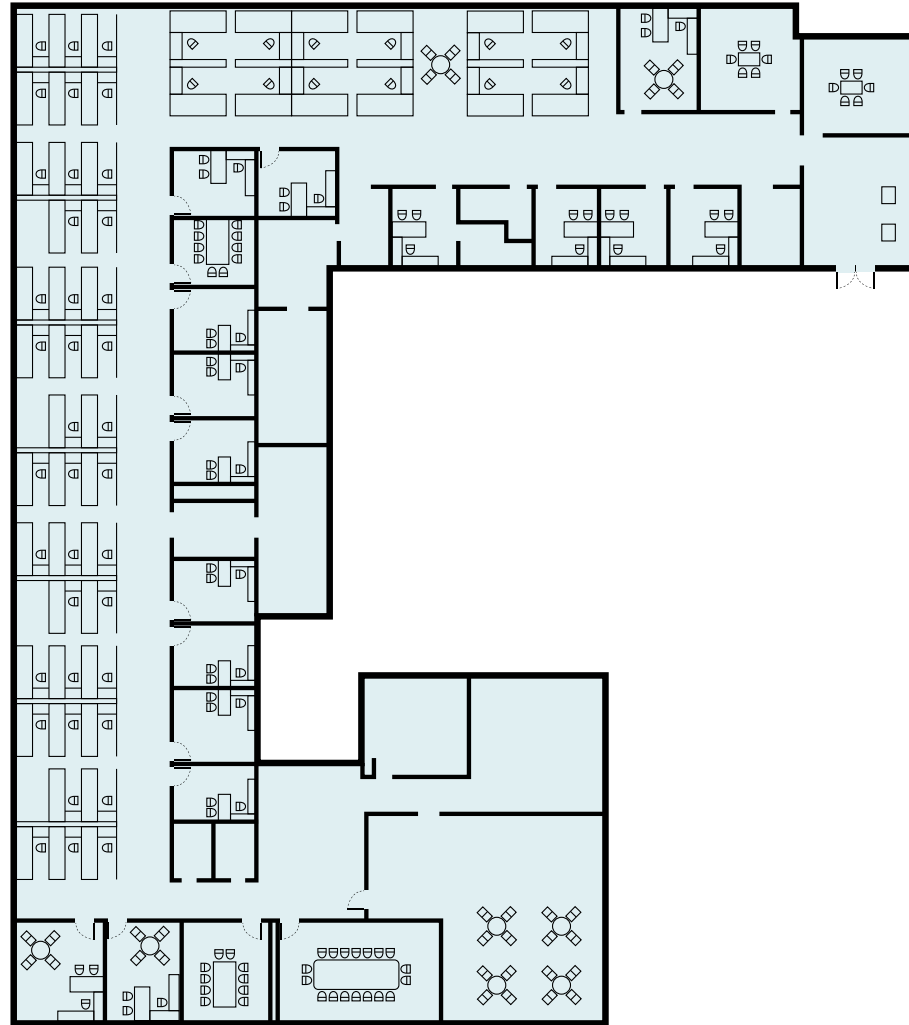
 **Kidder
Mathews**

FOR SUBLEASE

±14,999 SF Office

5901 PRIESTLY DRIVE, SUITE 200 | CARLSBAD, CA 92008

Suite 200



KIDDER.COM

This information supplied herein is from sources we deem reliable. It is provided without any representation, warranty, or guarantee, expressed or implied as to its accuracy. Prospective Buyer or Tenant should conduct an independent investigation and verification of all matters deemed to be material, including, but not limited to, statements of income and expenses. Consult your attorney, accountant, or other professional advisor.



FOR SUBLEASE

±14,999 SF Office

5901 PRIESTLY DRIVE, SUITE 200 | CARLSBAD, CA 92008



KIDDER.COM

This information supplied herein is from sources we deem reliable. It is provided without any representation, warranty, or guarantee, expressed or implied as to its accuracy. Prospective Buyer or Tenant should conduct an independent investigation and verification of all matters deemed to be material, including, but not limited to, statements of income and expenses. Consult your attorney, accountant, or other professional advisor.

km Kidder Mathews



+14,999 SF OFFICE FOR SUBLEASE

For subleasing information contact

TYLER HANSON

858.922.4686

tyler.hanson@kidder.com

LIC N° 01953551

KIDDER.COM

This information supplied herein is from sources we deem reliable. It is provided without any representation, warranty, or guarantee, expressed or implied as to its accuracy. Prospective Buyer or Tenant should conduct an independent investigation and verification of all matters deemed to be material, including, but not limited to, statements of income and expenses. Consult your attorney, accountant, or other professional advisor.

