

Lake Jeanette Office Park Condo

3818 North Elm Street, Suite E (Unit 504) | Greensboro, NC 27455



- ❖ Available For Sale
- ❖ 3,843 SF *(Per Guilford County Records)*
- ❖ Plenty of Offices with Windows
- ❖ Large Conference Room
- ❖ Break Room with Sink
- ❖ Office Furniture Available
- ❖ Call For More Details

A professional office condo conveniently located in the Lake Jeanette Office Park right off the I-840 North Elm exit.

The Office Park is comprised of professional and medical office companies including financial, insurance, and dental companies, etc.

It is located minutes from The Village at Elm mixed use retail development which includes retailers such as Harris Teeter, Epic Chophouse, and Chase Bank.



JJ Joubran, CCIM
(336) 270-9775
JJ@JoubranCommercial.com

Lake Jeanette Office Park Condo

3818 North Elm Street, Suite E (Unit 504) | Greensboro, NC 27455



JJ Joubran, CCIM

(336) 270-9775

JJ@JoubranCommercial.com

Lake Jeanette Office Park Condo

3818 North Elm Street, Suite E (Unit 504) | Greensboro, NC 27455



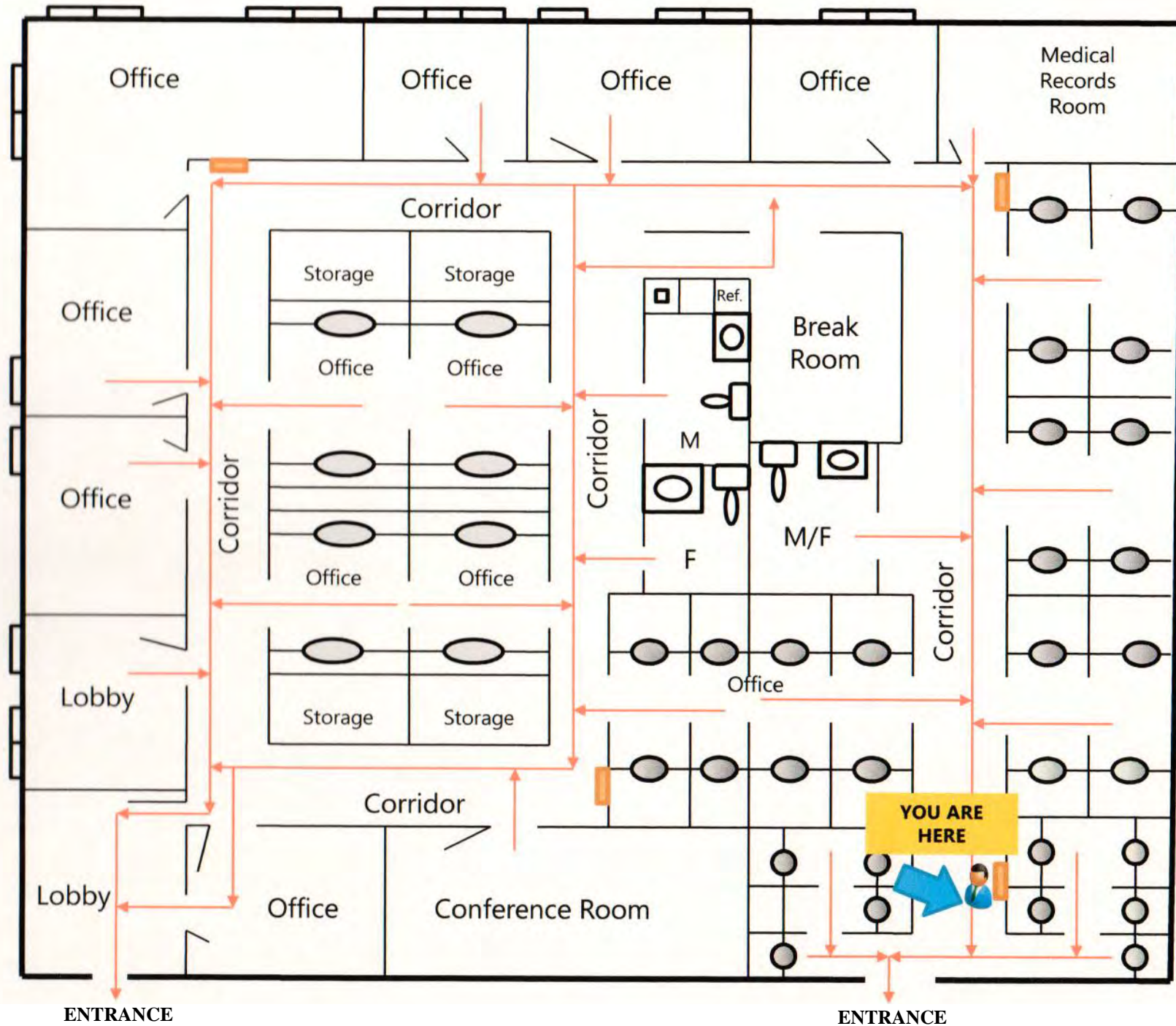
JJ Joubran, CCIM

(336) 270-9775

JJ@JoubranCommercial.com



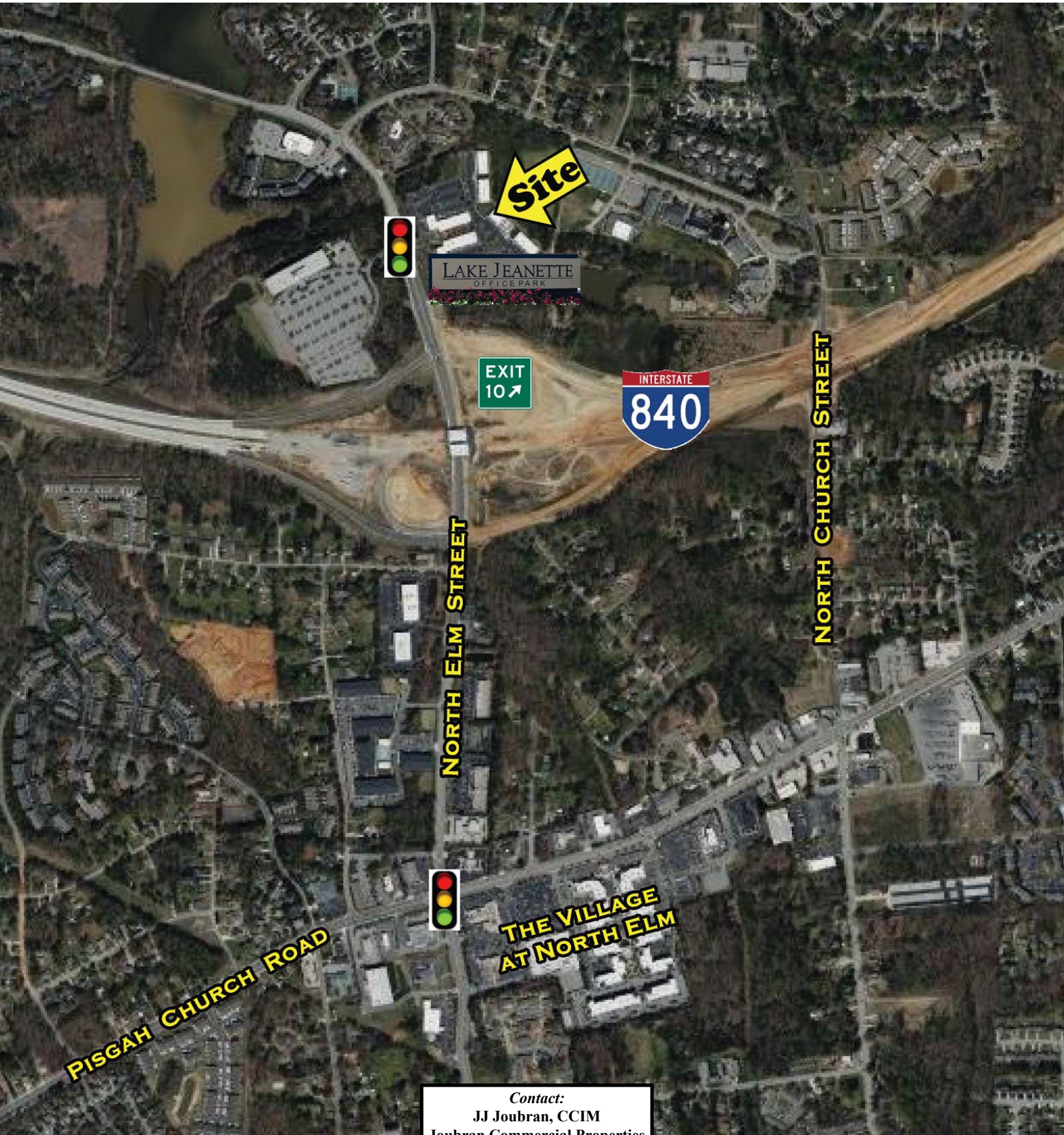
Floor Plan - 3818 North Elm Street, Suite E



Contact:
JJ Joubran, CCIM
Joubran Commercial Properties
(336) 270-9775

JJ@JoubranCommercial.com
www.JoubranCommercial.com

3818 N. Elm Street Aerial Overview



Contact:
JJ Joubran, CCIM
Joubran Commercial Properties
(336) 270-9775
JJ@JoubranCommercial.com
www.JoubranCommercial.com