

FOR LEASE

Bearden Road - Office Suites
230 Bearden Rd, Pelham, AL 35124



RED ROCK



5 Executive Office Suites

Lease Rate: \$1250.00 - 500.00/Mo - Full Service

TRISH RUSHING, CCIM

VP Commercial Brokerage

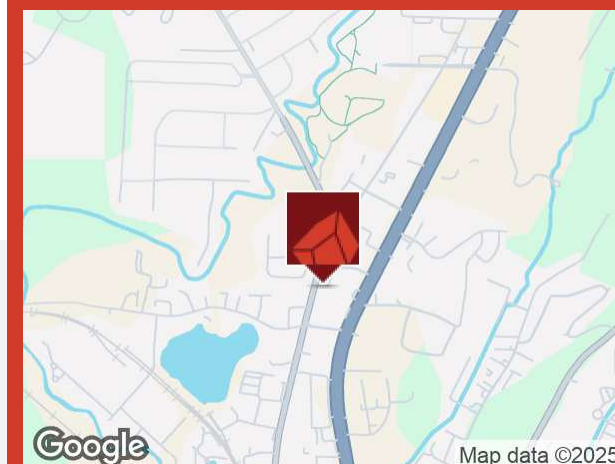
813.309.2875

trushing@redrockrg.com

1425 Richard Arrington Jr. Blvd. S Suite 100
Birmingham, AL 35205

205.324.3383

redrockrg.com





PROPERTY OVERVIEW

Newly renovated executive offices available for Lease in Pelham, AL. Professional shared office building. Shared Reception with waiting area, conference room, bathrooms and kitchen area. Cotenants include various professional services. Rent is Full Service and includes security and internet. 5 Offices Available.

OFFERING SUMMARY

Lease Rate:	\$500.00 - 6,000.00 per month (Full Service)
Building Size:	4,000 SF
Available SF:	144 - 2,000 SF
Renovated:	2022
Zoning:	B-2
Market:	Pelham

PROPERTY HIGHLIGHTS

- 5 Immediately Available Offices
- Easy Access to Hwy and Interstate
- Safe and Quiet Location
- Office Small: \$500.00/mo
- Office Large: \$900.00/mo
- Office DBL: \$1250.00/mo
- Discount if all 5 leased together.

Presented By:

TRISH RUSHING, CCIM
 VP Commercial Brokerage
 813.309.2875
 trushing@redrockrg.com

No warranty or representation, express or implied, is made to the accuracy or completeness of the information contained herein, and same is submitted subject to errors, omissions, change of price, rental or other conditions, withdrawal without notice, and to any special listing conditions imposed by the property owner(s). As applicable, we make no representation as to the condition of the property (or properties) in question.



Presented By:

TRISH RUSHING, CCIM

VP Commercial Brokerage

813.309.2875

trushing@redrockrg.com

No warranty or representation, express or implied, is made to the accuracy or completeness of the information contained herein, and same is submitted subject to errors, omissions, change of price, rental or other conditions, withdrawal without notice, and to any special listing conditions imposed by the property owner(s). As applicable, we make no representation as to the condition of the property (or properties) in question.



Large Office



Printer Nook or Seating Area Outside Office #1 & 2



Large Office



Office

Presented By:

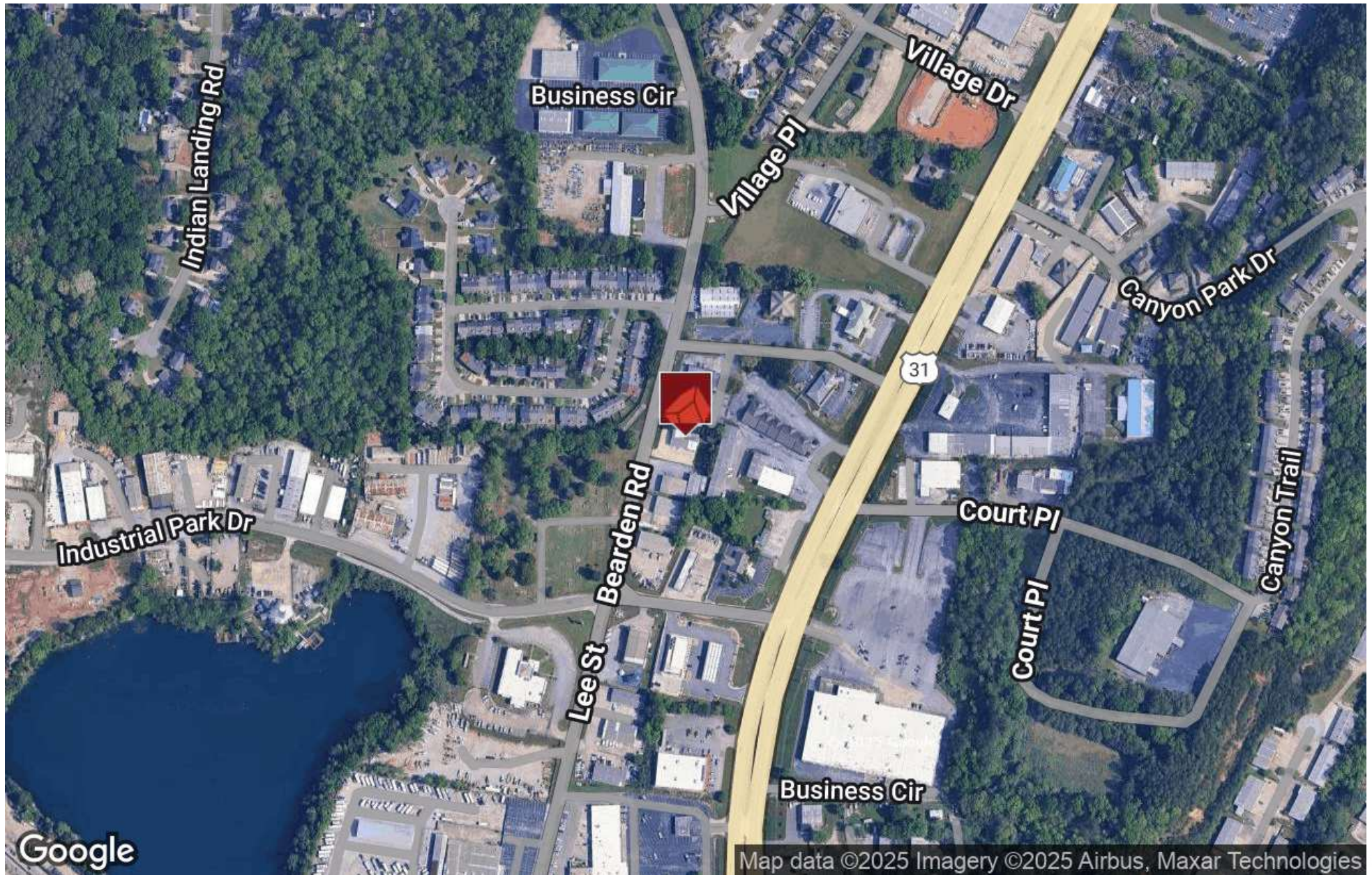
TRISH RUSHING, CCIM

VP Commercial Brokerage

813.309.2875

trushing@redrockrg.com

No warranty or representation, express or implied, is made to the accuracy or completeness of the information contained herein, and same is submitted subject to errors, omissions, change of price, rental or other conditions, withdrawal without notice, and to any special listing conditions imposed by the property owner(s). As applicable, we make no representation as to the condition of the property (or properties) in question.



Presented By:

TRISH RUSHING, CCIM

VP Commercial Brokerage

813.309.2875

trushing@redrockrg.com

No warranty or representation, express or implied, is made to the accuracy or completeness of the information contained herein, and same is submitted subject to errors, omissions, change of price, rental or other conditions, withdrawal without notice, and to any special listing conditions imposed by the property owner(s). As applicable, we make no representation as to the condition of the property (or properties) in question.

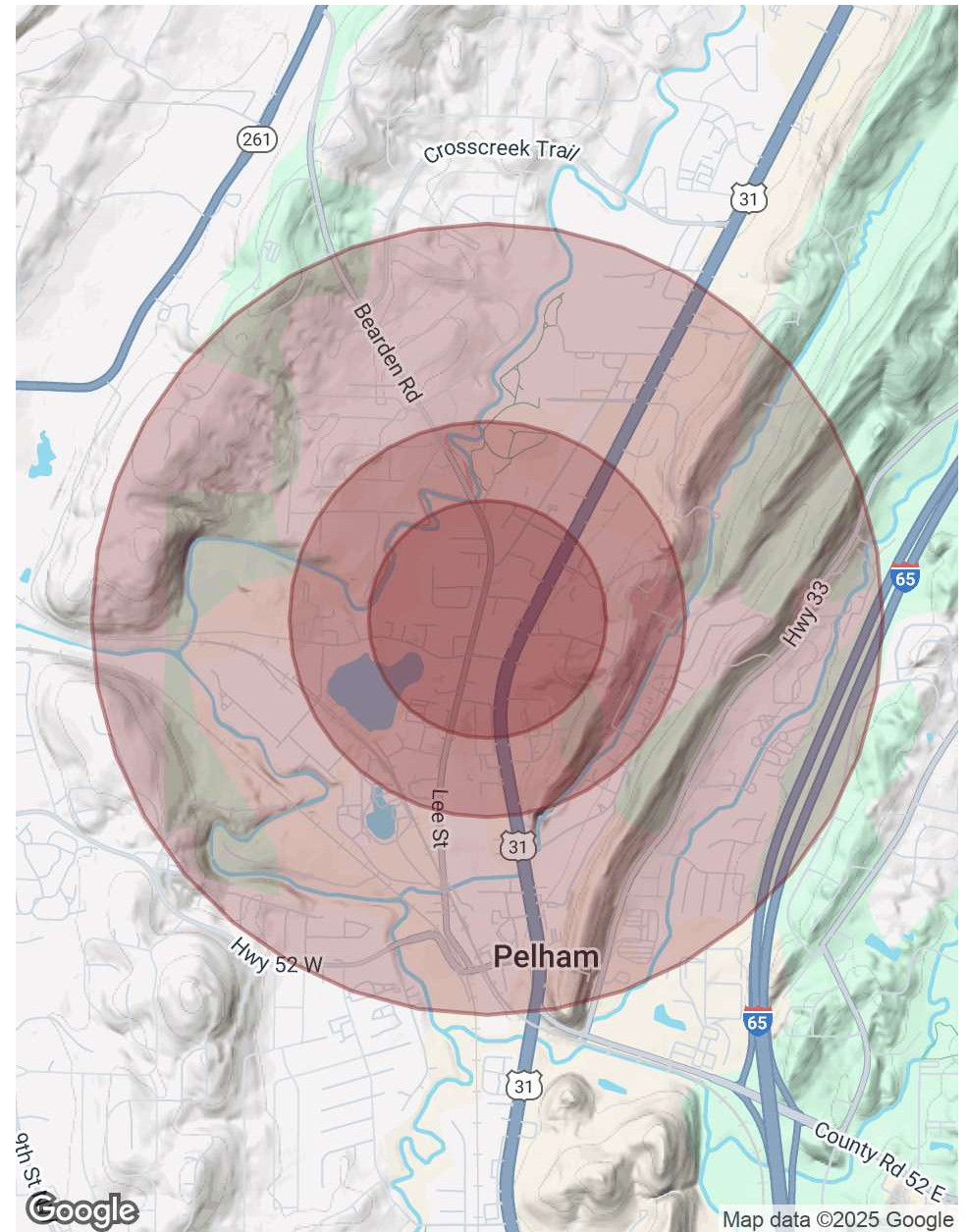
POPULATION

	0.3 MILES	0.5 MILES	1 MILE
Total Population	4	15	72
Average Age	52	51	49
Average Age (Male)	48	48	47
Average Age (Female)	55	54	52

HOUSEHOLDS & INCOME

	0.3 MILES	0.5 MILES	1 MILE
Total Households	2	7	32
# of Persons per HH	2	2.1	2.3
Average HH Income	\$67,052	\$64,140	\$58,010
Average House Value	\$194,411	\$181,903	\$156,166

Demographics data derived from AlphaMap



Presented By:

TRISH RUSHING, CCIM

VP Commercial Brokerage

813.309.2875

trushing@redrockrg.com

No warranty or representation, express or implied, is made to the accuracy or completeness of the information contained herein, and same is submitted subject to errors, omissions, change of price, rental or other conditions, withdrawal without notice, and to any special listing conditions imposed by the property owner(s). As applicable, we make no representation as to the condition of the property (or properties) in question.