



FOR LEASE

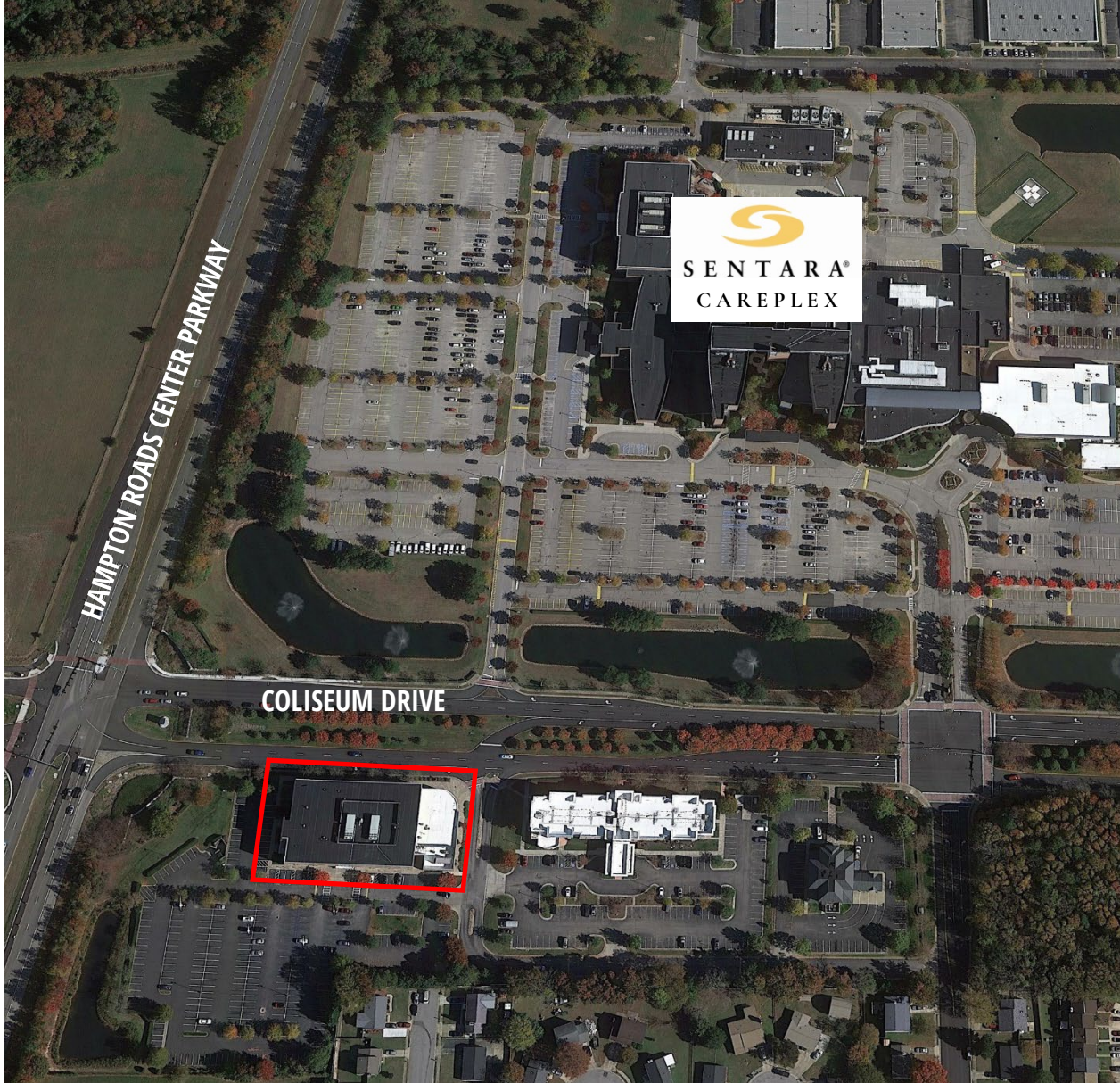
MEDICAL OFFICE SUITES AT SENTARA CAREPLEX WEST

4001 COLISEUM DRIVE | HAMPTON, VA 23666 | SENTARALEASING.COM

**FOR MORE INFORMATION,
PLEASE CONTACT:**

John M. Profilet, SIOR

757.640.2278 (direct) | 757.679.3278 (mobile) | jprofilet@slnusbaum.com



PROPERTY HIGHLIGHTS

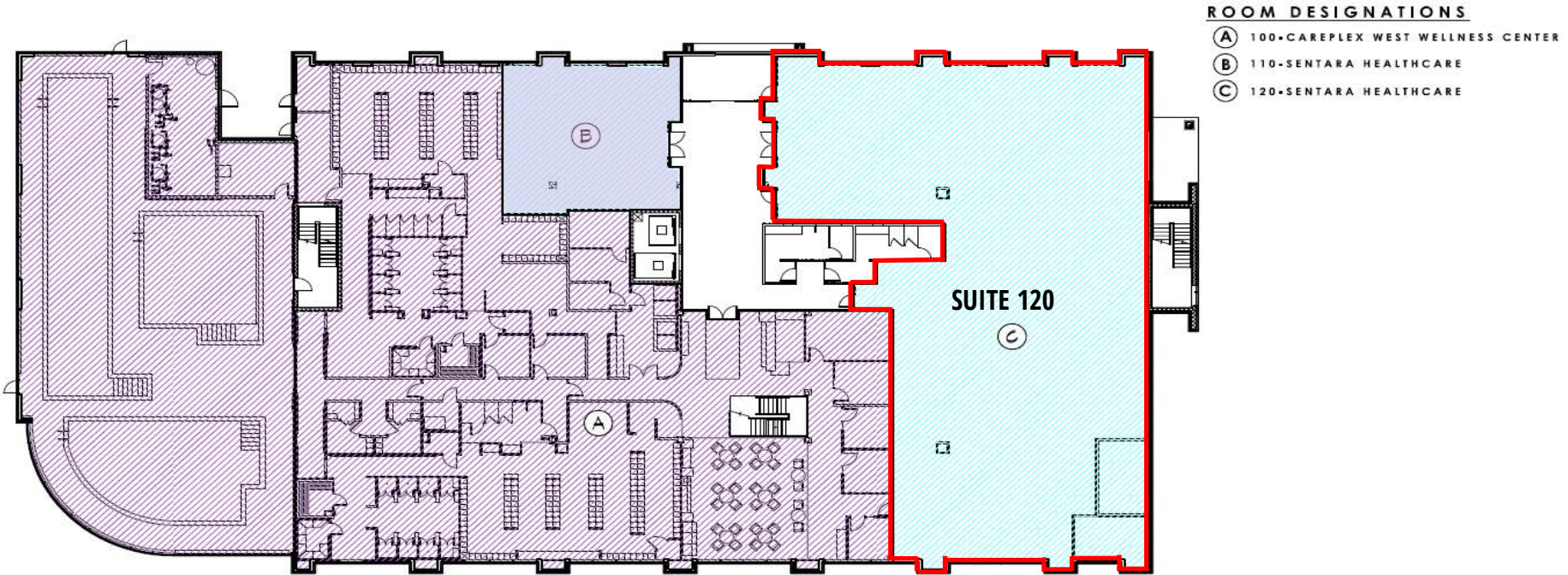
\$22.50/LSF, Full Service

- 8,038 LSF of medical office space available
- CarePlex West is a Class A, three-story, 70,774 square foot medical office building
- Conveniently located directly across the street from Sentara CarePlex Hospital and less than two miles from I-64
- Join Sentara Therapy Center, Sentara Family & Internal Medicine Physicians, Sentara Endocrinology Specialists, Sentara Rheumatology Specialists, and YMCA Health & Wellness Center (full service YMCA with an indoor pool) at CarePlex West
- Built in 2007
- Generous Landlord contribution to tenant's construction costs
- Full service lease includes janitorial service, excluding infectious/regulated medical waste

FOR LEASE

**FOR MORE INFORMATION,
PLEASE CONTACT:**

John M. Profilet, SIOR
757.640.2278 (direct) | 757.679.3278 (mobile) | jprofilet@slnusbaum.com



FIRST FLOOR

AVAILABLE SUITES:

Suite 120

8,038 LSF

**FOR MORE INFORMATION,
PLEASE CONTACT:**

John M. Profilet, SIOR

757.640.2278 (direct) | 757.679.3278 (mobile) | jprofilet@slnusbaum.com



FOR LEASE

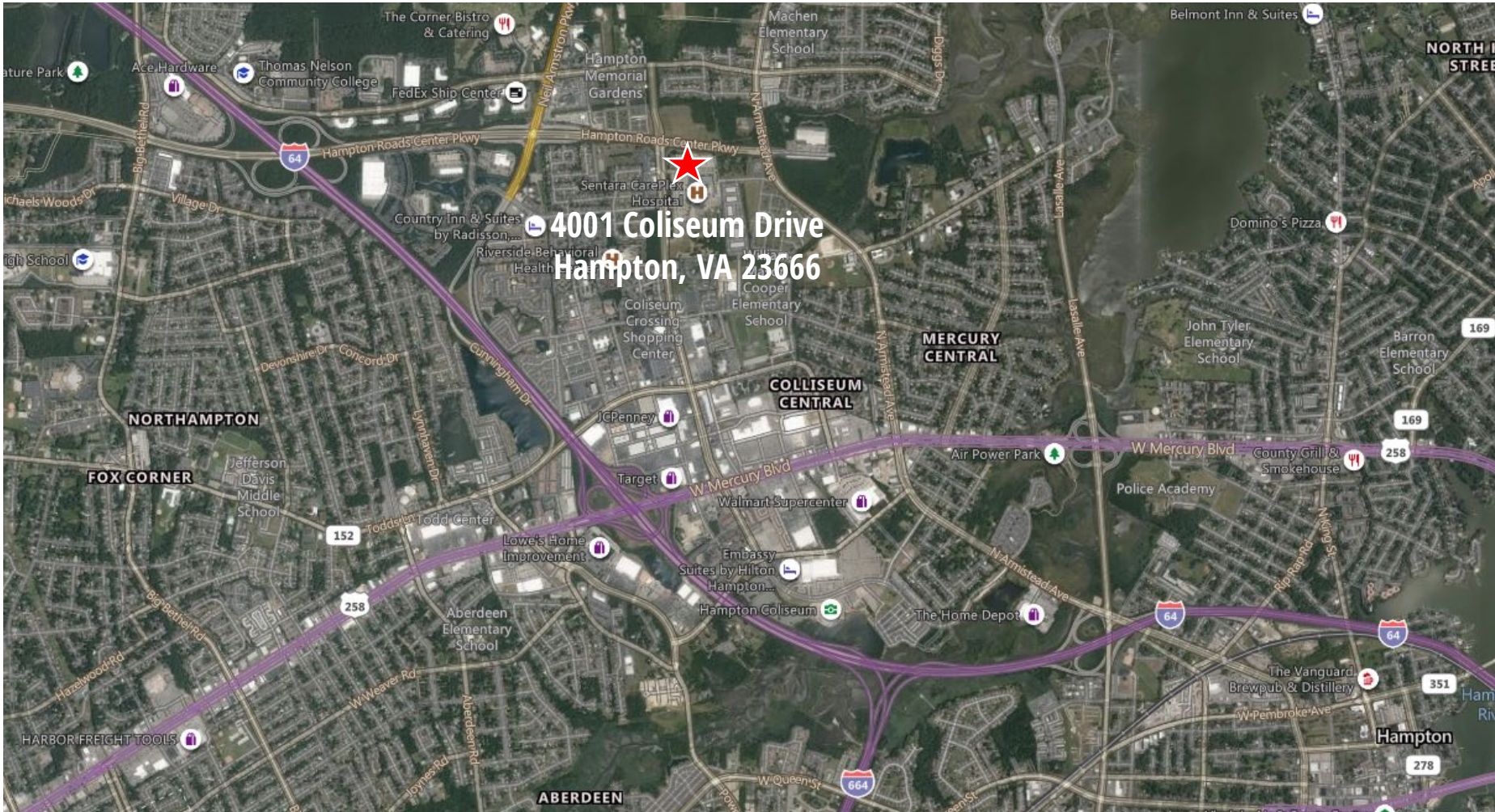
**FOR MORE INFORMATION,
PLEASE CONTACT:**

John M. Profilet, SIOR
757.640.2278 (direct) | 757.679.3278 (mobile) | jprofilet@slnusbaum.com



**FOR MORE INFORMATION,
PLEASE CONTACT:**

John M. Profilet, SIOR
757.640.2278 (direct) | 757.679.3278 (mobile) | jprofilet@slnusbaum.com



DISCLAIMER:

No warranty or representation, expressed or implied, is made to the accuracy or completeness of the information contained herein, and same is submitted subject to errors, omissions, change of price, rental or other conditions, withdrawal without notice, and to any special listing conditions imposed by the property owner(s). As applicable, we make no representation as to the condition of the property (or properties) in question.

**FOR MORE INFORMATION,
PLEASE CONTACT:**

John M. Profilet, SIOR
757.640.2278 (direct) | 757.679.3278 (mobile) | jprofilet@slnusbaum.com