

FOR SALE - \$950,000.00

1 N CHEROKEE LANE & 543 E. PINE STREET

LODI, CALIFORNIA

TWO PARCELS CONSISTING OF: ±5,350 SF SITUATED ON ±0.60 AC | SIGNALIZED CORNER

PROPERTY SUMMARY:

SALE PRICE: \$950,000.00

- Two Parcels
- **Zoned:** MCE - Mixed Use Center
- Paved Lot and Parking
- Signalized Corner

1 N CHEROKEE LANE

APN: 143-170-12

±0.32 AC Paved Lot

545 E. PINE STREET

APN: 043-170-11

±0.28 AC Lot

Four Buildings:

±2,300 SF – 100% Leased with M2M Tenant

±1,300 SF – 100% Leased with M2M Tenant

±1,000 SF – 100% Leased with M2M Tenant

±750 SF – Corner Office - VACANT

All information found in this marketing package have been gathered from resources believed to be reliable. Brokers and Agents do not warrant, guarantee or represent the accuracy of the information and recommend that all information be verified prior to a transaction.



FOR MORE INFORMATION
CONTACT:

PARTNERS
COMMERCIAL

Lorie Liddicoat

209.915.9913

Lic. 01952818

lorie@partnerscommercialre.com

Suzanne Grande

209.644.7220

Lic. 01080467

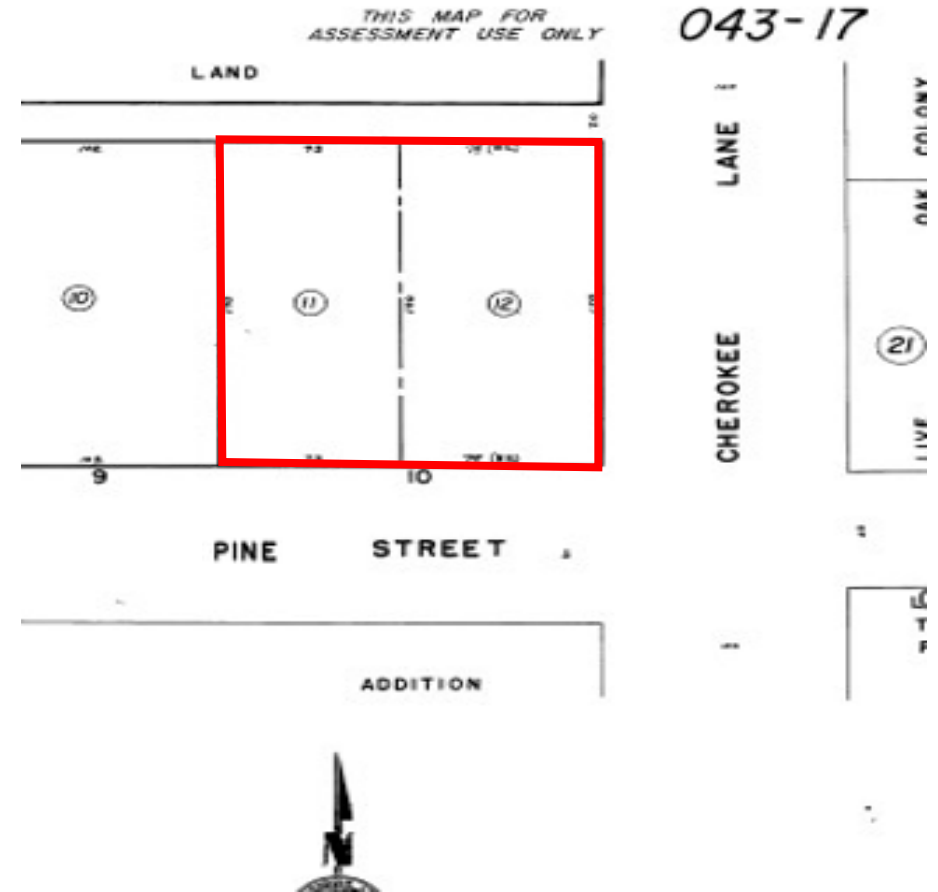
Suzanne@partnersreinc.com

FOR SALE - \$950,000.00

1 N CHEROKEE LANE & 543 E. PINE STREET

LODI, CALIFORNIA

TWO PARCELS CONSISTING OF: ±5,350 SF SITUATED ON ±0.60 AC | SIGNALIZED CORNER



FOR MORE INFORMATION
CONTACT:

PARTNERS
COMMERCIAL

Lorie Liddicoat
209.915.9913
Lic. 01952818

lorie@partnerscommercialre.com

Suzanne Grande
209.644.7220
Lic. 01080467

Suzanne@partnersreinc.com

FOR SALE - \$950,000.00

1 N CHEROKEE LANE & 543 E. PINE STREET

LODI, CALIFORNIA

TWO PARCELS CONSISTING OF: ±5,350 SF SITUATED ON ±0.60 AC | SIGNALIZED CORNER



FOR MORE INFORMATION
CONTACT:

PARTNERS
COMMERCIAL

Lorie Liddicoat
209.915.9913
Lic. 01952818
lorie@partnerscommercialre.com

Suzanne Grande
209.644.7220
Lic. 01080467
Suzanne@partnersreinc.com