

3045 WHITMAN DRIVE Evergreen, Colorado 80439



PROPERTY FEATURES

- Newer building/modern architecture
- Great north Evergreen location
- Beautiful setting on a hillside with trees
- Shared kitchen area
- On-site property management

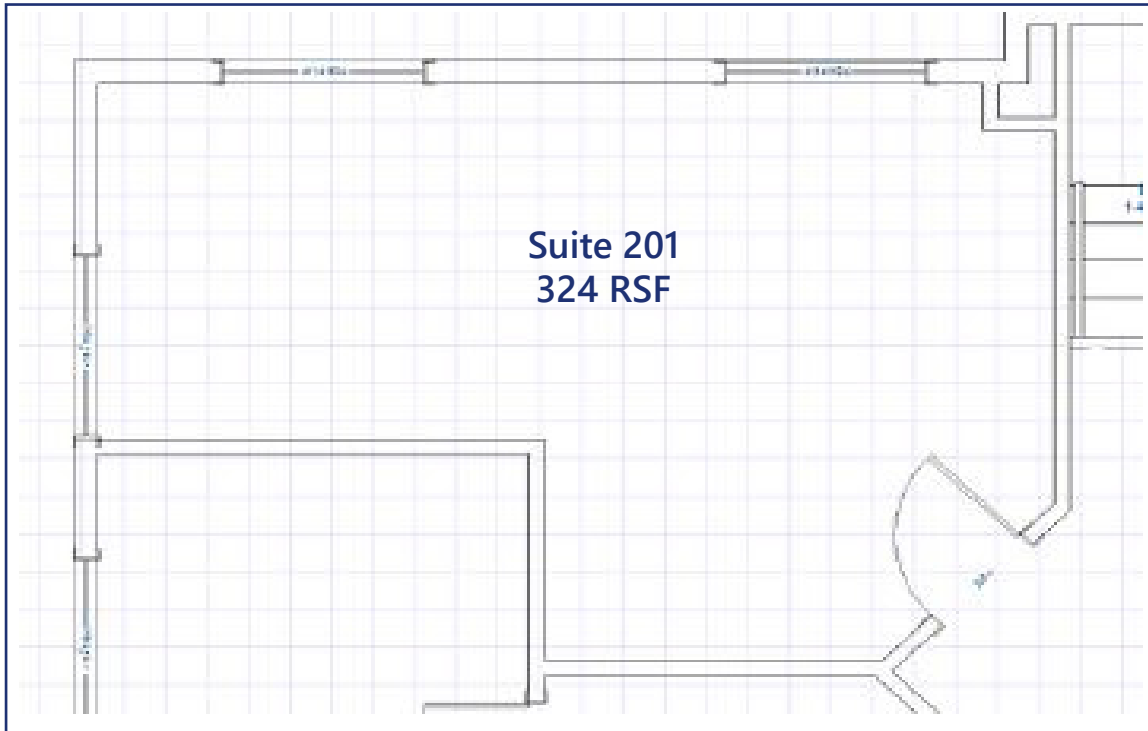
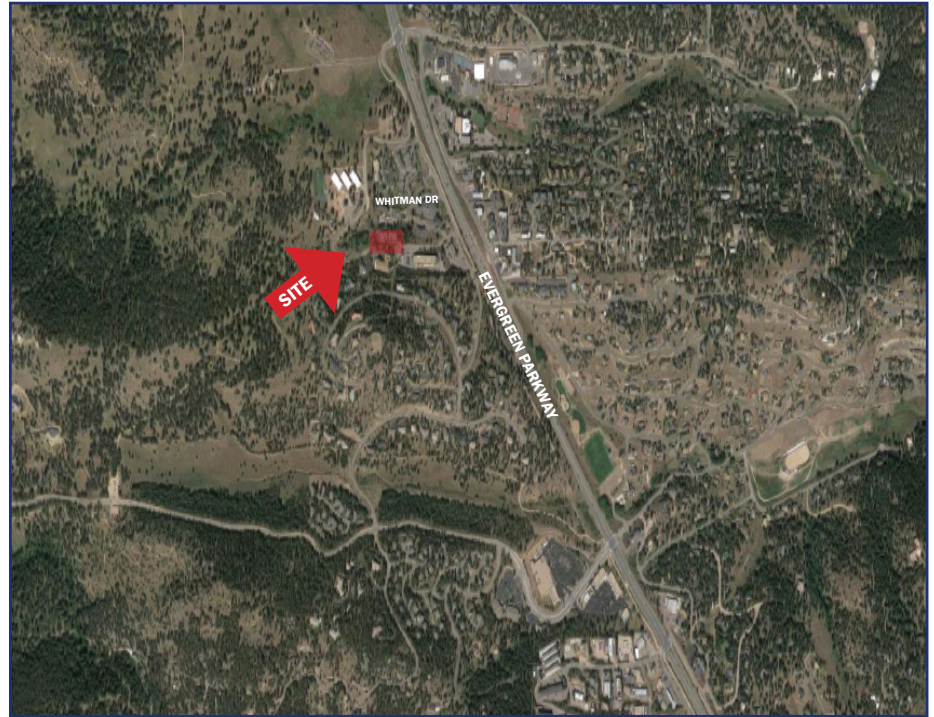
BUILDING SPECIFICATIONS

Available:	Suite 201	324 RSF
Lease Rate:		\$18.50/SF FSG
Parking Ratio:		3.90/1,000 RSF
Building Size:		6,650 SF
Year Built:		2007

FOR MORE INFORMATION CONTACT:

RENÉE SPICER
rspicer@gcgcre.com | 720.476.5226

JAMIE MACBETH
jmacbeth@gcgcre.com | 720.476.5229



FOR MORE INFORMATION CONTACT:

RENÉE SPICER

rspicer@gcgcre.com | 720.476.5226

JAMIE MACBETH

jmacbeth@gcgcre.com | 720.476.5229