



Warehouse Building For Lease

26401 Fargo Avenue, Bedford Heights, OH

26401 Fargo Avenue

Bedford Heights, OH

Property Specifications

- 84,720 SF warehouse building
- Approximately 6,000 SF office space
- 11 docks, 1 drive in door
- 23' ceilings
- Wet sprinklers
- 40 parking spaces
- New improvements include: new LED lighting, new unit heaters, parking lot improvements, dock bumpers, and other cosmetic improvements
- Excellent access to I-480, I-271 and SR 422
- **\$5.95/ SF NNN**
- **\$1.55/ SF Operating Expenses**



2024 Demographics

Total population

3-miles	5-miles	10-miles
46,257	143,564	577,954

Daytime population

3-miles	5-miles	10-miles
74,691	187,163	698,187

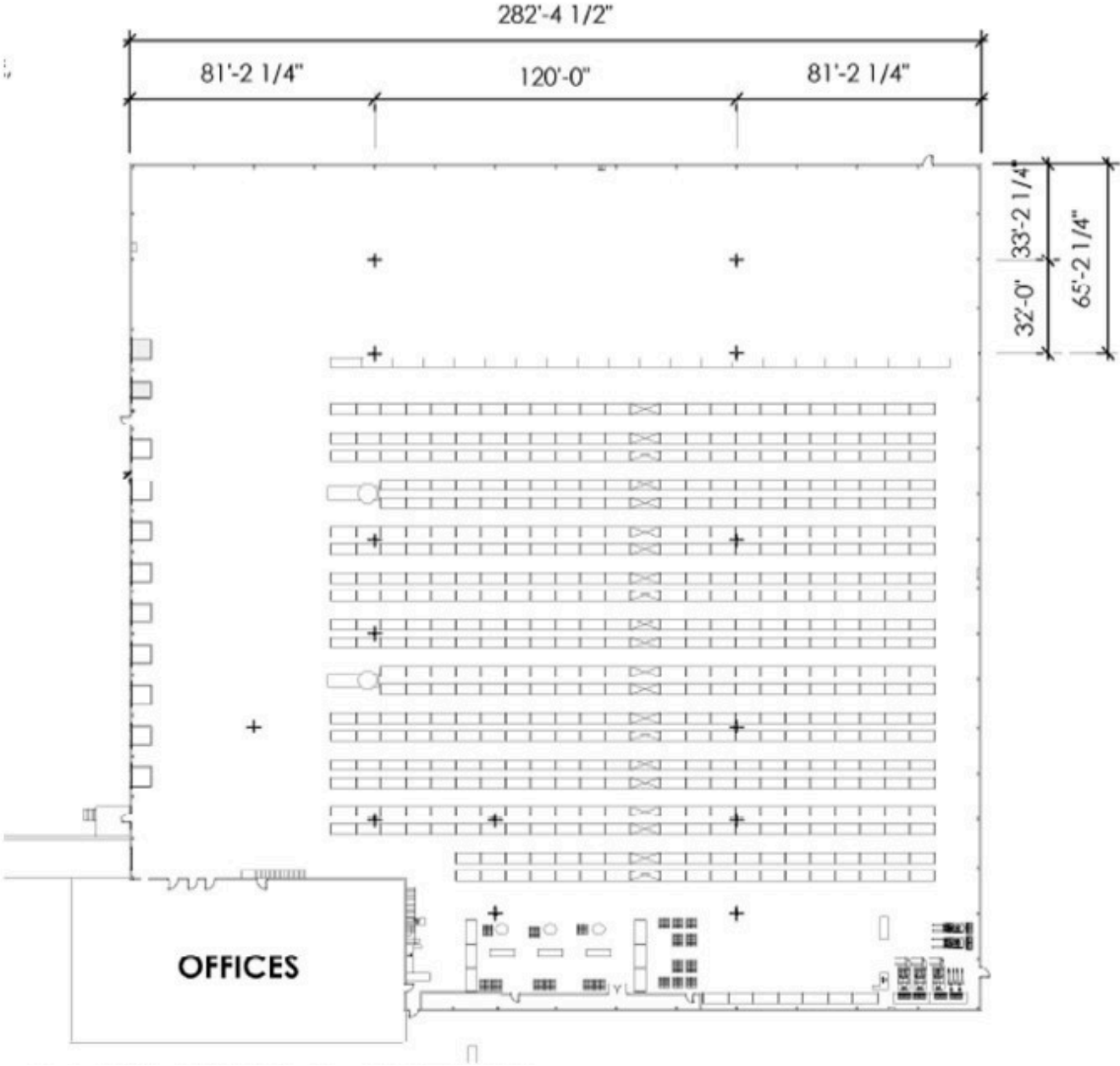
Daytime workers

3-miles	5-miles	10-miles
50,632	113,849	397,152

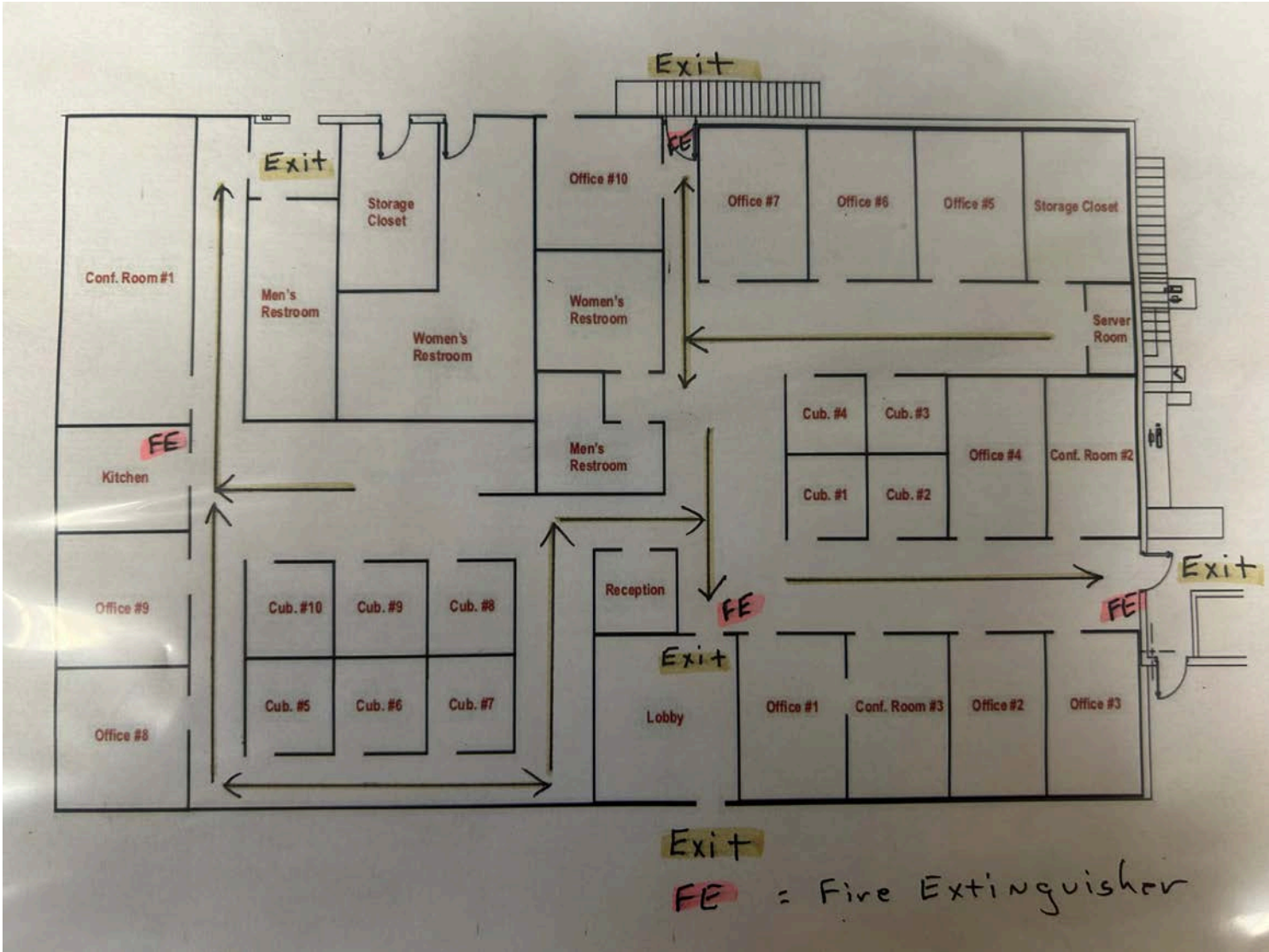
Average household income

3-miles	5-miles	10-miles
\$96,158	\$113,334	\$102,380

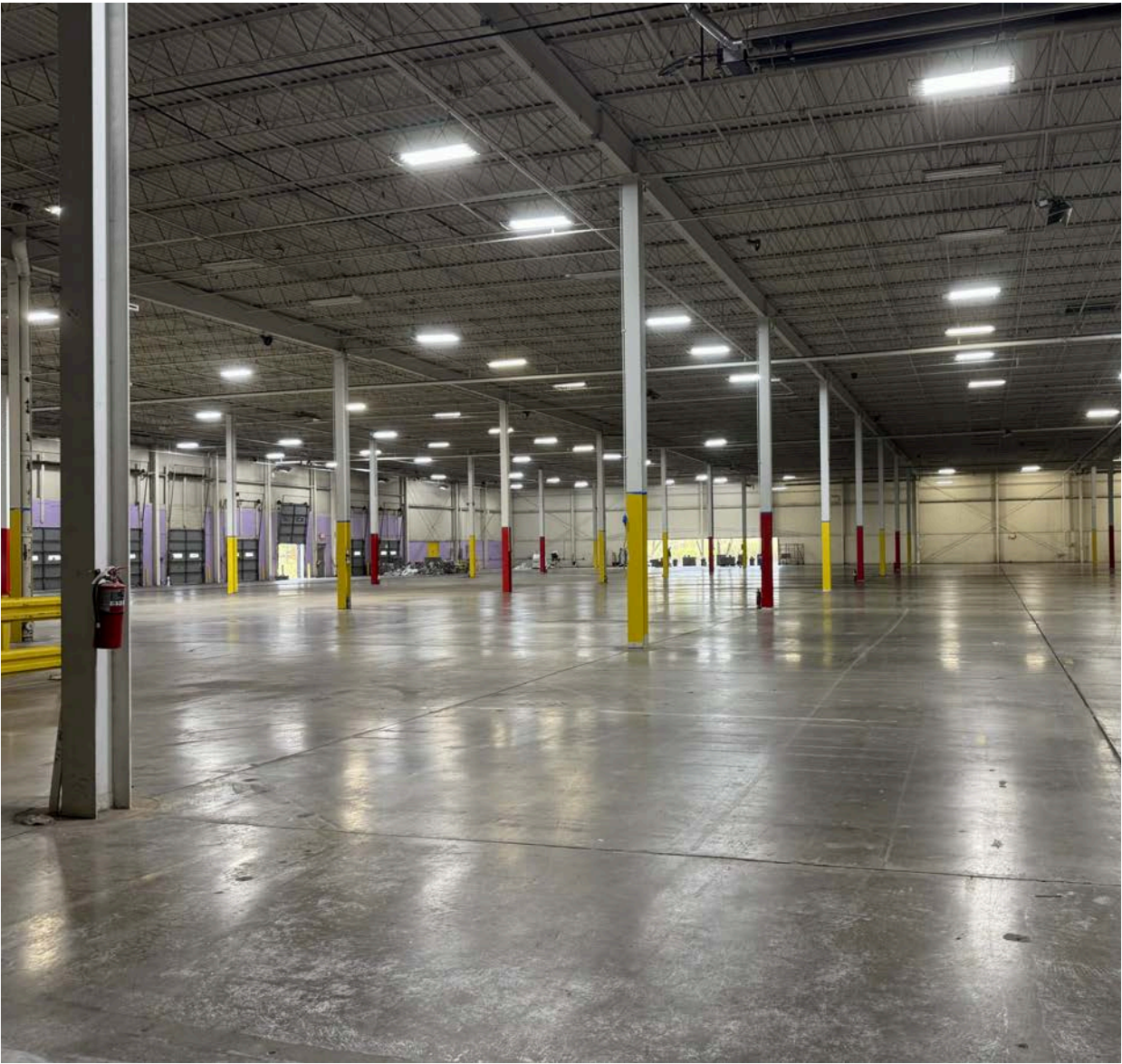
Warehouse floor plan

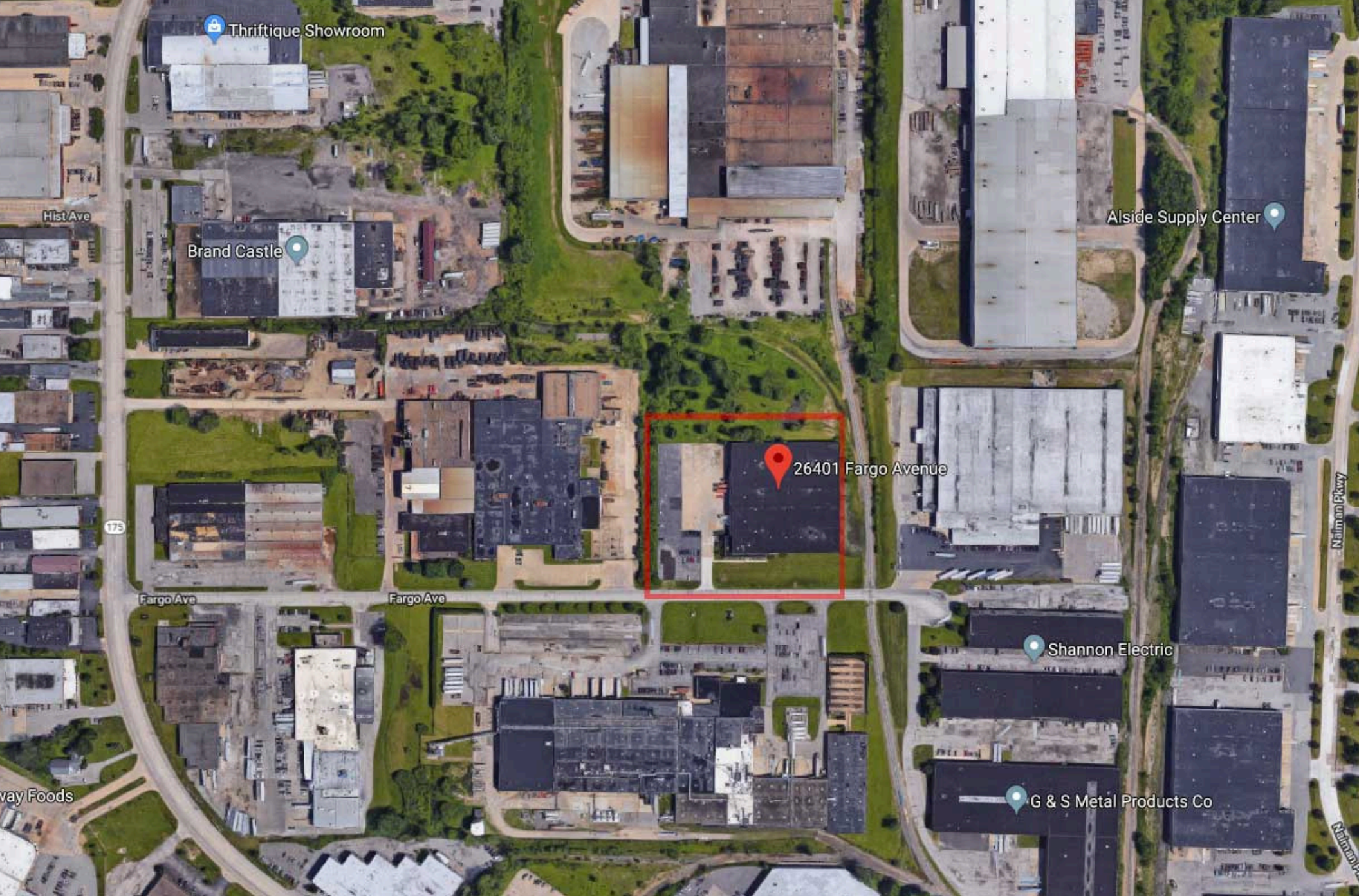


Office floor plan

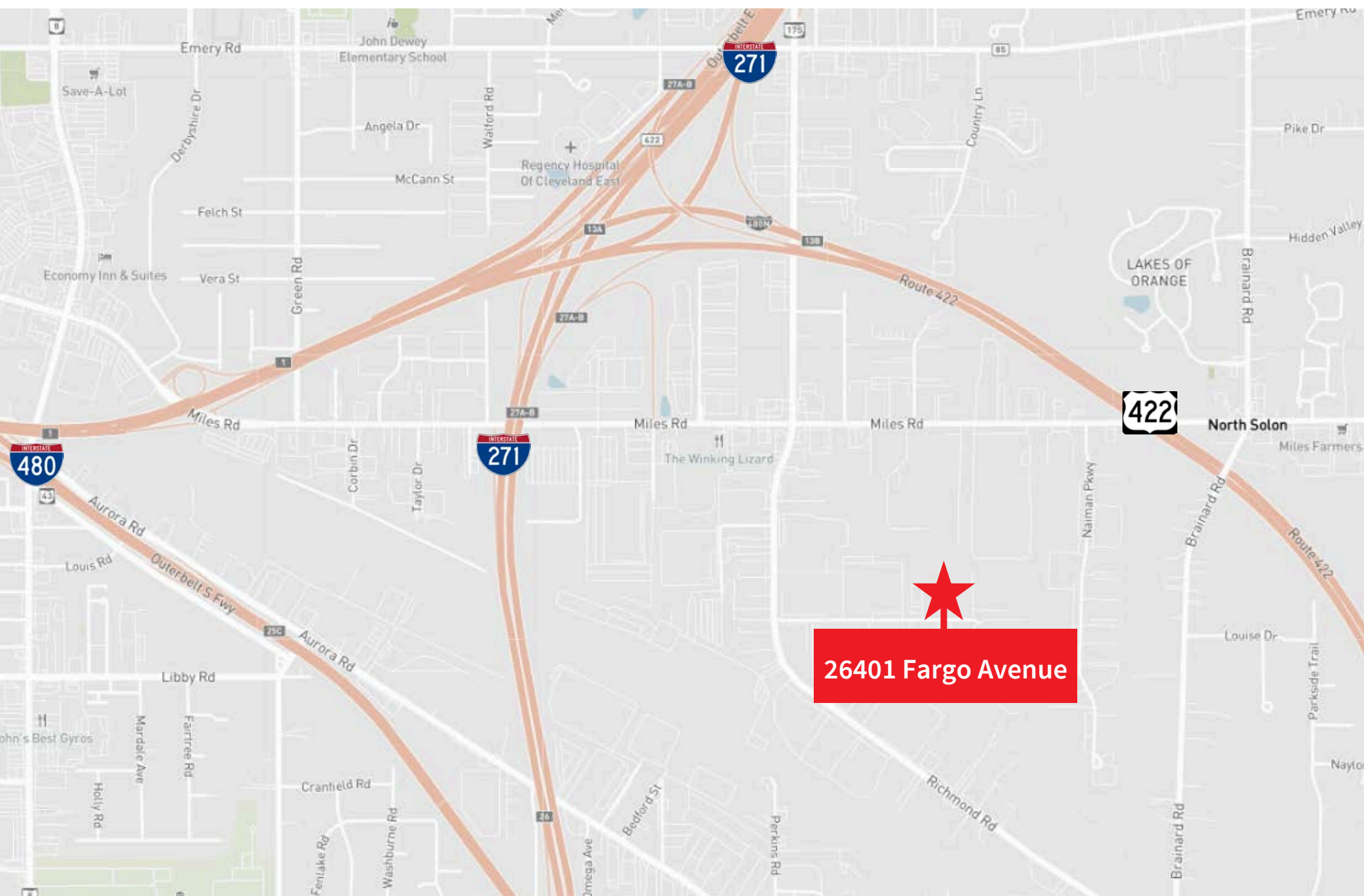


Building photos





Location map



JLL

Kristy (Hull) Peters, SIOR
Senior Vice President

kristy.hull@jll.com

+1 (216) 937 4375

Sam Everson
Associate

samuel.everson@jll.com

+1 (216) 912 4509

Jones Lang LaSalle Americas, Inc.